

## Interhemispheric Approach to Anterior Communicating Artery Aneurysm: A Case Illustration

### Abstract

There are two main types of approaches for anterior communicating artery (AcomA) aneurysms, namely pterional approach, and an interhemispheric (IH) approach. Pterional approach is the most common for anterior circulation aneurysms. However, this approach cannot be used without resection of gyrus rectus when aneurysm is located high within the IH fissure and directed posterosuperiorly, which is better handled with IH approach. In this article, we will describe the tricks of IH approach with a case illustration.

**Keywords:** Anterior communicating artery aneurysm, distal anterior cerebral artery aneurysm, interhemispheric approach

### Introduction

The pterional approach is the most common for anterior circulation aneurysms. It has certain advantages such as bilateral parent artery of the proximal side can be secured in the early stage of the process and damage to the olfactory nerve is minimal. However, this approach cannot be used without resection of gyrus rectus when aneurysm is located high within the interhemispheric (IH) fissure and directed posterosuperiorly, which is better handled with IH route. Majority of distal anterior cerebral artery aneurysms are located along the corpus callosum especially the rostrum part, so the anterior IH approach represents the most common way to reach them.<sup>[1]</sup> For anterior communicating artery (AcomA) aneurysm, more proximal exposure in IH fissure under the rostrum of the corpus callosum is required for better visualization which is achieved with a craniotomy placed more frontally.<sup>[2-4]</sup> There are some variations for the IH approach including bifrontal, unifrontal, basal IH, and transcrisagalli interfalicine approaches. Each subtype will be discussed under the discussion section. In this article, we will describe the tricks of unifrontal IH approach with a case illustration.

### Case Report

A 42-year-old female with a history of previously clipped AcomA aneurysm 1 year

back, on routine follow-up, was found to have recurrence of aneurysm at previously clipped site. She was operated through pterional route for a posterosuperiorly directed AcomA aneurysm during fast surgery. Three-dimensional-rotational computed tomography angiography confirmed it to be located at previously clipped AcomA site directing posterosuperiorly [Figure 1a]. The computational fluid dynamic study was suggestive of impending rupture [Figure 1b]. An unifrontal IH approach was chosen for her. She was positioned supine with head slightly extended and fixed with a head frame. Bicoronal skin incision was given 1 cm behind hairline. Subperiosteal dissection of the skin flap was extended to the glabella and the orbital ridge. Supraorbital nerves were preserved. Four burr holes were made [Figure 1c]. A bifrontal craniotomy was done crossing the midline. Dura was dissected carefully not to injure sinus with blunt dissectors. Bleeding from sinus was controlled with Gelfoam and fibrin glue. The frontal sinus was opened up during craniotomy. The mucous membrane in the sinus was dissected and cauterized. The inner table of sinus and crista galli was removed with rongeur and drill [Figure 1d]. The right frontal dura opened with pedicle toward sinus. Arachnoid was dissected away with care to preserve bridging veins and continued along the margin of falx [Figure 2a]. The cerebrospinal fluid (CSF) release obtained with subarachnoid dissection allowed gradual brain relaxation and wider surgical exposure.

**Satya Bhusan Senapati<sup>1,2</sup>,  
Lavlesh Rathore<sup>2,3</sup>,  
Yasuhiro Yamada<sup>2</sup>,  
Yoko Kato<sup>2</sup>**

<sup>1</sup>Department of Neurosurgery, Sikkim Manipal Institute of Medical Sciences, Gangtok, Sikkim, <sup>3</sup>Department of Neurosurgery, Shri Balaji Institute of Medical Sciences, Raipur, Chhattisgarh, India, <sup>2</sup>Department of Neurosurgery, Fujita Health University, Banbuntane Hotokukai Hospital, Nagoya, Japan

**Address for correspondence:**  
Dr. Satya Bhusan Senapati,  
CRH, SMIMS, 5<sup>th</sup> Mile, Tadong,  
Gangtok, Sikkim, India.  
E-mail: satya.bhusan.senapati@gmail.com

Access this article online

Website: www.asianjns.org

DOI: 10.4103/ajns.AJNS\_43\_19

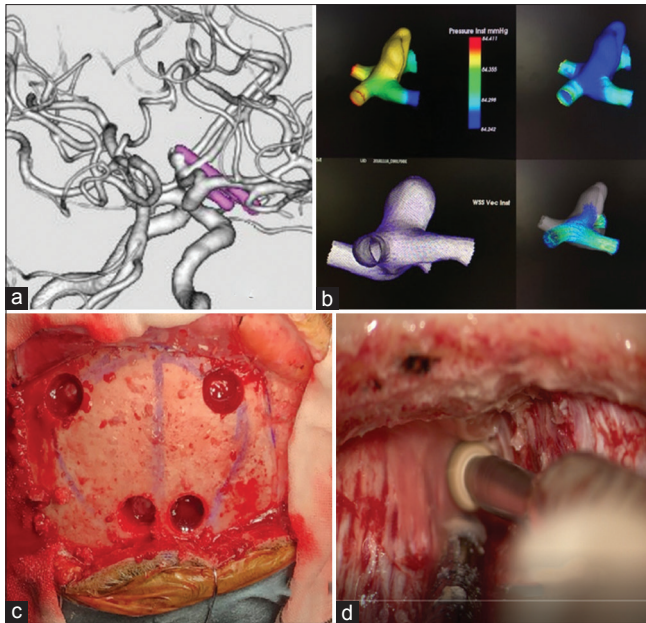
Quick Response Code:



**How to cite this article:** Senapati SB, Rathore L, Yamada Y, Kato Y. Interhemispheric approach to anterior communicating artery aneurysm: A case illustration. Asian J Neurosurg 2019;14:946-8.

This is an open access journal, and articles are distributed under the terms of the Creative Commons Attribution-NonCommercial-ShareAlike 4.0 License, which allows others to remix, tweak, and build upon the work non-commercially, as long as appropriate credit is given and the new creations are licensed under the identical terms.

For reprints contact: reprints@medknow.com

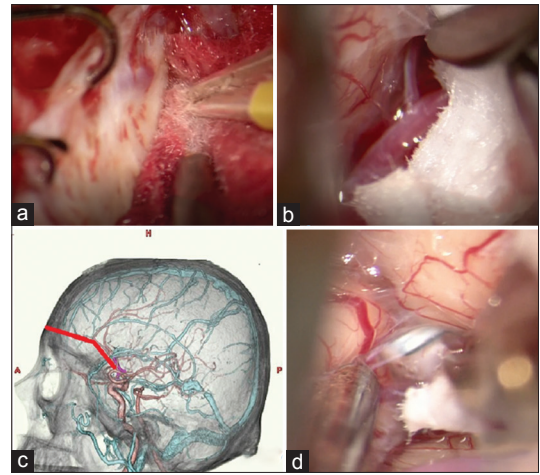


**Figure 1:** (a) Three-dimensional rotational angiography showing posterosuperiorly directed recurrent anterior communicating artery aneurysm. (b) Computational fluid dynamic showing high intraluminal pressure and low WSS suggestive of impending rupture. (c) Burr holes and craniotomy marking. (d) Drilling of crista galli

The initial step was to identify lower margin of falx and the upper surface of corpus callosum with the help of pericallosal artery. The corpus callosum must be differentiated from cingulate gyri by its glistening surface, pearly white color and parallel running transverse fibers. Once pericallosal artery was identified, then IH dissection was continued following pericallosal artery under the rostrum of the corpus callosum up to AComA complex [Figure 2b-d]. Figure 2c shows the trajectory of the operative view. The aneurysm was sharply dissected from surrounding adhesions, out of previous surgery [Figure 3a]. In this approach, we were able to dissect bilateral A1 and A2 with AcomA aneurysm clearly [Figure 3b]. Fenestrated clip applied to occlude the neck of aneurysm completely [Figure 3c]. Complete occlusion of aneurysm neck and flow in hypothalamic perforators was confirmed with post-clipping indocyanine green video angiography and endoscopy [Figures 3d and 4a-c]. The dura was tightly closed in a waterproof manner. Tack-up sutures were placed at the dura to the craniotomy edge, to minimize the risk of postoperative epidural hematoma. The bone flap was replaced and fixed using microplates. The postoperative period was uneventful without any neurological deficit. Till now, we have operated three cases of recurrent postsuperiorly directed AcomA aneurysm through this route with good neurological outcome.

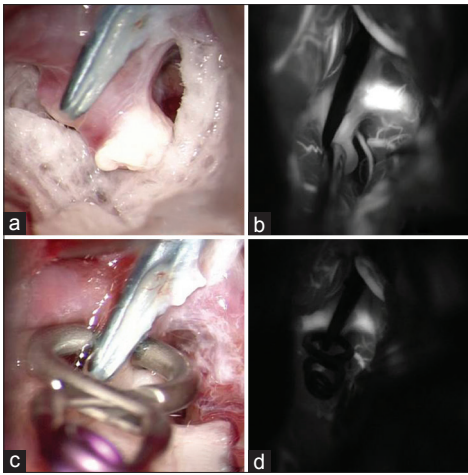
## Discussion

Unifrontal IH approach is the best approach for A2-A3 and unruptured small- and medium-size AcomA aneurysm. Posterosuperiorly, directed and recurrent aneurysms requiring wide exposure<sup>[5,6]</sup> may need bifrontal IH approach.



**Figure 2:** (a) Parafalcine dissection using near side tension force. (b) Subfalcine arachnoid incised to expose pericallosal artery. (c) Red line showing trajectory for operative view of IH approach. (d) Previously clipped aneurysm in interhemispheric fissure

However, in our case, we were able to clip this aneurysm from unifrontal IH approach. This was possible because of good CSF release. The limitation of this approach is that it provides less clear proximal control on A1 portion of ACA. The damage to bridging veins is another potential complication of IH approach. It can be minimized by selecting the wider space between two bridging veins as the entry point to the IH fissure. We use dual image video angiography to localize bridging veins before opening the dura. Brain contusion due to retraction is an issue, which can be avoided by applying gentle traction with appropriate subarachnoid dissection and CSF release. A modification of this approach is basal IH approach. In this approach, sinus is ligated and transected at its most anterior part in proximity to crista galli.<sup>[5]</sup> Both olfactory tracts are dissected and both A1 segments of ACA are identified early by subfrontal route.<sup>[5,6]</sup> The IH fissure is then dissected and A2 segment are followed from distal portion toward the AcomA complex. The subfrontal route provides early proximal control of bilateral A1, for which this approach is best for ruptured AcomA. The removal of SAH blood clots from IH fissure to prevent postoperative vasospasm is better in basal IH approach as compared to pterional approach. The limitations of this basal IH approach are open frontal sinus and olfactory tract sacrificing.<sup>[5]</sup> In large series, the authors have described 80% preservation of olfaction by dissecting olfactory tract from the orbital surface of frontal lobe bilaterally as far as the olfactory trigonal region.<sup>[5,6]</sup> By dissecting olfactory tract, traction will not be applied to it, even if the frontal lobe is elevated during surgery. Another modification of IH approach is transcristagalli interfalcine approach. In this approach, basal portion of the falx which is visible after the removal of the crista galli is split into two leaves with a back side of the knife. Venous bleeding from the superior sagittal sinus is controlled by packing with oxidized cellulose and fibrin glue. The advantage of this approach is that both olfactory nerves and bridging



**Figure 3:** (a) Clear delineation of aneurysm neck with previously applied clip *in situ*. (b) Indocyanine green showing bilateral A1-A2 and filling aneurysm. (c) Fenestrated clip applied to completely occlude aneurysm neck. (d) Postclipping indocyanine green confirmed no flow in aneurysm with patent hypothalamic perforators

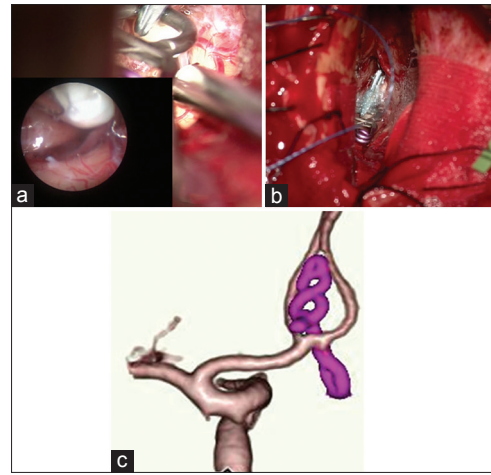
veins that lead into the sagittal sinus are protected by the split basal leaves of the falx. This approach provides easy access to the prechiasmatic cistern. If the space is too small for approaching the aneurysm, then one side of falx can be cut to enlarge the operative field as in a unilateral basal IH approach.<sup>[4]</sup>

### Conclusion

Unifrontal IH approach is a safe and efficient approach for AcomA aneurysm located deep within the IH fissure, directed posterosuperiorly. Under the surgical microscope with good CSF release, this corridor provides wide exposure and all the flexibility for surgical maneuver. Although early proximal control on A1, venous infarction due to damage of bridging veins is a limitation; on the other hand, it has an added advantage of minimal brain retraction and less risk on olfactory nerve damage. This approach should be the part of the armamentarium of vascular surgeons.

### Declaration of patient consent

The authors certify that they have obtained all appropriate patient consent forms. In the form the patient(s) has/have given his/her/their consent for his/her/their images and other clinical information to be reported in the journal. The patients understand that their names and initials will not be published and due efforts will be made to conceal their identity, but anonymity cannot be guaranteed.



**Figure 4:** (a) Postclipping endoscopy confirmed complete occlusion of neck with patent hypothalamic perforators. (b) Wide exposed corridor from surface to anterior communicating artery aneurysm clip application site through unifrontal interhemispheric approach. (c) Postoperative three-dimensional computed tomography angiography showing complete occlusion of aneurysm neck with second fenestrated clip applied perpendicular to neck

### Financial support and sponsorship

Nil.

### Conflicts of interest

There are no conflicts of interest.

### References

1. Lehecka M, Dashti R, Hernesniemi J, Niemelä M, Koivisto T, Ronkainen A, *et al.* Microneurosurgical management of aneurysms at the A2 segment of anterior cerebral artery (proximal pericallosal artery) and its frontobasal branches. *Surg Neurol* 2008;70:232-46.
2. Takaji Y. Fundamental techniques of interhemispheric approach. *Jpn J Neurosurg* 2015;24:745-50.
3. Feletti A, Mamadaliev D, Mewada T, Kei Y, Yamada Y, Kawase T, *et al.* Interhemispheric approach. *Neurovasc Surg eBook*, 2019;29-33.
4. Sano H, Kato Y, Hayakawa M, Akashi K, Kanno T. A transcrista galli, translamina terminalis approach for highly placed basilar bifurcation aneurysms. *Acta Neurochir (Wien)* 1997;139:1020-4.
5. Suzuki J, Mizoi K, Yoshimoto T. Bifrontal interhemispheric approach to aneurysms of the anterior communicating artery. *J Neurosurg* 1986;64:183-90.
6. Suzuki J, Yoshimoto T, Mizoi K. Preservation of the olfactory tract in bifrontal craniotomy for anterior communicating artery aneurysms, and the functional prognosis. *J Neurosurg* 1981;54:342-5.