

Encapsulating Peritoneal Sclerosis: A Rare Complication of Peritoneal Dialysis

A 50-year-old female with Alport syndrome and end-stage renal disease was started on peritoneal dialysis (PD) 6 years earlier. The patient presented with recurrent episodes of abdominal pain and distension. Serial computed tomography of the abdomen showed progressive thickening and calcifications of the peritoneum consistent with encapsulating peritoneal sclerosis [Figures 1 and 2]. The PD catheter was removed, and the patient was shifted to hemodialysis.

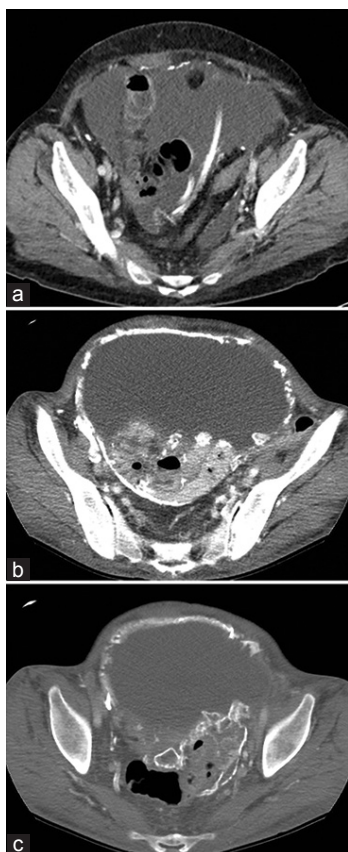


Figure 1: (a) Axial computed tomography image 5 years after initiation of peritoneal dialysis shows the peritoneal dialysis catheter with no peritoneal calcification. (b and c) Axial computed tomography images show extensive peritoneal calcification

This is an open access article distributed under the terms of the Creative Commons Attribution-NonCommercial-ShareAlike 3.0 License, which allows others to remix, tweak, and build upon the work non-commercially, as long as the author is credited and the new creations are licensed under the identical terms.

For reprints contact: reprints@medknow.com



Figure 2: Abdominal radiograph shows extensive peritoneal calcifications engulfing the small-bowel loops

Encapsulating peritoneal sclerosis is uncommon, but serious complication of continuous ambulatory PD with increasing prevalence with longer duration of PD approaching 20% after 8 years. Encapsulating peritoneal sclerosis is associated with high morbidity and mortality (56%) due to bowel obstruction, and it may clinically manifest with recurrent abdominal pain, prolonged dialysis sessions, hemoperitoneum, and dialysis failure.^[1,2]

Financial support and sponsorship

Nil.

Conflicts of interest

There are no conflicts of interest.

References

1. Rigby RJ, Hawley CM. Sclerosing peritonitis: The experience in Australia. *Nephrol Dial Transplant* 1998;13:154-9.
2. Ti JP, Al-Arabi A, Conlon PJ, Lee MJ, Morrin MM. Imaging features of encapsulating peritoneal sclerosis in continuous ambulatory peritoneal dialysis patients. *AJR Am J Roentgenol* 2010;195:W50-4.

How to cite this article: Sumayli AA, Alhendi ND. Encapsulating peritoneal sclerosis: A rare complication of peritoneal dialysis. *Arab J Intervent Radiol* 2018;2:36.

**Ahmed Ali Sumayli,
Nasser Dafer Alhendi**

Department of Medical Imaging, Division of Vascular Interventional Radiology, King Abdulaziz Medical City, Riyadh, Saudi Arabia

Address for correspondence:

*Dr. Ahmed Ali Sumayli,
Department of Medical Imaging, Division of Vascular Interventional Radiology, King Abdulaziz Medical City, P. O. Box: 22490, Riyadh 11426, Saudi Arabia.
E-mail: dr.ahmedsumayli@hotmail.com*

Access this article online

Website: www.arabjir.com

DOI: 10.4103/AJIR.AJIR_30_17

Quick Response Code:

