

An unusual case of osmotic demyelination syndrome without electrolyte changes in a patient with diabetes

Shrikant S. Kote, Ankur Khandelwal¹, Deba G. Pathak, Rupankar Nath

Abstract

Central pontine myelinolysis (CPM) is a demyelinating disease of the pons which is also associated with the demyelination of extrapontine areas of the central nervous system. Although the aetiology and pathogenesis are unclear, CPM is usually associated with hyponatremia or its rapid correction. Malnutrition and chronic alcoholism are also the common underlying conditions. Herein, we report a rare presentation of ODS, secondary to hyperosmolar hyperglycaemic state. We observed a 37-year-old female with diabetes type 1 and hypertension who presented with ataxia, dysarthria and pseudobulbar effect which evolved over a duration of few weeks at home with no evidence of hyponatremia or its rapid correction and no history of alcohol abuse or malnutrition.

Key words: Central pontine myelinolysis, diabetes mellitus, extrapontine myelinolysis, hyperosmolar hyperglycaemic state, osmotic demyelination syndrome

INTRODUCTION

Central pontine myelinolysis (CPM) is a non-inflammatory demyelinating disorder of the central portion of pons, first described by Adams *et al.*^[1] It is commonly associated with electrolyte imbalance is commonly associated with electrolyte imbalance, rapid correction of hyponatremia, chronic malnutrition, alcoholism, burns, chronic renal failure with dialysis and post-liver transplantation.^[2-8] Pontine and extrapontine myelinolysis (EPM) in patients with type 1 diabetes without electrolyte changes are usually rare and underdiagnosed. We report a case of a

Department of Anaesthesia and Critical Care, Silchar Medical College, Silchar, Assam, ²Institute of Liver and Biliary Sciences, New Delhi, India

Address for correspondence:

Dr. Shrikant Subhash Kote, Naikwadi Wada, Tal-Akole, Akole, Ahmednagar - 422 601, Maharashtra, India.
E-mail: shrikant_kote86@rediffmail.com

37-year-old female with type 1 diabetes who developed osmotic demyelination syndrome (ODS) after rapid correction of osmolarity with normal serum electrolyte levels. This would be the first report of ODS in diabetic patient, associated with hyperosmolar hyperglycaemic state (HHS) with normal serum electrolytes.

CASE REPORT

A 37-year-old female with a history of type 1 diabetes mellitus (DM) and hypertension was admitted with a history of dysarthria, ataxia, behavioural changes which were gradual in onset and progressive with Glasgow Coma Scale (GCS) 12/15 (E4V4M4). Her neurological examination revealed normal cranial nerves, with grade 5/5 power in all 4 limbs with ataxic gait. Detailed history revealed progressively increasing ataxia with dysarthria, clumsiness with emotional lability and

This is an open access article distributed under the terms of the Creative Commons Attribution-NonCommercial-ShareAlike 3.0 License, which allows others to remix, tweak, and build upon the work non-commercially, as long as the author is credited and the new creations are licensed under the identical terms.

For reprints contact: reprints@medknow.com

How to cite this article: Kote SS, Khandelwal A, Pathak DG, Nath R. An unusual case of osmotic demyelination syndrome without electrolyte changes in a patient with diabetes. *J Neuroanaesthesiol Crit Care* 2016;3:145-8.

Access this article online	
Quick Response Code:	Website: www.jnaccjournal.org
	DOI: 10.4103/2348-0548.182335

bilateral dysmetria which were progressively worsening over the last 10–14 days, knee and ankle jerks were present and flexor plantar response. Computed tomography scan brain was done within an hour and revealed normal study. Arterial blood gas analysis showed normal acid-base and lactate values. Laboratory investigations revealed white blood cells count of 11430/mm³, serum creatinine 0.59 mg/dL, blood urea nitrogen 30.5 mg/dL, Hb1Ac 8.8%, random blood sugar 482 mg/dL and serum osmolality of 327.66 mOsm/kg. Serum levels of sodium, potassium, calcium and magnesium were 140 mmol/dL, 3.35 mmol/L, 8 mg/dL and 1.9 mg/dL, respectively. Urine analysis showed the presence of glucose without ketone bodies

Patient was managed initially on the line of hyperglycaemic hyperosmolar state with 0.9% normal saline at 1 l/h and insulin therapy at 0.15 U/kg as intravenous (IV) bolus and 0.1 U/kg/h as infusion. Serial blood sugar and osmolality monitoring were done to avoid rapid shift in sugar level and osmolality. The serum osmolality fell to 300 mOsm/kg after 12 h of management and blood sugar level was controlled in the range of 200–280 mg/dL. However, after 6 h of initiating treatment, patient's sensorium deteriorated until GCS reached 4/15 (E2V1M1). The patient was then immediately shifted to Intensive Care Unit (ICU). Neurological examination revealed bilateral loss of knee jerk, ankle jerk and plantar reflex. Pupils were normal in size and responding to light stimuli, power was 1/5 in all the four extremities. Sensory assessment could not be performed due to poor GCS. Examination of cardiovascular and respiratory system was normal. Chest X-ray and electrocardiogram findings were within normal limits. In spite of SpO₂ 100%, PaO₂ 90 mmHg and PaCO₂ 38 mmHg, patient was intubated with 7.5 mm cuffed endotracheal tube primarily for airway protection. Oxygen at a flow rate of 6 L/min was delivered through T piece. Magnetic resonance imaging (MRI) of the brain revealed the T2 and fluid-attenuated inversion recovery hyperintensities in pons and right superior cerebral peduncle as well as bilateral caudate nuclei suggestive of pontine and extrapontine myelinolysis [Figures 1 and 2]. Hyperintensities were noted in bilateral periventricular white matter and bilateral corona radiata in diffusion weighted images which on apparent diffusion coefficient map shows reduced signal intensities suggestive of cytotoxic oedema [Figures 3 and 4]. Cerebrospinal fluid (CSF) analysis was normal with clear in appearance with glucose 150 mg/dL, CSF/blood sugar ratio 0.7, chloride 120 mEq/L, no lymphocytes and protein 20 mg/dL.

Treatment modalities included control of blood sugar between 200 and 280 mg/dL, through IV infusion of insulin as per sliding scale. Acid-base status and

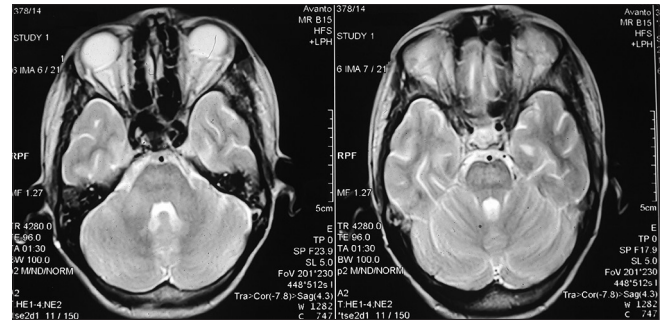


Figure 1: Hyperintensities were noted in bilateral periventricular white matter and bilateral corona radiata in diffusion-weighted images which on apparent diffusion coefficient map shows reduced signal intensities suggestive of cytotoxic oedema

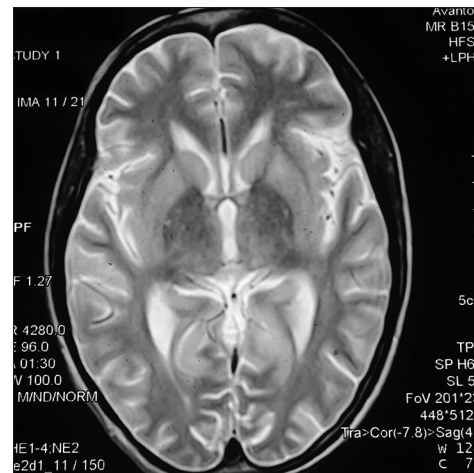


Figure 2: Magnetic resonance imaging of brain revealed the T2 and fluid-attenuated inversion recovery hyperintensities in pons and right superior cerebral peduncle as well as bilateral caudate nuclei suggestive of pontine and extrapontine myelinolysis



Figure 3: Hyperintensities were noted in bilateral periventricular white matter and bilateral corona radiata in diffusion-weighted images which on apparent diffusion coefficient map shows reduced signal intensities suggestive of cytotoxic oedema

electrolytes never fluctuated significantly during the course of treatment and sodium remained in between

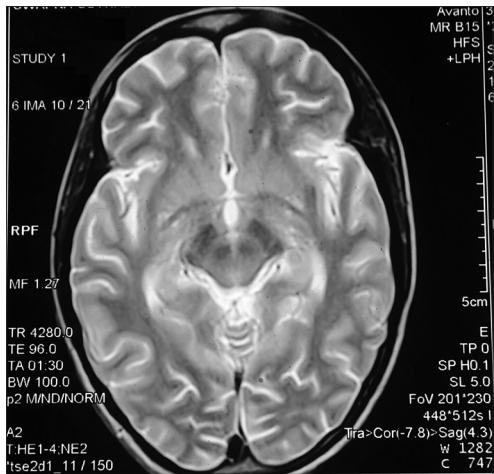


Figure 4: Hyperintensities were noted in bilateral periventricular white matter and bilateral corona radiata in diffusion-weighted images which on apparent diffusion coefficient map shows reduced signal intensities suggestive of cytotoxic oedema

140 and 145 mmol/L. Patient remained afebrile all throughout. On the 7th day of ICU admission, percutaneous tracheostomy was done. However, the neurological status never actually improved even until the 10th day. Follow-up MRI of brain was done and did not show any improvement in size and intensity of the area involved. However, the patient expired on the 15th day.

DISCUSSION

The concept of CPM was extended from 1962, with the recognition that lesions can occur outside the pons, so-called EPM. In 1976, a link between these disorders and the rapid correction of sodium in hyponatremic patients was suggested.^[1-4] The pathophysiology of CPM has not been well-understood, but it has become clear that CPM relates to the physiologic imbalance of osmoles in the brain.^[9] Histological studies have shown that oligodendroglial cells are most susceptible to CPM-related osmotic stresses, with the distribution of CPM changes paralleling the distribution of oligodendroglial cells that normally embed large neurons within the central pons, thalamus, cortex, putamen, lateral geniculate and other extrapontine sites.^[2,9-11] The transverse pontocerebellar fibres are most frequently involved, followed by long rostrocaudal tracts. Histologically, there is the preservation of neurons and axons, differentiating this process from a central pontine infarct.^[12] In malnourished states like in diabetic and alcoholic patients, due to lack of sufficient energy reserve causes imbalance in energy supply-demand results in pro-apoptotic drive which finally leads to demyelination of cells.^[13] Therefore, CPM results from multifactorial process and different mechanisms may also account for variable clinical courses observed among

patients with CPM. The clinical course of CPM has been classically described as biphasic,^[14] beginning with a generalised encephalopathy due to hyponatremia, which usually transiently improves following initial elevation of sodium. This is followed by a second neurologic syndrome, which occurs 2–3 days following correction or overcorrection of hyponatremia caused by myelinolysis. This latter phase is classically characterised by spastic quadriparesis and pseudobulbar palsy.

There are few reports documented about CPM occurring in diabetic patients^[15,16] without electrolyte changes. Casey *et al.*^[15] reported two cases of CPM as an unusual complication of diabetes showing asymptomatic or subclinical pontine lesions in long-standing poorly controlled diabetic patients. Yun *et al.*^[17] reported the asymptomatic EPM in a diabetic women. Furthermore, a case of asymptomatic CPM after severe hypoglycaemia without electrolyte changes has been reported by Chun *et al.* in the year 2005.^[18] Earlier CPM cases were reported in patients with hyperglycaemia with concomitant ketoacidosis, abnormality in serum sodium, or occurrence after treatment of the hyperglycaemic hyperosmolar state.^[19-21] Burns *et al.*,^[19] Guerrero *et al.*^[20] and O'Malley *et al.*^[21] reported the cases of pontine myelinolysis and complication associated with it after being treated for hyperglycaemia. There is a case report of EPM associated with hyperosmolar hyperglycaemic syndrome and hypernatremia by Koh *et al.*^[22] A case of CPM occurring secondary to hyperglycaemic hyperosmolar state and not secondary to the treatment of the hyperglycaemic hyperosmolar state is reported by Saini *et al.*^[23] The cause of pontine lesions in poorly controlled diabetic patients is probably due to renal dysfunction and osmolar shifts and high glucose levels induced cerebral oedema due to disruption of cerebral autoregulation, endothelial cells and blood brain barrier which leads to plasma leakage.^[24-26] There is no specific treatment for CPM and management is largely supportive. In our case, the patient was having long-standing poorly controlled type 1 DM with increased serum osmolality without electrolyte imbalance.

The present case is unique in some aspects such as the patient was presented with HHS without concomitant ketoacidosis or electrolyte imbalance. The symptoms of ODS were evolved gradually over the preceding 10–14 days long before she was hospitalised, suggests that patient presented as a complication of uncontrolled DM and not as a complication of treatment of HHS as shown by many previous studies. Furthermore, the clinical outcome in our case was worse and patient rapidly deteriorated and died, contrary to the previous studies by Burns *et al.*,^[19] Guerrero *et al.*^[20] and O'Malley *et al.*^[21] which showed a good recovery and prognosis.

In nutshell, the case report emphasises on long-standing uncontrolled DM as rare aetiology of ODS and highlights hyperosmolar hyperglycaemia as a cause of demyelination of brain cells. DM should be included as a grave aetiology of ODS.

CONCLUSION

Although CPM is a condition typically associated with rapid correction of hyponatremia, the syndrome might be clinically underdiagnosed in long-standing poorly controlled DM patients. Clinicians should be aware of the possibility of CPM when treating diabetic patients with neurologic disorders even if serum sodium or osmolality has not changed significantly.

Acknowledgement

We sincerely thank all our Intensive Care Unit staffs for helping us to prepare the manuscript.

Financial support and sponsorship

Nil.

Conflicts of interest

There are no conflicts of interest.

REFERENCES

- Adams RD, Victor M, Mancall EL. Central pontine myelinolysis: A hitherto undescribed disease occurring in alcoholic and malnourished patients. *AMA Arch Neurol Psychiatry* 1959;81:154-72.
- Norenberg MD, Leslie KO, Robertson AS. Association between rise in serum sodium and central pontine myelinolysis. *Ann Neurol* 1982;11:128-35.
- Sterns RH, Riggs JE, Schochet SS Jr. Osmotic demyelination syndrome following correction of hyponatremia. *N Engl J Med* 1986;314:1535-42.
- Laureno R. Central pontine myelinolysis following rapid correction of hyponatremia. *Ann Neurol* 1983;13:232-42.
- Messert B, Orrison WW, Hawkins MJ, Quagliari CE. Central pontine myelinolysis. Considerations on etiology, diagnosis, and treatment. *Neurology* 1979;29:147-60.
- McKee AC, Winkelman MD, Banker BQ. Central pontine myelinolysis in severely burned patients: Relationship to serum hyperosmolality. *Neurology* 1988;38:1211-7.
- McComb RD, Pfeiffer RF, Casey JH, Wolcott G, Till DJ. Lateral pontine and extrapontine myelinolysis associated with hypernatremia and hyperglycemia. *Clin Neuropathol* 1989;8:284-8.
- Bonham CA, Dominguez EA, Fukui MB, Paterson DL, Pankey GA, Wagener MM, *et al.* Central nervous system lesions in liver transplant recipients: Prospective assessment of indications for biopsy and implications for management. *Transplantation* 1998;66:1596-604.
- Brown WD. Osmotic demyelination disorders: Central pontine and extrapontine myelinolysis. *Curr Opin Neurol* 2000;13:691-7.
- Lampl C, Yazdi K. Central pontine myelinolysis. *Eur Neurol* 2002;47:3-10.
- Kleinschmidt-DeMasters BK, Norenberg MD. Rapid correction of severe hyponatremia causes demyelination: Relation to central pontine myelinolysis. *Science* 1981;211:1068-70.
- Graham DI, Lantos PL, editors. *Greenfield's Neuropathology*. 7th ed. London: Arnold, Oxford University Press; 2002.
- Ashrafian H, Davey P. A review of the causes of central pontine myelinolysis: Yet another apoptotic illness? *Eur J Neurol* 2001;8:103-9.
- Laureno R, Karp BI. Myelinolysis after correction of hyponatremia. *Ann Intern Med* 1997;126:57-62.
- Casey E, Evans A, Krentz A, Watkins P, Hopkins D. Central pontine myelinolysis. An unusual complication of diabetes. *Diabetes Care* 1999;22:998-1000.
- Ichikawa H, Murakami H, Katoh H, Hieda S, Kawamura M. Central pontine lesions observed with MRI in four diabetic patients. *Intern Med* 2008;47:1425-30.
- Yun SH, Kwon SB, Jung S, Seo HJ, Hwang SH. Asymptomatic extrapontine myelinolysis in diabetic woman. *J Korean Geriatr Soc* 2005;9:236-8.
- Chun SW, Kil UH, Hong EJ, Jo GJ, Park JW, Kim YJ, *et al.* A case of asymptomatic central pontine myelinolysis after severe hypoglycemia in a patient with diabetic nephropathy. *Korean J Nephrol* 2005;24:300-4.
- Burns JD, Kosa SC, Wijdicks EF. Central pontine myelinolysis in a patient with hyperosmolar hyperglycemia and consistently normal serum sodium. *Neurocrit Care* 2009;11:251-4.
- Guerrero WR, Dababneh H, Nadeau SE. Hemiparesis, encephalopathy, and extrapontine osmotic myelinolysis in the setting of hyperosmolar hyperglycemia. *J Clin Neurosci* 2013;20:894-6.
- O'Malley G, Moran C, Draman MS, King T, Smith D, Thompson CJ, *et al.* Central pontine myelinolysis complicating treatment of the hyperglycaemic hyperosmolar state. *Ann Clin Biochem* 2008;45(Pt 4):440-3.
- Koh CO, Yoon HS, Kim HK, Kim DM, Yoon DY, Lee JH, *et al.* A case of extrapontine myelinolysis associated with hyperosmolar hyperglycemic syndrome. *Korean J Med* 2005;68:320-4.
- Saini M, Mamaug MJ, Singh R. Central pontine myelinolysis: A rare presentation secondary to hyperglycaemia. *Singapore Med J* 2015;56:e71-3.
- Andreoli TE. Disorders of fluid volume, electrolyte and acid base balance. In: Wyngaarden JB, Smith LH, Bennett JC, editors. *Cecil Textbook of Medicine*. 19th ed. Philadelphia: W B Saunders Company; 1992.
- Skinhoj E, Strandgaard S. Pathogenesis of hypertensive encephalopathy. *Lancet* 1973;1:461-2.
- Iwata A, Koike F, Arasaki K, Tamaki M. Blood brain barrier destruction in hyperglycemic chorea in a patient with poorly controlled diabetes. *J Neurol Sci* 1999;163:90-3.