

## QUIZ

# Cardiology Quiz

**Elhadi Aburawi**

Department of Paediatric, Faculty of Medicine and Health Science, United Arab Emirates University, Al-Ain, UAE

Corresponding author: E Aburawi : [e.aburawi@uaeu.ac.ae](mailto:e.aburawi@uaeu.ac.ae)

Published: 01 December 2009

Ibnosina Journal of Medicine and Biomedical Sciences 2009, 1(3):

Received: 05 September 2009

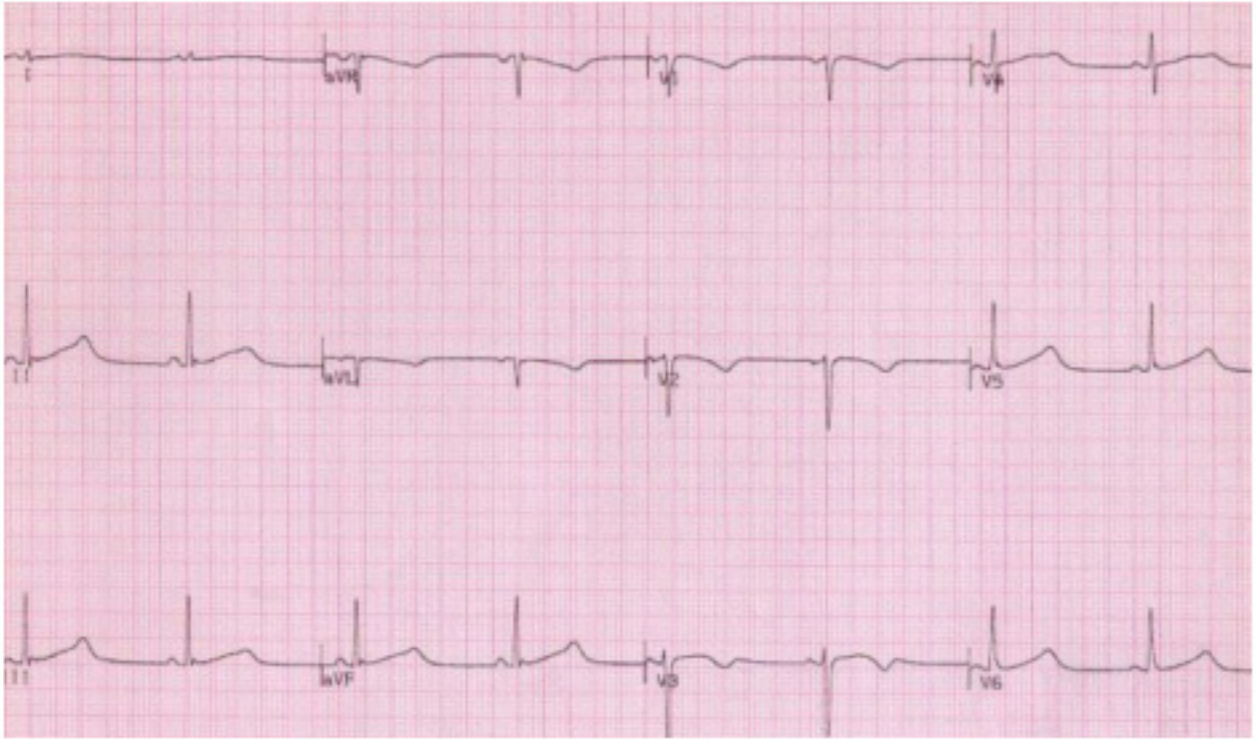
Accepted: 16 October 2009

This article is available from: <http://www.ijmbs.org>

This is an Open Access article distributed under the terms of the Creative Commons Attribution 3.0 License which permits unrestricted use, distribution, and reproduction in any medium, provided the original work is properly cited.

Examine the EKG on the second page then answer the following questions:

1. What are the abnormalities?
2. What is the diagnosis?
3. What are the complications?



Scroll down for the answer

The Answers:

1. QTc interval= 600 msec
2. Long QT syndrome (e.g. Ward-Romano syndrome/Jervell-Lang-Neilsen syndrome)
3. Ventricular tachyarrhythmia torsade de-Pointes, syncope and sudden death.

