

Access this article online

Quick Response Code:



Website:

www.jlponline.org

DOI:

10.4103/0974-2727.208263

# Acylation-stimulating protein is a surrogate biomarker for acute myocardial infarction: Role of statins

Hayder M. Al-Kuraishy, Ali I. Al-Gareeb

## Abstract:

**BACKGROUND:** Acylation-stimulating protein (ASP) is an adipokine synthesized within adipocytes environment due to adipocyte differentiation.

**AIM:** The aim of this study was to assess changes in ASP levels in patients with acute myocardial infarction (MI) and to correlate these variations with disease variables.

**SUBJECTS AND METHODS:** A total number of 111 patients previously and currently treated with rosuvastatin or atorvastatin presented with acute MI in a Coronary Care Unit, were divided into three groups, Group A: Thirty-nine patients treated with atorvastatin, Group B: Thirty patients treated with rosuvastatin, compared to 42 patients presented with MI not previously treated with statins were enrolled in this study. ASP and troponin-I levels and lipid profile were estimated in each group.

**RESULTS:** The effects of atorvastatin and rosuvastatin compared to nonstatins-treated group on the anthropometric and biochemical variables in patients with acute MI showed significant difference in all biochemical and anthropometric parameters  $P < 0.05$ . Serum ASP (nmol/l) levels were higher in control patients  $57.25 \pm 9.15$  compared to atorvastatin-treated patients  $48.43 \pm 7.42$  and rosuvastatin-treated patients  $49.33 \pm 6.52$   $P = 0.0124$ .

**CONCLUSION:** ASP levels are elevated in patients with acute MI and regarded as surrogate biomarker for acute MI also; therapy with statins leads to significant reduction in ASP levels compared to nonstatins-treated patients that presented with acute MI.

## Key words:

Acute myocardial infarction, acylation-stimulating protein, atorvastatin, rosuvastatin

## Introduction

Acylation-stimulating protein (ASP) is an adipokine synthesized within adipocytes environment due to adipocyte differentiation; it acts as autocrine molecules on adipocytes to increase glucose transport, fatty acid esterification, and then triglyceride (TG) synthesis.<sup>[1]</sup> The effects of ASP are mediated by a G-protein coupled receptor called C5 L2 receptor leading to inhibition of hormone sensitive lipase and augmentation of insulin action on adipocyte.<sup>[2]</sup> Generation of ASP occurs through activation of alternative pathways to complement system, when complement C3 interacts with adipsin during tissue injury C3a will be produced which is quickly cleaved by plasma carboxypeptidase to generate C3adesArg which called ASP due to its noticeable action on TG synthesis in adipocytes.<sup>[3]</sup> C3 and adipsin are produced from liver and

adipose tissue in response to insulin and plasma lipid levels thus; C3 and ASP are positively correlated with dyslipidemia, insulin resistance, obesity, and coronary heart diseases.<sup>[4]</sup>

ASP stimulates TG storage and glucose transporter 1 and 4 in adipocytes with significant inhibition of adipocyte lipolysis through the activation of adipocyte phosphodiesterase, therefore, ASP serum levels are correlated with postprandial lipemia since it responsible for the reduction of nonesterified-free fatty acids and TG clearance consequently ASP is highly correlated with TG levels and weakly correlated with low-density lipoprotein (LDL) and apo B levels.<sup>[5]</sup>

Animal model study by Xia *et al.* revealed that in ASP-deficient mice; there were a delays in TG clearance which is regulated by ASP administration.<sup>[6]</sup>

This is an open access article distributed under the terms of the Creative Commons Attribution-NonCommercial-ShareAlike 3.0 License, which allows others to remix, tweak, and build upon the work non-commercially, as long as the author is credited and the new creations are licensed under the identical terms.

For reprints contact: reprints@medknow.com

**How to cite this article:** Al-Kuraishy HM, Al-Gareeb AI. Acylation-stimulating protein is a surrogate biomarker for acute myocardial infarction: Role of statins. J Lab Physicians 2017;9:163-9.

Department of  
Pharmacology,  
Toxicology and  
Medicine, College  
of Medicine,  
Almustansiriya  
University, Baghdad,  
Iraq

## Address for correspondence:

Dr. Hayder M. Al-Kuraishy,  
Department of  
Pharmacology, Toxicology  
and Medicine, College of  
Medicine, Almustansiriya  
University,  
P.O. Box 14132,  
Baghdad, Iraq.  
E-mail: hayderm36@  
yahoo.com

Submission: 08-07-2016  
Accepted: 22-12-2016

Moreover, ASP resistance leads to high TG and low high-density lipoprotein cholesterol (HDL-c) due to delayed in TG clearance; these changes lead to high TG/HDL-c ratio which contributes into high LDL and consequently induction of dyslipidemia-induced coronary dysfunction.<sup>[7]</sup>

In addition, C3 and ASP levels are higher in hypertensive patients with and without coronary artery disease (CAD) thus; C3 regarded as an indicator of myocardial infarction (MI) and other ischemic events.<sup>[8]</sup>

Indeed, immunological changes appear to attend or follow MI and regarded as an independent risk factor regardless of the number of occluded vessels.<sup>[9]</sup>

Uses of statins therapy in the treatment and prevention of CAD were extensively studied depending on the clinical evidence of statins safety and efficacy.<sup>[10]</sup> In addition, statins modulate proinflammatory and anti-inflammatory cytokines in experimental MI in rats, atorvastatin significantly reduced interleukin-10 (IL-10), tumor necrosis factor, C-reactive protein, and plasminogen activator inhibitor-1.<sup>[11]</sup>

Therefore, this study was undertaken to assess changes in ASP levels in patients with acute MI and to correlate these variations with disease variables.

## Subjects and Methods

The study was done in the Department of Clinical Pharmacology and Therapeutic, College of Medicine, Al-Mustansiriya University, in cooperation with the Department of Cardiology; Al-Yarmouk Teaching Hospital, from October 2015 to February 2016, Baghdad-Iraq. This study was approved by the Clinical Research, Ethical Committee, College of Medicine, Al-Mustansiriya University. A total number of 111 patients (79 males, 32 females) previously and currently treated with rosuvastatin or atorvastatin presented with acute MI in a Coronary Care Unit (CCU), were divided into three groups, Group A: Thirty-nine patients (29 males + 10 females) treated with atorvastatin 20 mg/day, Group B: Thirty patients (20 males + 10 females) treated with rosuvastatin 20 mg/day, compared to 42 patients presented with MI not previously treated with statins (30 males + 12 females) were enrolled in this study. Each patient was clinically examined by a cardiologist, and the diagnosis was achieved through electrocardiographic (ECG) changes and cardiac troponin-I (cTnI). The inclusion criteria were patients with a recent acute MI admitted into the CCU. The exclusion criteria were patients with valvular heart diseases, malignant diseases, acute infection, inflammatory disorders and blood disorders, advanced renal disease, liver disease, and diabetes mellitus (DM). All enrolled patients gave written informed approval before their participations. The procedures were prepared according to the Declaration of Helsinki.<sup>[12]</sup>

After the interview, medical history, current drug pharmacotherapy and anthropometric measures were done. Body mass index (BMI) was estimated as kg/m<sup>2</sup>.<sup>[13]</sup> Ten milliliters of venous blood were withdrawn at 9 am after an overnight fasting, into a plain tube 5 ml (for routine investigations) and into an EDTA tube 5 ml for ASP and troponin I estimations.

ASP in nmol/L (Human ASP ELISA kit-LS-F4497) and troponin-I in pg/ml (Human cTnI ELISA Kit ab200016) serum levels were determined by ELISA KIT method at 450 nm according to the kit instructions.

Assessment of lipid profile: TG, total cholesterol (TC) and HDL were assessed by specific ELISA kits; from this profile, we can measure the followings:<sup>[14]</sup>

Atherogenic index (AI) =  $\log(TG/HDL)$ , when TG and HDL measured in mmol/l.

$LDL = TC - HDL - TG/5$ .

very LDL =  $TG/5$ .

Cardiac risk ratio (CRR) =  $TC/HDL$ .

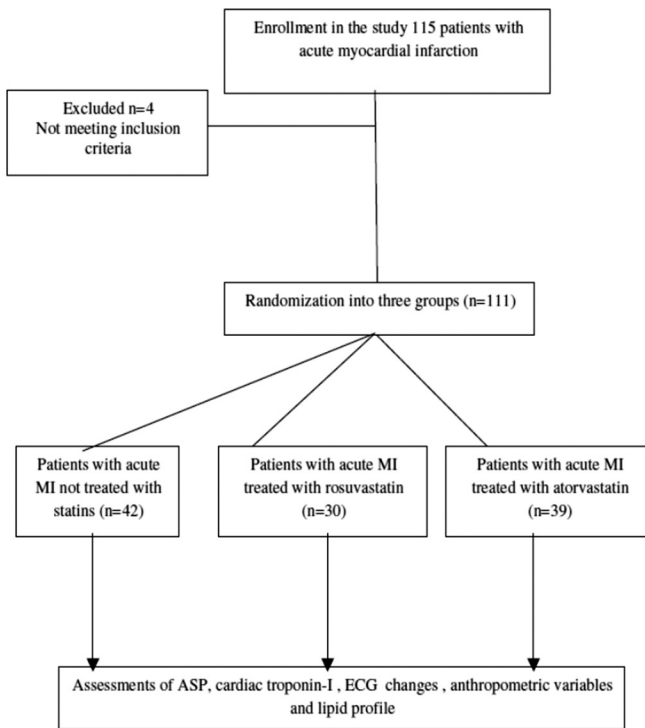
## Statistical analysis

The data were presented as mean  $\pm$  standard deviation, the unpaired Student's *t*-test was used for estimations of differences when  $P < 0.05$  regarded significant. All data were analyzed by means of SPSS version 22 (IBM Corp. Released 2013. IBM SPSS Statistics for Windows, Armonk, NY: IBM Corp). ANOVA was used to detect the significance of differences between treated groups compared to control. Bivariate correlation was used for correlating ASP with other disease variables.

## Results

Flowchart and outline of the protocol for patient's selection of acute MI and their enrollments in the study demonstrated that a total of 115 patients with acute MI were enrolled, only four patients were excluded because they were not met the inclusion criteria then; 111 (96.52%) patients were randomized into three groups: 39 patients (35.13%) treated with atorvastatin and 30 patients (20.02%) treated with rosuvastatin compared to 42 (37.83%) patients presented with MI not received statins regarded as controls [Figure 1].

Characteristics of patient presented with acute MI in the present study showed a higher percentage of male enrollments 79 (71.17%) compared to females enrollments 32 (28.82%). Most of recruited patients were of white race 95.65% compared to the dark race 4.35%. Regarding the types of MI in the present study according to the ECG records, anterior 57.65% and anterolateral 18.01% types were most types of presented MI compared to the other types, also 98.19% of them were positive about cardiac serum troponin-I, and only 1.89% patients were troponin-I negative. The associated diseases in the enrolled patients with acute MI were hypertension 85.58%, type 1 DM 1.89%, type 2 DM 57.65%, and dyslipidemia 85.58%. Moreover, 42.34% of the patient were chronic smokers, and 39.63 of patients disclosed a positive family history for CAD. The duration of statins therapy in the present study was  $24.94 \pm 6.29$  months for both atorvastatin and rosuvastatin. Other pharmacotherapy in concomitant with statins was aspirin 56.75%, oral hypoglycemic agents 57.65%, insulin 10.81%, clopidogrel 11.71%, and other agents regarding acute and intensive therapy for management of acute MI, [Table 1].



**Figure 1:** Flow chart and outline of the protocol for patient selection with acute myocardial infarction and their enrollments in the study

The effects of atorvastatin and rosuvastatin compared to nonstatins treated group on the anthropometric and biochemical variables in patients with acute MI showed significant difference in all biochemical and anthropometric parameters  $P < 0.05$ . Serum ASP (nmol/l) levels were higher in control patients  $57.25 \pm 9.15$  compared to atorvastatin-treated patients  $48.43 \pm 7.42$  and rosuvastatin-treated patients  $49.33 \pm 6.52$   $P = 0.0124$ , [Table 2].

Regarding the differences in effect of atorvastatin or rosuvastatin on the anthropometric and biochemical variables in patients with acute MI, serum TG (mg/dL) levels were low in atorvastatin-treated patients ( $155.64 \pm 13.22$ ) compared to  $166.38 \pm 12.73$  in rosuvastatin-treated patients significantly  $P = 0.0011$ , while LDL (mg/dL) levels were significantly low  $86.41 \pm 12.39$  in rosuvastatin-treated compared to  $93.92 \pm 11.67$  in atorvastatin-treated patients  $P = 0.013$ . In addition, AI in atorvastatin-treated patients was  $0.222 \pm 0.01$  which is significantly differing from rosuvastatin-treated patients  $P = 0.0163$ . There are nonsignificant differences in other biochemical parameters regarding ASP (nmol/l) levels which were  $48.43 \pm 7.42$  in atorvastatin-treated patients and  $49.33 \pm 6.52$  in rosuvastatin-treated patients  $P < 0.05$ , [Table 3].

ASP serum levels in atorvastatin and rosuvastatin-treated patients and control patients were positively correlated with all anthropometric and biochemical variables significantly  $P < 0.01$ , except for age, systolic blood pressure and fasting blood glucose in atorvastatin-treated patients  $P < 0.05$ , but ASP serum levels in both treated and untreated patients were negatively correlated with total serum TG significantly  $P = 0.0001$  and insignificantly with HDL-c  $P > 0.05$  [Table 4].

**Table 1: Demographic characteristics of the patient presented with acute myocardial infarction**

The characteristics	n (%), mean±SD
Number	111
Gender	
Males	79 (71.17)
Females	32 (28.82)
Male:female ratio	79:32
Age	64.45±12.33
Race, light-skinned:dark-skinned	66 (95.65):3 (4.35)
Types of MI	
Anterior	64 (57.65)
Posterior	6 (5.40)
Inferior	19 (17.11)
Anterolateral	20 (18.01)
Anteroseptal	13 (11.71)
Troponin positive	109 (98.19)
Troponin negative	2 (1.89)
Onset of chest pain (h)	5.3±1.66
Associated diseases	
Hypertension	95 (85.58)
Type 1 DM	2 (1.89)
Type 2 DM	64 (57.65)
Dyslipidemia	95 (85.58)
Positive family history for CAD	44 (39.63)
Complications of MI	
Arrhythmia	3 (2.70)
Acute heart failure	1 (0.9)
Cardiogenic shock	3 (2.70)
Pulmonary edema	2 (1.89)
Smokers	47 (42.34)
Statins therapy	69 (62.16)
Atorvastatin	39 (35.13)
Rosuvastatin	30 (20.02)
Duration (months)	24.94±6.29
Nonstatins	42 (37.83)
Other pharmacotherapy	
Aspirin	63 (56.75)
Oral hypoglycemic agents (metformin)	64 (57.65)
Insulin	12 (10.81)
Clopidogrel	13 (11.71)
Enoxaparin	45 (40.54)
Warfarin	33 (29.72)
B blockers	73 (65.76)
Calcium channel blockers	39 (35.13)
Angiotensin receptor blockers	71 (63.96)
Angiotensin converting enzyme inhibitors	13 (11.71)

The results are expressed as n (%), mean±SD. CAD = Coronary artery disease, SD = Standard deviation, DM= Diabetes mellitus, MI = Myocardial infarction

Therefore, levels of both ASP and cTnI are elevated in patients with acute MI compared to control  $P < 0.01$  [Figure 2].

### Discussion

The mechanisms of inflammatory process that implicated for myocardial damage after acute MI are not recognized, but reductions in the levels of complements indicating complement activations and stimulation of ASP during acute MI.<sup>[15]</sup>

**Table 2: The effect of atorvastatin or rosuvastatin compared to the control (nonstatins) on the anthropometric and biochemical variables in patients with acute myocardial infarction**

Variables	Non-statins (n=42)	Atorvastatin (n=39)	Rosuvastatin (n=30)	ANOVA
Age (years)	63.76±11.83	64.45±12.33*	64.45±12.33*	NS
BMI (kg/m <sup>2</sup> )	34.22±4.69	31.45±6.71*	32.55±6.29*	0.0002
SBP (mmHg)	166.63±12.44	144.51±22.93*	145.65±19.65*	0.0006
DBP (mmHg)	101.64±5.63	92.55±10.11*	91.22±9.39*	0.036**
Pulse P (mmHg)	64.99±5.73	51.96±9.37*	54.43±8.29*	0.0006
TC (mg/dL)	255.63±11.63	165.77±20.88*	162.29±21.33*	0.00054
TG (mg/dL)	222.11±13.62	155.64±13.22*	166.38±12.73*	0.0002
HDL-c (mg/dL)	35.62±7.66	40.73±5.24*	42.61±4.83*	0.034**
VLDL (mg/dL)	44.42±4.37	31.12±8.55*	33.27±7.42*	0.0004
LDL (mg/dL)	175.59±19.71	93.92±11.67*	86.41±12.39*	0.00058
AI	0.44±0.08	0.222±0.01*	0.232±0.02*	0.0005
CCR	7.17±0.22	4.06±1.21*	3.80±1.09*	0.0005
FBG (mg/dL)	145.34±7.29	135.73±11.62*	133.76±10.33*	0.0003
PPG (mg/dL)	167.27±6.62	144.60±17.27*	150.52±16.25*	0.0005
CTn-I (pg/ml)	82.62±16.41	77.64±9.42*	72.52±7.11*	0.01581**
ASP (nmol/l)	57.25±9.15	48.43±7.42*	49.33±6.52*	0.0124**

Results are expressed as mean±SD. \*P<0.01, \*\*P<0.05, NS = Nonsignificant compared to nonstatins group analyzed by ANOVA with Bonferroni *post hoc* test, BMI = Body mass index, SBP = Systolic blood pressure, DBP = Diastolic blood pressure, Pulse P = Pulse pressure, TC = Total cholesterol, TG = Total triglyceride, HDL-c = High-density lipoprotein cholesterol, VLDL = Very low density lipoprotein, LDL = Low density lipoprotein, AI = Atherogenic index (low risk <0.11, intermediate risk 0.11-0.21, high risk >0.21), CCR = Cardiac risk ratio, FBG = Fasting blood glucose, PPG = Postprandial glucose, CTn-I = Cardiac troponin-I, ASP = Acylation-stimulating protein, SD = Standard deviation

**Table 3: The differences in effect of atorvastatin or rosuvastatin on the anthropometric and biochemical variables in patients with acute myocardial infarction**

Variables	Atorvastatin (n=39)	Rosuvastatin (n=30)	t	95% CI upper-lower	P
Age (years)	64.45±12.33	63.33±12.74	0.3671	-4.9798-7.219	0.71
BMI (kg/m <sup>2</sup> )	31.45±6.71	32.55±6.29	-0.6995	-4.2414-2.041	0.48
SBP (mmHg)	144.51±22.93	145.65±19.65	-0.2221	-11.388-9.108	0.82
DBP (mmHg)	92.55±10.11	91.22±9.39	0.5641	-3.379-6.039	0.57
Pulse P (mmHg)	51.96±9.37	54.43±8.29	-1.159	-6.725-1.785	0.25
TC (mg/dL)	165.77±20.88	162.29±21.33	0.678	-6.780-13.740	0.50
TG (mg/dL)	155.64±13.22	166.38±12.73	-3.416	-17.021-4.459	0.0011*
HDL-c (mg/dL)	40.73±5.24	42.61±4.83	-1.5445	-4.311-0.551	0.12
VLDL (mg/dL)	31.12±8.55	33.27±7.42	-1.116	-5.995-1.695	0.26
LDL (mg/dL)	93.92±11.67	86.41±12.39	2.559	1.642-13.37	0.013**
AI	0.222±0.01	0.232±0.02	-2.508	-0.018--0.001	0.0163**
CCR	4.06±1.21	3.80±1.09	0.936	-0.294-0.814	0.35
FBG (mg/dL)	135.73±11.62	133.76±10.33	0.743	-3.320-7.260	0.45
PPG (mg/dL)	144.60±17.27	150.52±16.25	-1.459	-14.021-2.181	0.14
CTn-I (pg/ml)	77.64±9.42	75.52±7.11	1.065	-1.852-6.092	0.29
ASP (nmol/l)	48.43±7.42	49.33±6.52	-0.535	-4.258-2.458	0.59

Results are expressed as mean±SD, \*P<0.01, \*\*P<0.05. BMI = Body mass index, SBP = Systolic blood pressure, DBP = Diastolic blood pressure, Pulse P = Pulse pressure, TC = Total cholesterol, TG = Total triglyceride, HDL-c = High density lipoprotein cholesterol, VLDL = Very low density lipoprotein, LDL = Low density lipoprotein, AI = Atherogenic index (low risk<0.11, intermediate risk 0.11–0.21, high risk>0.21), CCR = Cardiac risk ratio, FBG = Fasting blood glucose, PPG = Postprandial glucose, CTn-I = Cardiac troponin-I, ASP = Acylation-stimulating protein, SD = Standard deviation, CI = Confidence interval

The present study revealed a significant increment in ASP serum levels in patients with acute MI, which in agreement with many previous studies that demonstrated a significant increase in ASP levels in patients with CAD, especially in those with concomitant dyslipidemia, hypertriglyceridemia, and type 2 DM<sup>[16,17]</sup> since; 57.65% of our patients were of type 2 DM.

Moreover, most of the recruited patients with MI in the present study were associated with hypertension, DM, high BMI, and dyslipidemia which may explain the elevated ASP levels in the current study that supported by Saleh *et al.*' study that revealed

an associations with high ASP levels and obesity, LDL, TG level, and waist/hip ratio which is the main predictor of ASP level.<sup>[18]</sup>

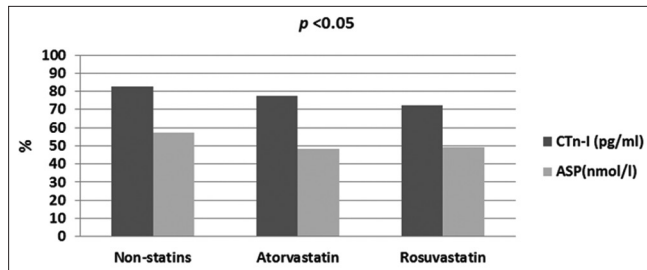
Indeed, elevated ASP levels in acute MI strongly predicted by obesity and dyslipidemia due to overproduction of ASP as consequence of ASP resistance, since ASP resistance causing metabolic alterations and lipid changes which contributed to the formation of atherogenic LDL that encourage AI and incidence of acute MI,<sup>[19]</sup> this may explain the elevated CRR and AI in association with high ASP levels in patients with acute MI of the present study.



**Table 4: Correlations of acylation-stimulating protein serum levels with lipid profile and anthropometric variables in patient with acute myocardial infarction treated with and without statins**

Correlations of ASP (nmol/l)	Atorvastatin (n=39)		Rosuvastatin (n=30)		Non-statins (n=42)	
	r	P	r	P	r	P
Age (years)	0.4429	0.005*	0.4329	0.016**	0.0585	0.48
BMI (kg/m <sup>2</sup> )	0.685	0.0001*	0.644	0.0001*	0.885	0.0001*
SBP (mmHg)	0.436	0.006*	0.422	0.019**	0.0923	0.397
DBP (mmHg)	0.834	0.0001*	0.634	0.0001*	0.5552	0.0001*
Pulse P (mmHg)	0.8651	0.0001*	0.6675	0.0001*	0.8207	0.0001*
TC (mg/dL)	-0.6358	0.0001*	-0.7322	0.0001*	-0.7044	0.0001*
TG (mg/dL)	0.9569	0.0001*	0.8544	0.0001*	0.5352	0.0001*
HDL-c (mg/dL)	-0.0416	0.29	-0.0622	0.278	-0.0522	0.26
VLDL (mg/dL)	0.999	0.0001*	0.784	0.0001*	0.722	0.0001*
LDL (mg/dL)	-0.7443	0.0001*	-0.8532	0.0001*	-0.6533	0.0001*
FBG (mg/dL)	0.3896	0.015**	0.4896	0.006*	-0.639	0.0001*
PPG (mg/dL)	0.6367	0.0001*	0.7111	0.0001*	0.829	0.0001*
CTn-I (pg/ml)	0.8958	0.0001*	0.7804	0.0001*	0.9833	0.0001*

Bivariate correlation \*P<0.05, \*\*P<0.01. BMI = Body mass index, SBP = Systolic blood pressure, DBP = Diastolic blood pressure, Pulse P = Pulse pressure, TC = Total cholesterol, TG = Total triglyceride, HDL-c = High-density lipoprotein cholesterol, VLDL = Very low density lipoprotein, LDL = Low-density lipoprotein, FBG = Fasting blood glucose, PPG = Postprandial glucose, CTn-I = Cardiac troponin-I, ASP = Acylation-stimulating protein



**Figure 2:** Differential effects of statins on acylation-stimulating protein and cardiac troponin-I in patients with acute myocardial infarction

In addition, ethnic difference in ASP levels showed by Scantlebury-Manning *et al.* study that pointed out to the higher levels of ASP in Caucasian due to higher TG fasting levels and ASP resistance compared to the other ethnic population that associated with low fasting TG level and higher ASP sensitivity,<sup>[20]</sup> these findings are in agreement with finding of the present study since; all of enrolled patients were Caucasian that associated with high ASP levels.

Regarding statins pharmacotherapy, in statins-treated patients with acute MI showed a significant low ASP levels compared to the non-statins treated patient, both rosuvastatin and atorvastatin decreases ASP levels indirectly through modulation of complement which is regarded as precursor of ASP, since C3 play a role in initiations of CAD and cardiovascular complications.<sup>[21]</sup> Furthermore, CAD is associated with higher fasting and postprandial C3 due to elevated TG levels which upregulate C3 that encourage premature microvascular and macrovascular complications through C3 itself or ASP which is the end product of C3 activations.<sup>[22]</sup>

In addition, Halkes *et al.*, study demonstrated that simvastatin therapy in patients with CAD significantly lowers C3 levels and then indirectly ASP serum levels<sup>[23]</sup> that consistent with findings of the present study, but unfortunately serum C3 levels were not measured in the present study. In addition, terminal complement complex, ASP, and other inflammatory

biomarkers that involved in pathogenesis of CAD appears to be a direct stimulant of 3-hydroxy-3-methylglutaryl coenzyme A (HMG-CoA), thus HMG-CoA inhibitors such as cerivastatin will decrease ASP levels and other inflammatory mediator like IL-6<sup>[24]</sup> which may explain the statins effect on ASP levels on CAD in the current study.

Both atorvastatin and rosuvastatin in the present study showed comparable effects with significant differences in LDL, TG, and AI, since rosuvastatin is more potent and more efficacious than atorvastatin as supported by Qian *et al.*, who disclosed a superior effect of rosuvastatin to atorvastatin effect on CAD,<sup>[25]</sup> but there was insignificant differences between them regarding the ASP lowering effect, both decreases C3 and subsequently; ASP serum levels in patients with dyslipidemia and CAD.<sup>[26,27]</sup>

Regarding other treatment for patients presented with acute MI, metformin drug was used in 57.65% of our patients due to type 2 DM, thus reduction in ASP levels might be due to metformin effects as observed by Oktenli *et al.*, study that revealed a significant reduction in ASP levels in women patients with polycystic ovary syndrome following 3 months therapies with metformin;<sup>[28]</sup> however, the selected effect of metformin on ASP levels was not estimated at the present study since; we have a previous study regarding the cardioprotective effect of metformin in patients presented with acute MI that previously treated with metformin.<sup>[29]</sup>

ASP levels were negatively correlated with LDL cholesterol (LDL-c), HDL-c, and TC in both statins- and nonstatins-treated patients with acute MI, and positively correlated with other lipid profile and anthropometric variables, these findings are correlated with Jiang *et al.*, findings that revealed a significant association and correlation between high serum ASP levels and total TG and BMI with significant negative correlation with LDL-c, HDL-c, and TC in diabetic obese patients regarding Han and Hui populations.<sup>[30]</sup>

Furthermore, ASP levels were positively correlated with cTnI in patients with acute MI regardless of statins therapy, since

ASP levels are positively correlated with severity of CAD and cTnI indicating that ASP is implicated in pathogenesis of CAD due to metabolic alterations in lipid profile.<sup>[31]</sup>

There are numerous limitations of the current study, relative small sample size, determination of ASP receptors in coronary vessels, and HMG-CoA activity in response to the ASP levels are the main points that limit the present study. On the other hand, this study may be to our knowledge, the first novel study regarding the effect of statins on ASP levels in CAD.

### Conclusion

In summary, this study shows that ASP levels are elevated in patients with acute MI and regarded as surrogate biomarker for acute MI also; therapy with statins lead to significant reduction in ASP levels compared to non-statin treated patients that presented with acute MI.

### Acknowledgment

We would like to thank Professor Dr. Sadiq Alhamash Head of Almustansiriyia University for his great supports.

### Financial support and sponsorship

Nil.

### Conflicts of interest

There are no conflicts of interest.

### References

1. Rezvani R, Gupta A, Smith J, Poursharifi P, Marceau P, Pérusse L, *et al.* Cross-sectional associations of acylation stimulating protein (ASP) and adipose tissue gene expression with estradiol and progesterone in pre- and postmenopausal women. *Clin Endocrinol (Oxf)* 2014;81:736-45.
2. Liu Y, Gupta P, Lapointe M, Yotsapon T, Sarat S, Cianflone K. Acylation stimulating protein, complement C3 and lipid metabolism in ketosis-prone diabetic subjects. *PLoS One* 2014;9:e109237.
3. Thérout P, Martel C. Complement activity and pharmacological inhibition in cardiovascular disease. *Can J Cardiol* 2006;22 Suppl B: 18B-24B.
4. Kildsgaard J, Zsigmond E, Chan L, Wetsel RA. A critical evaluation of the putative role of C3adesArg (ASP) in lipid metabolism and hyperapobetalipoproteinemia. *Mol Immunol* 1999;36:869-76.
5. Magnusson B, Asp L, Boström P, Ruiz M, Stillemark-Bilton P, Lindén D, *et al.* Adipocyte differentiation-related protein promotes fatty acid storage in cytosolic triglycerides and inhibits secretion of very low-density lipoproteins. *Arterioscler Thromb Vasc Biol* 2006;26:1566-71.
6. Xia Z, Sniderman AD, Cianflone K. Acylation-stimulating protein (ASP) deficiency induces obesity resistance and increased energy expenditure in ob/ob mice. *J Biol Chem* 2002;277:45874-9.
7. Sivakumar K, Bari MF, Adaikalakoteswari A, Guller S, Weickert MO, Randeve HS, *et al.* Elevated fetal adiponin/acylation-stimulating protein (ASP) in obese pregnancy: Novel placental secretion via Hofbauer cells. *J Clin Endocrinol Metab* 2013;98:4113-22.
8. Cianflone K, Zhang XJ, Genest J Jr., Sniderman A. Plasma acylation-stimulating protein in coronary artery disease. *Arterioscler Thromb Vasc Biol* 1997;17:1239-44.
9. Al-Ahmad RS, Mahafzah AM, Al-Mousa EN. Immunological changes in acute myocardial infarction. *Saudi Med J* 2004;25:923-8.
10. Baigent C, Keech A, Kearney PM, Blackwell L, Buck G, Pollicino C, *et al.* Efficacy and safety of cholesterol lowering treatment: Prospective metaanalysis of data from 90,056 participants in 41 randomised trials of statins. *Lancet* 2005;366:1267-78.
11. Tawfik MK, Ghattas MH, Abo-Elmatty DM, Abdel-Aziz NA. Atorvastatin restores the balance between pro-inflammatory and anti-inflammatory mediators in rats with acute myocardial infarction. *Eur Rev Med Pharmacol Sci* 2010;14:499-506.
12. General Assembly of the World Medical Association. World Medical Association Declaration of Helsinki: Ethical principles for medical research involving human subjects. *J Am Coll Dent* 2014;81:14-8.
13. Reinders I, Murphy RA, Martin KR, Brouwer IA, Visser M, White DK, *et al.* Body mass index trajectories in relation to change in lean mass and physical function: The health, aging and body composition study. *J Am Geriatr Soc* 2015;63:1615-21.
14. Aditya GP, Bari MA. Lipid profile in post-acute coronary syndrome setting: Lipidic risk assessment in young people beyond LDL-C. *Mymensingh Med J* 2015;24:697-703.
15. Latet SC, Hoymans VY, Van Herck PL, Vrints CJ. The cellular immune system in the post-myocardial infarction repair process. *Int J Cardiol* 2015;179:240-7.
16. Cianflone K, Xia Z, Chen LY. Critical review of acylation-stimulating protein physiology in humans and rodents. *Biochim Biophys Acta* 2003;1609:127-43.
17. Zheng YY, Xie X, Ma YT, Yang YN, Fu ZY, Li XM, *et al.* A novel polymorphism (901G > A) of C5L2 gene is associated with coronary artery disease in Chinese Han and Uyghur population. *Lipids Health Dis* 2013;12:139.
18. Saleh J, Wahab RA, Farhan H, Al-Amri I, Cianflone K. Plasma levels of acylation-stimulating protein are strongly predicted by waist/hip ratio and correlate with decreased LDL size in men. *ISRN Obes* 2013;2013:342802.
19. Saleh J, Cianflone K, Chaudhary T, Al-Riyami H, Al-Abri AR, Bayoumi R. Increased plasma acylation-stimulating protein correlates with hyperlipidemia at late gestation. *Obesity (Silver Spring)* 2007;15:646-52.
20. Scantlebury-Manning T, Bower J, Cianflone K, Barakat H. Racial difference in acylation stimulating protein (ASP) correlates to triglyceride in non-obese and obese African American and Caucasian women. *Nutr Metab (Lond)* 2009;6:18.
21. Onat A, Can G, Rezvani R, Cianflone K. Complement C3 and cleavage products in cardiometabolic risk. *Clin Chim Acta* 2011;412:1171-9.
22. Cui G, Li Z, Li R, Huang J, Wang H, Zhang L, *et al.* A functional variant in APOA5/A4/C3/A1 gene cluster contributes to elevated triglycerides and severity of CAD by interfering with microRNA 3201 binding efficiency. *J Am Coll Cardiol* 2014;64:267-77.
23. Halkes CJ, van Dijk H, de Jaegere PP, Plokker HW, van Der Helm Y, Erkelens DW, *et al.* Postprandial increase of complement component 3 in normolipidemic patients with coronary artery disease: Effects of expanded-dose simvastatin. *Arterioscler Thromb Vasc Biol* 2001;21:1526-30.
24. Viedt C, Shen W, Fei J, Kamimura M, Hänsch GM, Katus HA, *et al.* HMG-CoA reductase inhibition reduces the proinflammatory activation of human vascular smooth muscle cells by the terminal complement factor C5b-9. *Basic Res Cardiol* 2003;98:353-61.
25. Qian C, Wei B, Ding J, Wu H, Cai X, Li B, *et al.* Meta-analysis comparing the effects of rosuvastatin versus atorvastatin on regression of coronary atherosclerotic plaques. *Am J Cardiol* 2015;116:1521-6.
26. Timár O, Szekanez Z, Kerekes G, Végh J, Oláh AV, Nagy G, *et al.* Rosuvastatin improves impaired endothelial function, lowers high sensitivity CRP, complement and immunocomplex

- production in patients with systemic sclerosis – A prospective case-series study. *Arthritis Res Ther* 2013;15:R105.
27. Muscari A, Bastagi L, Poggiopollini G, Tomassetti V, Massarelli G, Boni P, *et al.* Short term effect of atorvastatin and vitamin E on serum levels of C3, a sensitive marker of the risk of myocardial infarction in men. *Cardiovasc Drugs Ther* 2001;15:453-8.
  28. Oktenli C, Ozgurtas T, Dede M, Sanisoglu YS, Yenen MC, Yesilova Z, *et al.* Metformin decreases circulating acylation-stimulating protein levels in polycystic ovary syndrome. *Gynecol Endocrinol* 2007;23:710-5.
  29. Alkuraishy HM, Al-Gareeb AI. New insights into the role of metformin effects on serum omentin-1 levels in acute myocardial infarction: Cross-sectional study. *Emerg Med Int* 2015;2015:283021.
  30. Jiang H, Liu X, Wang D, Guo F, Liu J, Liang X, *et al.* Association of acylation-stimulating protein and receptor gene polymorphisms with coronary heart disease in Han and Hui populations. *Int J Clin Exp Med* 2015;8:18779-85.
  31. Jiang H, Guo M, Dong L, Cao C, Wang D, Liang X, *et al.* Levels of acylation stimulating protein and the complement component 3 precursor are associated with the occurrence and development of coronary heart disease. *Exp Ther Med* 2014;8:1861-6.