

Endoscopic Image of Early Mucinous Carcinoma of the Sigmoid Colon

H. Yoshikane¹, K. Mizuno¹,
A. Sakakibara¹, H. Hidano¹,
Y. Takahashi², T. Yokoi³

¹ Dept. of Internal Medicine,
Handa City Hospital, Handa, Aichi, Japan

² Dept. of Pathology,
Handa City Hospital, Handa, Aichi, Japan

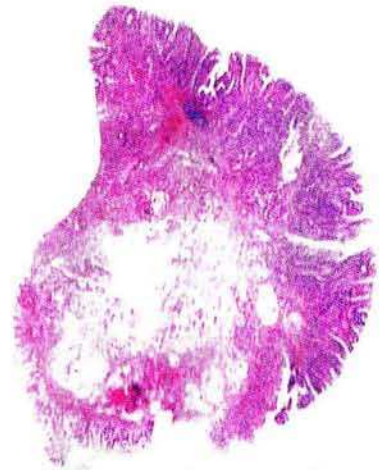
³ Division of Pathology,
Aichi Medical University, Aichi, Japan

Corresponding Author

H. Yoshikane, M.D.
Dept. of Internal Medicine
Handa City Hospital
2-29 Toyo-cho, Handa, Aichi 475
Japan
Fax: +81 (569) 243253



Mucinous carcinoma of the colon, i.e., a carcinoma containing a mucinous histologic pattern in 50–60% or more of the tumor, is rare. There have been a few cases confined to the submucosa, defined as early carcinoma, in the Japanese literature. Colonoscopy in a 50-year-old woman revealed a subpedunculated tumor 20 mm in diameter in the sigmoid colon



Pathology demonstrated a moderately differentiated adenocarcinoma in the mucosa and a mucinous component in the submucosa. (H&E×1.5). The final diagnosis by additional surgery was early mucinous carcinoma of the sigmoid colon