



An Eggshell-Based Toothpaste as a Cost-Effective Treatment of Dentin Hypersensitivity

Ensanya A. Abou Neel^{1,2,3} Turki A. Bakhsh⁴

¹Department of Preventive and Restorative Dentistry, College of Dental Medicine, University of Sharjah, Sharjah, United Arab Emirates

²Department of Biomaterials, Faculty of Dentistry, Tanta University, Tanta, Egypt

³Division of Biomaterials and Tissue Engineering, UCL Eastman Dental Institute, Royal Free Hospital, UCL Medical School, Hampstead, London, United Kingdom

⁴Department of Restorative Dentistry, Faculty of Dentistry, King Abdulaziz University, Jeddah, Saudi Arabia

Address for correspondence Ensanya A. Abou Neel, PhD, Department of Preventive and Restorative Dentistry, College of Dental Medicine, University of Sharjah, P.O. Box, 27272, Sharjah, United Arab Emirates (e-mail: eabouneel@sharjah.ac.ae; e.abouneel@ucl.ac.uk).

Eur J Dent 2021;15:733–740.

Abstract

Objectives This study aimed to test the efficacy of two experimentally produced eggshell-based toothpastes on dentinal tubules occlusion.

Materials and Methods Two experimental eggshell toothpastes, based on natural ingredients, with or without titanium dioxide nanoparticles (TNPs) were produced and coded “TNPs eggshell toothpaste [TNPESTP]” or “eggshell toothpaste [ESTP],” respectively. Mid-coronal dentin discs, from 28 human extracted molar teeth, etched with 37% phosphoric acid for 60 seconds to simulate the hypersensitive dentin, were randomly divided into four groups—G1: no treatment (negative control), G2: ESTP treated, G3: TNPESTP treated, and G4: Biorepair treated (positive control). All treated discs were brushed for 2 weeks and 1 month using a toothbrush simulator at 40 mm/s. Dentinal tubules occlusion was studied using a cross-polarization optical coherence tomography (CP-OCT) and scanning electron microscopy (SEM).

Statistical Analysis Unpaired *t*-test was conducted using GraphPad software (San Diego, California, United States). Continuous variables were expressed as means \pm standard deviation and $p < 0.05$ was considered statistically significant.

Results From CP-OCT, a marked increase in surface reflectivity of dentin was observed after brushing with tested toothpastes. ESTP and NPSESTP showed higher or comparable grayscale values than Biorepair indicating increase in surface density of dentin. From SEM, at 2 weeks, ESTP showed comparable number of completely occluded dentinal tubules to Biorepair. TNPESTP showed significantly lower numbers of CODT than Biorepair. At 1 month, the number of CODT was difficult to count for all treated groups. Both ESTP and TNPESTP showed significantly higher numbers of partially occluded dentinal tubules than Biorepair.

Conclusion ESTP or TNPESTP could offer a cost-effective substitute for the treatment of dentin hypersensitivity.

Keywords

- ▶ eggshell
- ▶ titanium dioxide nanoparticles
- ▶ dentin hypersensitivity
- ▶ optical coherence tomography
- ▶ scanning electron microscopy

published online
August 24, 2021

DOI <https://doi.org/10.1055/s-0041-1729676>
ISSN 1305-7456

© 2021. European Journal of Dentistry.

This is an open access article published by Thieme under the terms of the Creative Commons Attribution-NonDerivative-NonCommercial-License, permitting copying and reproduction so long as the original work is given appropriate credit. Contents may not be used for commercial purposes, or adapted, remixed, transformed or built upon. (<https://creativecommons.org/licenses/by-nc-nd/4.0/>).

Thieme Medical and Scientific Publishers Pvt. Ltd. A-12, 2nd Floor, Sector 2, Noida-201301 UP, India

Introduction

Dentin hypersensitivity (DH) is a major health care problem affecting both younger and older populations. It is characterized by a short, sharp pain of unexplained reason that might occur in response to chemical (e.g., excessive acidic drinks or bleaching) or mechanical factors (e.g., vigorous tooth brushing). In older population, DH can be associated with root exposure especially after periodontal treatment.¹

The most accepted theory, explaining the pain associated with DH, is “hydrodynamic” that relates it to the stimulation of baroreceptors in response to fluid movement within dentinal tubules. The more opened the dentinal tubules, the more severe the pain. Occlusion of dentinal tubules was therefore considered as the main treatment option for reducing DH.²⁻⁴ Many commercially available toothpastes have been proposed for such purpose. They depend on the incorporation of active ingredients with remineralizing potential⁵ such as nano-hydroxyapatite (e.g., Biorepair Fast Sensitive Repair),⁶ casein phosphopeptide-amorphous calcium phosphate (e.g., GC tooth mousse),⁷ or fluoride (e.g., Sensodyne Repair & Protect).⁸ However, there is no gold standard toothpaste that could afford complete and persistent cure. The action of most toothpastes is only temporary and any dietary challenge (e.g., acidic drinks) might remove the blocking agent and reopen the dentinal tubules. Due to the slow release of some active ingredients, the effectiveness of these toothpastes might take several weeks.

Recently, the use of natural products as a cost-effective treatment option has gained popularity. Eggshell powder (ESP) has attracted researchers' attention as enriched vitamin-mineral supplements for postmenopausal women for the prevention and treatment of osteoporosis.^{9,10} ESP is a rich source of calcium, phosphorus, strontium, zinc, fluoride, and copper that could help in remineralization.^{11,12} It increases bone density,¹³ and reduces resorption and pain. When tested in rats and human, it shows antirachitic effect.¹⁴ In dentistry, ESP found an interest as a pulp capping material¹⁵ and in treating enamel erosion.¹⁶

This study is therefore aimed to develop toothpastes based on: (1) ESP as a rich source of ions for remineralization, (2) potato powder as a source of fluoride,¹⁷ (3) baking soda as a source of sodium, (4) titanium dioxide nanoparticles (TNPs) due to its antibacterial action,¹⁸ and (5) clove oil due to its sedative¹⁹ and inhibitory action on demineralization.²⁰ The efficacy of these experimental toothpastes on dentin remineralization was compared with “Biorepair Fast Sensitive Repair.” The null hypothesis was “there is no significance in the difference between experimental toothpastes and Biorepair Fast Sensitive Repair on dentinal tubules' occlusion.”

Materials and Methods

Experimental Toothpaste Preparation

The composition of the two experimental toothpastes as well as Biorepair Fast Sensitive Repair that was used as a positive control is given in ►Table 1.

Preparation of Dentin Discs

A total of 28 human extracted third molar teeth were used after getting ethical approval (no. 102-11-17). Mid-coronal dentin discs of approximately 1 mm thickness were prepared using a diamond saw (TechCut 4TM, Allied, United States) and mounted in a self-cure acrylic resin. The discs were smoothed with #240, 400, and 600 grit silicon carbide, etched with 37% phosphoric acid for 60 seconds, ultrasonically washed with distilled water for 2 minutes and left to air dry for few minutes. Etched dentin discs were then randomly divided into four groups as follow: G1: etched dentin received no treatment as a negative control ($n = 4$), G2: etched dentin brushed with eggshell toothpaste (ESTP) ($n = 8$), G3: etched dentin brushed with TNPs eggshell toothpaste (TNPESTP) ($n = 8$), and G4: etched dentin brushed with Biorepair as a positive control ($n = 8$).

Tooth Brushing Simulation

A slurry from each toothpaste was prepared at a toothpaste: distilled water ratio of 1:3. Samples were mounted on the toothbrush simulator (ZM-3.8, SD Mechatronic GmbH, Germany) and approximately 10 mL of the toothpaste slurry was used to cover each dentin disc. The tooth brushing was carried out using classic soft brushes at 40 mm/s in a circular motion to simulate a period of 2 and 4 weeks. Assuming that the brushing is three times/day; each time takes 3 minutes and the number of teeth is 28, the brushing time (minute) for each tooth, that corresponds to 2 or 4 weeks, was calculated from the following equation:

$$\text{Brushing time minute} = \frac{\text{No. of brushing per day} \times \text{time of brushing (minute)}}{\text{No. of teeth in a mouth} \times \text{no. of days}}$$

The brushing time was then converted into cycles, taking into account that each cycle takes a second (i.e., 60 cycles/min) using the following equation:

$$\text{No. of brushing cycles} = \text{Brushing time minute} \times \text{no. of cycles per minute}$$

At each time point, dentin discs were removed and washed with distilled water and left to air dry.

Table 1 Composition of experimental and control toothpastes used in this study

Toothpaste (code)	Composition
Eggshell toothpaste (ESTP)	7 g eggshell powder 1 g potato powder 1 g baking soda 1 g oil of clove
Titanium dioxide nanoparticles-containing eggshell toothpaste (TNPs-ESTP)	7 g eggshell powder 1 g potato powder 1 g baking soda 1 g titanium dioxide nanoparticles 1 g oil of clove
Biorepair Fast Sensitive Repair (Biorepair)	Aqua, zinc hydroxyapatite, glycerin, sorbitol, silica, PEG-32, cellulose gum, aroma, sodium myristoyl sarcosinate, sodium methyl cocoyl taurate, citric acid, phenox-ethanol, benzyl alcohol, sodium benzoate

Cross-Polarization Optical Coherence Tomography

A cross-polarization optical coherence tomography (CP-OCT; IVS-300, Santec, Japan) was used to examine the dentin samples. A continuous wavelength scanning diode laser centered near 1,310 nm with a wavelength range of 100 nm was used at a scanning rate of 30 kHz, axial resolution of approximately 12 μm and lateral resolution of 30 μm . The samples were scanned in a noncontact mode. The size of the cross-section (B-scan; two-dimensional [2D]) was about 500 \times 924 pixels which correspond to 5 \times 8.18 mm² (X, Z). The specimen was placed on a micrometer stage with the treated surface positioned perpendicular to the projected OCT light source and away from the handheld OCT probe by 0.5 mm to obtain three tomographic images at every 500 μm . The obtained OCT data were analyzed using an image analysis software (ImageJ v. 1.45q, National Institutes of Health).^{21,22} The obtained data were converted to eight-bit grayscale, followed by adjusting the dentin surface with horizontal plane (zero degree) followed by adjusting the scale according to the acquired OCT data (pixel size). Then, five equal areas (0.20 mm width \times 0.50 mm depth) as a representative dimension of the area of interest (AOI) were selected within the outer dentin surface at different locations. Then, the maximum pixel values (MPVs) of AOI were measured from the OCT grayscale image by analyzing the intensity of light by linearly scaling the pixels from minimum to maximum, which is basically 0 to 255 as a display range where zero corresponds to black pixel (i.e., low signal interference), while 255 corresponds to white pixel (i.e., high signal scattering and interference).

Scanning Electron Microscopy

Dentin discs were dried using serial dilution of alcohol, critically dried for 30 minutes, mounted on metal stubs, coated with carbon, and examined using scanning electron microscopy (SEM, JEOL JSM6480LV, United States) after sputter coating. Mean \pm standard deviation (SD) of the diameter and number of opened, partially closed, and completely closed dentinal tubules in an area of 125 \times 90 μm^2 for each group after 2 weeks and 1 month was calculated.

Statistical Analysis

For the number of opened and partially closed dentinal tubules, the unpaired *t*-test was conducted using GraphPad software (San Diego, California, United States). Continuous variables were expressed as means \pm SD and *p* < 0.05 was considered statistically significant.

Results

Cross-Polarization Optical Coherence Tomography

In OCT imaging, the detected interference along the course of the laser beam at a specific location inside a scattering biological structure is described as A-scan, which demonstrated as a profile of signal intensity. A compilation of A-scan with different signal intensity values will reconstruct a 2D cross-sectional grayscale image of the scanned structure (B-scan). After processing the raw data, B-scans showed areas

with different gray shades. Some areas were showing high signal intensity in the form of bright pixels, while other areas were showing low signal intensities in the form of dark pixels. The representative B-scan, surface topography, and surface reflectivity of negative control (**Fig. 1**), ESTP (**Fig. 2**), TNPsESTP (**Fig. 3**) and Biorepair positive control (**Fig. 4** [I and II]) groups showed a marked increase in surface reflectivity of dentin with increasing time of paste application. The collective MPV value for all groups at 2 weeks and 1 month is shown in **Fig. 4** (III). As seen, at 2 weeks, the MPV follows this order: TNPsESTP (191) > ESTP (187) > negative control (174) > Biorepair (170). At 1 month, the MPV follows this order: ESTP (221) > TNPsESTP = Biorepair (204) > negative control (174). The MPV for all treated groups was higher at 1 month compared with 2 weeks.

Scanning Electron Microscopy

Fig. 5 shows the SEM images of etched dentin. As seen all dentinal tubules were patent with an average diameter of 2.8 \pm 0.9 μm . After brushing with the ESTP, the occlusion of dentinal tubules was observed. As a result, a reduction in diameter of dentinal tubules occurred (**Table 2**). For all treated groups, a complete occlusion of dentinal tubules started at 2 weeks and increased at 1 month. Therefore, it was difficult to count the number of completely occluded tubules at 1 month. The number of completely closed dentinal tubules in an area of 125 \times 90 μm^2 followed this order Biorepair > ESTP > TNPsESTP. At 2 weeks, only TNPsESTP showed significantly lower number than Biorepair. A reverse order was observed regarding the number of opened or partially closed dentinal tubules where TNPsESTP > ESTP > Biorepair.

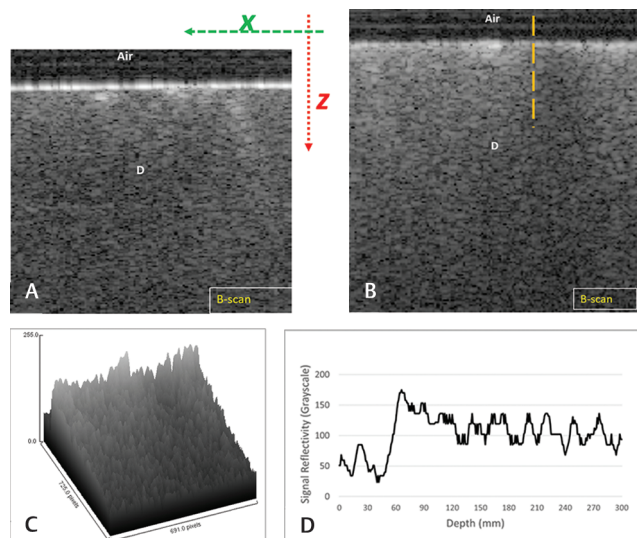


Fig. 1 Etched dentin (negative control) group: Representative B-scan shows the gradual decrease in the signal intensity on Z-axis (A). Typical OCT image (B) and its analysis (C,D) showed the presence of a band of bright pixels along the surface; the broken line representing A-scan. The surface plot (C) showed the presence of several high peaks of bright pixels at the dentin surface with gradual decrease at deeper level. The plot profile of A-scan (D) shows the MPV at outer surface. D, dentin; MPV, maximum pixel value; OCT, optical coherence tomography.

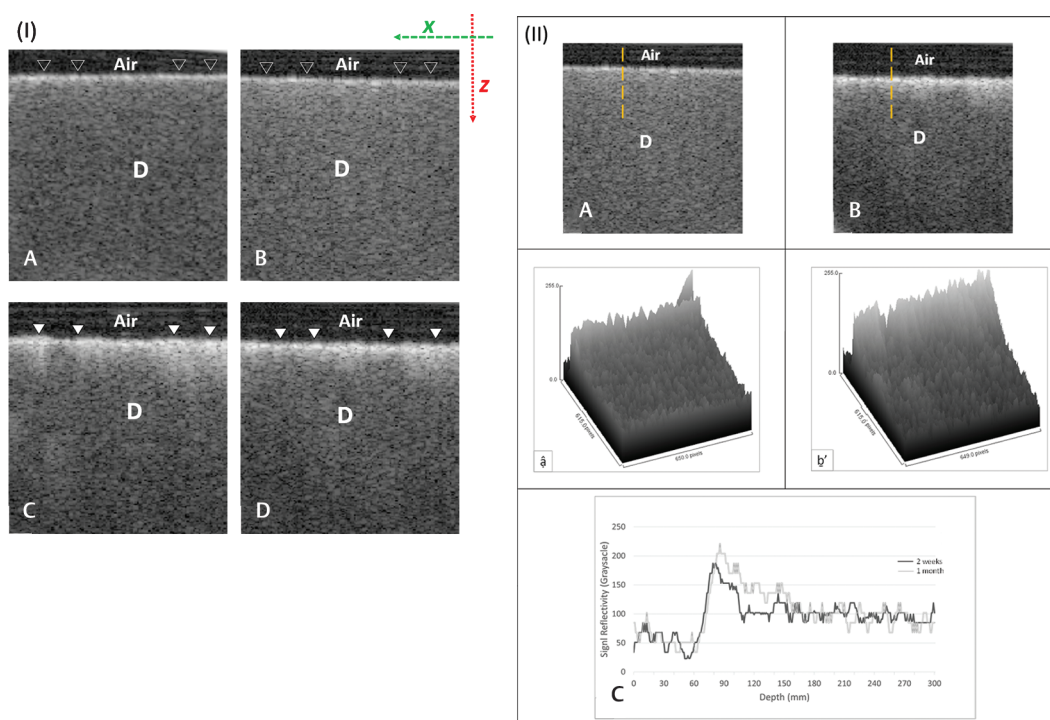


Fig. 2 ESTP group: (I) Representative B-scans after 2 weeks (A, B) and 1 month (C, D). Constant application of ESTP for 1 month has markedly increased the surface reflectivity of the dentin as indicated by the solid white triangles in comparison to the same area indicated by hollow triangles. (II) Representative OCT scans and their signals analyses after 2 weeks (a, a') and 1 month (b, b'); the vertical broken lines represent A-scan. As seen, an intense backscattered reflection was observed after 1 month (b) in comparison to the light bright band of pixels seen after 2 weeks (A). The presented surface plots (a, b'), correspond to the OCT scans in (a) and (b), respectively, showed modifications in the surface density of dentin as indicated by the variation in grayscale peaks. The signal reflectivity at the outer dentin surface after 1 month was greater than 2 weeks (c). D, dentin; ESTP, eggshell toothpaste; OCT, optical coherence tomography.

Table 2 Mean \pm SD of the diameter and number of dentinal tubules in an area of $125 \times 90 \mu\text{m}^2$ for each group after 2 weeks and 1 month

Sample	Diameter of dentinal tubules (μm)					
	2 wk (*)/(¥)			1 mo (*)/(¥)		
ED	2.8 \pm 0.9					
ESTP	1.3 \pm 0.4 (0.02)/(0.16)			1.7 \pm 0.5 (0.07)/(0.03)		
TNPseSTP	1.5 \pm 0.3 (0.03)/(0.03)			1.5 \pm 1.0 (0.1)/(0.24)		
Biorepaire	0.9 \pm 0.3 (0.007)			0.8 \pm 0.4 (0.006)		
Number of dentinal tubules in area of $125 \times 90 \mu\text{m}^2$						
Sample	2 wk			1 mo		
	ODT (*)/(¥)	PCDT (*)/(¥)	CCDT (*)/(¥)	ODT (*)/(¥)	PCDT (*)/(¥)	CCDT (*)/(¥)
ED	198 \pm 2	–	–	198 \pm 2	–	–
ESTP	43 \pm 1 (0.0001)/(0.001)	90 \pm 15/(0.38)	45 \pm 11/(0.18)	4 \pm 1 (0.0001)/(0.20)	105 \pm 15/(0.009)	^a
TNPseSTP	106 \pm 6 (0.0001)/(0.0001)	191 \pm 8/(0.003)	13 \pm 1/(0.03)	42 \pm 4 (0.0001)/(0.0001)	152 \pm 7/(0.0001)	^a
Biorepaire	15 \pm 10 (0.0001)	64 \pm 54	85 \pm 52	3 \pm 1 (0.0001)	74 \pm 7	^a

Abbreviations: CCDT, completely closed dentinal tubules; ESTP, eggshell toothpaste; ODT, opened dentinal tubules, PCDT, partially closed dentinal tubules; SD, standard deviation; TNPseSTP, titanium dioxide nanoparticles eggshell toothpaste.

Note: Both (*) and (¥) represent the *t*-tailed *p*-value when negative (etched dentin) and positive control used, respectively.

^aDifficult to count the number of dentinal tubules.

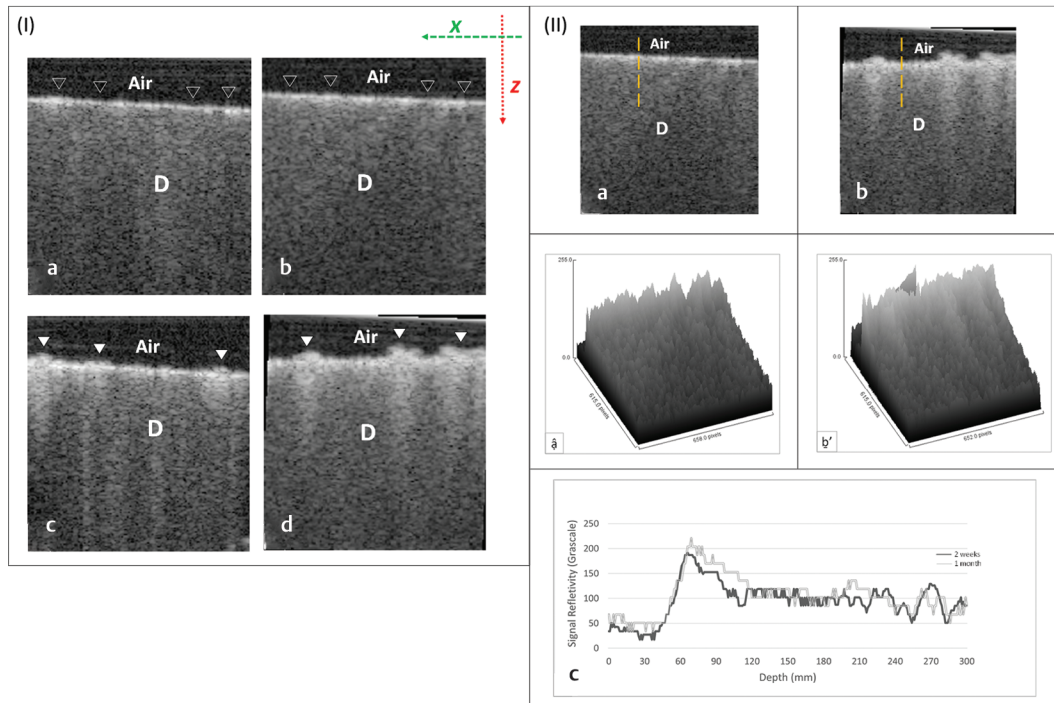


Fig. 3 TNPseSTP group: (I) Typical B-scans after 2 weeks (a, b) and 1 month (c, d). The signal reflectivity from the dentin surface along Z-axis increased after 1 month (solid white triangles) compared with 2 weeks (hollow triangles); this was also associated with a change in surface topography. (II) Representative OCT scans and their signals analyses after 2 weeks (a, a') and 1 month (b, b'); the vertical broken lines represent A-scan. As seen, an intense backscattered reflection was observed after 1 month (b) in comparison to the light bright band of pixels seen after 2 weeks (a). The presented surface plots (a', b'), corresponding to the OCT scans in (a) and (b), respectively, showed an increase in surface density as indicated by the difference in grayscale peaks. The signal reflectivity at the outer dentin surface after 1 month was greater than 2 weeks (c). D, dentin; OCT, optical coherence tomography; TNPseSTP, titanium dioxide nanoparticles eggshell toothpaste.

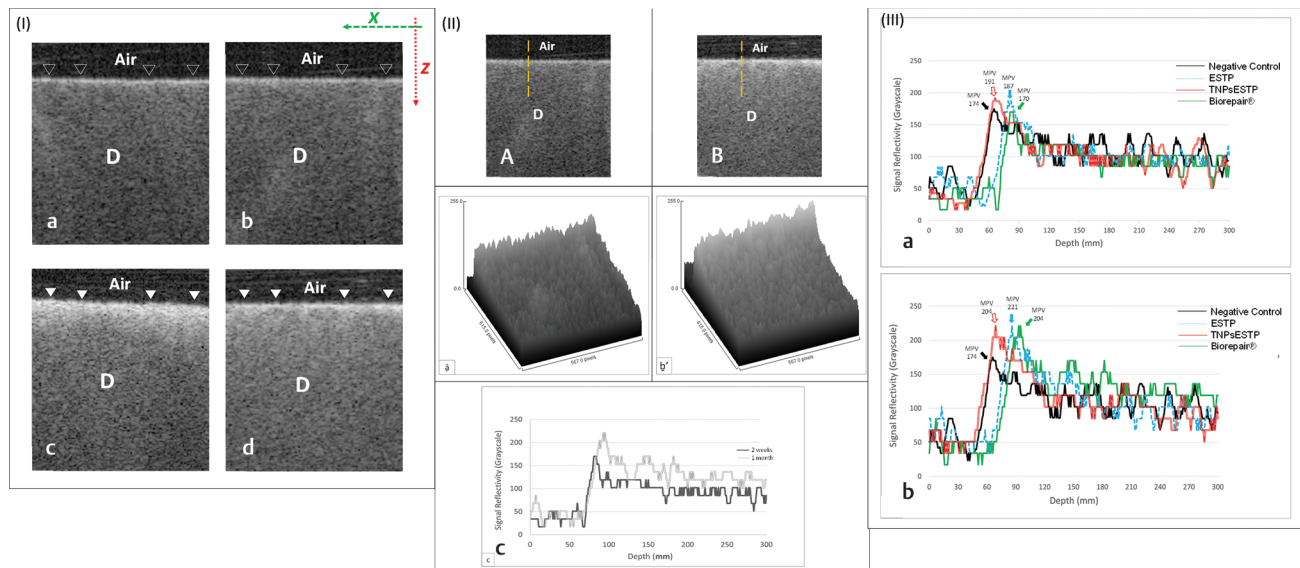


Fig. 4 Biorepair (positive control) group: (I) Representative B-scans for 2 weeks (a, b) and 1 month (c, d). A marked increase in surface reflectivity of dentin (solid white triangles) along Z-axis was observed in comparison to the same area indicated by hollow triangles. (II) Representative OCT scans and their signals analyses after 2 weeks (a, a') and 1 month (b, b'); the vertical broken lines represent A-scan. After 2 weeks, a light bright band of pixels was seen along the surface in comparison to the intense backscattered reflection after 1 month. The presented surface plots (a', b'), corresponding to the OCT scans in (a) and (b), respectively, showed an increase in surface density as indicated by the difference in grayscale peaks. The signal reflectivity at the outer dentin surface after 1 month was greater than 2 weeks (c). (III) Representative plot of signals for different groups after 2 weeks (a) and 1 month (b) acquired by A-scan measurement of MPV. D, dentin; MPV, maximum pixel value; OCT, optical coherence tomography.

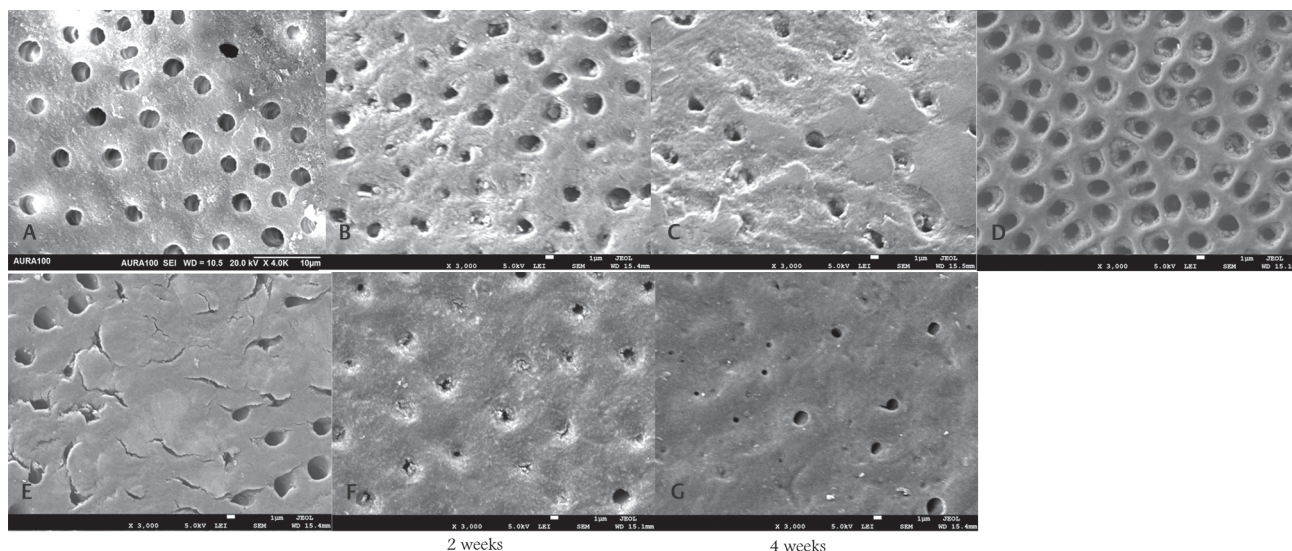


Fig. 5 Scanning electron microscopy images of etched dentin (A), etched dentin after treatment with ESTP (B, C), TNPsESTP (D, E), and Biorepair (F, G) for 2 weeks and 1 month. ESTP, eggshell toothpaste; TNPsESTP, titanium dioxide nanoparticles eggshell toothpaste.

Both ESTP and TNPsESTP showed significantly higher number of partially closed dentinal tubules at 4 weeks than Biorepair.

Discussion

This study investigated the remineralizing potential of the experimental eggshell-based toothpastes in comparison to etched dentin as a negative control and Biorepair as a positive control.

The CP-OCT system, based on near-infrared imaging, scans the substrates in a noninvasive mode. Changes in the mineral content of dental tissues is usually associated with some surface changes that will be perceived as light scattering on CP-OCT grayscale. Each pixel in a grayscale image has a solitary value conveying only intensity information. The gray shades on an image ranges from black (i.e., zero intensity) to white (i.e., maximum intensity of 255). Unlike swept-source OCT, CP-OCT contains a second polarizer that eliminates the “specular reflection” that forms over the imaged flat surfaces. CP-OCT had been therefore successfully used to investigate the changes in dental tissues.^{21,23} When the light is emitted from the OCT, it will pass through the air into dentin surface. As the refractive index (RI) of air is 1, the light passes through the air without any scattering or reflection. Due to the increase in RI of dentin (1.4–1.6),²⁴ the speed of light will decrease when it reaches the dentin surface. Thus, on the OCT grayscale, the air appears as dark pixels, while any change in dentin surface appears as dark and bright pixels. Furthermore, with any increase in substrate density, the OCT light will undergo reflection and/or refraction. Therefore, the MPV was used to detect the changes in dentin surface.^{25–27}

In this study, etching with 37% phosphoric acid for 60 seconds was used to simulate the hypersensitive dentin containing opened dentinal tubules. Toothpastes were applied to etched dentin using a toothbrush simulator with controlled movement and force application. The tooth brushing was carried out using classic soft brushes to simulate

the clinical situation of DH where soft brushes are recommended.²⁸ Circular motion was chosen for brushing as an effective way of removing dental plaque and maintaining gingival health.²⁹ The number of brushing cycles was calculated assuming the ideal scenario for routine tooth brushing (three times/day and each time takes approximately 3 minutes) and the number of teeth is 28. According to this assumption, each tooth is subjected to 20 seconds of brushing/day which is nearly double that used in other studies.^{30,31} This difference could be related to the difference in number and time of brushing per day.^{30,31} Finally, the brushing time was then converted into brushing cycles after considering the time taken for each brushing cycle under the used testing setting. The tooth brushing was carried out for 2 weeks and 1 month; the effect of acid or temperature challenge will be considered in future work. The efficacy of the experimental toothpastes was studied by their ability to block dentinal tubules and remineralize the intertubular dentin.

As observed the experimental toothpastes showed comparable results to Biorepair. This could be related to the release of calcium, phosphorus, and fluoride ions that are essential for remineralization. With TNPsESTP, the presence of TNPs could also have accounted for dentinal tubules' occlusion. The results of this study are in agreement with those obtained by Onwubu et al.^{32–34} In one of Onwubu et al's studies,³² a slurry of both ESP with or without TNPs was used. The slurry was prepared by mixing 1g of powder with 40 mL of deionized water. In the present study, however, other ingredients as shown earlier were included in the paste and the slurry was prepared at powder:liquid ratio of 1:3 to produce a paste with a consistency similar to the regular toothpaste. The samples in Onwubu et al's study were shaken for 3 hours in the presence of eggshell slurry, then they were subjected to 2 wt% citric acid challenge for 5 minutes. In the present study, however, brushing of etched dentin with the eggshell paste was attempted using the toothbrush simulator to mimic the clinical application of the proposed paste.

The use of acid challenge however will be considered in the future work to check the stability of tubules occlusion due to paste applications. In another study by Onwubu et al,³³ the slurry was prepared at a ratio of 100 mg of ESP to 200 µL of deionized water and tooth brushing was carried out using a battery-powered toothbrush twice/daily for 7days, 1 minute each time; the samples were kept in saliva in-between brushing. Regardless of this short time period, a significant reduction in number of opened dentinal tubules was observed with the eggshell paste when compared with the commercially available Sensodyne Repair & Protect and Colgate Pro-Relief toothpastes. Furthermore, in Onwubu et al's studies, bovine incisors were used; however, in the present study, human extracted molar teeth were used.³²⁻³⁴

With Biorepair, the active ingredient, responsible for occlusion of dentinal tubule and dentin remineralization, is nanohydroxyapatite. The presence of hydroxyapatite in a nanoscale enhances its rapid dissolution and hence early occlusion of dentinal tubules.³⁵ Furthermore, these nanocrystals are similar in morphology and structure to tooth apatite.³⁶ The released ions could act as a template for crystal growth and mineralization, and this could explain the increase in number of occluded dentinal tubules with time. According to the results of the present study, there was no strong evidence to reject the null hypothesis.

Conclusion

Under the limitation of the present study, the experimental toothpastes were effective in the occlusion of dentinal tubules and remineralizing of intertubular dentin. They also showed comparable results to Biorepair Fast Sensitive Repair. Therefore, they could be potentially used as a cost-effective treatment for DH.

Conflict of Interest

None declared.

References

- Liu X-X, Tenenbaum HC, Wilder RS, Quock R, Hewlett ER, Ren Y-F. Pathogenesis, diagnosis and management of dentin hypersensitivity: an evidence-based overview for dental practitioners. *BMC Oral Health* 2020;20(1):220
- Arrais CAG, Chan DCN, Giannini M. Effects of desensitizing agents on dentinal tubule occlusion. *J Appl Oral Sci* 2004;12(2):144-148
- da Cruz LPD, Hill RG, Chen X, Gillam DG. Dentine Tubule occlusion by novel bioactive glass-based toothpastes. *Int J Dent* 2018;2018:5701638. Doi:10.1155/2018/5701638
- Miglani S, Aggarwal V, Ahuja B. Dentin hypersensitivity: recent trends in management. *J Conserv Dent* 2010;13(4):218-224
- Mathew MG, Soni AJ, Khan MM, Kausar A, Charan VSS, Akula SK. Efficacy of remineralizing agents to occlude dentinal tubules in primary teeth subjected to dentin hypersensitivity in vitro: SEM study. *J Family Med Prim Care* 2020;9(1):354-358
- Tschope P, Zandim DL, Martus P, Kielbassa AM. Enamel and dentine remineralization by nano-hydroxyapatite toothpastes. *J Dent* 2011;39(6):430-437
- Kumar VL, Itthagarun A, King NM. The effect of casein phosphopeptide-amorphous calcium phosphate on

- remineralization of artificial caries-like lesions: an in vitro study. *Aust Dent J* 2008;53(1):34-40
- Jena A, Kala S, Shashirekha G. Comparing the effectiveness of four desensitizing toothpastes on dentinal tubule occlusion: a scanning electron microscope analysis. *J Conserv Dent* 2017;20(4):269-272
- Rovenský J, Stancíková M, Masaryk P, Svík K, Istok R. Eggshell calcium in the prevention and treatment of osteoporosis. *Int J Clin Pharmacol Res* 2003;23(2-3):83-92
- Schaafsma A, van Doormaal JJ, Muskiet FA, Hofstede GJ, Pakan I, van der Veer E. Positive effects of a chicken eggshell powder-enriched vitamin-mineral supplement on femoral neck bone mineral density in healthy late post-menopausal Dutch women. *Br J Nutr* 2002;87(3):267-275
- Identification of inorganic compounds in eggshell as a dental remineralization material. *J Dentomaxillofacial Sci* 2017;2(3):168-171
- Haghighi R, Mehran M, Ahmadvand M, Ahmadvand MJ. Remineralization effect of eggshell versus nano-hydroxyapatite on caries-like lesions in permanent teeth (in vitro). *J Int Oral Health* 2016;8(4):435-439 doi:10.2047/jioh-08-04-05
- Schaafsma A, Pakan I. Short-term effects of a chicken egg shell powder enriched dairy-based products on bone mineral density in persons with osteoporosis or osteopenia. *Bratisl Lek Listy* 1999;100(12):651-656
- Krompecher I. Antirachitic and anti-anemic effects of eggshell [in Hungarian]. *Gyermekgyógyászat* 1959;10(2):42-50
- Salah M, Kataia MM, Kataia EM, El Din EA, Essa ME. Evaluation of eggshell powder as an experimental direct pulp capping material. *Future Dent J* 2018;4(2):160-164
- Mony B, Ebenezar AVR, Ghani MF, Narayanan A, S A, Mohan AG. Effect of chicken egg shell powder solution on early enamel carious lesions: an in vitro preliminary study. *J Clin Diagn Res* 2015;9(3):ZC30-ZC32
- Buzala MAR, Kobayashi CAN. Sources of fluoride intake and risk of dental fluorosis. *Actual Osteol* 2007;3(1):13-24
- Azizi-Lalabadi M, Ehsani A, Divband B, Alizadeh-Sani M. Antimicrobial activity of titanium dioxide and zinc oxide nanoparticles supported in 4A zeolite and evaluation the morphological characteristic. *Sci Rep* 2019;9(1):17439
- Park I-S. Anaesthetic efficacy and physiological response of clove oil and lidocaine-HCl on river puffer, *Takifugu obscurus* and tiger puffer, *T. rubripes*. *Dev Reprod* 2019;23(1):21-34
- Marya CM, Satija G, J A, Nagpal R, Kapoor R, Ahmad A. *In vitro* inhibitory effect of clove essential oil and its two active principles on tooth decalcification by apple juice. *Int J Dent* 2012;2012:759618
- Bakhsh TA, Al-Jeffery B, Zaatari G, et al. Evaluation of the adaptation of dental polymers using cross-polarization optical coherence tomography. *Biomed Phys Eng Express* 2019;5(2):025014
- Turkistani A, Almutairi M, Banakhar N, et al. Optical evaluation of enamel microleakage with one-step self-etch adhesives. *Photomed Laser Surg* 2018;36(11):589-594
- Chan KH, Tom H, Lee RC, et al. Clinical monitoring of smooth surface enamel lesions using CP-OCT during nonsurgical intervention. *Lasers Surg Med* 2016;48(10):915-923
- Hariri I, Sadr A, Nakashima S, Shimada Y, Tagami J, Sumi Y. Estimation of the enamel and dentin mineral content from the refractive index. *Caries Res* 2013;47(1):18-26
- Lenton P, Rudney J, Fok A, Jones RS. Clinical cross-polarization optical coherence tomography assessment of subsurface enamel below dental resin composite restorations. *J Med Imaging (Bellingham)* 2014;1(1):016001
- Nee A, Chan K, Kang H, Staninec M, Darling CL, Fried D. Longitudinal monitoring of demineralization peripheral to orthodontic brackets using cross polarization optical coherence tomography. *J Dent* 2014;42(5):547-555

- 27 Rasmussen K, Reilly C, Li Y, Jones RS. Real-time imaging of anti-biofilm effects using CP-OCT. *Biotechnol Bioeng* 2016;113(1):198–205
- 28 Sehmi H, Olley RC. The effect of toothbrush abrasion force on dentine hypersensitivity in-vitro. *J Dent* 2015;43(12):1442–1447
- 29 Hapsari I, Hunsrisakhun J. Comparison of modified circular and natural toothbrushing methods in effectiveness of dental plaque removal and gingival improvement. *J Int Oral Health* 2020;12(1):20–26
- 30 Creeth JE, Gallagher A, Sowinski J, et al. The effect of brushing time and dentifrice on dental plaque removal in vivo. *J Dent Hyg* 2009;83(3):111–116
- 31 Bizhang M, Schmidt I, Chun YP, Arnold WH, Zimmer S. Toothbrush abrasivity in a long-term simulation on human dentin depends on brushing mode and bristle arrangement. *PLoS One* 2017;12(2):e0172060
- 32 Onwubu SC, Mdluli PS, Singh S, Tlapana T. A novel application of nano eggshell/titanium dioxide composite on occluding dentine tubules: an *in vitro* study. *Braz Oral Res* 2019;33(e16):e016
- 33 Onwubu SC, Mdluli PS, Singh S, Bharuth V, Makgobole MU. Evaluation of the occluding characteristics of nano-sized eggshell/titanium dioxide with or without saliva. *Eur J Dent* 2019;13(4):547–555
- 34 Onwubu SC, Mdluli PS, Singh S, Bharuth V. Remineralization potential of a modified eggshell-titanium composite-scanning electron microscope study. *Eur J Dent* 2019;13(2):187–192
- 35 Bologa E, Stoleriu S, Iovan G, Ghiorghe CA, Nica I, Andrian S, Amza OE. Effects of dentifrices containing nanohydroxyapatite on dentinal tubule occlusion—a scanning electron microscopy and EDX study. *Appl Sci (Basel)* 2020;10:6513
- 36 Scribante A, Dermenaki Farahani MR, Marino G, et al. Biomimetic effect of nano-hydroxyapatite in demineralized enamel before orthodontic bonding of brackets and attachments: visual, adhesion strength, and hardness in *in vitro* tests. *BioMed Res Int* 2020;2020:6747498