

Calvarial Reconstruction

Arvind Badhey, MD¹ Sameep Kadakia, MD² Moustafa Mourad, MD² Jared Inman, MD³
Yadranko Ducic, MD²

¹Department of Otolaryngology, New York Eye and Ear Infirmary of Mount Sinai, New York

²Otolaryngology and Facial Plastic Surgery Associates, Fort Worth, Texas

³Department of Otolaryngology, Loma Linda University, Loma Linda, California

Address for correspondence Yadranko Ducic, MD, Otolaryngology and Facial Plastic Surgery Associates, 923 Pennsylvania Ave, Fort Worth, TX 76104 (e-mail: yducic@sbcglobal.net).

Semin Plast Surg 2017;31:222–226.

Abstract

Keywords

- ▶ calvarium reconstruction
- ▶ cranioplasty
- ▶ hydroxyapatite
- ▶ autologous cranioplasty
- ▶ methyl methacrylate
- ▶ synthetic cranioplasty

Calvarial reconstruction is a challenge to reconstructive surgeons, especially considering protection of intracranial contents. In recent years, the advent of multiple reconstructive materials adds tools to the surgical armamentarium. Options include autologous split calvarial and rib grafts and alloplastic materials such as titanium mesh, methyl methacrylate, calcium hydroxyapatite, and polyetheretherketone. The most important aspect of cranial reconstruction still lies in finding the most aesthetic, safe, and reliable means of filling a defect.

Approaching the reconstruction of calvarial defects requires multiple rungs from the reconstructive ladder. In turn, each case is uniquely challenging for the reconstructive surgeon. The simplest approach requires a foundational knowledge of the tools within the reconstructive arsenal and openness to innovation. Any bony defect, in this case calvarium, adds complexity to reconstruction by dealing with structural support, contour, and function.¹ The advancement of calvarium reconstructive ranges from well-known surgical techniques, molded materials, and sculpted implants.^{2–6} All of which have gone through multiple iterations as science catches up to practice. Thus, there has yet to be a clear consensus on what option is best.^{7,8}

The typical reconstructive focus encompasses cosmesis and support. In calvarial reconstruction added aspects of protecting craniodural structures, recreation of normal CSF pressure and blood flow, and donor-site morbidity complicate preoperative planning.⁹

In this review, we will discuss the current scientific and clinical progress of calvarial reconstruction. This article aims to present the typical management considerations, the newest innovative materials, and the specialized operative techniques used today.

Preoperative Planning

Two tenets guide calvarial reconstruction: re-establishing contour and protecting cranial contents. To begin this process, a fundamental knowledge of calvaria anatomy and the etiology of defects are important. The calvaria consist of three layers: an outer table of cortical bone, diploic medullary space of cancellous bone, and an inner table of thinner cortical bone. The overlying soft tissues of the scalp consist of five layers: skin (contains hair follicles and sebaceous glands), subcutaneous tissue (contains the scalp vasculature), galea aponeurosis (dense fibrous layer contiguous with the fascia of the frontalis muscle and the temporo-occipital fascia), loose areolar tissue (layer which allows superficial layers to shift relative to the pericranium), and the pericranium (the periosteum blood supplying layer of the cranial bones).¹⁰ ▶ **Fig. 1** is an illustration of the anatomy previously described. Defects within each of these layers can result in various forms of trauma, tumor resection, or osteoradionecrosis.^{11,12}

In addition, a surgeon must be aware and attempt to best manage medical comorbidities. A smoking history, uncontrolled diabetes, and local infections are some aspects that significantly affect wound healing and in turn successful reconstruction.¹³

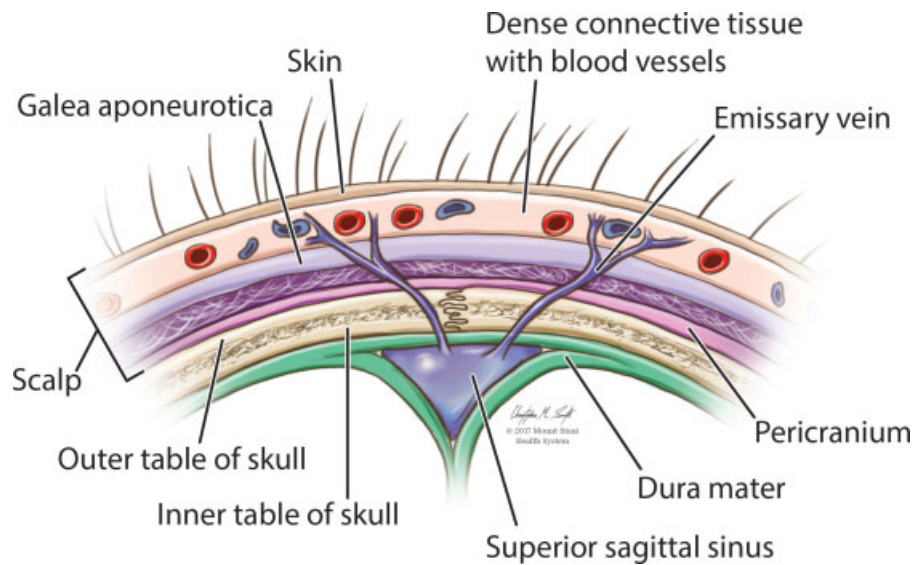


Fig. 1 Anatomical illustration of the scalp and calvarium (Artwork courtesy of Christopher M. Smith from the Mount Sinai Health System).

Importantly, recreating the separation between cranial contents and external elements has been shown to improve neurologic outcomes and aid in cerebral flow and CSF hemodynamics.^{14,15}

Finally, without adequate reconstruction patients can suffer from a host of significant complications, psychologic distress, headaches, dizziness, and fatigue.¹⁶

Materials

Calvarial reconstruction dates back hundreds of years, with materials ranging from precious metals and cork to coral and coconuts.^{17–19} Modern options range from autografts to computer mapped implantables, each of which must be tailored to the specific patient. The ideal material can protect intracranial contents has good contour, is malleable, lightweight, and can be easily integrated into native bone. It must also be resistant to infection, prevent a robust inflammatory response, be isothermic and not conduct heat, and not be prone to biologic breakdown.²⁰

Autologous Bone

Autologous bone is an autograft that works best by integrating into the native bone with high potential for growth. This portends to a lower chance of graft loss because infected bone can be salvaged with debridement. Although history has shown multiple harvest sites, including iliac crest and tibia, the modern harvest sites include calvarial bone and split-rib grafts.²¹

Use of the external table of the cranium with its overlying periosteum was described as early as 1900, and as time has passed, it has remained relevant as an effective means of reconstruction in the modern era.^{21–23} A calvarial graft is the most natural material for reconstruction. It can easily be harvested from the local field—commonly from the parietal skull laterally, where bone is the thickest and a safe distance

from the sagittal sinus. A fresh autologous graft provides the ideal structural and histocompatibility properties for osteointegration with a low incidence of infections.²⁴ The main risks associated with calvarial grafts to consider are limited size due to the original defect and risk of violating the inner table or dura during harvest.

The use of split-rib grafts was also introduced in the early 1900s.²⁵ It can be effective for larger defects, and for cosmetically obvious areas such as a frontal defect. During harvest, removing more than two adjacent ribs can cause chest wall instability; alternating ribs can minimize this risk and contour deformities. Dissection is performed subperiosteally to protect the underlying pleura. Grafts are then bent and placed in a plank fashion within the defect, with gaps filled with bone chips or paste.¹³ Concerns raised regarding split-rib grafts include bone movement—solved by rigid fixation with screws and plates—and long-term irregular contour. In the senior author's experience, split-rib is most commonly used and effective in pediatric patients. In addition, it has been found that iliac bone is reliable, with favorable curvature, and good long-term results.

All types of autologous grafts run the risk of bone reabsorption, infection, donor-site morbidity and at times poor cosmesis. Interestingly, recent advances in harvesting calvarium from tissue-expander hyperostosis provide a viable alternative to generating bone graft without major donor-site morbidity.^{26,27} Ultimately, if these risks can be avoided, autologous bone meets all the requirements of an ideal reconstructive tool.

Allografts and Xenografts

Initial calvarial reconstruction included animal and cadaveric tissue. Although canine bones and animal horns were common place for the time, the improved outcomes of autografts and bone substitutes made these types of reconstructions obsolete.^{28,29} Similarly, cadaveric cartilage fell out of favor as it was found to insufficiently calcify.³⁰

Synthetics

As defect size places limits on the usable autologous bone, room is made for synthetic bone substitutes. These materials have become popular as they prevent donor-site morbidity, maintain strength over time without reabsorption, and are malleable enough to be contoured.³¹

Multiple materials have come in and out of favor, with none established as superior. The most common include titanium mesh, methyl methacrylate (MMA), hydroxyapatite, and polyetheretherketone (PEEK)—each with advantages and disadvantages.

Titanium Mesh

Titanium mesh has multiple uses, either as a long scaffold for reconstruction or as a framework with other materials creating a smooth fused implant. Titanium, is a noncorrosive metal, with limited inflammatory reaction and a minimal risk of infection.^{32–34} It also has the added benefit of covering large defects, with similar contouring preoperatively.³⁵ The use of mesh plates has drastically increased with the advent of three-dimensional computed tomography (3D CT) prefabricated implants. Using customized implants crafted with light-sensitive resin and CT data, stereolithographic models with multiple synthetic bases can be made.^{14,36} ▶ **Figs. 2 and 3** show an illustration of a calvarial defect followed by reconstruction with a smooth titanium amalgam plate.

Though these customized implants can be fairly costly, patients have reported high satisfaction with both cosmetic results and quality of life in a long-term follow-up study.³⁷ In addition, titanium mesh is a thermoconductor and depending on mixed metal concentrations can cause scatter artifacts on routine imaging. Finally, over years of implantation, the overlying skin can be thinned with eventual exposure of the mesh.³⁸

Methyl Methacrylate

Methyl methacrylate (MMA) is a synthetic polymer of acrylic acid, able to handle levels of stress similar to that of native bone.

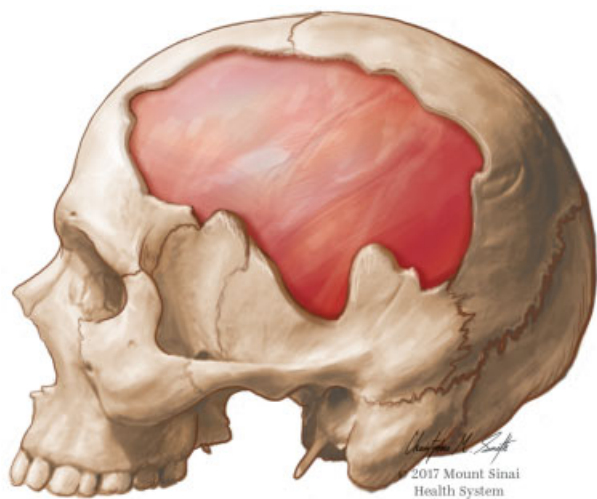


Fig. 2 Postsurgical defect in the calvarium showing underlying exposed dura and brain (Artwork courtesy of Christopher M. Smith from the Mount Sinai Health System).

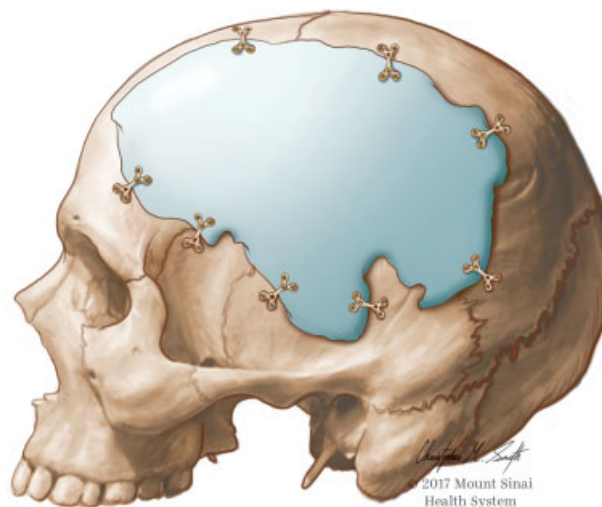


Fig. 3 Reconstruction of the calvarial defect from ▶ **Fig. 2** with a smooth titanium amalgam (Artwork courtesy of Christopher M. Smith from the Mount Sinai Health System).

When mixed, it starts as a malleable paste, which when cooled evenly shapes to fit a defect.³⁹ It is a stable inert substance with minimal local reaction to the meninges.⁴⁰ More recently, it has been typically combined with titanium mesh as a structural lattice—this reduces the risk of fracture of pure MMA.^{41,42}

Methyl methacrylate is a polymeric powder, which when mixed into a paste causes an exothermic reaction. This can cause dangerous burns to local tissues, and during placement, the implant must constantly be irrigated with cool saline. MMA also has a risk of infection in 5% of cases, with an added risk of fracture due to poor native bone ingrowth. The implant itself prevents proper local growth, and is thus commonly avoided in pediatric populations.^{43,44} In an attempt to avoid some of these pitfalls, premade MMA models have become a regular occurrence.⁴⁵

Hydroxyapatite

Hydroxyapatite is a calcium phosphate with a composition similar to mineral phase bone, but can be mass-produced as a ceramic.⁴⁶ Similar to MMA, hydroxyapatite can be combined with titanium mesh to create a fused reconstruction. However, unlike MMA the hardening process is isothermic and it allows for expansion with growing calvarium—with safe use in pediatric patients. With a minimal inflammatory reaction, hydroxyapatite premade prostheses with pores can be constructed to ensure bone ingrowth.²¹ Hydroxyapatite should be avoided from contact with the frontal sinus, placement near a coronal incision, or preceding postoperative radiation, as there is an increased risk of infection.⁴⁷

A disadvantage of hydroxyapatite is a lack of lamellar organization; a low tensile strength implant is prone to fragmenting over time.^{43,48} As a result, it is commonly used for smaller calvarial defects.^{49,50}

Polyetheretherketone

Polyetheretherketone (PEEK) is a chemically inert semicrystalline powder. Implants made of PEEK have strength matching

that of cortical bone.⁵¹ This strength along with seamless 3D printing of customized implants has made PEEK a popular option. Its advantage lies in minimal imaging artifact, being nonmagnetic, lightweight, and an inert nonconductor. Unfortunately, the composition of these implants does not provide fodder for osteointegration.⁵²

Preformed implants

The introduction of 3D CT and its use to create anatomical models revolutionized calvarial reconstruction. Using 3D printing, a patient's natural anatomy can be simply recreated.⁶ Prior to prefabricated modeling, standardized mass produced models were contoured based on the eye and without ideal instruments. The change to patient-specific implants, created molds tailored to promoting normal bony ingrowth and healing.⁵³ It was initially thought that these prefabricated implants were limited by the size of a defect. Yet recent studies have shown effectiveness with large scale plates.⁵⁴ Now multiple commercial leaders are pioneering more advancements in ways of automated construction and simple implant models.

Conclusion

Options for calvarial reconstruction include autologous split calvarial and rib grafts and alloplastic materials such as titanium mesh, MMA, calcium hydroxyapatite, and PEEK. Successful reconstruction of the calvaria and scalp may require multiple "rungs" on the reconstructive ladder. The key to effective calvarial reconstruction is choosing the ideal material for the defect.

Conflict of Interest

None.

Acknowledgment

We would like to thank Christopher Smith from the Mount Sinai Health System for producing high-quality images for this article.

References

- Ioannides C, Fossion E, McGrouther AD. Reconstruction for large defects of the scalp and cranium. *J Craniomaxillofac Surg* 1999;27(03):145–152
- Warren SM, Fong KD, Chen CM, et al. Tools and techniques for craniofacial tissue engineering. *Tissue Eng* 2003;9(02):187–200
- Habal MB, Pietrzak WS. Key points in the fixation of the craniofacial skeleton with absorbable biomaterial. *J Craniofac Surg* 1999;10(06):491–499
- Ono I, Tateshita T, Satou M, Sasaki T, Matsumoto M, Kodama N. Treatment of large complex cranial bone defects by using hydroxyapatite ceramic implants. *Plast Reconstr Surg* 1999;104(02):339–349
- Eppley BL, Kilgo M, Coleman JJ III. Cranial reconstruction with computer-generated hard-tissue replacement patient-matched implants: indications, surgical technique, and long-term follow-up. *Plast Reconstr Surg* 2002;109(03):864–871
- D'Urso PS, Earwaker WJ, Barker TM, et al. Custom cranioplasty using stereolithography and acrylic. *Br J Plast Surg* 2000;53(03):200–204
- Wiggins A, Austerberry R, Morrison D, Ho KM, Honeybul S. Cranioplasty with custom-made titanium plates—14 years experience. *Neurosurgery* 2013;72(02):248–256, discussion 256
- Harris DA, Fong AJ, Buchanan EP, Monson L, Khechoyan D, Lam S. History of synthetic materials in alloplastic cranioplasty. *Neurosurg Focus* 2014;36(04):E20
- Aydin S, Kucukyuruk B, Abuzayed B, Aydin S, Sanus GZ. Cranioplasty: review of materials and techniques. *J Neurosci Rural Pract* 2011;2(02):162–167
- Thomaidis V. *Cutaneous Flaps in Head and Neck Reconstruction. Anatomy to Surgery*. Heidelberg, Germany: Springer; 2014
- Tolhurst DE, Carstens MH, Greco RJ, Hurwitz DJ. The surgical anatomy of the scalp. *Plast Reconstr Surg* 1991;87(04):603–612, discussion 613–614
- Hoffman JF. Management of scalp defects. *Otolaryngol Clin North Am* 2001;34(03):571–582
- Lin SJ, Hanasono MM, Skoracki RJ. Scalp and calvarial reconstruction. *Semin Plast Surg* 2008;22(04):281–293
- Song J, Liu M, Mo X, Du H, Huang H, Xu GZ. Beneficial impact of early cranioplasty in patients with decompressive craniectomy: evidence from transcranial Doppler ultrasonography. *Acta Neurochir (Wien)* 2014;156(01):193–198
- Honeybul S, Janzen C, Kruger K, Ho KM. The impact of cranioplasty on neurological function. *Br J Neurosurg* 2013;27(05):636–641
- Grant FC, Norcross NC. Repair of cranial defects by cranioplasty. *Ann Surg* 1939;110(04):488–512
- Chim H, Schantz JT. New frontiers in calvarial reconstruction: integrating computer-assisted design and tissue engineering in cranioplasty. *Plast Reconstr Surg* 2005;116(06):1726–1741
- Courville CB. Cranioplasty in prehistoric times. *Bull Los Angel Neuro Soc* 1959;24(01):1–8
- Ellis W. *Polynesian Researches*. Vol. III. London: Fisher, Son & Jackson; 1836:34
- Koksal V, Kayaci S, Bedir R. Split rib cranioplasty for frontal osteoma: a case report and review of the literature. *Iran Red Crescent Med J* 2016;18(07):e29541
- Zanotti B, Zingaretti N, Verlicchi A, Robiony M, Alfieri A, Parodi PC. Cranioplasty: review of materials. *J Craniofac Surg* 2016;27(08):2061–2072
- Mueller W. Zur frage der temporaren schadelresektion an stelle der trepanation. *Zentralbl Chir* 1890;17:65
- Backdahl EO, Eriksson GX. Paper presented at: Meeting della Società Scandinava di Chirurgia Plastica. Stockholm, Sweden: 1966
- Artico M, Ferrante L, Pastore FS, et al. Bone autografting of the calvaria and craniofacial skeleton: historical background, surgical results in a series of 15 patients, and review of the literature. *Surg Neurol* 2003;60(01):71–79
- Açikgöz B, Özcan OE, Erbenli A, Bertan V, Ruacan S, Açikgöz HG. Histopathologic and microdensitometric analysis of craniotomy bone flaps preserved between abdominal fat and muscle. *Surg Neurol* 1986;26(06):557–561
- Hadad I, Meara JG, Rogers-Vizena CR. A novel local autologous bone graft donor site after scalp tissue expansion in aplasia cutis congenita. *J Craniofac Surg* 2016;27(04):904–907
- Greene AK, Mulliken JB, Proctor MR, Rogers GF. Pediatric cranioplasty using particulate calvarial bone graft. *Plast Reconstr Surg* 2008;122(02):563–571
- Haeseker B. Van Meekeren and his account of the transplant of bone from a dog into the skull of a soldier. *Plast Reconstr Surg* 1991;88(01):173–174
- Durand JL, Renier D, Marchac D. [The history of cranioplasty]. *Ann Chir Plast Esthet* 1997;42(01):75–83
- Wolf JJ, Walker AE. Cranioplasty: collective review. *Int Abstr Surg* 1945;81:1–23
- Goldstein JA, Paliga JT, Bartlett SP. Cranioplasty: indications and advances. *Curr Opin Otolaryngol Head Neck Surg* 2013;21(04):400–409

- 32 Matsuno A, Tanaka H, Iwamuro H, et al. Analyses of the factors influencing bone graft infection after delayed cranioplasty. *Acta Neurochir (Wien)* 2006;148(05):535–540, discussion 540
- 33 Shah AM, Jung H, Skirboll S. Materials used in cranioplasty: a history and analysis. *Neurosurg Focus* 2014;36(04):E19
- 34 Marbacher S, Andres RH, Fathi AR, Fandino J. Primary reconstruction of open depressed skull fractures with titanium mesh. *J Craniofac Surg* 2008;19(02):490–495
- 35 Eufinger H, Wehmoller M, Wethe S, Machtens E. Individual prefabricated titanium implants for cranioplasty. *Int J Oral Maxillofac Surg* 1999;28:172
- 36 Winder J, Cooke RS, Gray J, Fannin T, Fegan T. Medical rapid prototyping and 3D CT in the manufacture of custom made cranial titanium plates. *J Med Eng Technol* 1999;23(01):26–28
- 37 Cabraja M, Klein M, Lehmann TN. Long-term results following titanium cranioplasty of large skull defects. *Neurosurg Focus* 2009;26(06):E10
- 38 Singh M, Ricci JA, Dunn IF, Caterson EJ. Alloderm covering over titanium cranioplasty may minimize contour deformities in the frontal bone position. *J Craniofac Surg* 2016;27(05):1292–1294
- 39 Marchac D, Greensmith A. Long-term experience with methylmethacrylate cranioplasty in craniofacial surgery. *J Plast Reconstr Aesthet Surg* 2008;61(07):744–752, discussion 753
- 40 Henry HM, Guerrero C, Moody RA. Cerebrospinal fluid fistula from fractured acrylic cranioplasty plate. Case report. *J Neurosurg* 1976;45(02):227–228
- 41 Galicich JH, Hovind KH. Stainless steel mesh-acrylic cranioplasty. Technical note. *J Neurosurg* 1967;27(04):376–378
- 42 Chiarini L, Figurelli S, Pollastri G, et al. Cranioplasty using acrylic material: a new technical procedure. *J Craniomaxillofac Surg* 2004;32(01):5–9
- 43 Rubin JP, Yaremchuk MJ. Complications and toxicities of implantable biomaterials used in facial reconstructive and aesthetic surgery: a comprehensive review of the literature. *Plast Reconstr Surg* 1997;100(05):1336–1353
- 44 Blum KS, Schneider SJ, Rosenthal AD. Methyl methacrylate cranioplasty in children: long-term results. *Pediatr Neurosurg* 1997;26(01):33–35
- 45 Turgut G, Özkaya Ö, Kayali MU. Computer-aided design and manufacture and rapid prototyped polymethylmethacrylate reconstruction. *J Craniofac Surg* 2012;23(03):770–773
- 46 Sanan A, Haines SJ. Repairing holes in the head: a history of cranioplasty. *Neurosurgery* 1997;40(03):588–603
- 47 Verret DJ, Ducic Y, Oxford L, Smith J. Hydroxyapatite cement in craniofacial reconstruction. *Otolaryngol Head Neck Surg* 2005;133(06):897–899
- 48 Frassanito P, De Bonis P, Mattogno PP, et al. The fate of a macroporous hydroxyapatite cranioplasty four years after implantation: macroscopical and microscopical findings in a case of recurrent atypical meningioma. *Clin Neurol Neurosurg* 2013;115(08):1496–1498
- 49 Miyake H, Ohta T, Tanaka H. A new technique for cranioplasty with L-shaped titanium plates and combination ceramic implants composed of hydroxyapatite and tricalcium phosphate (Ceratitis). *Neurosurgery* 2000;46(02):414–418
- 50 Gilardino MS, Cabiling DS, Bartlett SP. Long-term follow-up experience with carbonated calcium phosphate cement (Norian) for cranioplasty in children and adults. *Plast Reconstr Surg* 2009;123(03):983–994
- 51 Lethaus B, Safi Y, ter Laak-Poort M, et al. Cranioplasty with customized titanium and PEEK implants in a mechanical stress model. *J Neurotrauma* 2012;29(06):1077–1083
- 52 Wang JC, Wei L, Xu J, Liu JF, Gui L. Clinical outcome of cranioplasty with high-density porous polyethylene. *J Craniofac Surg* 2012;23(05):1404–1406
- 53 Cooke MN, Fisher JP, Dean D, Rinnac C, Mikos AG. Use of stereolithography to manufacture critical-sized 3D biodegradable scaffolds for bone ingrowth. *J Biomed Mater Res B Appl Biomater* 2003;64(02):65–69
- 54 Dean D, Min KJ, Bond A. Computer aided design of large-format prefabricated cranial plates. *J Craniofac Surg* 2003;14(06):819–832