

A rare case of extramedullary hematopoiesis in the mediastinum diagnosed by endoscopic ultrasound



Fig. 1 Endoscopic ultrasound showing a right-sided peri-esophageal, supra-diaphragmatic lesion in a patient with extramedullary hematopoiesis. Note the hyperechogenic appearance of the lesion.

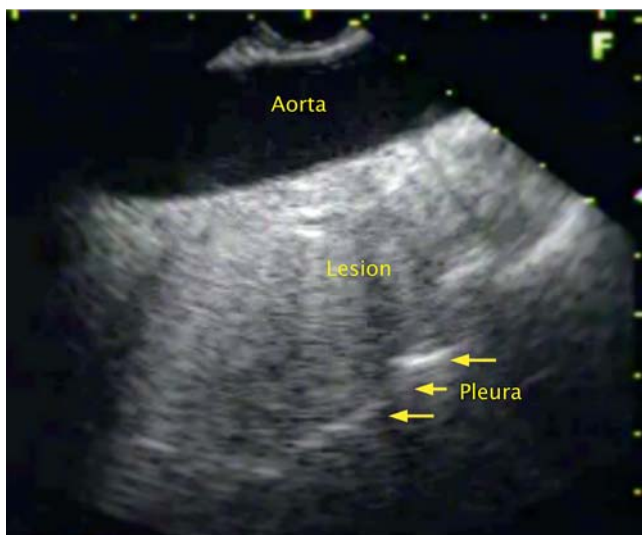


Fig. 2 Endoscopic ultrasound showing a peri-aortic/vertebral lesion. Note the preserved cleavage plane between the lesion and the pleura.



Fig. 3 Endoscopic ultrasound-guided fine-needle aspiration of the right-sided supra-diaphragmatic lesion. FNA, fine-needle aspiration.

A 48-year-old woman with chest pain for the preceding 2 months and a previous history of hereditary spherocytosis was referred for endoscopic ultrasound (EUS) to evaluate mediastinal lymphadenopathy and a heterogeneous mediastinal mass diagnosed by computed tomography (CT). EUS (Fujinon, Saitama City, Japan) showed a hyperechogenic and heterogeneous peri-esophageal, supra-diaphragmatic lesion (● Fig. 1) and a peri-aortic/vertebral lesion (● Fig. 2). EUS also demonstrated multiple lymph nodes in the para-esophageal, subcarinal, and right high paratracheal regions, suggesting a reactive process. The patient underwent EUS-guided fine-needle aspiration (EUS-FNA) of the right supra-diaphragmatic lesion, performed with a 19-gauge needle (Cook Medical, Limerick, Ireland) (● Fig. 3). Analysis of the histologic sections confirmed the diagnosis of extramedullary hematopoiesis in the mediastinum (● Fig. 4).

Extramedullary hematopoiesis, the formation of apparently normal blood cells outside the confines of the bone marrow, is a rare condition that is usually associated with a hematologic disorder. It generally occurs in the postero-inferior mediastinum [1,2], frequently involving the liver, spleen, and lymph nodes. However, the condition may also develop in other sites, such as the thymus, kidneys, retroperitoneum, intrathoracic cavity, pleurae, pericardium, and intracranial cavity. Most cases are associated with a hemoglobinopathy that produces severe, chronic anemia, such as thalassemia, hereditary spherocytosis, or hemolytic anemia, or with leukemia, lymphoma, or a myeloproliferative disorder. The differential diagnosis includes neoplastic, infectious, and hereditary or acquired conditions. Magnetic resonance imaging and CT cannot differentiate benign from malignant disease, so invasive procedures are undertaken (trans-thoracic needle biopsy, mediastinoscopy, and thoracoscopy) to establish the diagnosis [3,4]. Recently, EUS has been used in the staging of lung cancer because material can be obtained from mediastinal lymph nodes with a minimally invasive technique (EUS-FNA) [5–8]. In this article, we report a rare case of extramedullary hematopoiesis in the mediastinum diagnosed by EUS-FNA. The procedure is a highly accurate and useful tool for the assessment of mediastinal pathology and should be used to sample tissue from mediastinal lymph nodes or masses adjacent to the esophagus.

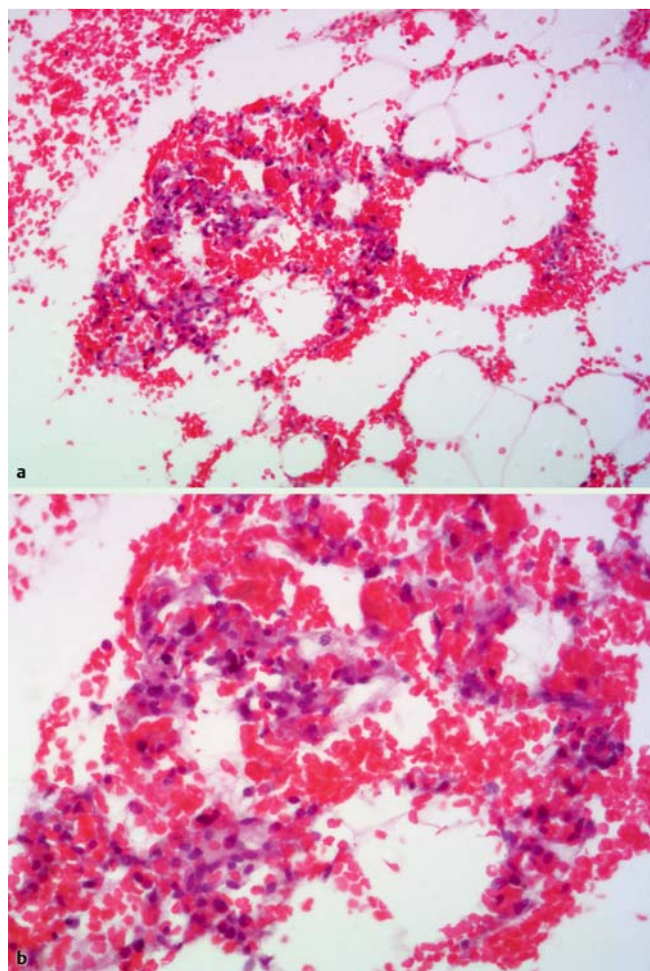


Fig. 4 a,b Histologic sections of the cell block show a proliferation of lymphoid and myeloid cell precursors in blood and adipose tissue, compatible with bone marrow tissue, leading to the diagnosis of extramedullary hematopoiesis.

References

- 1 Policarpio-Nicolas ML, Bregman SG, Ihsan M et al. Mass-forming extramedullary hematopoiesis diagnosed by fine-needle aspiration cytology. *Diagn Cytopathol* 2006; 34: 807–811
- 2 Castelli R, Graziadei G, Karimi M et al. Intrathoracic masses due to extramedullary hematopoiesis. *Am J Med Sci* 2004; 328: 299–303
- 3 Lemaire A, Nikolic I, Petersen T et al. Nine-year single center experience with cervical mediastinoscopy: complications and false negative rate. *Ann Thorac Surg* 2006; 82: 1185–1189, discussion 1189–1190
- 4 Mentzer SJ, Swanson SJ, DeCamp MM et al. Mediastinoscopy, thoracoscopy, and video-assisted thoracic surgery in the diagnosis and staging of lung cancer [review]. *Chest* 1997; 112: 239S–241S
- 5 Buscarini E, De Angelis C, Arcidiacono PG et al. Multicentre retrospective study on endoscopic ultrasound complications. *Dig Liver Dis* 2006; 38: 762–767
- 6 Nguyen TQ, Kalade A, Prasad S et al. Endoscopic ultrasound guided fine needle aspiration (EUS-FNA) of mediastinal lesions. *ANZ J Surg* 2011; 81: 75–78
- 7 Wang KX, Ben QW, Jin ZD et al. Assessment of morbidity and mortality associated with EUS-guided FNA: a systematic review. *Gastrointest Endosc* 2011; 73: 283–290
- 8 Larsen SS, Krasnik M, Vilmann P et al. Endoscopic ultrasound guided biopsy of mediastinal lesions has a major impact on patient management. *Thorax* 2002; 57: 98–103

Bibliography

DOI <http://dx.doi.org/10.1055/s-0034-1391335>
 Endoscopy 2015; 47: E119–E120
 © Georg Thieme Verlag KG
 Stuttgart · New York
 ISSN 0013-726X

Corresponding author

Augusto Carbonari

Santa Casa de São Paulo Hospital
 Department of Endoscopy
 French-Brazilian Centre of Endoscopic Ultrasound (CFBEUS)
 Rua Cesário Mota junior, 112
 São Paulo 01221-020
 Brazil
 Fax: +55-11-21767000
augustocarbonari@gmail.com

Endoscopy_UCTN_Code_CCL_1AF_2AC

Competing interests: None

**Marco Camunha¹, Augusto Carbonari¹,
 Julia Araujo¹, Ivan Rondelli²,
 Mauro Ajaj Saieg², Lucio Rossini¹**

¹ Santa Casa de São Paulo Hospital,
 Department of Endoscopy, and French-
 Brazilian Centre of Endoscopic Ultrasound
 (CFBEUS), São Paulo, Brazil

² Santa Casa de São Paulo Hospital,
 Department of Cytopathology,
 São Paulo, Brazil