

Successful treatment of diffuse esophageal papillomatosis with balloon-assisted radiofrequency ablation in a patient with Goltz syndrome

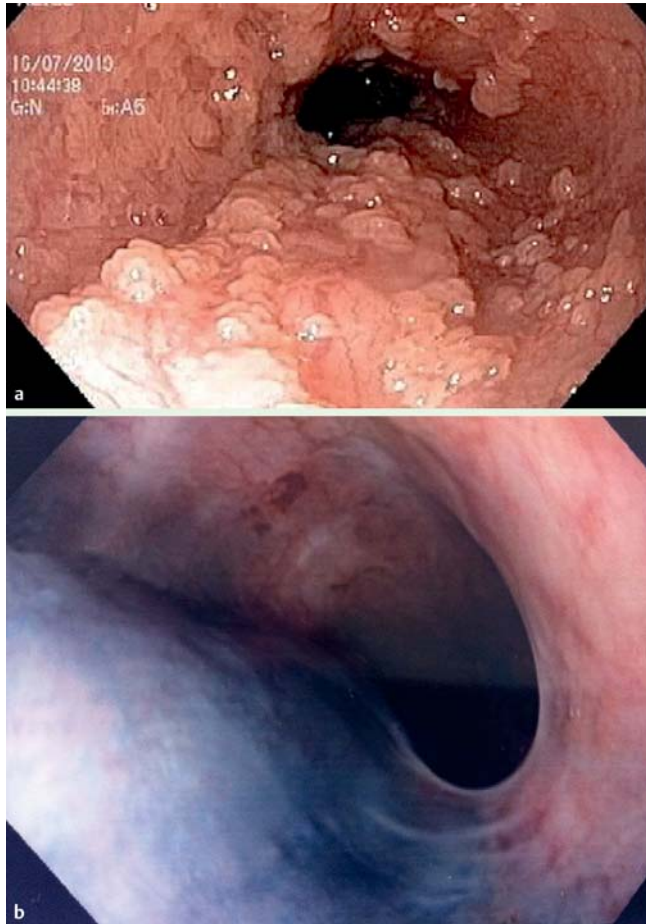


Fig. 1 a EGD showing a 10-cm circumferential area with 4–5 mm finger-like projections in the mid and distal esophagus. b Follow-up endoscopy at 9 months showing complete ablation of the papillomatous tissue within the esophagus.

Goltz syndrome is a rare congenital multi-system connective tissue disease frequently associated with esophageal papillomatosis [1]. Esophageal papillomas are asymptomatic benign epithelial lesions. Their endoscopic incidence has ranged in studies from 0.01% to 0.45% [2–4], while their prevalence, based on autopsy series, has ranged from 0.006% to 0.04%, with a male:female ratio of 3:1 [5,6]. The etiology and pathogenesis of esophageal papillomas is uncertain, but two theories have been proposed: mechanical or mucosal chemical irritation, in addition to the presence of human papillomavirus (HPV). The majority of papillomas are solitary and asymptomatic, although patients with over 10 lesions have been described and large lesions can cause dysphagia [7]. On endoscopy, they appear as small, whitish-pink, wart-like exophytic projections that must be differentiated from

other similar-appearing lesions, such as verrucous squamous cell carcinoma, granulation tissue, and papillary leukoplakia. The management of esophageal papillomatosis has not been clearly defined in the literature. Small isolated lesions have been successfully treated with endoscopic mucosal resection (EMR). The management of multiple and extensive lesions can be more challenging because compli-

Video 1

While performing esophagogastroduodenoscopy (EGD), we identified a 10-cm, circumferential area with 4–5-mm finger-like projections in the mid and distal esophagus. We tattooed the proximal border of the papillomatous tissue and treated the lesions with radiofrequency ablation (RFA). Complete ablation of the papillomatous tissue was obtained with the second and third treatments.

cations of long circumferential EMR have been reported in 2%–88% of cases [8].

A 33-year-old woman with Goltz syndrome was referred to our unit with dysphagia and symptoms of chronic reflux disease. An esophagogastroduodenoscopy (EGD) showed a 10-cm, circumferential area with 4–5-mm finger-like projections in the mid and distal esophagus. Histology was consistent with papillomatosis. We decided to tattoo the proximal border of the papillomatous tissue and to treat the lesions with radiofrequency ablation (Barrx Covidien; GI Solutions, Sunnyvale, California, USA), as has been developed for the treatment of Barrett's esophagus [9,10].

With the first procedure, performed using the 360° catheter, an almost complete ablation of finger-like projections was achieved. The patient underwent a second and third treatment with the Barrx Channel catheter at 12J/cm² and complete ablation of the papillomatosis tissue was obtained (▶ Fig. 1; ▶ Video 1).

Endoscopy_UCTN_Code_TTT_1AO_2AF

Competing interests: None

Helga Bertani¹, Vincenzo Giorgio Mirante¹, Angelo Caruso¹, Mauro Manno¹, Mario Luciano Brancaccio², Rita Conigliaro¹

¹ Endoscopy Unit, Nuovo Ospedale Civile S. Agostino Estense, Modena, Italy

² Endoscopy Unit, Ospedale di Ravenna, Ravenna, Italy

References

- 1 Kashyap P, Sweetser S, Farrugia G. Esophageal papillomas and skin abnormalities. Focal dermal hypoplasia (Goltz syndrome) manifesting with esophageal papillomatosis. *Gastroenterology* 2011; 140: 784
- 2 Sablich R, Benedetti G, Bignucolo S et al. Squamous cell papilloma of the esophagus. Report on 35 endoscopic cases. *Endoscopy* 1988; 20: 5–7
- 3 Szántó I, Szentirmay Z, Banai J et al. [Squamous papilloma of the esophagus. Clinical and pathological observations based on 172 papillomas in 155 patients]. *Orv Hetil* 2005; 146: 547–552
- 4 Mosca S, Manes G, Monaco R et al. Squamous papilloma of the esophagus: long-term follow up. *J Gastroenterol Hepatol* 2001; 16: 857–861
- 5 Adler RH, Carberry DM, Ross CA. Papilloma of the esophagus: association with hiatal hernia. *J Thorac Surg* 1959; 37: 625–635
- 6 Plachta A. Benign tumors of the esophagus. Review of literature and report of 99 cases. *Am J Gastroenterol* 1962; 38: 639–652

- 7 Carr NJ, Monihan JM, Sobin LH. Squamous cell papilloma of the esophagus: a clinico-pathologic and follow-up study of 25 cases. *Am J Gastroenterol* 1994; 89: 245–248
- 8 Conio M, Fisher DA, Blanchi S et al. One-step circumferential endoscopic mucosal cap resection of Barrett's esophagus with early neoplasia. *Clin Res Hepatol Gastroenterol* 2014; 38: 81–91
- 9 Kibria R, Akram S, Moezzi J et al. Esophageal squamous papillomatosis with dysplasia. Is there a role of balloon-based radiofrequency ablation therapy? *Acta Gastroenterol Belg* 2009; 72: 373–376
- 10 Shaheen NJ, Sharma P, Overholt BF et al. Radiofrequency ablation in Barrett's esophagus with dysplasia. *N Engl J Med* 2009; 360: 2277–2288

Bibliography

DOI <http://dx.doi.org/10.1055/s-0034-1377389>
Endoscopy 2014; 46: E404–E405
© Georg Thieme Verlag KG
Stuttgart · New York
ISSN 0013-726X

Corresponding author

Helga Bertani, MD
Endoscopy Unit
Via Giardini 1355
41126 Baggiovara
Modena
Italy
Fax: +39-059-3961216
helga88@libero.it