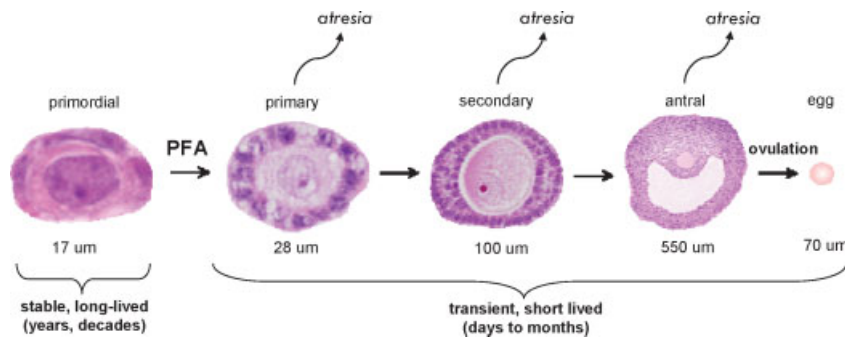


ERRATA

Insights into Primary Ovarian Insufficiency through Genetically Engineered Mouse Models

Shannon D. Sullivan, M.D., Ph.D.,¹ and Diego H. Castrillon, M.D., Ph.D.²

The publisher regrets an error with the picture used for Figure 2 in the above article in *Seminars in Reproductive Medicine*, Volume 29, Number 4, 2011, p. 286. The correct Figure 2 is indicated below.



¹National Institutes of Health, NICHD, Bethesda, Maryland; ²University of Southwestern Medical Center, Dallas, Texas.

Address for correspondence and reprint requests: Diego H. Castrillon, M.D., Ph.D., Associate Professor, Department of Pathology, Room NB6.452, UT Southwestern Medical Center, 6000 Harry Hines Boulevard, Dallas, TX 75390-9072 (e-mail: diego.castrillon@utsouthwestern.edu).

Primary Ovarian Insufficiency; Guest Editor, Lawrence M. Nelson, M.D., CAPT., USPHS

Semin Reprod Med 2011;29:569–570. Copyright © 2011 by Thieme Medical Publishers, Inc., 333 Seventh Avenue, New York, NY 10001, USA. Tel: +1(212) 584-4662.

DOI: <http://dx.doi.org/10.1055/s-0031-1298711>.

ISSN 1526-8004.