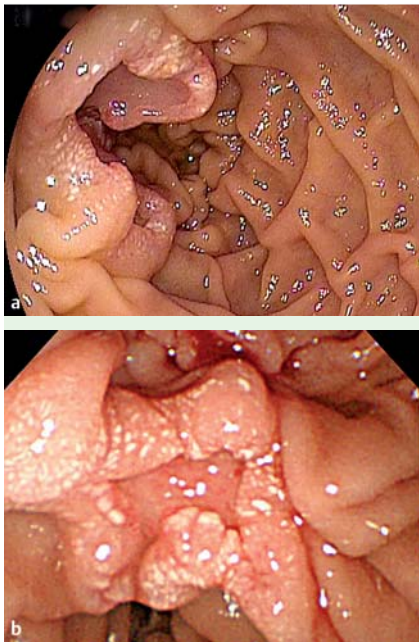


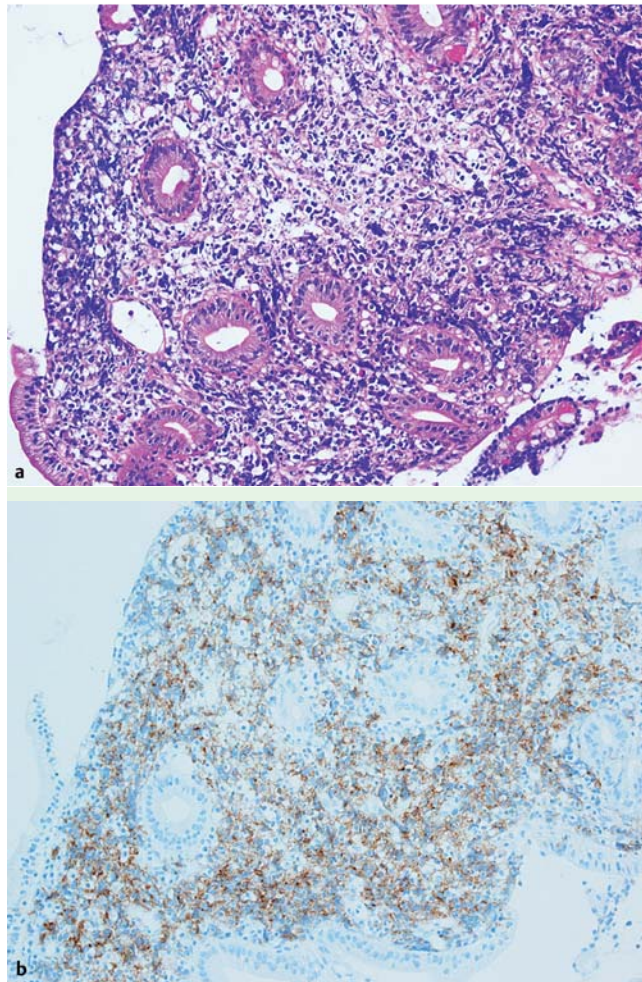
## Human immunodeficiency virus (HIV)-associated duodenal lymphoma



**Fig. 1** Endoscopic images of the duodenum showing two ulcerative lesions: **a** second part of the duodenum; **b** inferior duodenal angulus.

A 68-year-old man was referred to our hospital for HIV treatment. He noticed melena on admission. Laboratory data showed anemia, with a hemoglobin level of 8.2 g/dL. The CD4 lymphocyte count was 101 cells/ $\mu$ L.

Esophagogastroduodenoscopy (EGD) showed two ulcerative lesions in the second part of the duodenum and in the inferior duodenal angulus (● **Fig. 1**). These well-demarcated lesions consisted of an ulcer with a clean base and a regular elevated margin that had an auricle-like shape and many scattered tiny white spots. Histological examination of the biopsy specimens confirmed the diagnosis of diffuse large B-cell lymphoma (DLBCL). Immunohistochemical staining was positive for L-26 (CD20) (● **Fig. 2**). Antiretroviral therapy (ART) was started for HIV treatment. After ART, the patient received six cycles of R-CHOP (rituximab, cyclophosphamide, doxorubicin, vincristine, and prednisolone) chemotherapy. Follow-up EGD showed tumor regression. Non-Hodgkin's lymphoma is a common malignancy in HIV-positive individuals,



**Fig. 2** Photomicrographs of the biopsy specimen from the duodenal lesion (hematoxylin and eosin stain,  $\times 20$ ): **a** multiple atypical large lymphoid cells infiltrating the duodenal mucosa; **b** large lymphoid cells that are positive for L-26 (CD20).

and the gastrointestinal tract is one of the most common extranodal sites. However, HIV-associated duodenal lymphomas are very rare [1–3]. The endoscopic findings in AIDS-associated lymphoma are reported to be similar to those for gastrointestinal lymphomas in immunocompetent patients: polypoid, bulky lesions or well-defined ulcers are found in combination or as single lesions [4]. The most common HIV-associated lymphomas are Burkitt's lymphoma and DLBCL. Although the incidence of follicular lymphoma in the duodenum is relatively higher than in other portions of the gastrointestinal tract [5], follicular lymphoma has not been reported in HIV-infected patients. Our patient was diagnosed with DLBCL and showed an excellent response

to the R-CHOP chemotherapy administered after ART.

If unique duodenal ulcerative lesions are found, HIV-associated duodenal lymphoma should be considered as a rare differential diagnosis. Furthermore, accurately diagnosing DLBCLs by endoscopic biopsy is very important in such cases because HIV-associated lymphomas of the gastrointestinal tract have a poor prognosis [4] and require aggressive treatment.

Endoscopy\_UCTN\_Code\_CCL\_1AB\_2AZ\_3AB

**Competing interests:** None

S. Nakazuru<sup>1</sup>, T. Yoshio<sup>1</sup>, Y. Ogawa<sup>2</sup>,  
K. Yuguchi<sup>1</sup>, H. Hasegawa<sup>1</sup>, Y. Sakaki-  
bara<sup>1</sup>, Y. Kodama<sup>3</sup>, T. Uehira<sup>4</sup>, E. Mita<sup>1</sup>

<sup>1</sup> Department of Gastroenterology and  
Hepatology, National Hospital Organiza-  
tion, Osaka National Hospital, Osaka,  
Japan

<sup>2</sup> Department of Hematology, Osaka City  
General Hospital, Osaka, Japan

<sup>3</sup> Department of Pathology, National  
Hospital Organization, Osaka National  
Hospital, Osaka, Japan

<sup>4</sup> AIDS Medical Center, National Hospital  
Organization, Osaka National Hospital,  
Osaka, Japan

## References

- 1 *Bécheur H, Piketty C, Bloch F et al.* Endoscopic diagnosis of a duodenocolic fistula due to a non-Hodgkin's lymphoma in a patient with AIDS. *Endoscopy* 1996; 28: 528–529
- 2 *Corti M, Villafañe MF, Souto L et al.* Burkitt's lymphoma of the duodenum in a patient with AIDS. *Rev Soc Bras Med Trop* 2007; 40: 338–340
- 3 *Andhavarapu S, Tolentino AM, Jha C et al.* Diffuse large B-cell lymphoma presenting as multiple lymphomatous polyposis of the gastrointestinal tract. *Clin Lymphoma Myeloma* 2008; 8: 179–183
- 4 *Heise W, Arastéh K, Mostertz P et al.* Malignant gastrointestinal lymphomas in patients with AIDS. *Digestion* 1997; 58: 218–224
- 5 *Yoshino T, Miyake K, Ichimura K et al.* Increased incidence of follicular lymphoma in the duodenum. *Am J Surg Pathol* 2000; 24: 688–693

## Bibliography

DOI 10.1055/s-0030-1256940

*Endoscopy* 2011; 43: E384–E385

© Georg Thieme Verlag KG Stuttgart · New York ·  
ISSN 0013-726X

## Corresponding author

**S. Nakazuru, MD**

Department of Gastroenterology and Hepatology

National Hospital Organization

Osaka National Hospital

2-1-14 Houenzaka

Chuo-ku

Osaka City

Osaka 540-0006

Japan

Fax: +81-6-69463569

nakazuru@onh.go.jp