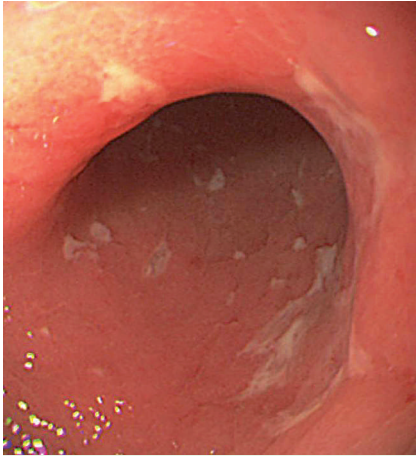
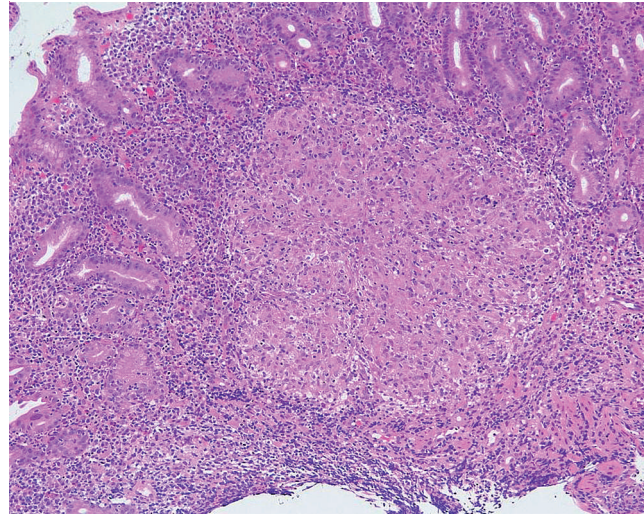


## Symptomatic gastric sarcoidosis with multiple antral ulcers



**Fig. 1** Gastroscopic finding. Multiple ulcers of the antrum, irregular-shaped or serpiginous aphthoid.



**Fig. 2** Histopathologic finding. A noncaseating epithelioid-cell granuloma including giant cells, surrounded by the infiltration of lymphocytes and proliferation of fibroblastic cells (H&E stain, × 100).

Sarcoidosis is a systemic granulomatous disease of unknown etiology that is characterized by the formation of noncaseating granulomas. Although it affects many systems, the disease has a predilection for the intrathoracic structures. Almost 90% of sarcoidosis patients have granulomas in the lungs and/or hilar nodes [1]. Gastrointestinal tract involvement in sarcoidosis is rare. Gastric sarcoidosis, particularly involving the antrum, affects approximately 10% of patients with systemic disease [2]. Gastrointestinal sarcoidosis commonly occurs subclinically, with clinical manifestations present in only 0.1%–0.9% of patients with the disease. This is a rare case report of an individual with symptomatic gastric sarcoidosis. A 66-year-old woman followed up for eye and lung sarcoidosis suffered nausea, epigastralgia, and weight loss. She underwent bronchoscopy and transbronchial biopsy which showed a noncaseating epithelial cell granuloma, and bronchoalveolar lavage which demonstrated a lymphocytic pattern suggestive of sarcoidosis. On upper endoscopy, several superficial ulcers were evident in the antral region (● Fig. 1).

Mucosal biopsies from the antral ulcers showed noncaseating granulomas (● Fig. 2). The specimen was negative for *Helicobacter pylori*. Tests using special stains for fungi (methenamine silver), acid-fast bacilli (Ziehl-Neelsen), and treponema (Warthin-Starry) gave negative results. This case illustrates the importance of endoscopy examinations for patients with sarcoidosis, particularly those with intractable primary lesions, in order to detect gastrointestinal sarcoidosis.

Endoscopy\_UCTN\_Code\_CCL\_1AB\_2AD\_3AC

**T. Akiyama<sup>1</sup>, H. Endo<sup>1</sup>, M. Inamori<sup>1</sup>, H. Iida<sup>1</sup>, K. Hosono<sup>1</sup>, K. Fujita<sup>1</sup>, M. Yoneda<sup>1</sup>, H. Takahashi<sup>1</sup>, A. Goto<sup>1</sup>, Y. Abe<sup>1</sup>, H. Kirikoshi<sup>1</sup>, N. Kobayashi<sup>1</sup>, K. Kubota<sup>1</sup>, S. Saito<sup>1</sup>, K. Nagahama<sup>2</sup>, Y. Inayama<sup>2</sup>, A. Nakajima<sup>1</sup>**

<sup>1</sup> Gastroenterology Division, Yokohama City University School of Medicine, Japan

<sup>2</sup> Department of Pathology, Yokohama City University Hospital, Japan

### References

- 1 James DG, Nevilli E, Siltzbach LE. A worldwide review of sarcoidosis. *Ann N Y Acad Sci* 1976; 278: 321–328
- 2 Fireman Z, Sternberg A, Yarchovsky Y et al. Multiple antral ulcers in gastric sarcoid. *J Clin Gastroenterol* 1997; 24: 97–99

### Bibliography

DOI 10.1055/s-0029-1214690

Endoscopy 2009; 41: E159

© Georg Thieme Verlag KG Stuttgart · New York · ISSN 0013-726X

### Corresponding author

**M. Inamori, MD**

Gastroenterology Division,  
Yokohama City University School of Medicine

3-9 Fukuura

Kanazawa-ku

Yokohama

236-0004

Japan

Tel.: +81-45-787-2640

Fax: +81-45-784-3546

inamorim@med.yokohama-cu.ac.jp