

Retroflexed endoscopic submucosal dissection of a lesion invading the pyloric ring, using a newly developed thin endoscope



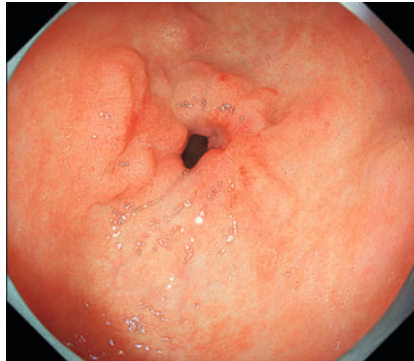
Endoscopic resection of a pyloric lesion is challenging because of the limited maneuverability of endoscopes. Here, we report a case of a depressed pyloric lesion treated with endoscopic resection using a newly developed thin endoscope.

A 74-year-old woman who had previously undergone *Helicobacter pylori* eradication was found to have a pyloric lesion on follow-up endoscopy. Biopsy suggested that the lesion was an adenocarcinoma, and the patient was referred to our institute for further management.

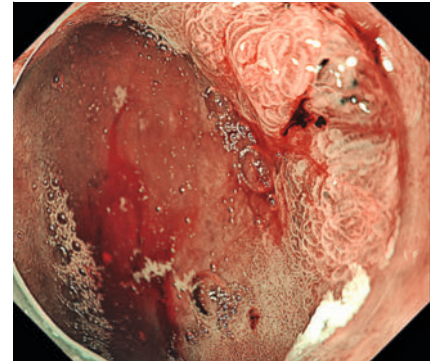
The lesion was located in the posterior region of the pylorus, invading the pyloric ring (▶ Fig. 1). Another lesion was identified on the anterior wall of the pylorus. Considering the absence of signs of invasion, we performed endoscopic resection of the lesion (▶ Video 1).

First, we made markings on the oral side using magnifying endoscopy (GIF-XZ1200; Olympus Co. Ltd., Tokyo, Japan). The tumor had invaded the posterior wall of the duodenal bulb, and the margin could not be identified in the forward view (▶ Fig. 2). Retroflexed observation was impossible because of the narrow space of the bulb. Therefore, we used a newly developed thin endoscope (EG-840TP; Fujifilm, Tokyo, Japan), with a width of 7.9 mm, large working channel of 3.2 mm, and wide angles (up, 210°; down, 160°) [1]. We made circumferential markings in the retroflexed view and performed endoscopic submucosal dissection (ESD) from the anal side (▶ Fig. 3). Subsequently, ESD was performed from the oral side using an endoscope with an attached hood (DH-083ST; Fujifilm). Using the pulley traction method (▶ Fig. 4) [2–5], we successfully achieved en bloc resection of the lesion (▶ Fig. 5).

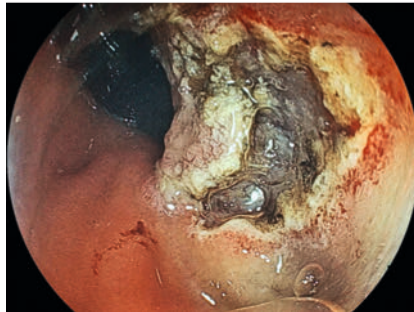
The final pathological diagnosis was 0-IIc, 29 × 15-mm, well-differentiated tubular adenocarcinoma, pT1a, pUL1, ly0, v0, pHM0, pVM0, with the two lesions considered continuous.



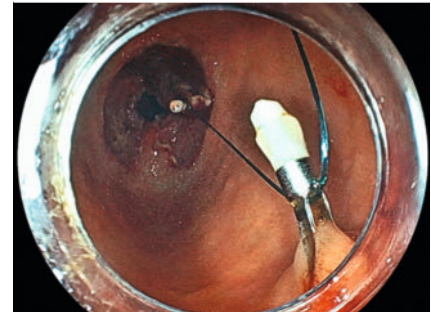
▶ Fig. 1 Endoscopic view of a lesion located in the posterior pyloric region, invading the pyloric ring, and another lesion located on the anterior pyloric wall.



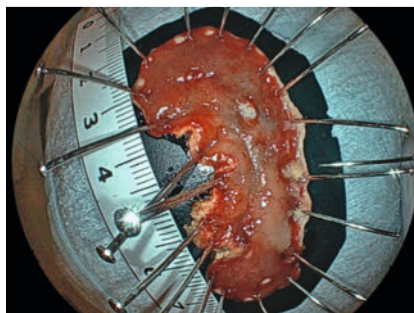
▶ Fig. 2 Endoscopic view of a tumor invading the posterior wall of the duodenal bulb.



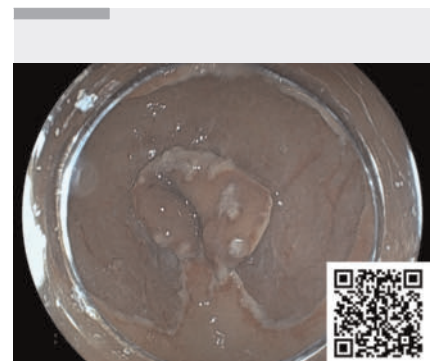
▶ Fig. 3 Endoscopic view of endoscopic submucosal dissection being performed from the anal side.



▶ Fig. 4 Endoscopic view demonstrating the pulley traction method.



▶ Fig. 5 Endoscopic view showing the resected specimen after en bloc resection of the lesion.



▶ Video 1 Retroflexed endoscopic submucosal dissection of a lesion invading the pyloric ring, using a newly developed thin endoscope.

Endoscopy_UCTN_Code_TTT_1AO_2AG

Conflict of Interest

The authors declare that they have no conflict of interest.

The authors

Satoki Shichijo¹, **Daiki Kitagawa^{1,2}**, **Yuya Asada¹**, **Shunsuke Yoshii¹**, **Noriya Uedo¹**, **Ryu Ishihara¹**, **Tomoki Michida¹**

- 1 Gastrointestinal Oncology, Osaka International Cancer Institute, Osaka, Japan
- 2 Gastroenterology, Osaka Metropolitan University Graduate School of Medicine, Osaka, Japan

Corresponding author

Satoki Shichijo, MD, PhD

Department of Gastrointestinal Oncology,
Osaka International Cancer Institute, 3-1-69
Otemae, Chuo-ku, Osaka 541-8567, Japan
7satoki@gmail.com

References

- [1] Miura Y, Fukuda H, Ueno T et al. Endoscopic submucosal dissection of gastric neoplasms with severe fibrosis using a new thin-therapeutic endoscope and a dedicated conical cap. *Endoscopy* 2023; 55: e872–e873

- [2] Oyama T. Counter traction makes endoscopic submucosal dissection easier. *Clin Endosc* 2012; 45: 375–378. doi:10.5946/ce.2012.45.4.375
- [3] Shichijo S, Matsuno K, Takeuchi Y et al. Pull-ey traction-assisted colonic endoscopic submucosal dissection affords good visibility of submucosal layer. *VideoGIE* 2018; 3: 358–360. doi:10.1016/j.vgie.2018.08.007
- [4] Shichijo S, Takeuchi Y, Matsuno K et al. Pull-ey traction-assisted colonic endoscopic submucosal dissection: a retrospective case series. *Dig Dis* 2019; 37: 473–477. doi:10.1159/000499670
- [5] Shichijo S, Takeuchi Y, Waki K et al. Pulley traction-assisted endoscopic submucosal dissection with hemostatic forceps for a laterally spreading tumor in the ascending colon. *VideoGIE* 2020; 5: 684–685

Bibliography

Endoscopy 2024; 56: E148–E149

DOI 10.1055/a-2248-0688

ISSN 0013-726X

© 2024. The Author(s).

This is an open access article published by Thieme under the terms of the Creative Commons Attribution License, permitting unrestricted use, distribution, and reproduction so long as the original work is properly cited.
(<https://creativecommons.org/licenses/by/4.0/>)

Georg Thieme Verlag KG, Rüdigerstraße 14,
70469 Stuttgart, Germany



ENDOSCOPY E-VIDEOS

<https://eref.thieme.de/e-videos>



E-Videos is an open access online section of the journal *Endoscopy*, reporting on interesting cases

and new techniques in gastroenterological endoscopy. All papers include a high-quality video and are published with a Creative Commons CC-BY license. *Endoscopy E-Videos* qualify for HINARI discounts and waivers and eligibility is automatically checked during the submission process. We grant 100% waivers to articles whose corresponding authors are based in Group A countries and 50% waivers to those who are based in Group B countries as classified by Research4Life (see: <https://www.research4life.org/access/eligibility/>).

This section has its own submission website at

<https://mc.manuscriptcentral.com/e-videos>