



# Starfield Pattern on Brain MRI in a Patient with Duchenne Muscular Dystrophy

Vivien X. Xie<sup>1</sup>  Dana Harrar<sup>1</sup> Jonathan Murnick<sup>2</sup> Diana Bharucha-Goebel<sup>1</sup> Kuntal Sen<sup>3</sup> 

<sup>1</sup>Division of Neurology, Children's National Hospital, Washington, District of Columbia, United States

<sup>2</sup>Division of Diagnostic Imaging and Radiology, Children's National Hospital, Washington, District of Columbia, United States

<sup>3</sup>Division of Neurodevelopmental Pediatrics and Neurogenetics, Children's National Hospital, Washington, District of Columbia, United States

Address for correspondence Vivien X. Xie, MD, 111 Michigan Ave NW, Washington, DC 20010, United States (e-mail: vxie@childrensnational.org).

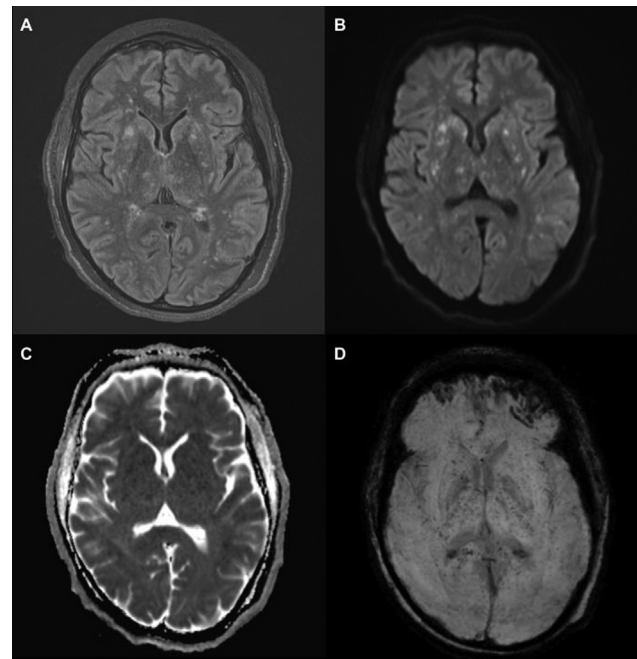
Neuropediatrics 2024;55:146–147.

An 18-year-old man with Duchenne muscular dystrophy (DMD) presented with encephalopathy 20 minutes after falling from a sitting position. X-ray of his left femur showed a minimally displaced acute fracture. On initial examination, he was obtunded with minimal withdrawal to painful stimuli with a Glasgow coma scale (GCS) score of 9. Computed tomography (CT) of the brain was without acute intracranial pathology and electroencephalogram showed diffuse slowing. Magnetic resonance imaging (MRI) of the brain demonstrated innumerable punctate foci of T2 hyperintensity (**Fig. 1A**) with associated diffusion restriction (**Fig. 1B, 1C**) and increased susceptibility (**Fig. 1D**) in a “starfield pattern” characteristic of a diagnosis of cerebral fat embolism syndrome (FES).

FES classically presents as a triad of encephalopathy, respiratory failure, and rash,<sup>1</sup> although not all three are required for diagnosis. This commonly follows a fracture where lipid microparticles are released and occlude microvasculature throughout the body.<sup>2</sup> Fat microemboli to the brain lead to foci of cytotoxic edema, which appear as scattered areas of diffusion restriction<sup>3</sup> likened to a starfield. Patients with DMD are more susceptible to fractures even with minor trauma due to osteoporosis from reduced ambulation and chronic corticosteroid use. A high index of suspicion for FES should be maintained for patients with DMD presenting with altered mental status following trauma.

## Conflict of Interest

None declared.



**Fig. 1** (A) Magnetic resonance imaging (MRI) of the brain axial T2 fluid attenuated inversion recovery (FLAIR) sequence showing innumerable hyperintense punctate foci throughout the deep gray structures and cerebral white matter with corresponding diffusion restriction on (B) diffusion weighted imaging (DWI) and (C) apparent diffusion coefficient (ADC) sequences and increased susceptibility on the (D) susceptibility weighted imaging (SWI) sequence.

received

May 25, 2023

accepted after revision

July 25, 2023

accepted manuscript online

August 2, 2023

article published online

September 11, 2023

© 2023, Thieme. All rights reserved.  
Georg Thieme Verlag KG,  
Rüdigerstraße 14,  
70469 Stuttgart, Germany

DOI <https://doi.org/10.1055/a-2146-6989>.  
ISSN 0174-304X.

**References**

- 1 Medeiros MO, Behrend C, King W, Sanders J, Kissel J, Ciafaloni E. Fat embolism syndrome in patients with Duchenne muscular dystrophy. *Neurology* 2013;80(14):1350–1352
- 2 Feder D, Koch ME, Palmieri B, Fonseca FLA, Carvalho AAS. Fat embolism after fractures in Duchenne muscular dystrophy: an underdiagnosed complication? A systematic review. *Ther Clin Risk Manag* 2017;13:1357–1361
- 3 Parizel PM, Demey HE, Veeckmans G, et al. Early diagnosis of cerebral fat embolism syndrome by diffusion-weighted MRI (starfield pattern). *Stroke* 2001;32(12):2942–2944