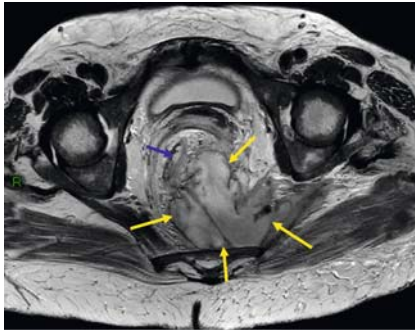
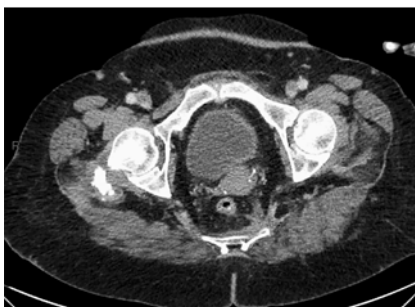


Management of pelvic abscess complicating a rectoanal fistula using endoscopic ultrasound-guided drainage with an electrocautery-enhanced lumen-apposing metal stent

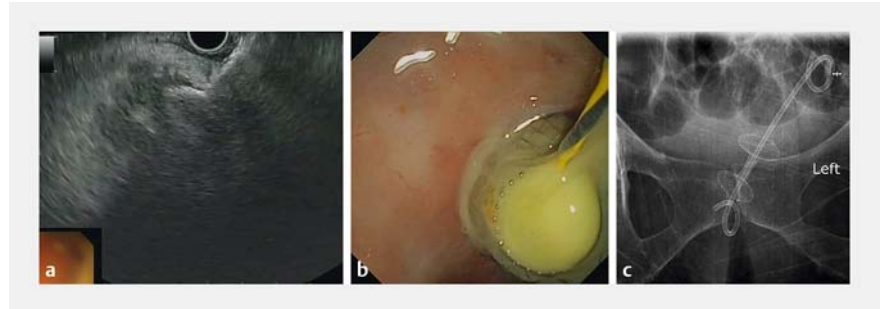


► **Fig. 1** View of a large pelvic abscess on magnetic resonance imaging (blue arrow: rectal lumen; orange arrows: pelvic abscess).

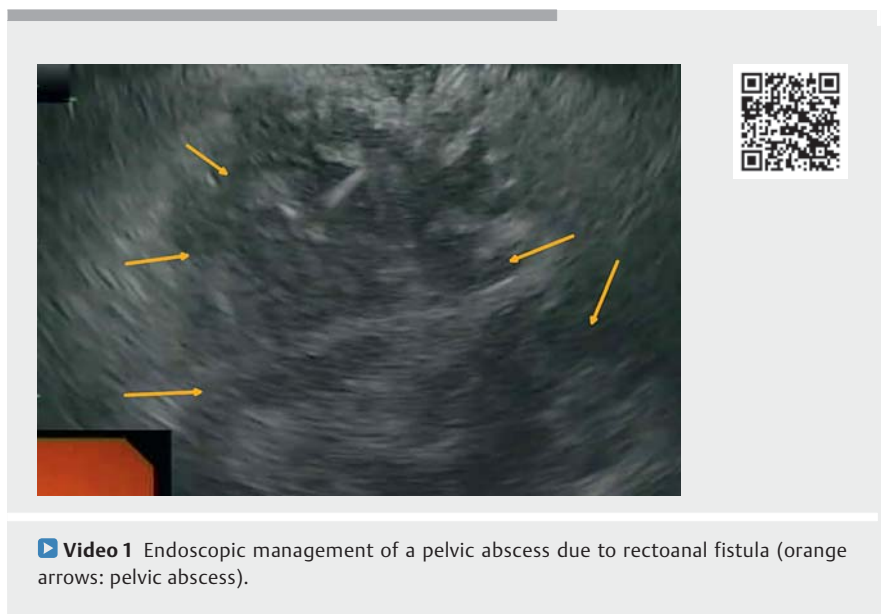


► **Fig. 3** Computed tomography 6 months later showed no recurrence of the abscess.

The management of pelvic abscess is mainly radiological or surgical [1]. The use of electrocautery-enhanced lumen-apposing metal stents (LAMS) allows efficient drainage of intra-abdominal collections [2]. A few retrospective studies and case series have demonstrated the feasibility and safety of EUS-guided drainage of pelvic abscesses [3–5]. We present a case of a large pelvic abscess complicating a rectoanal fistula that was successfully drained without recurrence using an electrocautery-enhanced LAMS. During the lockdown due to COVID-19, an 81-year-old woman waited 1 month before attending the emergency room for rectoanal pain with fever. On her admission, computed tomography and



► **Fig. 2** Endoscopic ultrasound-guided drainage of a pelvic abscess using an electrocautery-enhanced lumen-apposing metal stent (LAMS). **a** Deployment of the proximal flange of the LAMS into the pelvic abscess under EUS guidance. **b** Deployment of the distal flange of the LAMS into the rectal lumen under endoscopic guidance. **c** A double pigtail stent was inserted through the LAMS.



► **Video 1** Endoscopic management of a pelvic abscess due to rectoanal fistula (orange arrows: pelvic abscess).

magnetic resonance imaging showed a large pelvic abscess measuring 11 cm (► **Fig. 1**). The location of the pelvic abscess did not allow for radiological drainage, and the patient's medical history precluded surgical management. EUS-guided drainage of the pelvic abscess was performed a week after the patient's admission (► **Video 1**).

The abscess was accessed using a 19-G needle and aspirated purulent liquid was sent for bacteriological analysis. A 0.025-

inch guidewire was introduced through the needle into the abscess. The fistula tract was created using the electrocautery-enhanced LAMS (10×10 mm). Then, the LAMS was deployed to drain the abscess into the lumen of the colon (► **Fig. 2a, b**). During the same procedure, a double pigtail stent was inserted through the LAMS (► **Fig. 2c**). No adverse events were reported. At 1 week, endoscopic cleaning of the abscess was performed through the LAMS. The LAMS was re-

moved after 3 weeks and replaced by a double pigtail stent. At 6 months, the double pigtail stent had migrated outwards and the abscess disappeared without recurrence (► **Fig. 3**).


This case highlights the use of a LAMS in the drainage of a pelvic abscess and successful outcome without recurrence. Future prospective studies are needed to confirm the use of LAMS for this indication and to determine the place of EUS-guided drainage of pelvic collections.

Endoscopy_UCTN_Code_TTT_1AQ_2AF

Competing interests

The authors declare that they have no conflict of interest.

The authors

Laurent Monino , **Hubert Piessevaux**, **Marie-Armelle Denis**, **Tom G. Moreels**

Department of Gastroenterology and Hepatology, Université Catholique de Louvain, Cliniques Universitaires Saint-Luc, Brussels, Belgium

Corresponding author

Laurent Monino, MD

Department of Gastroenterology and Hepatology, Cliniques Universitaires Saint Luc, Université Catholique de Louvain, Ave Hippocrate, 10, 1200 Brussels, Belgium
 laurent.monino@uclouvain.be
 monino.laurent@hotmail.fr

References

- [1] Sartelli M, Chichom-Mefire A, Labricciosa FM et al. The management of intra-abdominal infections from a global perspective: 2017 WSES guidelines for management of intra-abdominal infections. *World J Emerg Surg* 2017; 12: 29
- [2] Sharma P, McCarty TR, Chhoda A et al. Alternative uses of lumen apposing metal stents. *World J Gastroenterol* 2020; 26: 2715–2728
- [3] Fernandez-Urien I. Endoscopic ultrasound-guided drainage of pelvic collections and abscesses. *World J Gastrointest Endosc* 2010; 2: 223
- [4] Lisotti A, Cominardi A, Bacchilega I et al. EUS-guided transrectal drainage of pelvic fluid collections using electrocautery-enhanced lumen-apposing metal stents: a case series. *VideoGIE* 2020; 5: 380–385
- [5] Poincloux L, Caillol F, Allimant C et al. Long-term outcome of endoscopic ultrasound-guided pelvic abscess drainage: a two-center series. *Endoscopy* 2017; 49: 484–490

Bibliography

Endoscopy 2021; 53: E409–E410

DOI 10.1055/a-1333-0653

ISSN 0013-726X

published online 14.1.2021

© 2021. Thieme. All rights reserved.

Georg Thieme Verlag KG, Rüdigerstraße 14, 70469 Stuttgart, Germany

ENDOSCOPY E-VIDEOS

<https://eref.thieme.de/e-videos>



Endoscopy E-Videos is a free access online section, reporting on interesting cases and new

techniques in gastroenterological endoscopy. All papers include a high quality video and all contributions are freely accessible online.

This section has its own submission website at

<https://mc.manuscriptcentral.com/e-videos>