

## Unusual endoscopic findings in an immunosuppressed patient

Immunosuppressed patients are susceptible to infections by opportunistic agents such as *Leishmania* that could cause visceral leishmaniasis with gastrointestinal involvement in up to 10% of cases.

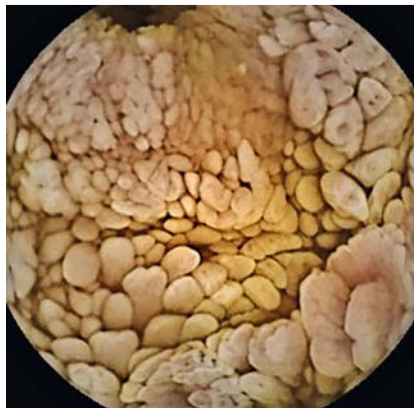
We report a 41-year-old man with human immunodeficiency virus (HIV) infection stage C3 with CD4 lymphocytes 81/mm<sup>3</sup>, 4,070 leukocytes (47.2% lymphocytes, 0.0% eosinophils, rest of differential normal) treated with antiretroviral therapy (dolutegravir/abacavir/lamivudine) with good adherence. He also reported mesangiocapillary glomerulonephritis type-1, hepatocutaneous porphyria, and a 7-year history of recurrent visceral leishmaniasis treated with liposomal amphotericin B as secondary prophylaxis. Esophagogastroduodenoscopy and colonoscopy indicated for chronic diarrhea and anemia performed 5 years ago displayed antral erythema, mild nodular appearance in the duodenal mucosa, and normal colonic mucosa. Gastric, duodenal, and colonic biopsies revealed *Leishmania spp* despite treatment with liposomal amphotericin B.

A video capsule endoscopy (VCE) was now indicated for persistent diarrhea. Enteropathy with atrophic and patchy, marked edema of the villus, and whitish nodularity with a “river bedrock” appearance (▶ **Fig. 1–3**) in the duodenum and jejunum were identified (▶ **Video 1**). Further gastric and duodenal biopsies showed an accumulation of macrophages in the lamina propria of the mucosa with intracytoplasmic *Leishmania spp* (▶ **Fig. 4**). Treatment with meglumine antimoniate was initiated owing to previous failure with liposomal amphotericin B, without response.

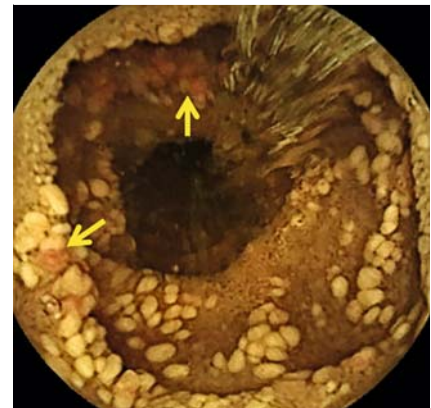
Some cases of visceral leishmaniasis showing non-specific findings (atrophy, edema, and whitish nodular mucosa) on esophagogastroduodenoscopy have been reported [1,2], with the mucosa appearing normal in up of 45% of cases [3,4]. There is only one case reporting



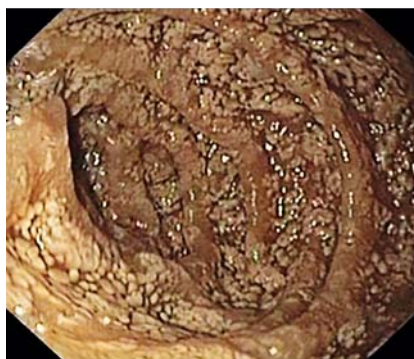
▶ **Video 1** Unusual endoscopic findings in an immunosuppressed patient.



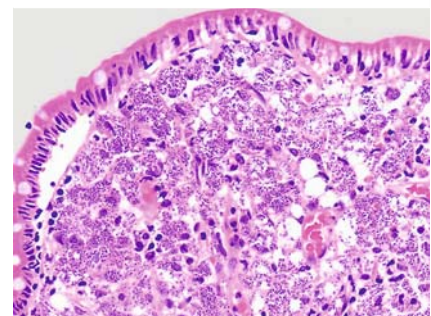
▶ **Fig. 1** Marked edema of villi and whitish nodularity in the proximal duodenum.



▶ **Fig. 2** Isolated erythematous nodules in the jejunum (arrows).



▶ **Fig. 3** Atrophic and patchy duodenal pattern with whitish nodularity observed on esophagogastroduodenoscopy.



▶ **Fig. 4** Accumulation of macrophages in the lamina propria of the mucosa with amastigotes of *Leishmania protozoa* in their cytoplasm; hematoxylin and eosin, ×40.

VCE findings of visceral leishmaniasis in an immunocompromised patient with a diffuse intestinal atrophic pattern [5]. We observed a similar enteropathy, although in a patchy distribution, on VCE and esophagogastroduodenoscopy. Atrophic enteropathy displayed as a “river bedrock” appearance would be a possible sign of an advanced stage of life-threatening visceral leishmaniasis. VCE may provide useful information on diagnoses, extension, and severity of gastrointestinal lesions in patients with severe immunosuppression and gastrointestinal symptoms.

Endoscopy\_UCTN\_Code\_CCL\_1AC\_2AG

### Competing interests

The authors declare that they have no conflict of interest.

### The authors

**Victoria Alejandra Jimenez-Garcia**<sup>1,2</sup>, **Rafael Romero-Castro**<sup>1,2</sup>, **Juan Rios-Martin**<sup>3</sup>, **Federico Argüelles-Arias**<sup>4,5</sup>, **Adoracion Valiente-Mendez**<sup>6</sup>, **Pedro Hergueta-Delgado**<sup>1</sup>, **Angel Caunedo-Alvarez**<sup>1,4</sup>

- 1 Virgen Macarena University Hospital, Endoscopy Division, Sevilla, Spain
- 2 Hospital Vithas Nisa Sevilla, Endoscopy Unit, Sevilla, Spain
- 3 Virgen Macarena University Hospital, Pathology Division, Sevilla, Spain

- 4 Virgen Macarena University Hospital, Gastroenterology Division, Sevilla, Spain
- 5 University of Seville, Department of Medicine, Seville, Spain
- 6 Virgen Macarena University Hospital; Unidad Clínica de Enfermedades Infecciosas, Microbiología y Medicina Preventiva; Universidad de Sevilla and Instituto de Biomedicina de Sevilla, Sevilla, Spain

### Corresponding author

**Victoria Alejandra Jimenez-Garcia, MD, PhD**

Virgen Macarena University Hospital, Endoscopy Division, Av. Dr. Fedriani s/n, 41009, Sevilla, Spain  
drajimenezg@hotmail.com

### References

- [1] Samiullah S, Dinneen HS, Klein KM et al. Endoscopic appearance of duodenal mucosa in GI leishmaniasis. *Gastrointest Endosc* 2013; 78: 962–963
- [2] Egea Valenzuela J, Baños Madrid R, Rodrigo Agudo JL et al. Duodenal leishmaniasis in a HIV patient. *Rev Esp Enferm Dig* 2009; 101: 60–62
- [3] Laguna F, García-Samaniego J, Soriano V et al. Gastrointestinal leishmaniasis in human immunodeficiency virus-infected patients: report of five cases and review. *Clin Infect Dis* 1994; 19: 48–53
- [4] Gómez-Espín R, Fuentes E, López-Espín MI et al. Visceral leishmaniasis diagnosed by double balloon enteroscopy. *Rev Esp Enferm Dig* 2012; 104: 333–334
- [5] Marinoni B, Tontini GE, Maggioni M et al. Intestinal leishmaniasis: a rare case of enteropathy. *Endoscopy* 2020; 52: E335–E336

### Bibliography

Endoscopy 2021; 53: E440–E441

DOI 10.1055/a-1328-2365

ISSN 0013-726X

published online 27.1.2021

© 2021. Thieme. All rights reserved.

Georg Thieme Verlag KG, Rüdigerstraße 14, 70469 Stuttgart, Germany

### ENDOSCOPY E-VIDEOS

<https://eref.thieme.de/e-videos>



Endoscopy E-Videos is a free access online section, reporting on interesting cases and new

techniques in gastroenterological endoscopy. All papers include a high quality video and all contributions are freely accessible online.

This section has its own submission website at

<https://mc.manuscriptcentral.com/e-videos>