

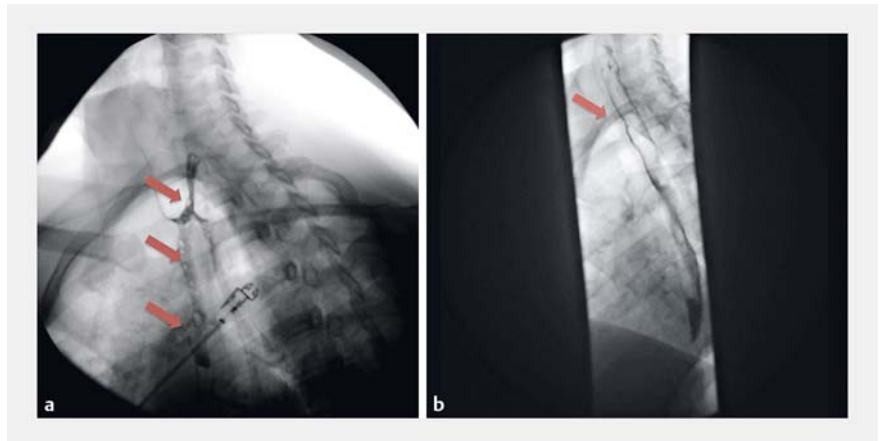
## Endoscopic closure of a chronic tracheo-esophageal fistula with an over-the-scope suturing technique



► **Fig. 1** Tracheo-esophageal fistula at the level of T1, extending for 1 cm and measuring 4 mm in width.

A 47-year-old Hispanic woman developed a tracheo-esophageal fistula (TEF) secondary to prolonged intubation for septic shock with multiple organ dysfunction. Upon extubation, the patient complained of persistent dysphagia, and a barium swallow showed a TEF, for which a temporary percutaneous gastrostomy tube was placed to prevent aspiration until surgical closure was performed. Unfortunately, the patient was lost to follow-up. A year later, she was admitted to our institution for leakage around the gastrostomy site and for closure evaluation of the TEF.

A computed tomography of the chest showed a TEF at the level of T1 and pulmonary bibasilar ground-glass opacities (► **Fig. 1**). A Barium swallow study showed contrast in the lower trachea and left main stem bronchus (► **Fig. 2a**). Endoscopy showed a fistula at 19 cm from the incisors. After endoscopic ultrasound of the TEF showed no blood vessels in the immediate periphery, preparations were made for endoscopic closure of the TEF. Closure was accomplished with a combination of argon plasma coagulation of the edges and endoscopic suturing. The patient was discharged 2 days after the procedure (► **Video 1**).



► **Fig. 2** Barium swallow. **a** Pre-procedure barium swallow showed contrast in the lower trachea and left main stem bronchus (arrows). **b** Post-procedure barium swallow showed no evidence (arrow) of patent tracheo-esophageal fistula or contrast leakage.



► **Video 1** Endoscopic closure of a chronic tracheo-esophageal fistula with an over-the-scope suturing technique.

At 8 weeks after hospital discharge, a barium swallow demonstrated no evidence of contrast leakage into the airway (► **Fig. 2b**).

A TEF is a common complication resulting from prolonged endotracheal intubation [1,2] and can lead to recurrent aspiration pneumonia and dysphagia. Traditional management of these fistulas

has been surgery [2]. However, surgical procedures, though effective, should nowadays be considered second-line therapy for uncomplicated TEF. Current endoscopic equipment and techniques offer a less-invasive approach to treatment, with faster recovery times. Esophageal stent [3] and clip [4] placement are among the endoscopic techniques pre-

viously used to treat such fistulas. Endoscopic suturing, however, is emerging as an effective option.

Endoscopy\_UCTN\_Code\_TTT\_1AO\_2AC

### Competing interests

None

### The authors

**Marco Bustamante Bernal<sup>1</sup>, Srinidhi Bhat<sup>2</sup>, Antonio Mendoza-Ladd<sup>1</sup>**

- 1 Division of Gastroenterology, Paul L. Foster School of Medicine, Texas Tech University Health Science Center, El Paso, Texas, United States
- 2 Department of Internal Medicine, Paul L. Foster School of Medicine, Texas Tech University Health Science Center, El Paso, Texas, United States

### Corresponding author

**Marco Bustamante Bernal, MD**

Division of Gastroenterology, Texas Tech University Health Sciences Center, 4800 Alberta Ave., El Paso, Texas 79905-2700, United States

Fax: +1-915-545-6634

marco.a.bustamante@ttuhsc.edu

### References

- [1] Flege JB. Tracheoesophageal fistula caused by cuffed tracheostomy tube. *Ann Surg* 1967; 166: 153–156
- [2] Puma F, Vannucci J, Santoprete S et al. Surgery and perioperative management for post intubation tracheo esophageal fistula: case series analysis. *J Thorac Dis* 2017; 9: 278–286
- [3] Singhal SK, Virk RS, Dass A et al. Tracheoesophageal fistula: new option in management. *Indian J Otolaryngol Head Neck Surg* 2006; 58: 300–302
- [4] Matsui S, Kashida H, Asakuma Y et al. Endoscopic treatment of tracheoesophageal fistula using over-the-scope-clip system. *Ann Gastroenterol* 2017; 30: 578

### Bibliography

DOI <https://doi.org/10.1055/a-0593-5447>

Published online: 17.5.2018

Endoscopy 2018; 50: E155–E156

© Georg Thieme Verlag KG

Stuttgart · New York

ISSN 0013-726X

### ENDOSCOPY E-VIDEOS

<https://eref.thieme.de/e-videos>



*Endoscopy E-Videos* is a free access online section, reporting on interesting cases and new

techniques in gastroenterological endoscopy. All papers include a high quality video and all contributions are freely accessible online.

This section has its own submission website at

<https://mc.manuscriptcentral.com/e-videos>