

Supporting Information

for DOI: 10.1055/s-0041-1738430

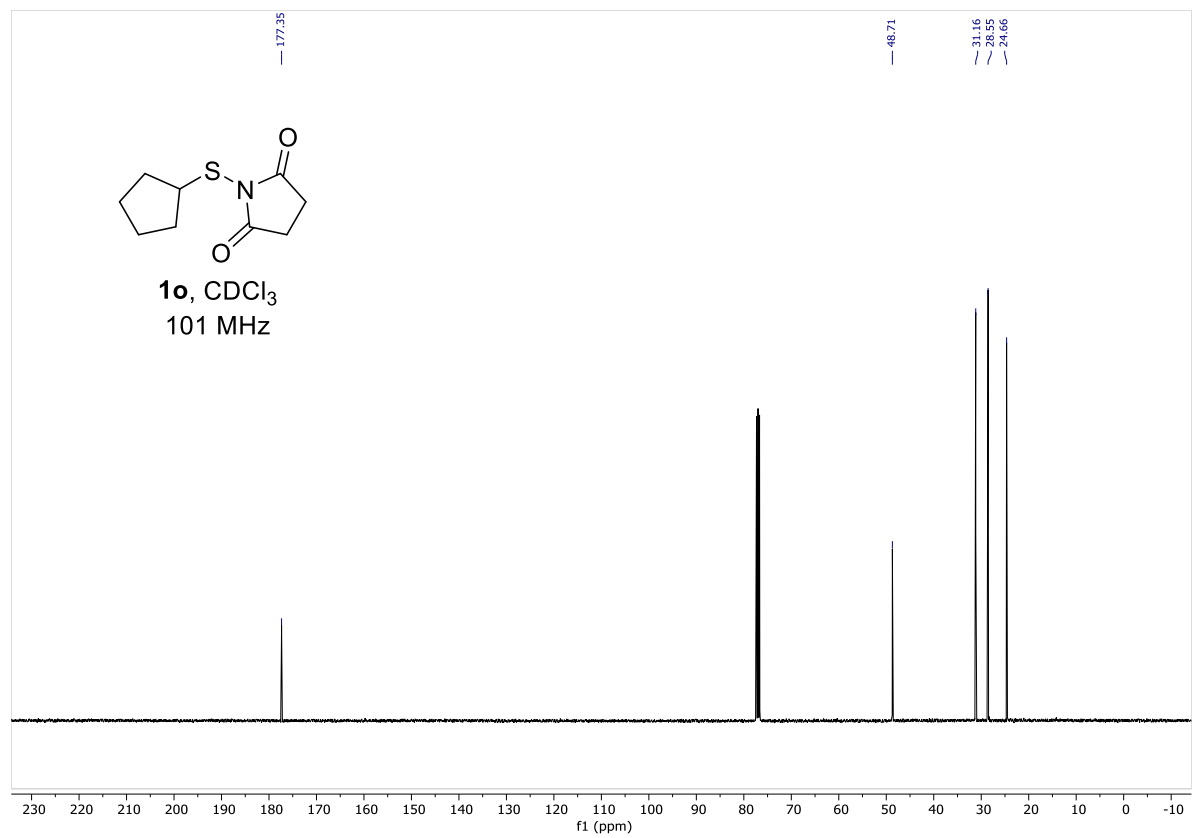
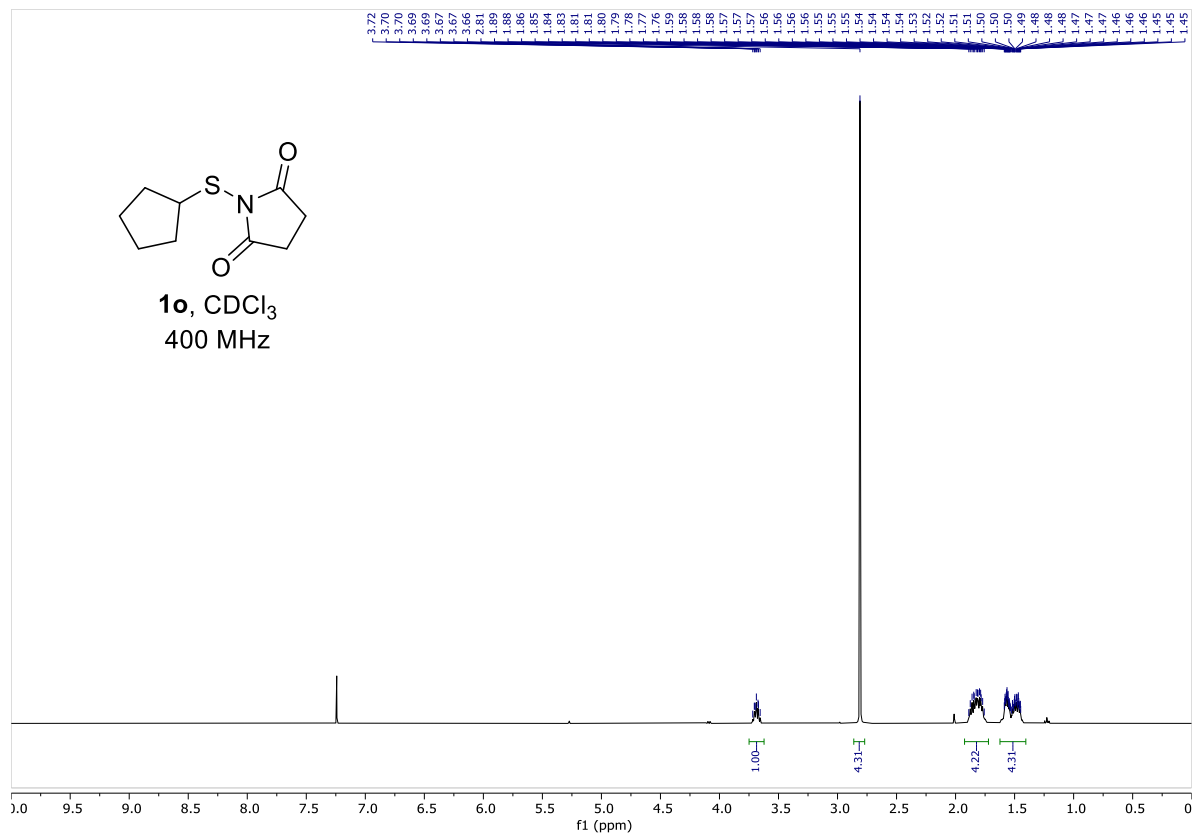
© 2022. Thieme. All rights reserved.

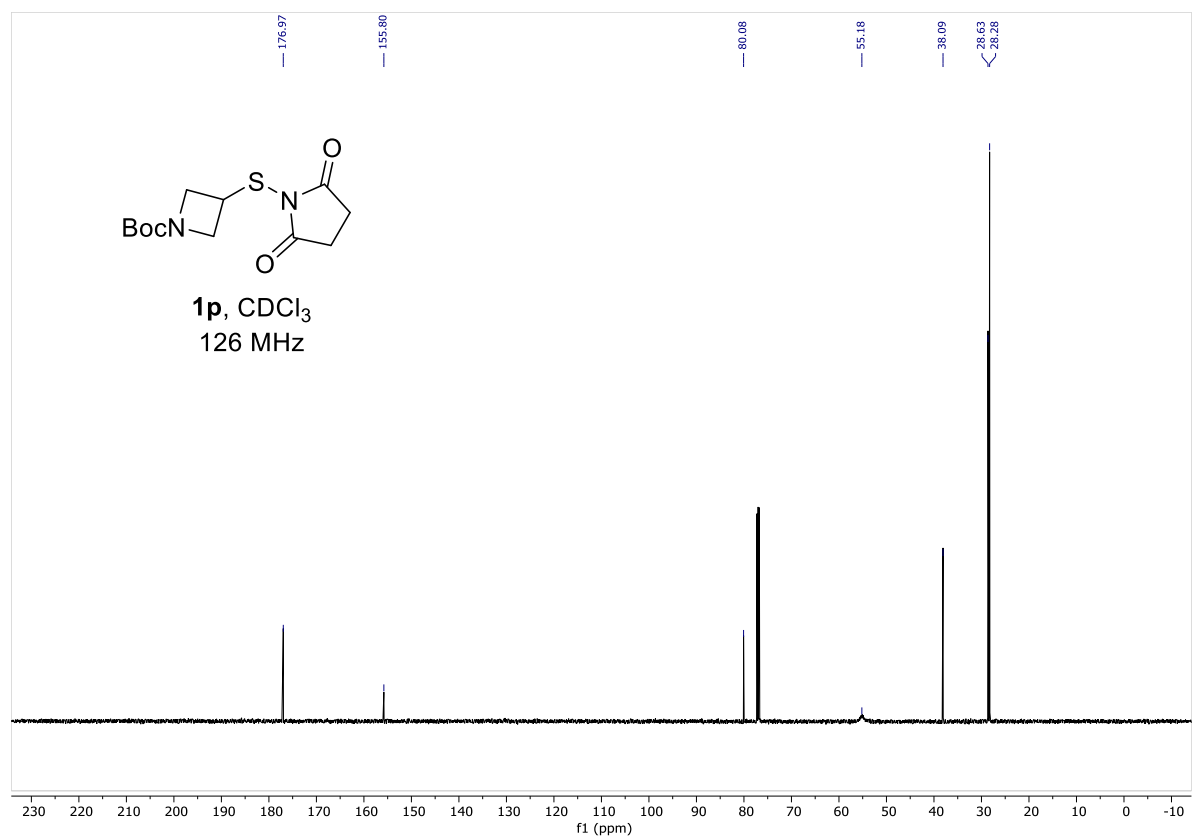
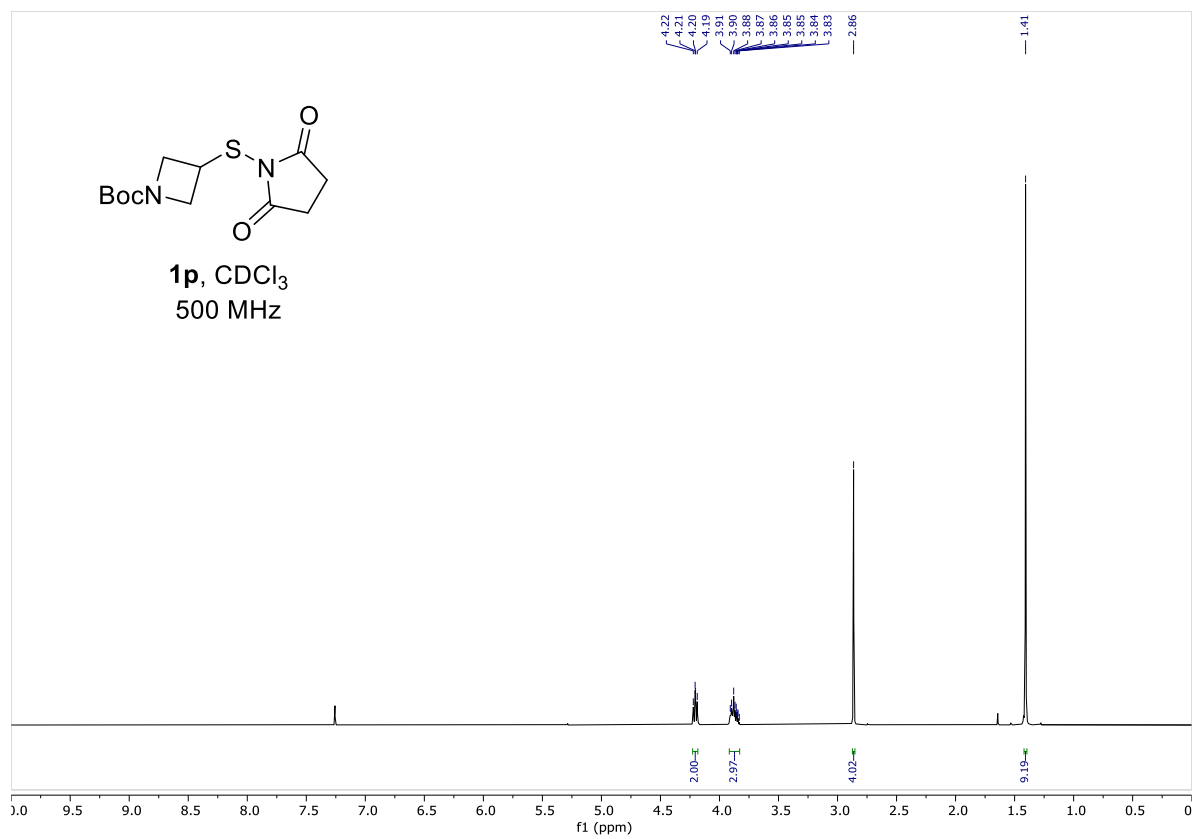
Georg Thieme Verlag KG, Rüdigerstraße 14, 70469 Stuttgart, Germany

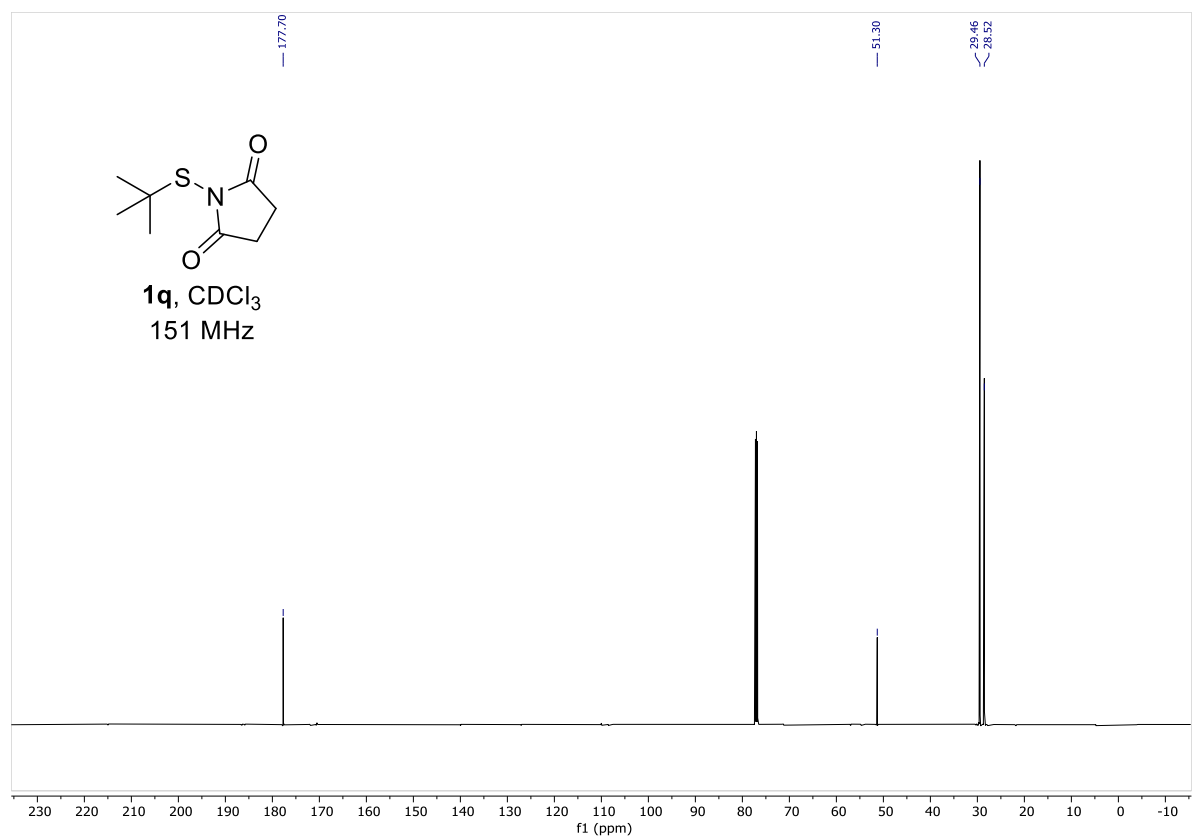
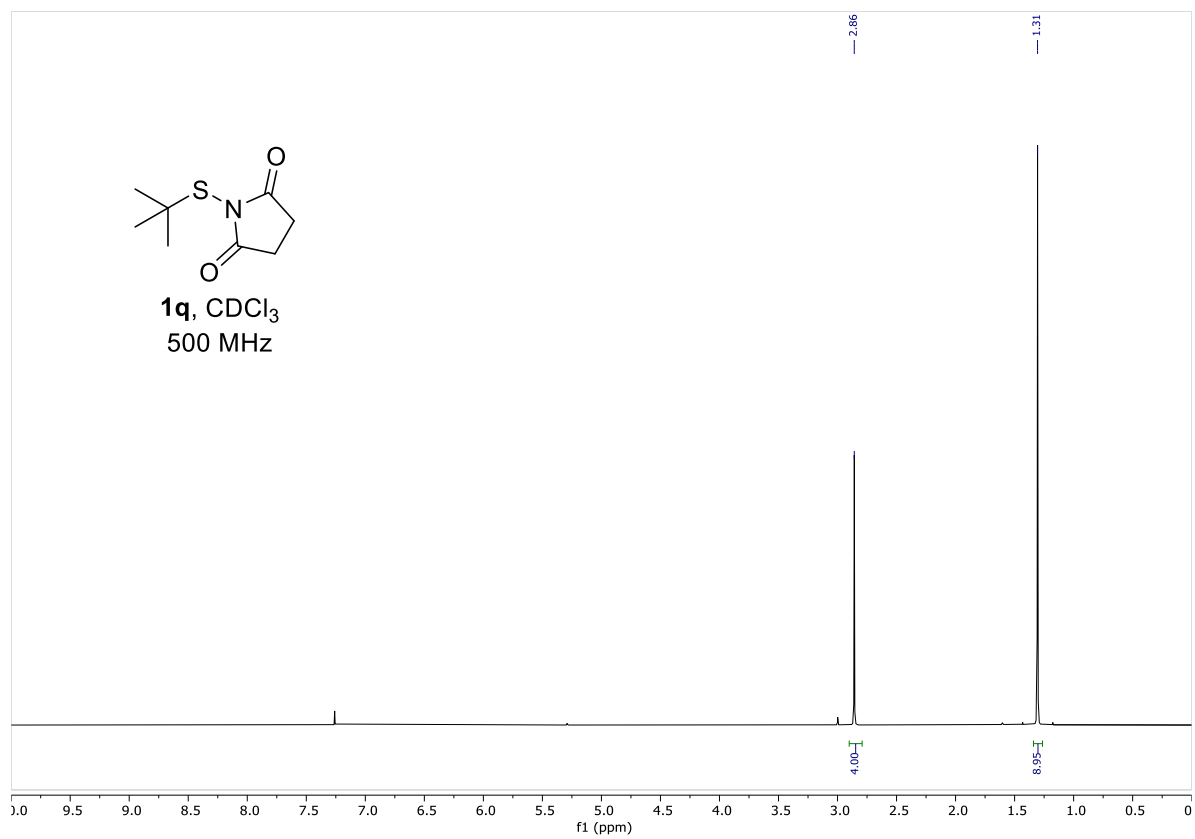
SUPPORTING INFORMATION

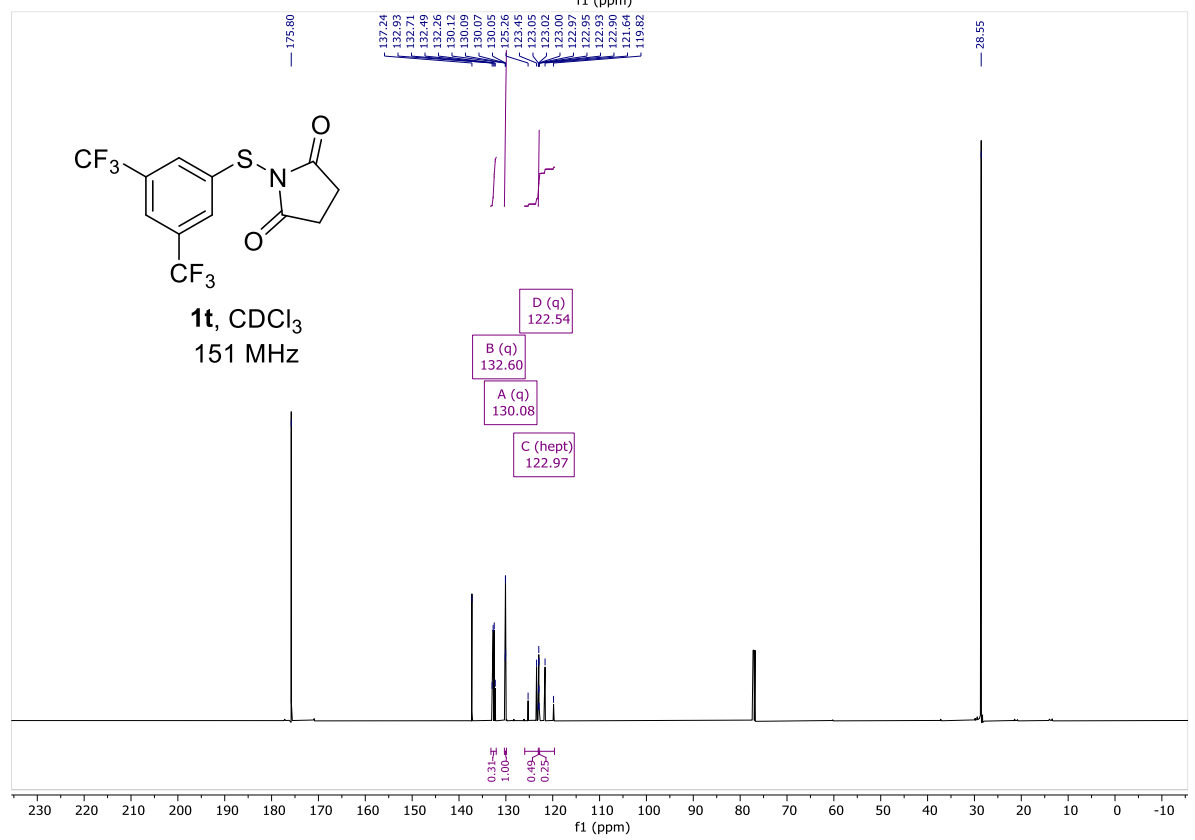
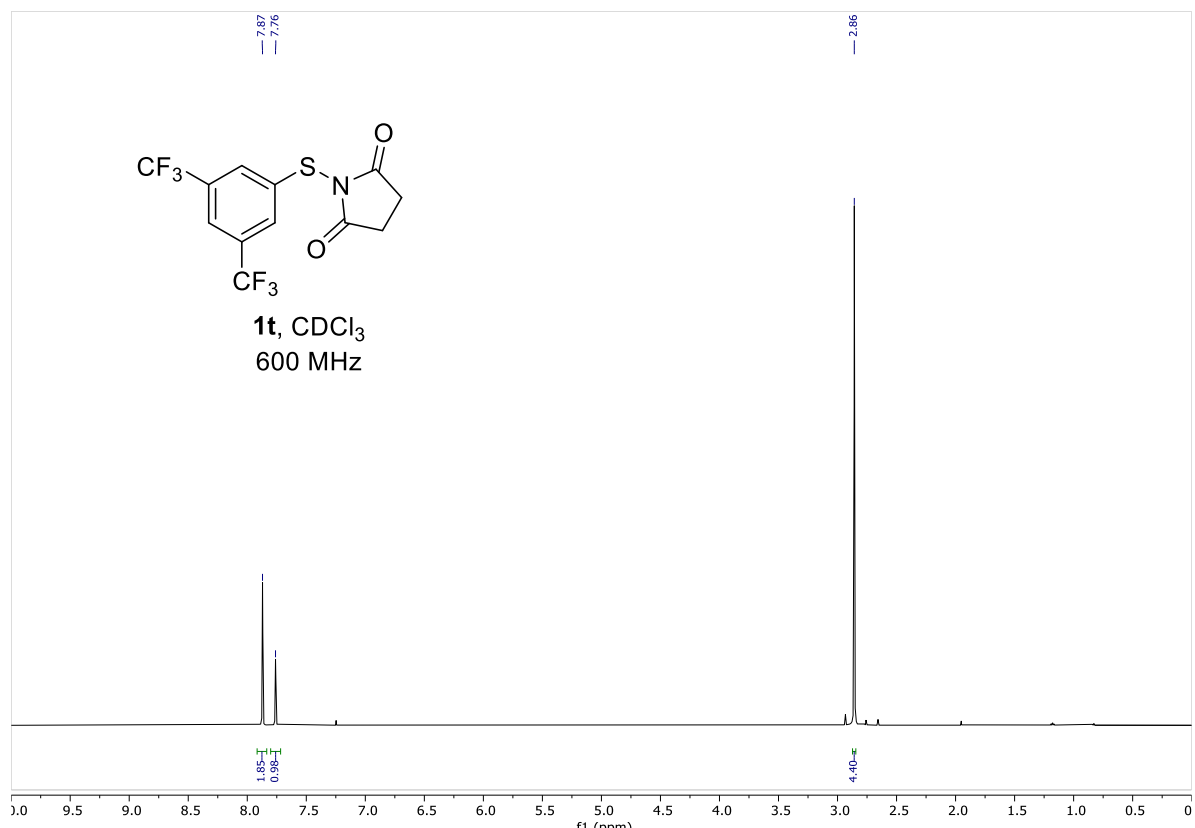
Synthesis of *N*-Acylsulfenamides from Amides and *N*-Thiosuccinimides

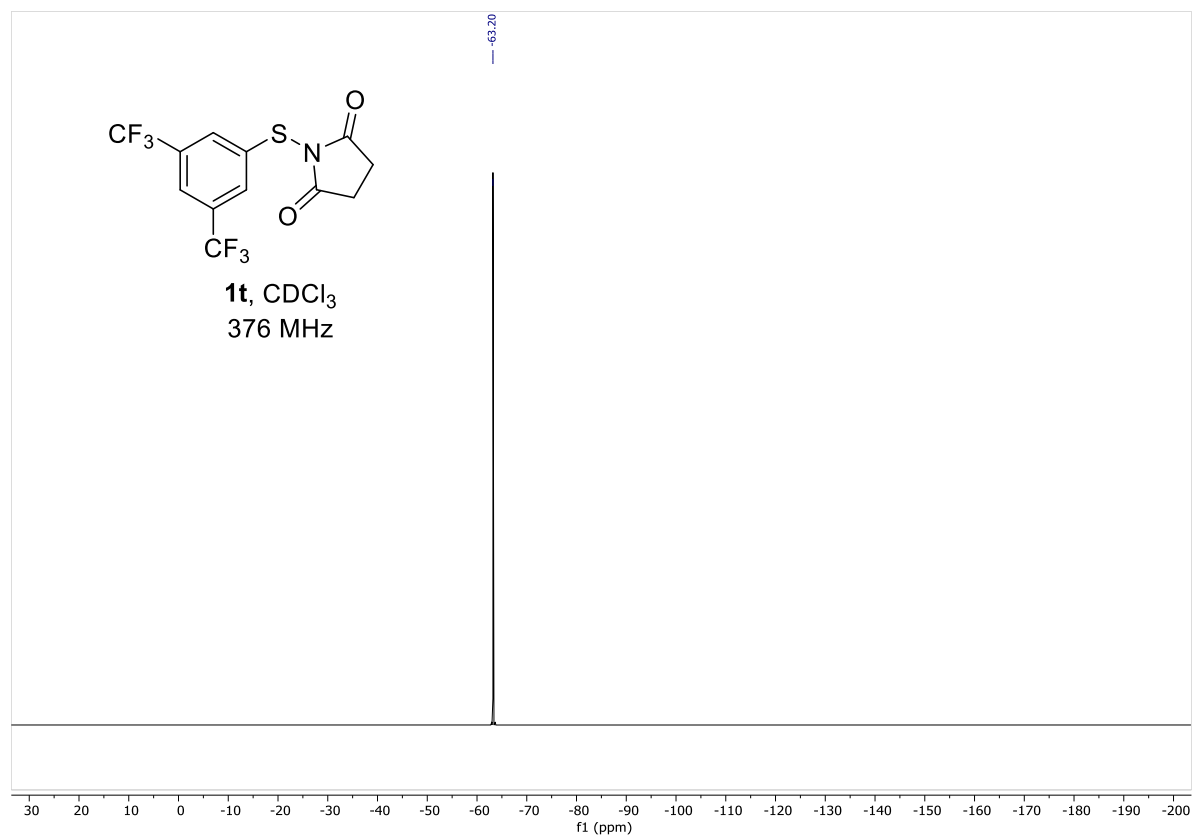
Jessica T. Liu,[†] Daniel S. Brandes,[†] Nathaniel S. Greenwood, and Jonathan A. Ellman*

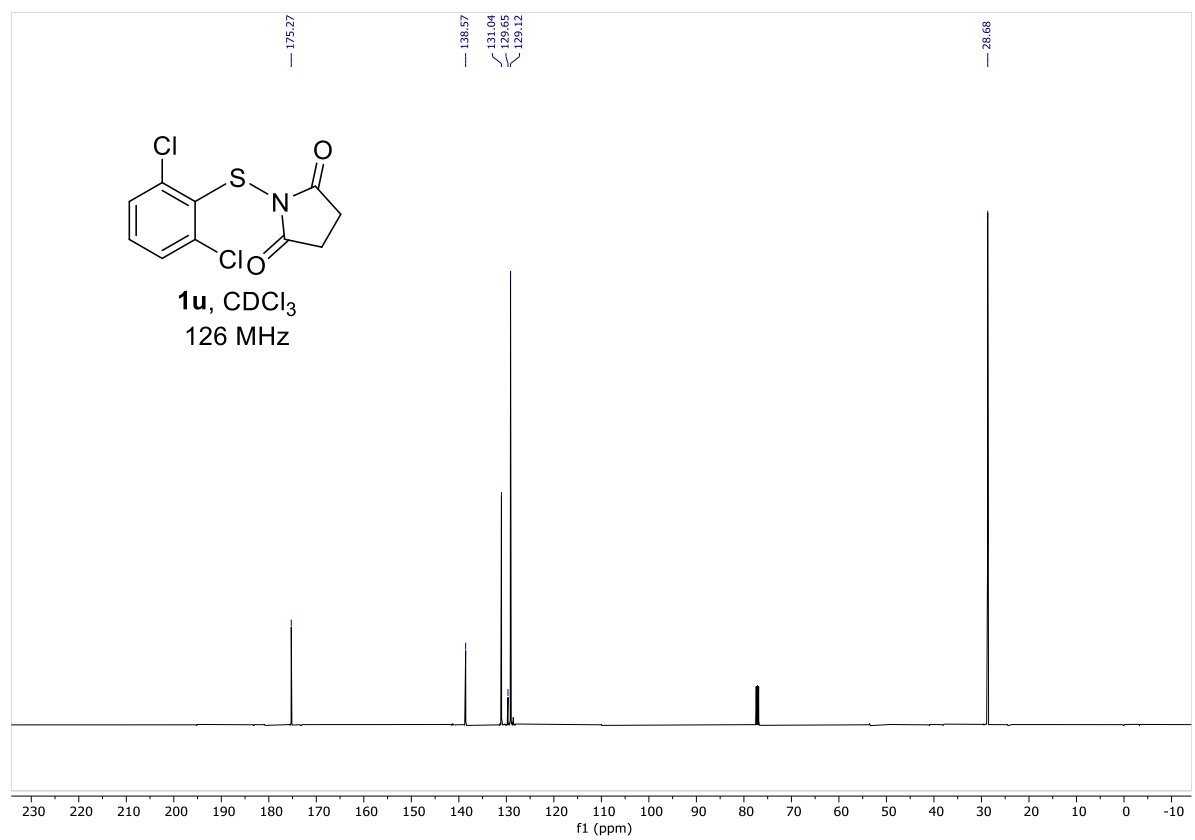
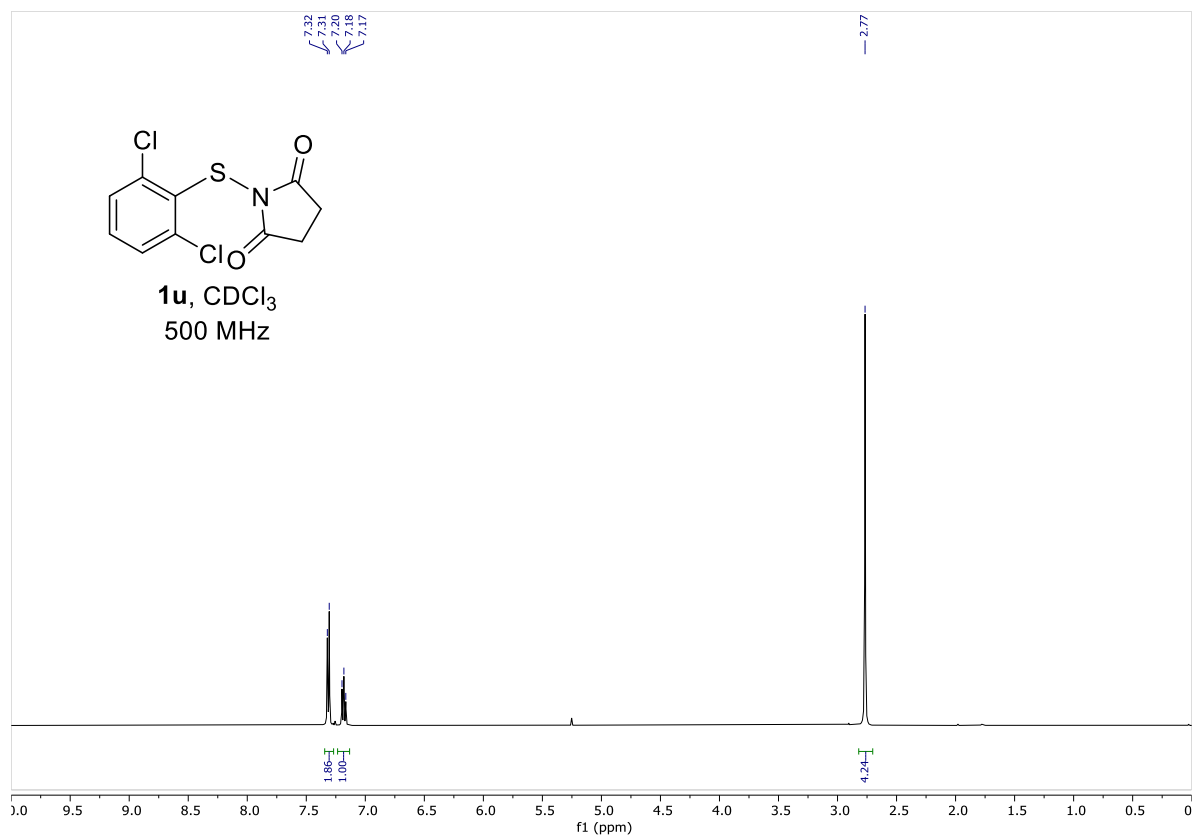


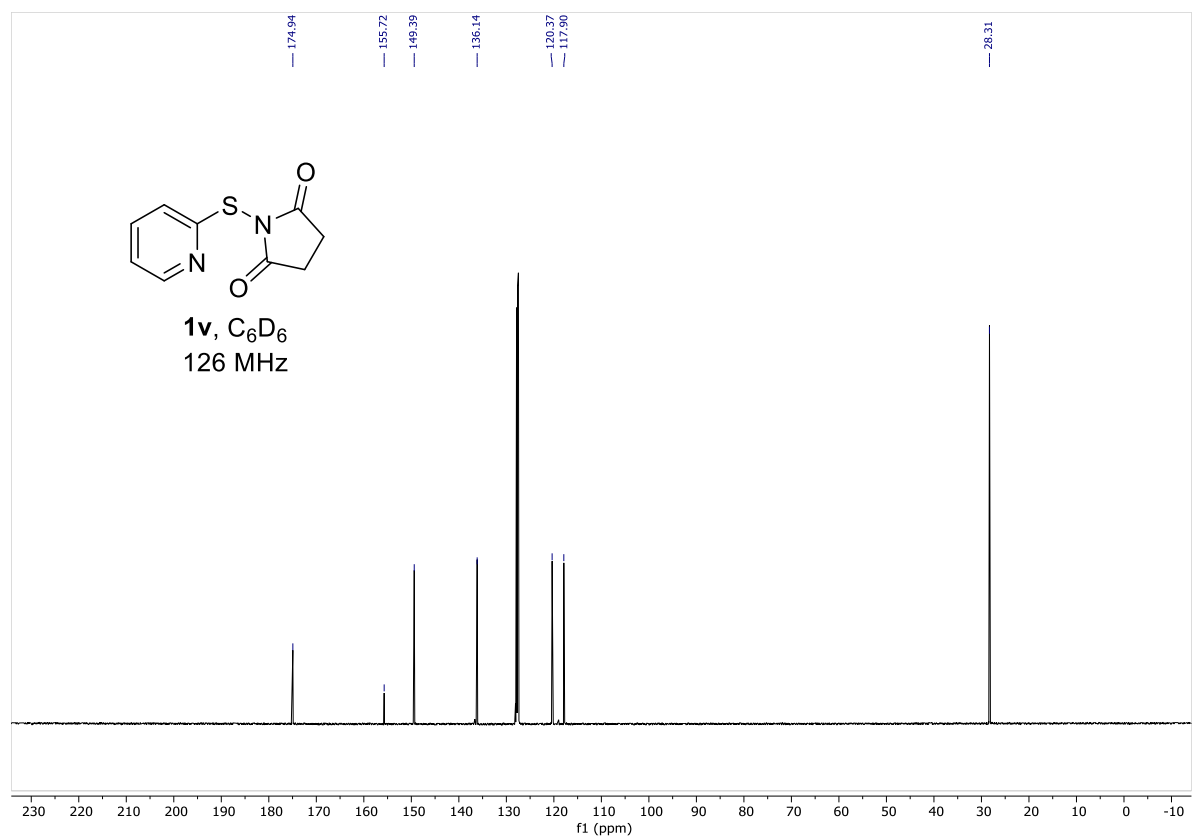
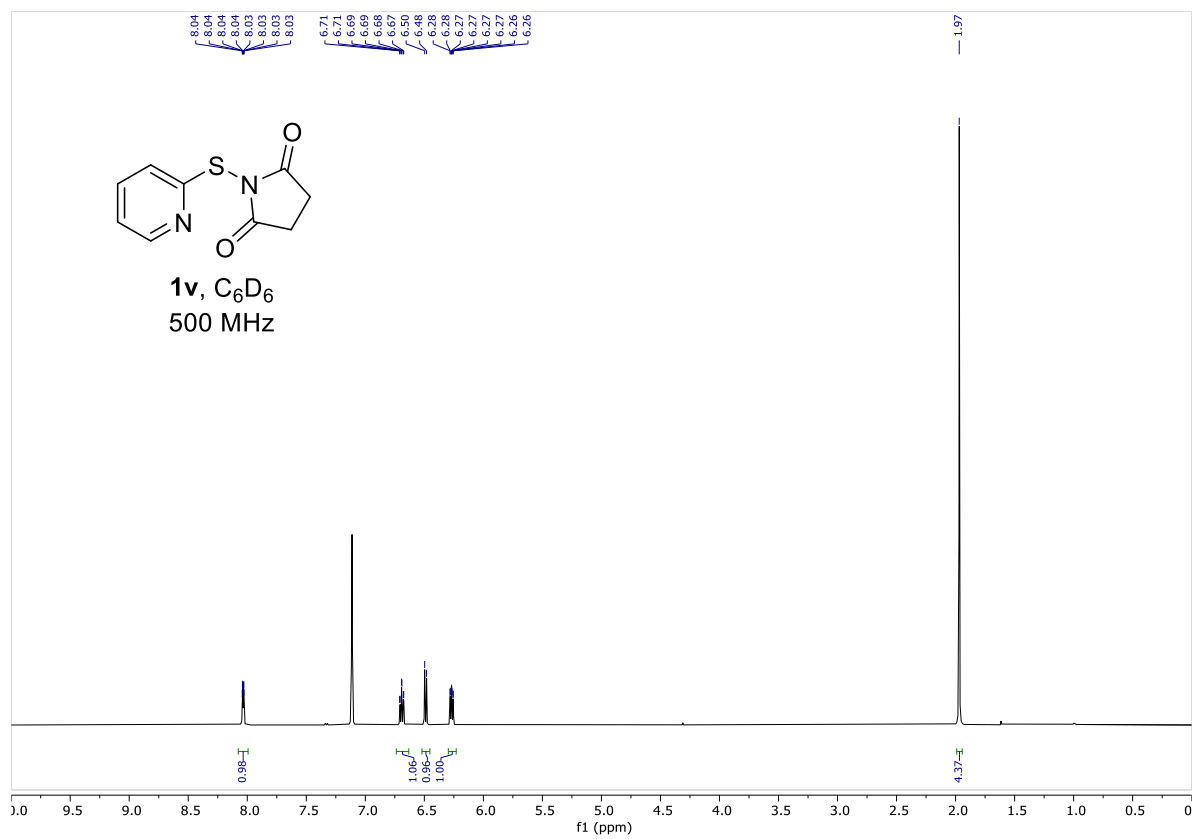


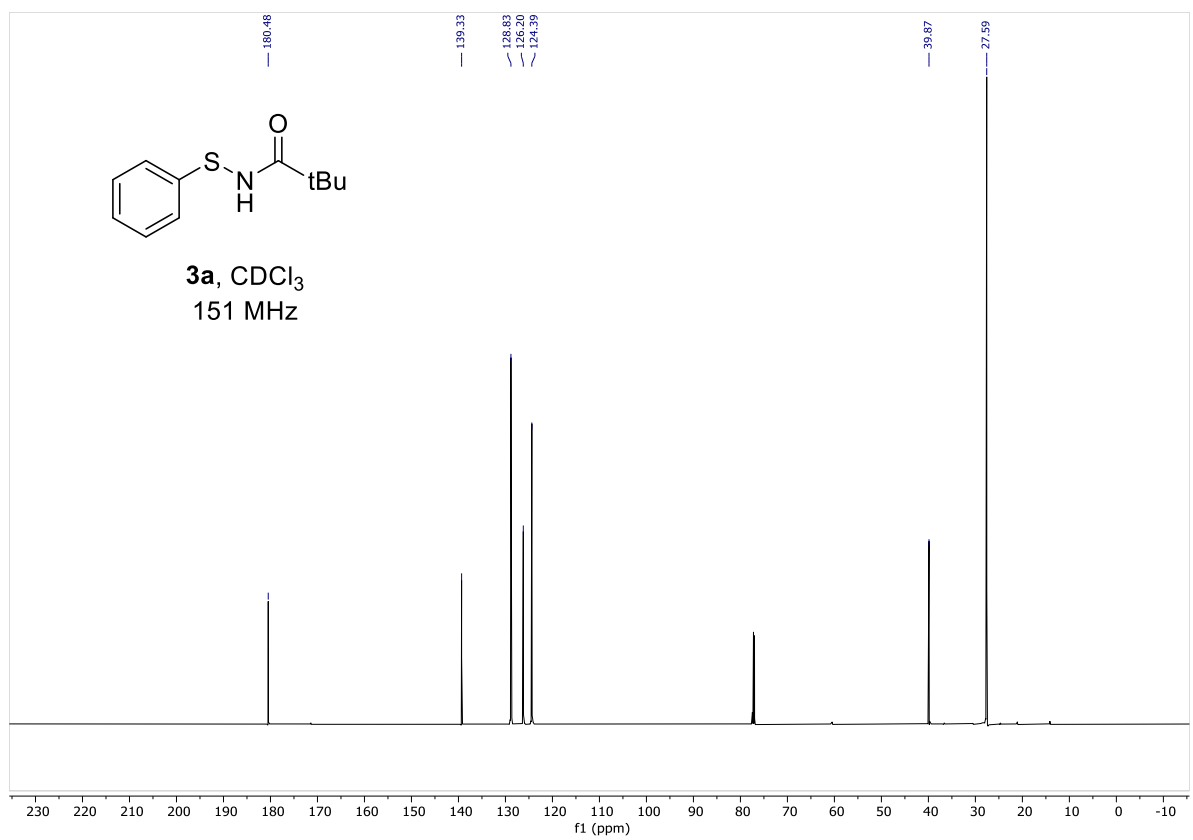
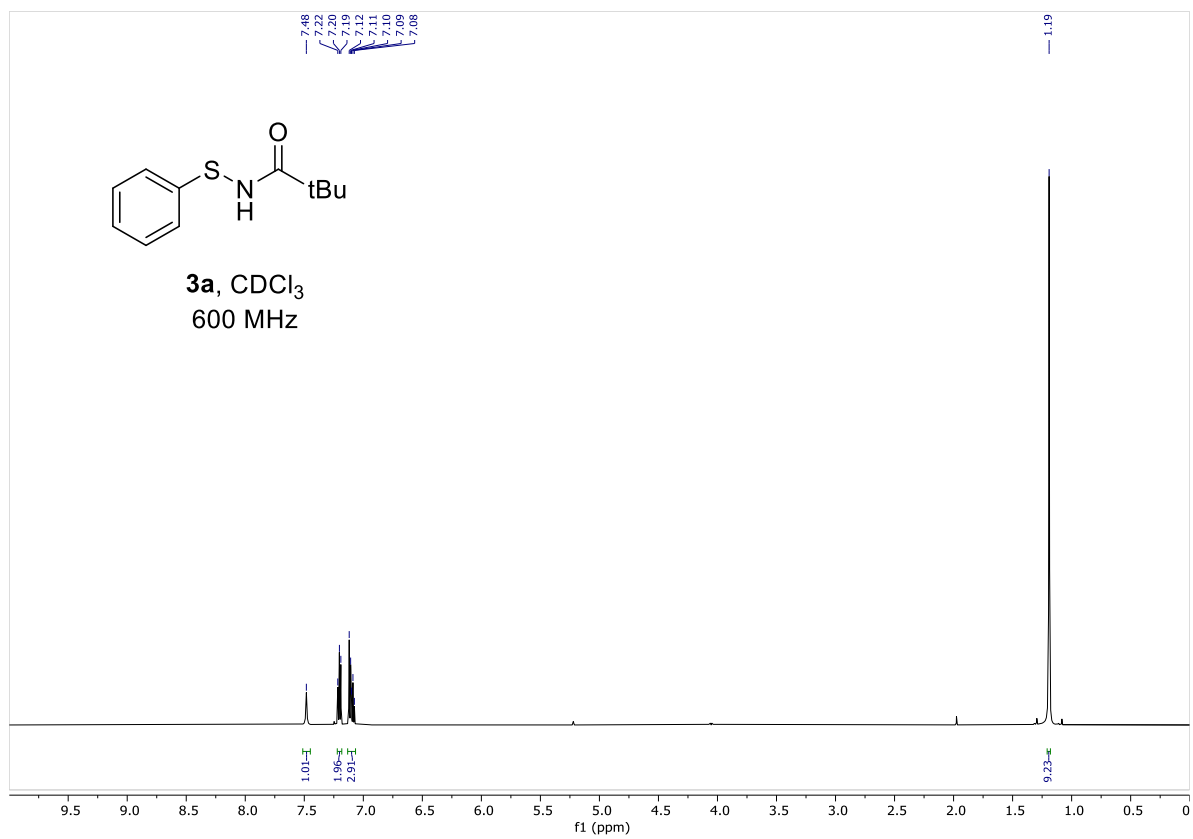


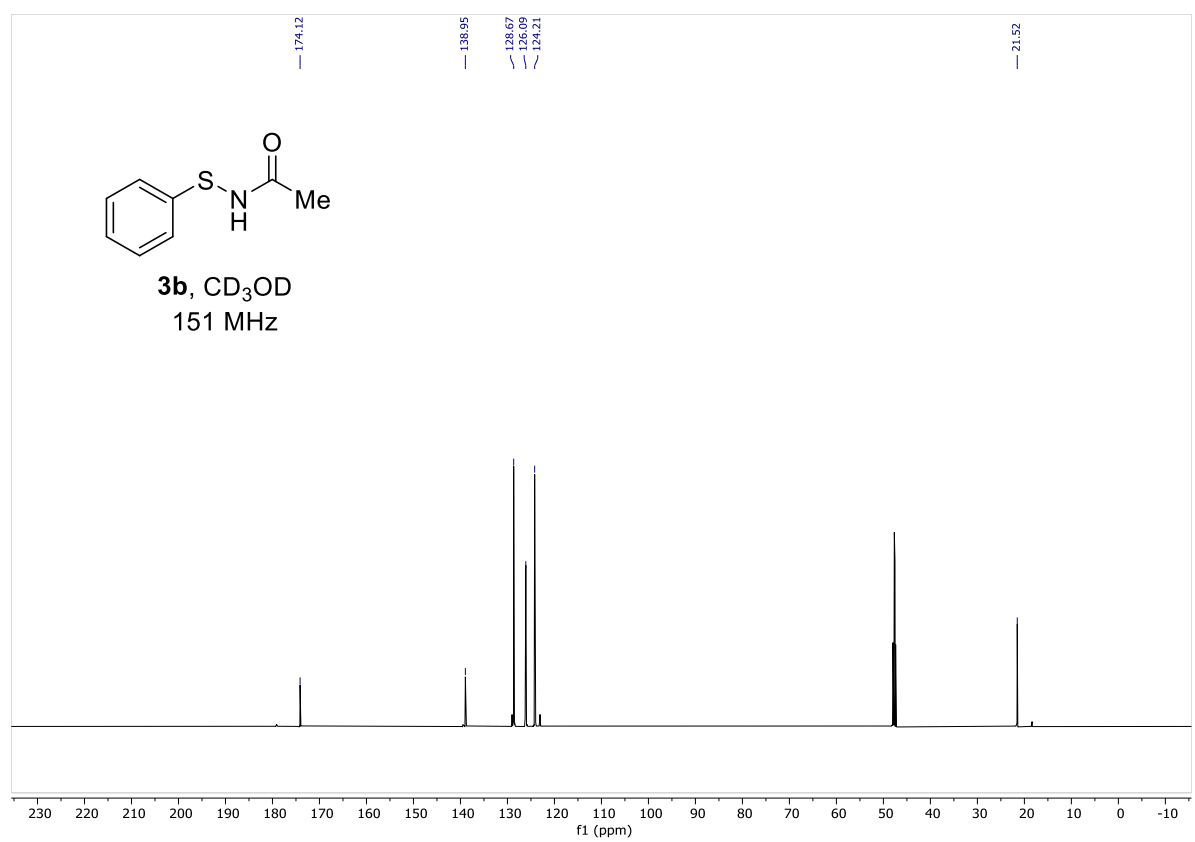
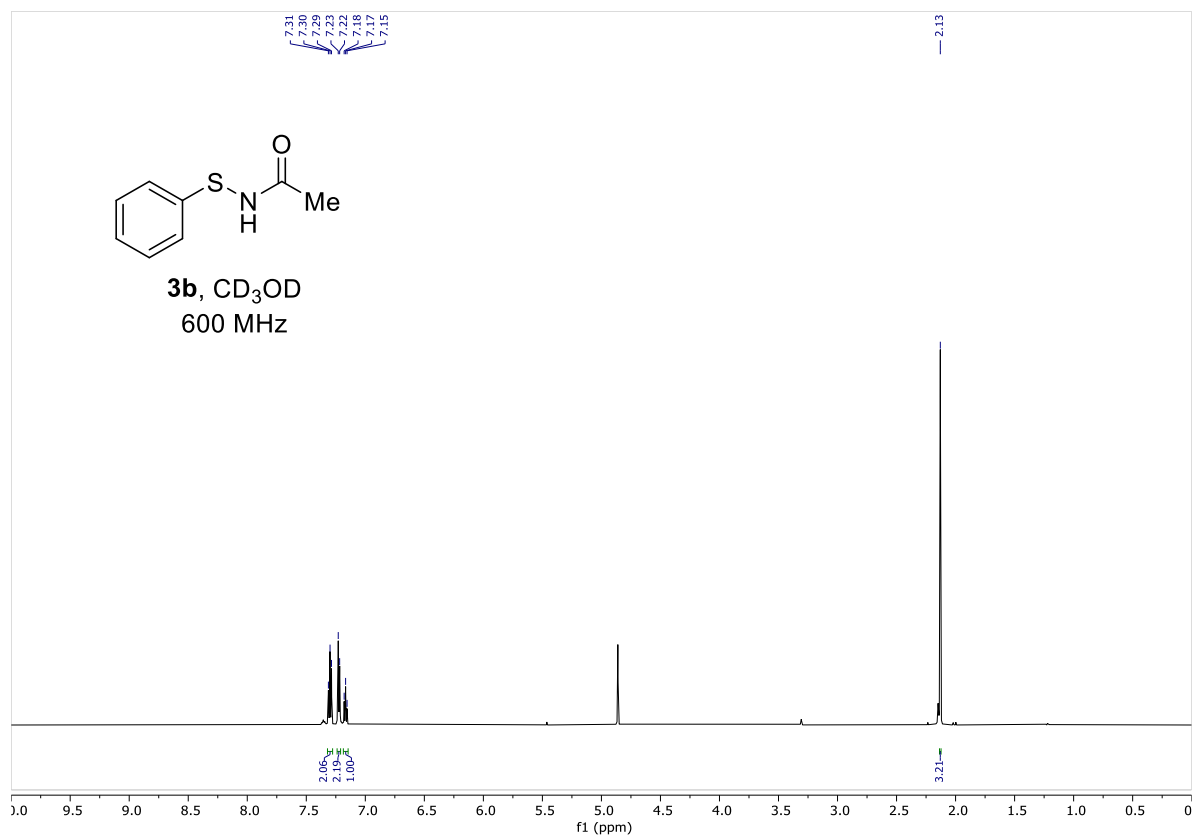


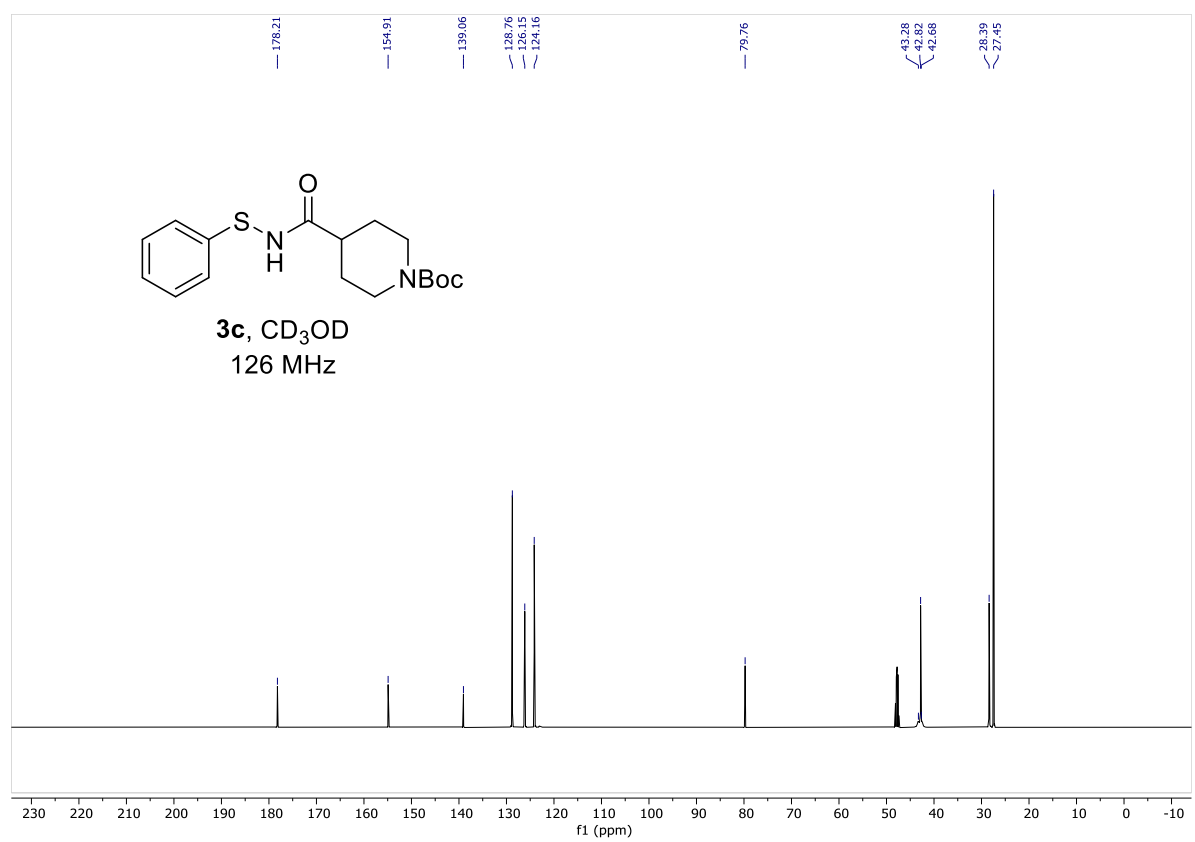
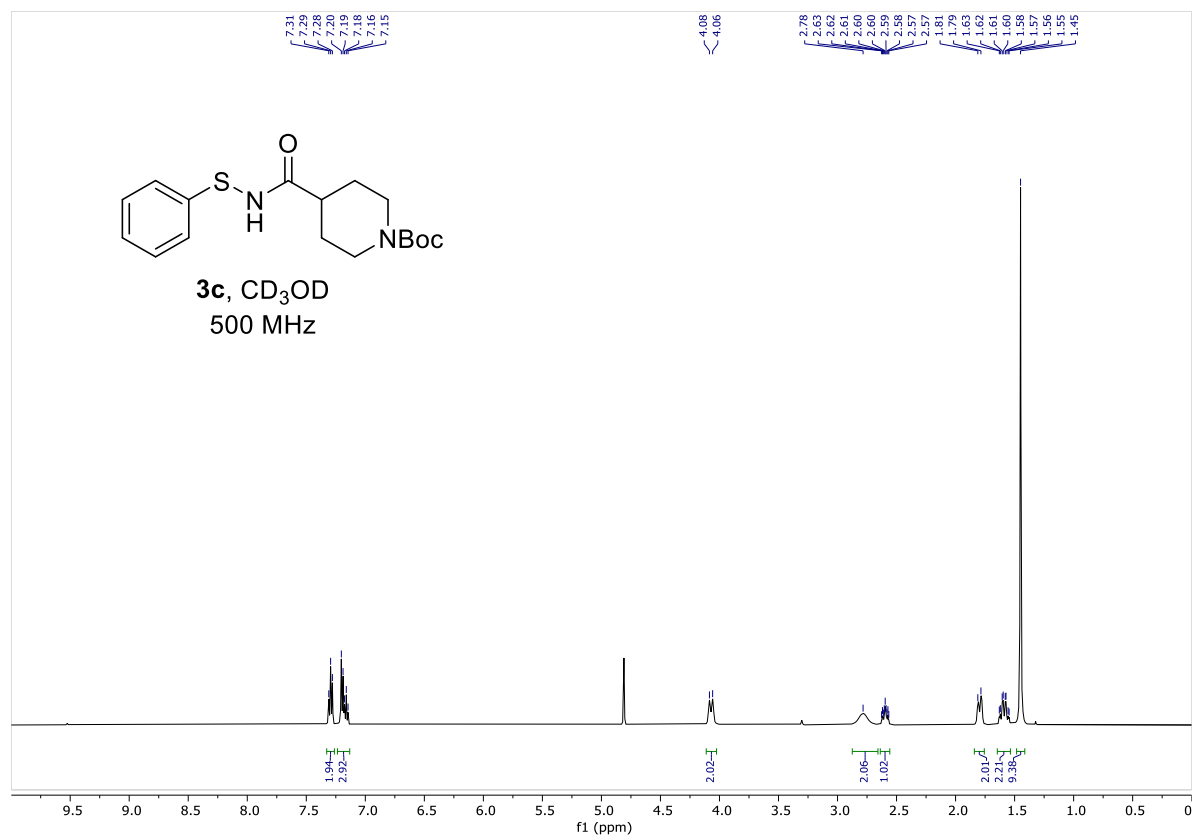


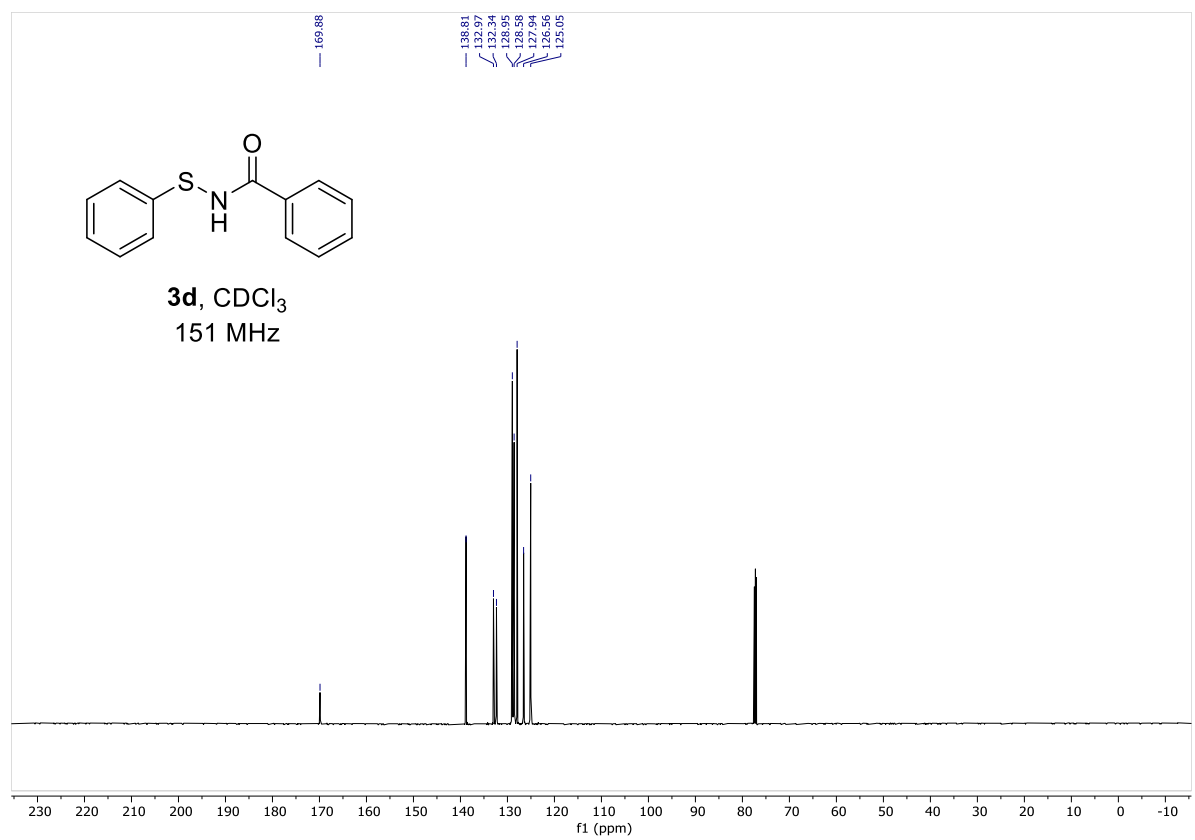
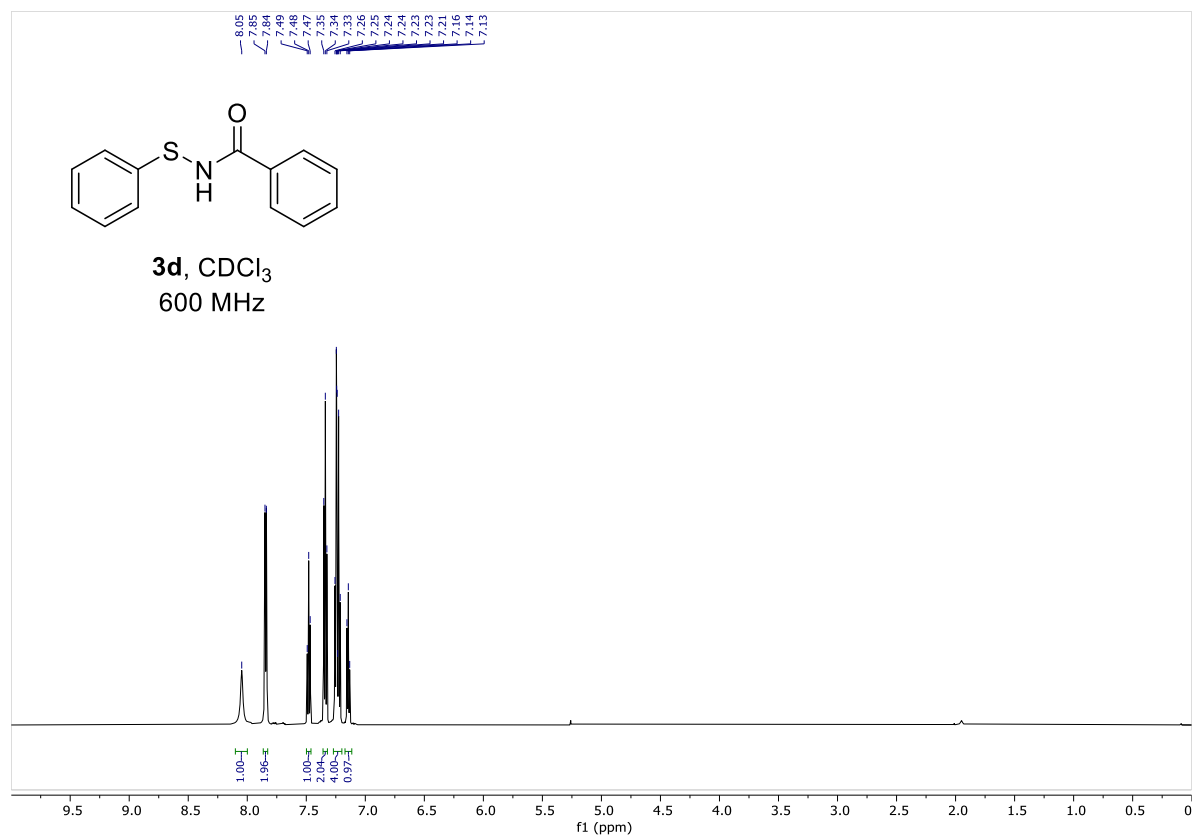


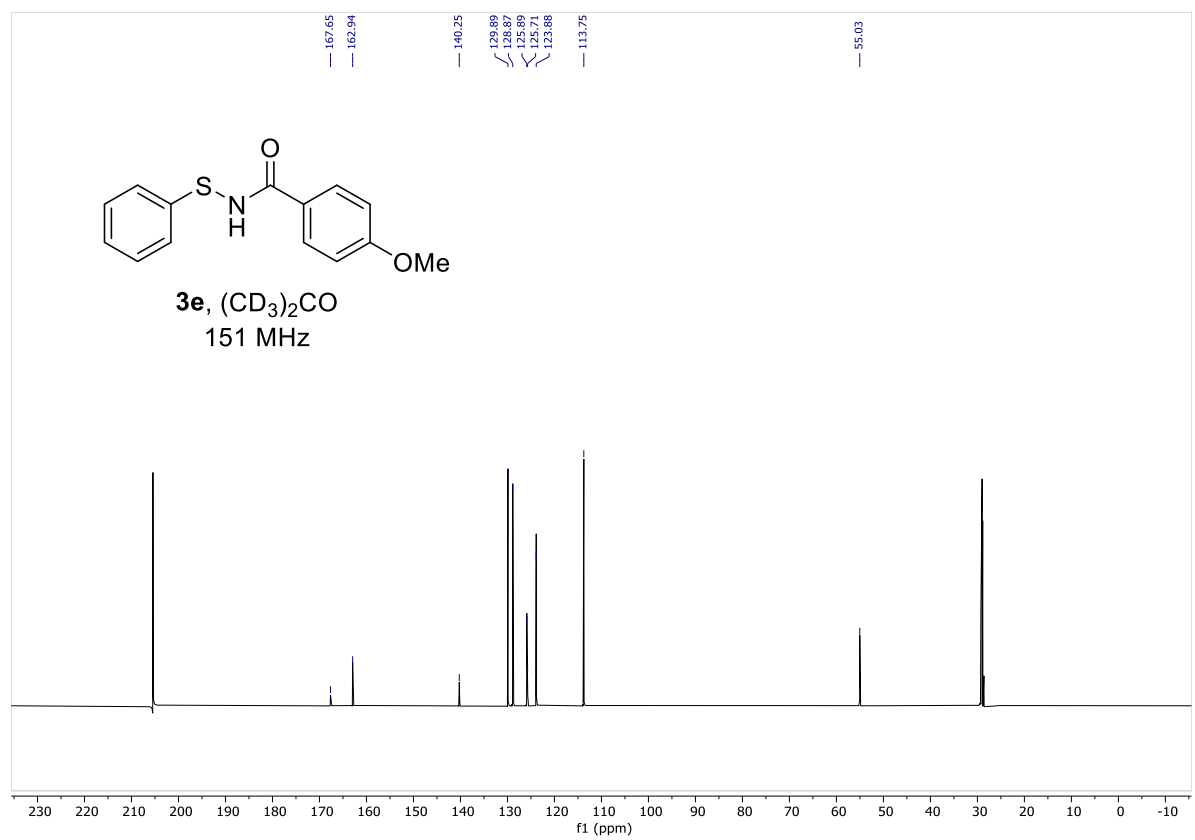
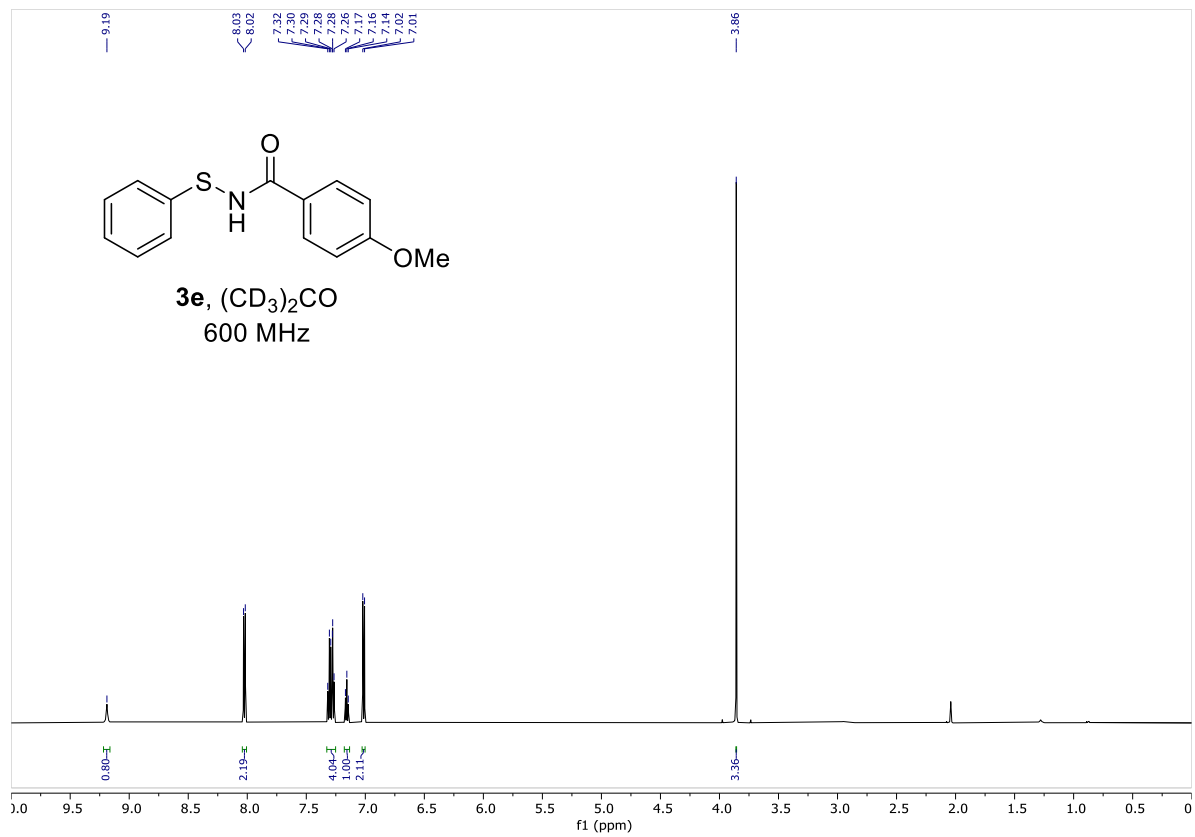


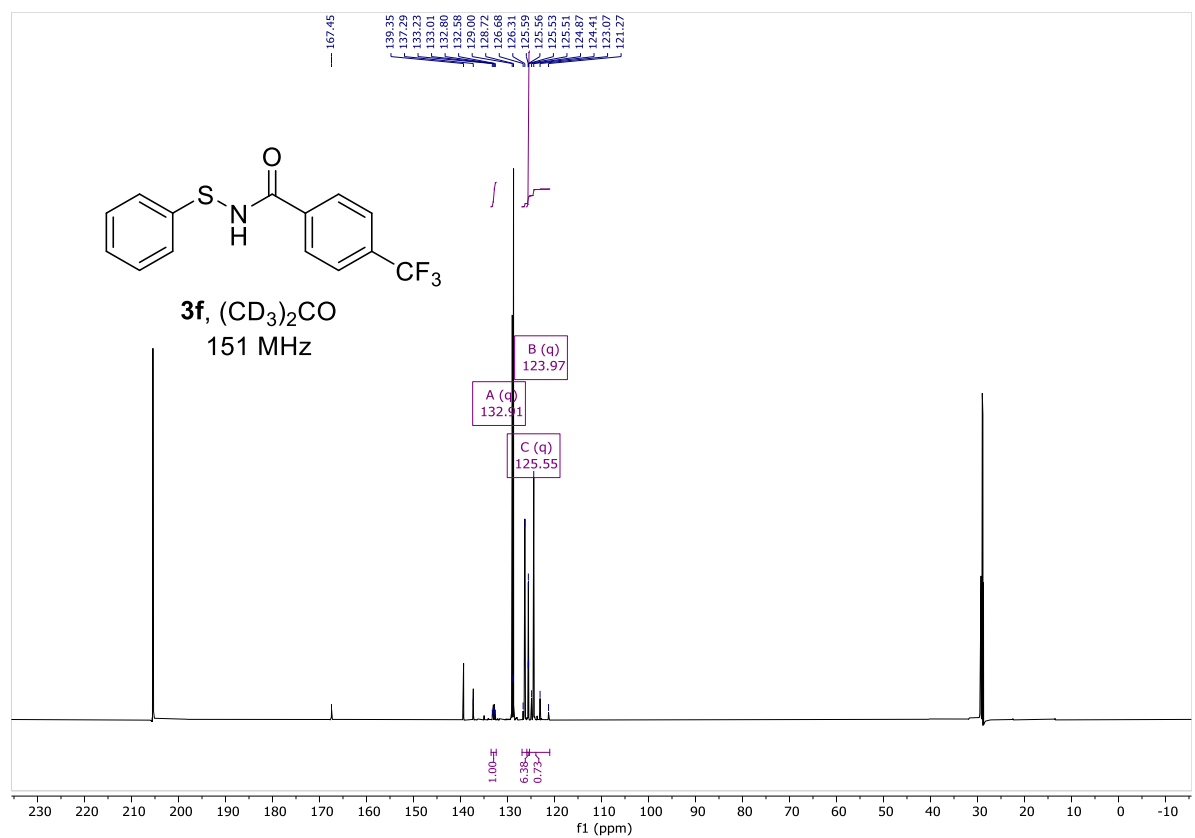
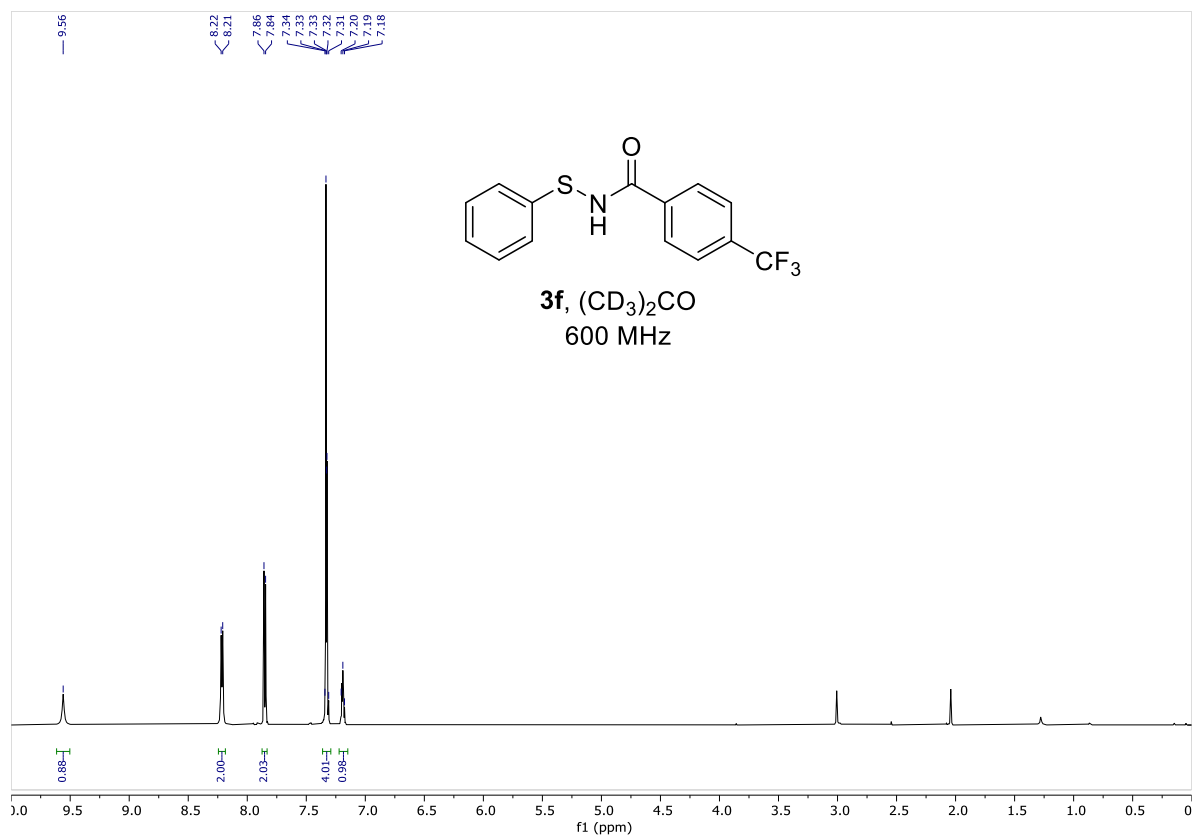


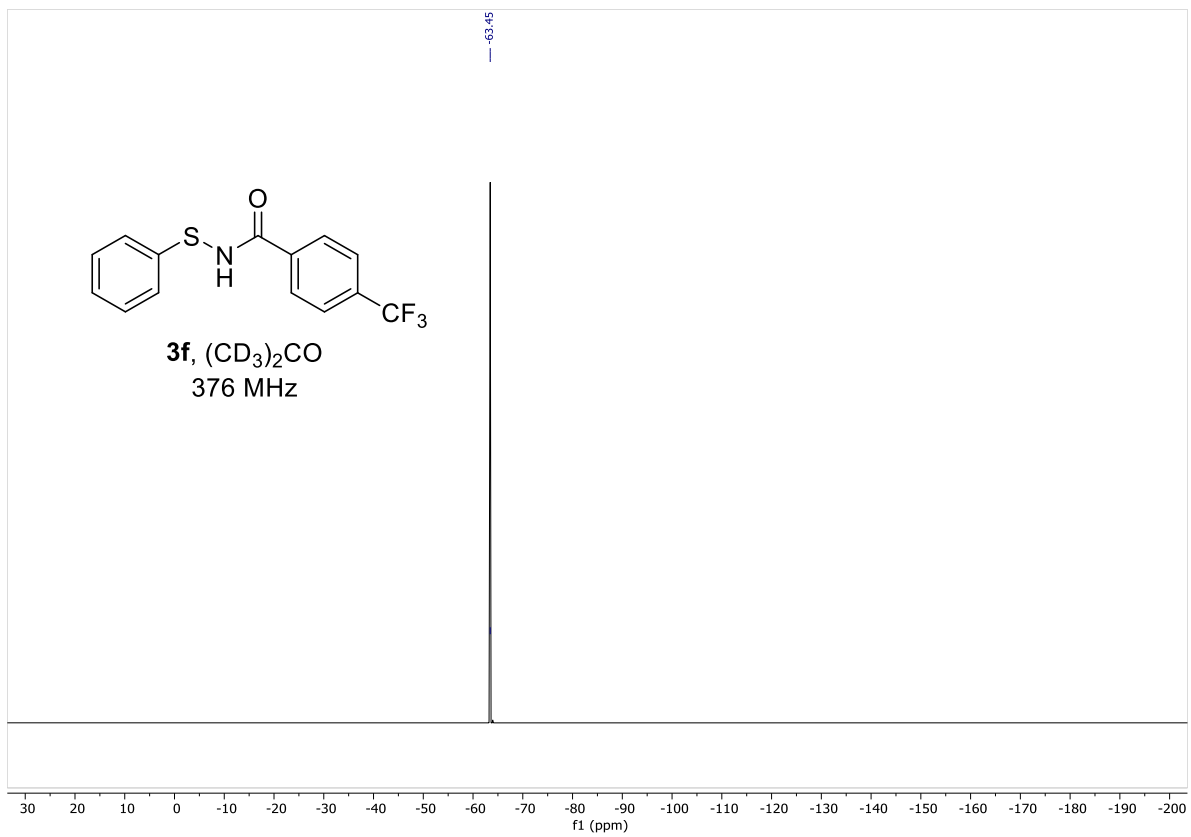


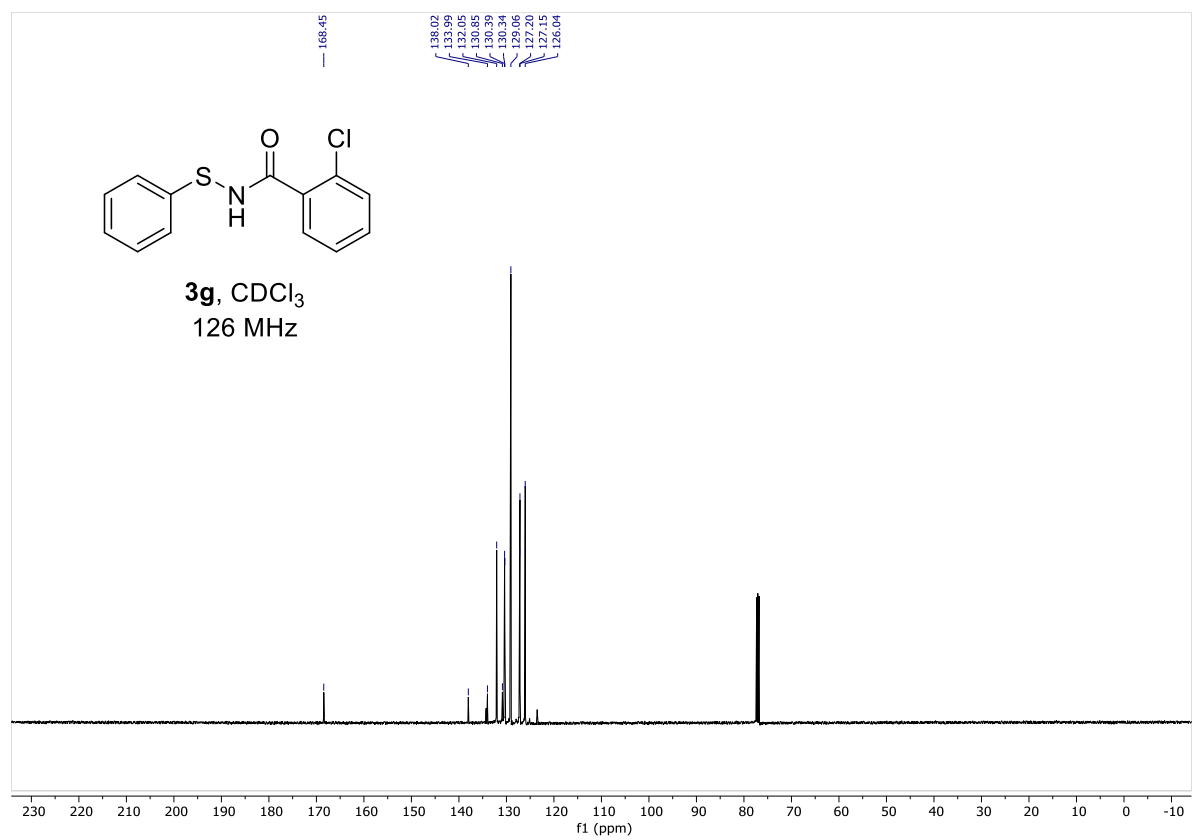
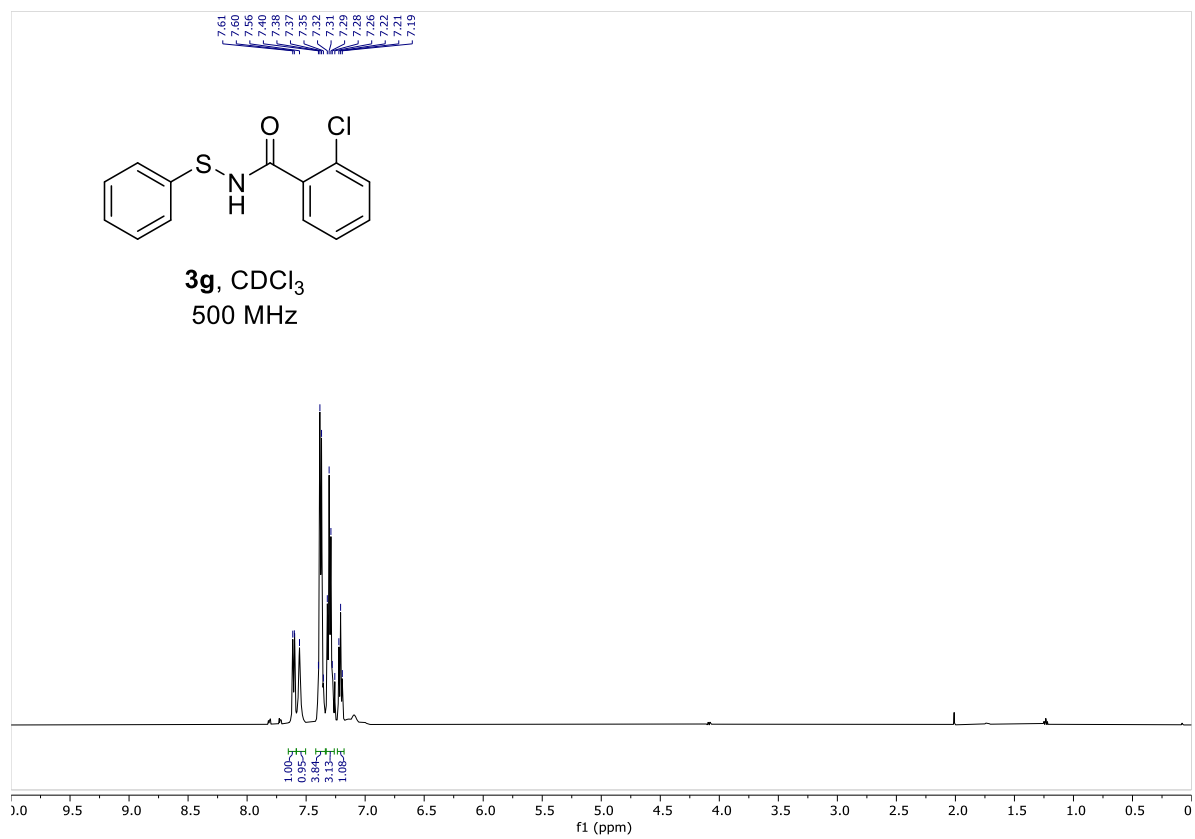


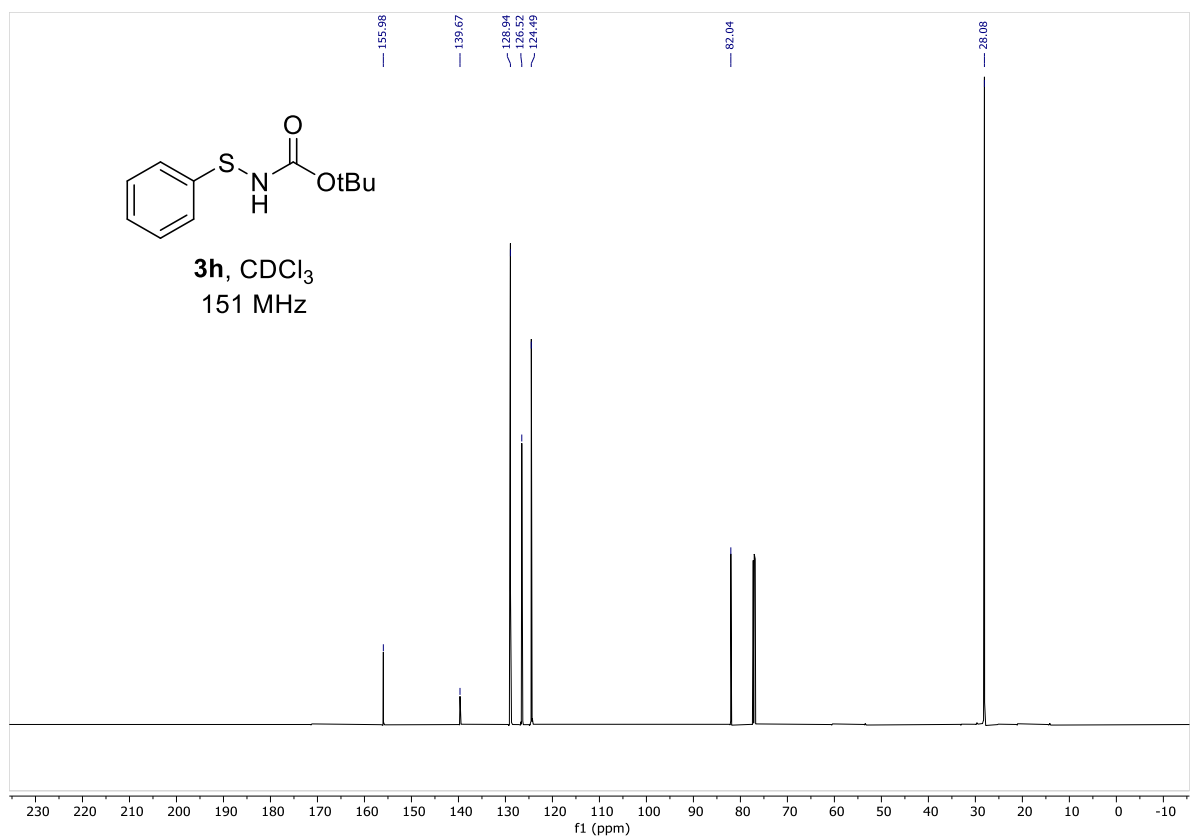
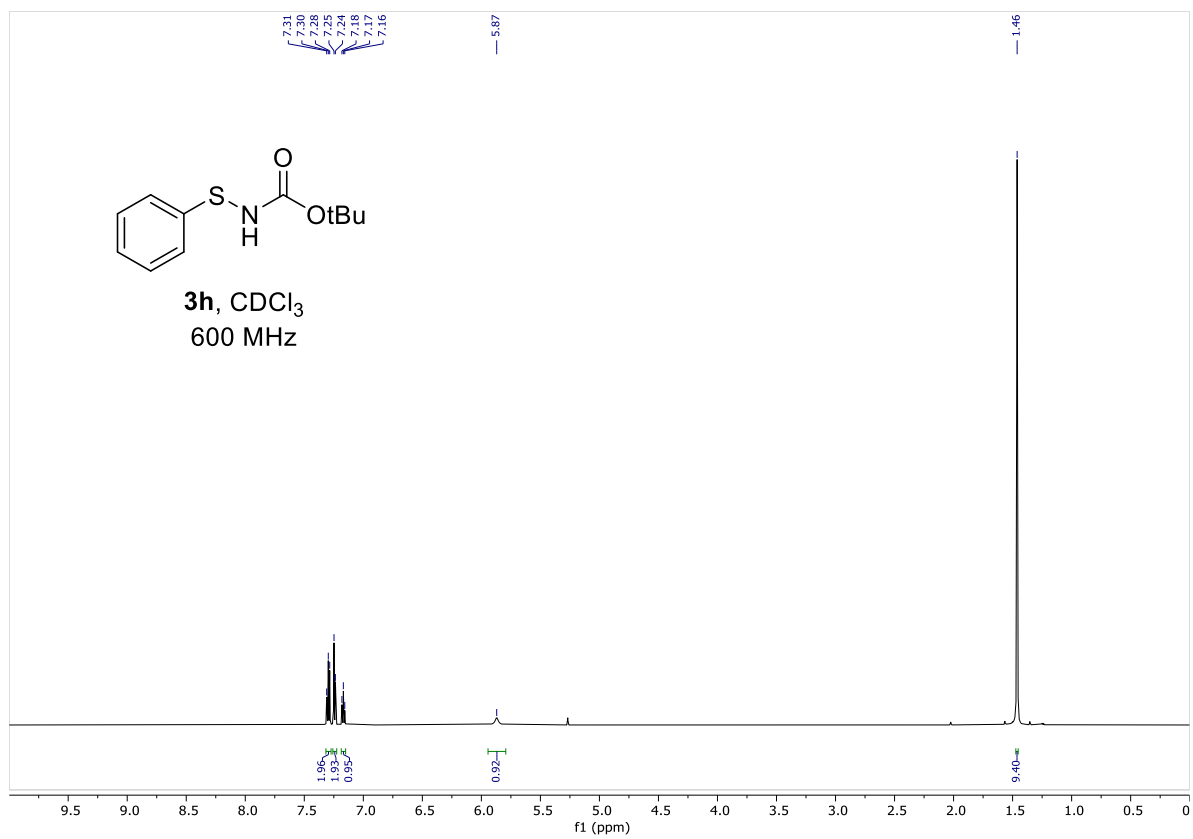


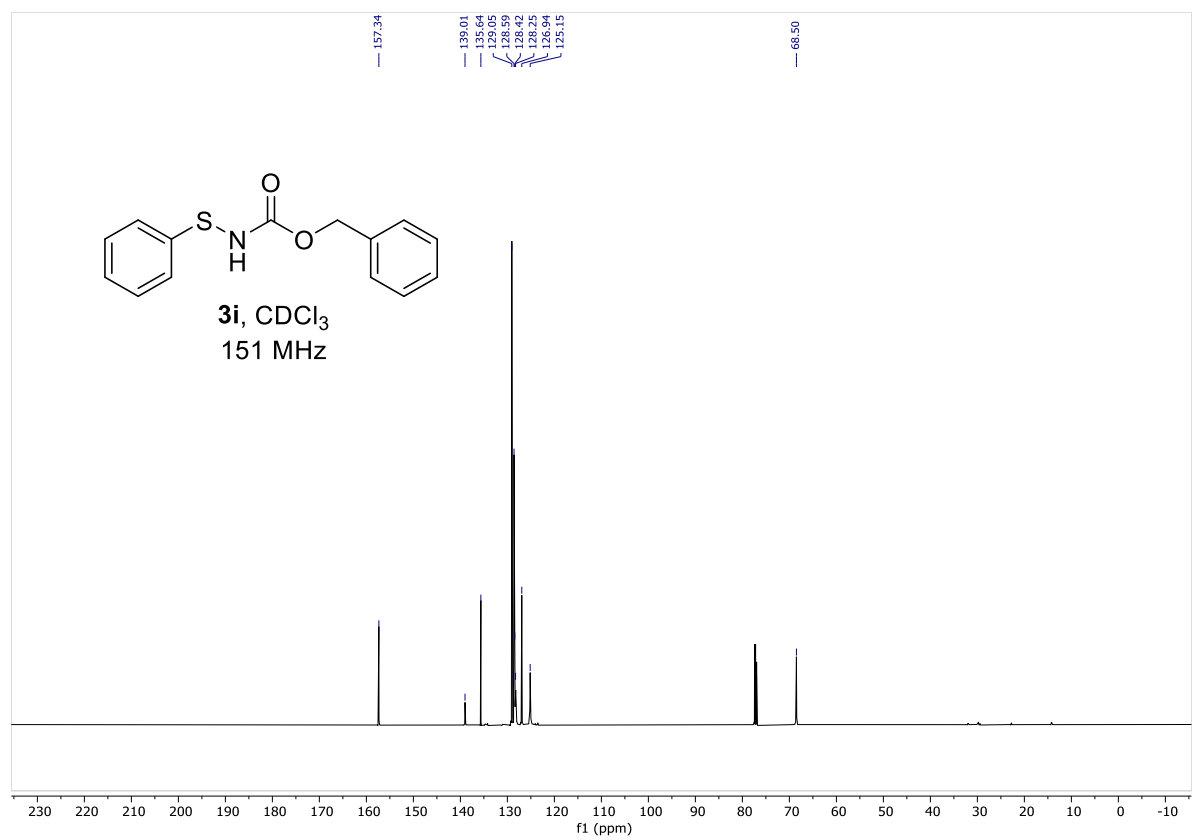
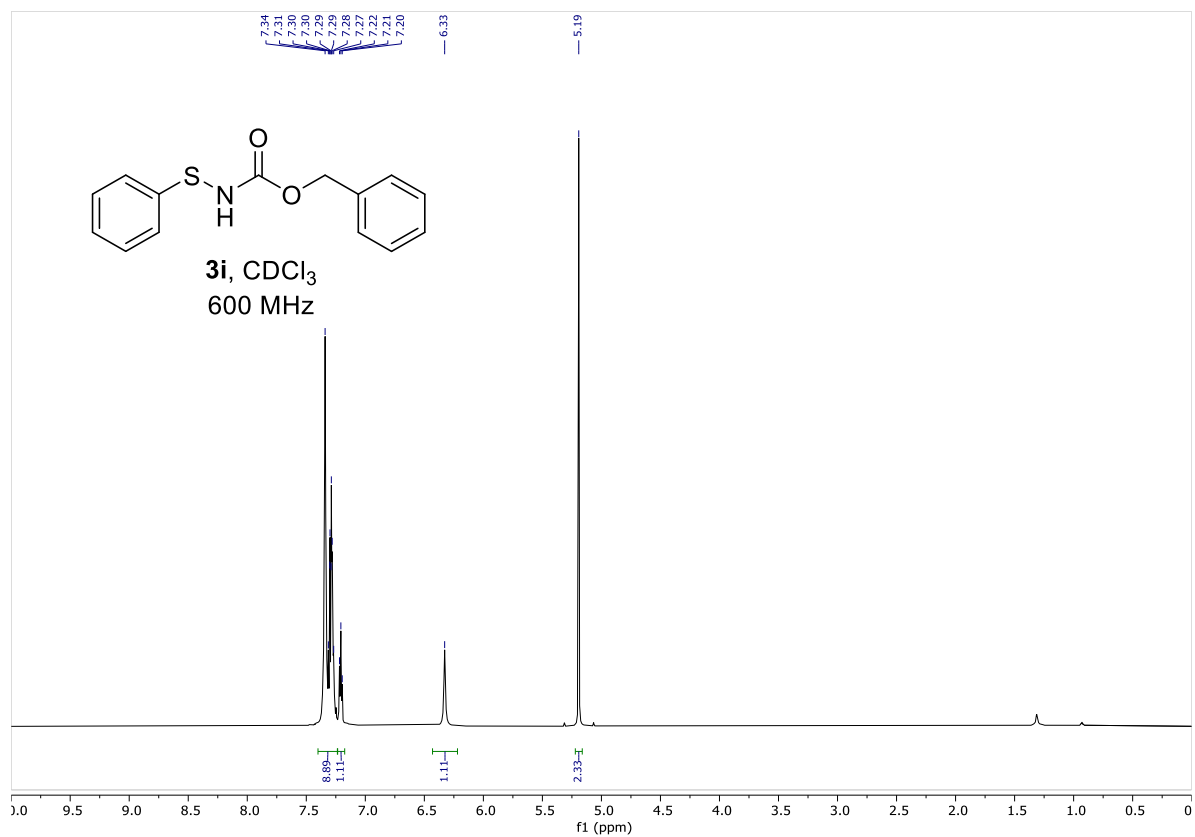


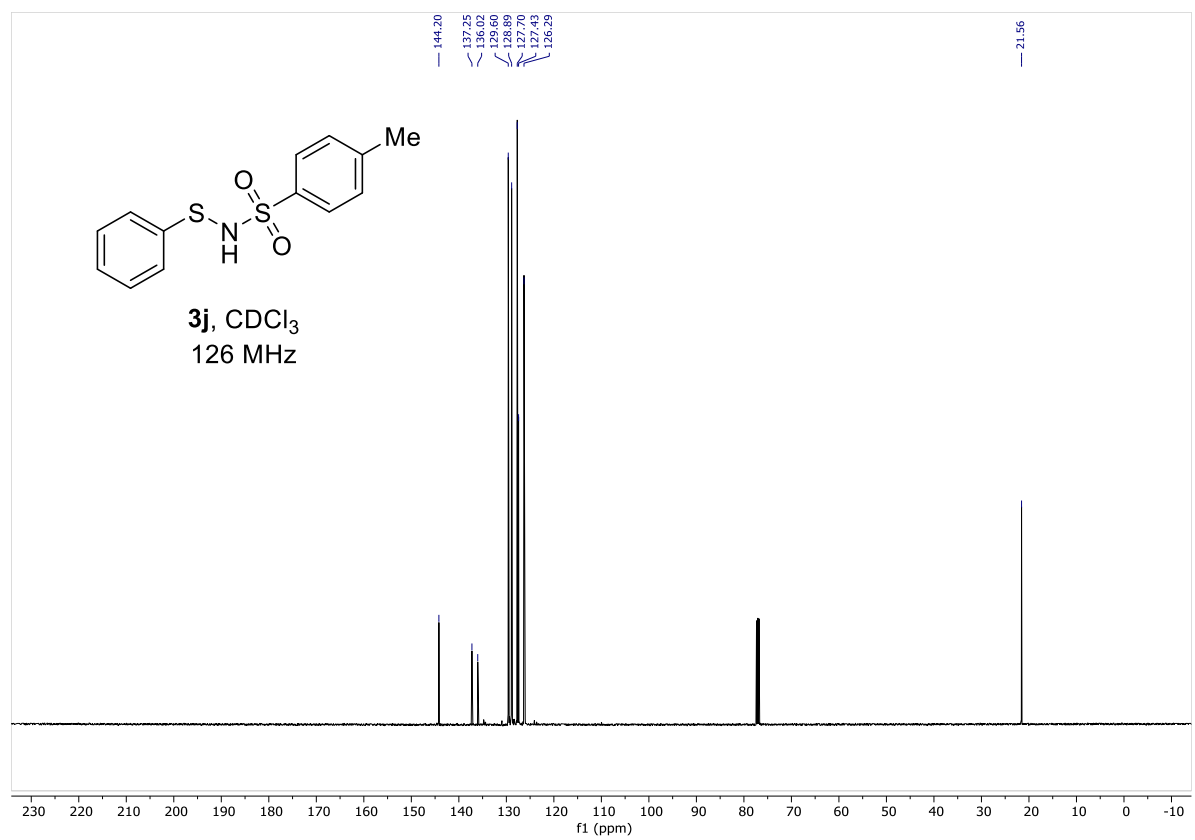
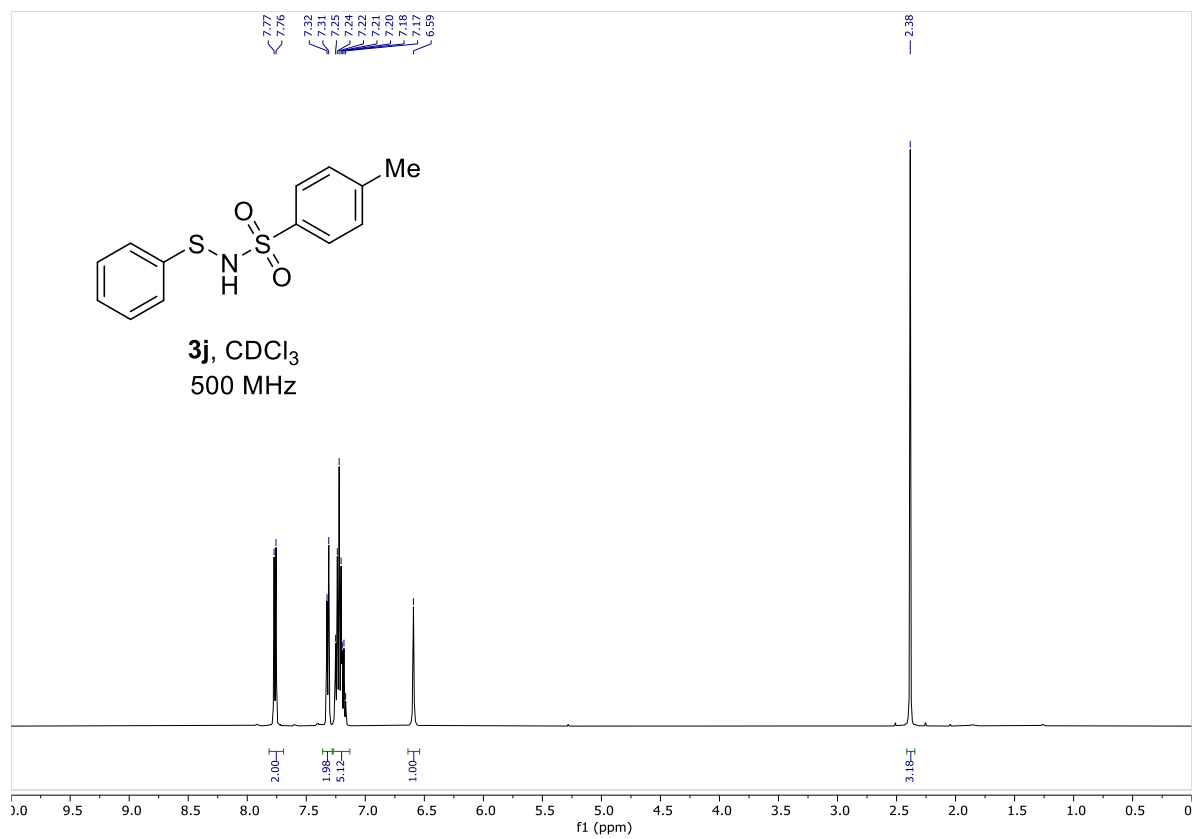


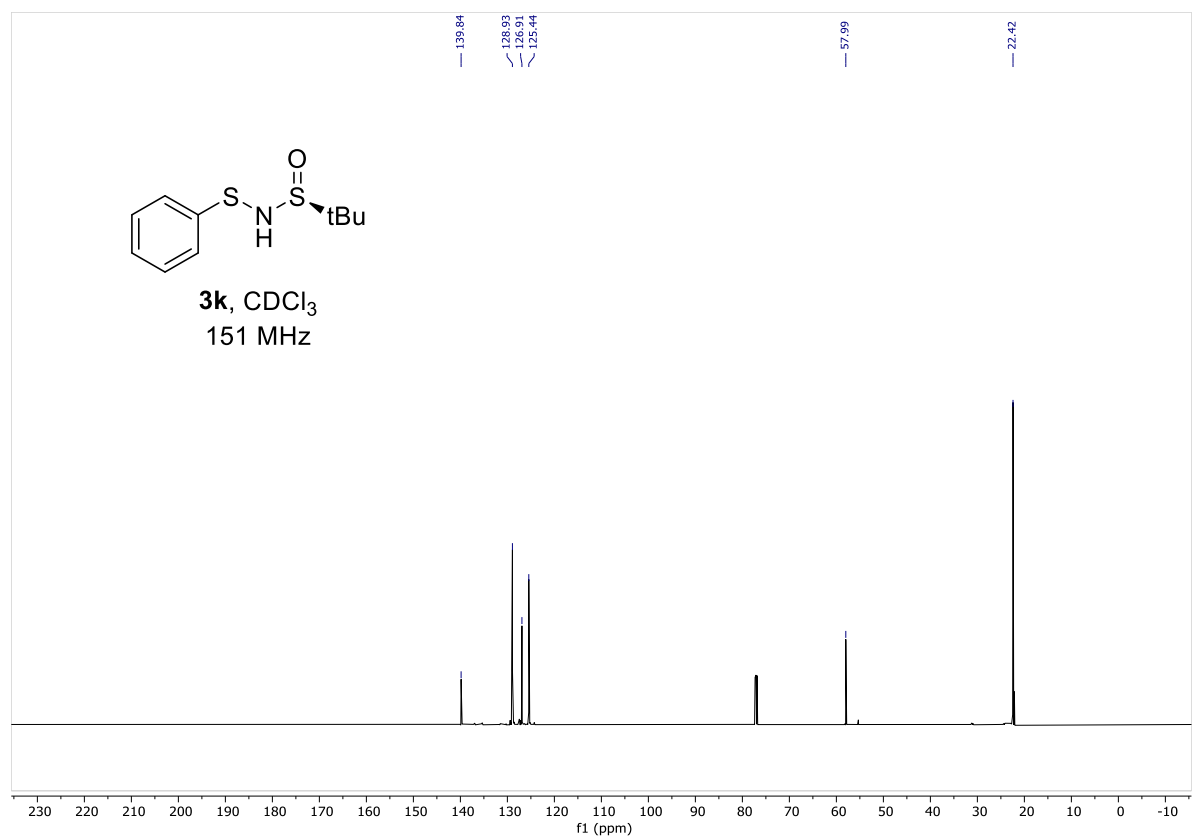
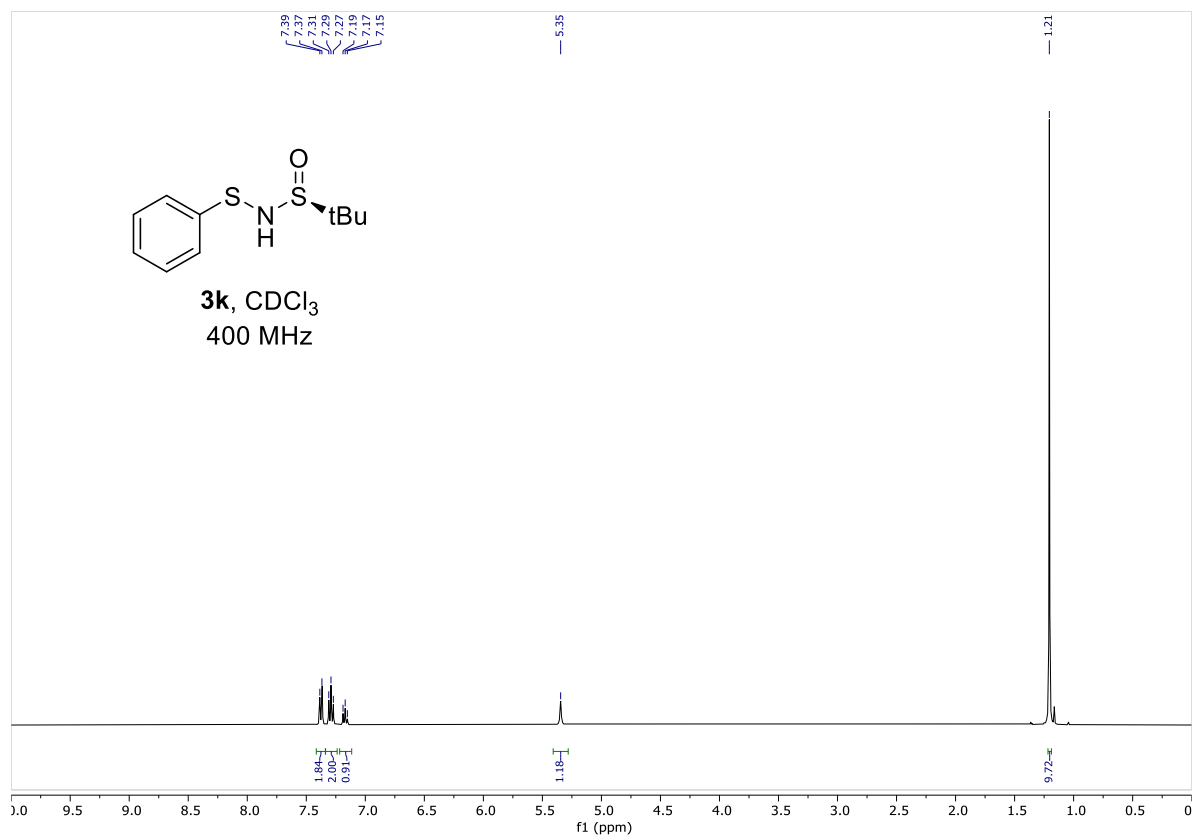






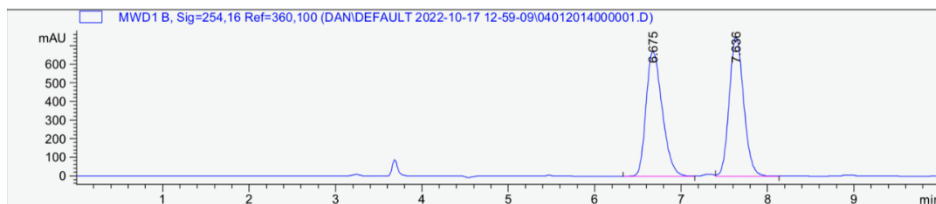






HPLC Data for Compound **3k**

Racemic-3k: Chiralpak AD-H, 90:10 hexanes/*i*PrOH, 1 mL/min

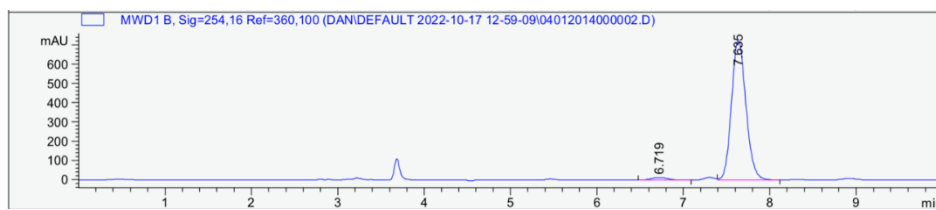


Signal 2: MWD1 B, Sig=254,16 Ref=360,100

| Peak # | RetTime [min] | Type | Width [min] | Area [mAU*s] | Height [mAU] | Area % |
|--------|---------------|------|-------------|--------------|--------------|---------|
| 1 | 6.675 | BV | 0.2019 | 8741.13086 | 671.41101 | 50.1361 |
| 2 | 7.636 | VV | 0.1802 | 8693.67188 | 744.82880 | 49.8639 |

Totals : 1.74348e4 1416.23981

(S)-3k: Chiralpak AD-H, 90:10 hexanes/*i*PrOH, 1 mL/min

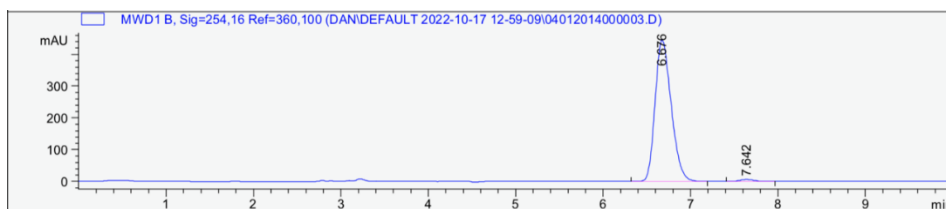


Signal 2: MWD1 B, Sig=254,16 Ref=360,100

| Peak # | RetTime [min] | Type | Width [min] | Area [mAU*s] | Height [mAU] | Area % |
|--------|---------------|------|-------------|--------------|--------------|---------|
| 1 | 6.719 | VB | 0.2021 | 174.26126 | 13.54201 | 2.0336 |
| 2 | 7.635 | VV | 0.1791 | 8395.01367 | 725.10547 | 97.9664 |

Totals : 8569.27493 738.64748

(R)-3k: Chiralpak AD-H, 90:10 hexanes/*i*PrOH, 1 mL/min



Signal 2: MWD1 B, Sig=254,16 Ref=360,100

| Peak # | RetTime [min] | Type | Width [min] | Area [mAU*s] | Height [mAU] | Area % |
|--------|---------------|------|-------------|--------------|--------------|---------|
| 1 | 6.676 | BV | 0.1977 | 5700.71387 | 444.29608 | 98.6803 |
| 2 | 7.642 | VB | 0.1771 | 76.24088 | 6.68160 | 1.3197 |

Totals : 5776.95474 450.97768

