

Supporting Information
for DOI: 10.1055/s-0036-1590928
© Georg Thieme Verlag KG Stuttgart · New York 2017

Supplementary Information

Organocatalytic enantioselective vinylogous Henry reaction of 3,5-dimethyl-4-nitroisoxazole with trifluoromethyl ketones

Ehsan Jafari,^a Dipti Sankar Kundu,^a Pankaj Chauhan,^a V. P. Reddy Gajulapalli,^a Carolina von Essen,^b Kari Rissanen,^b and Dieter Enders^{*a}

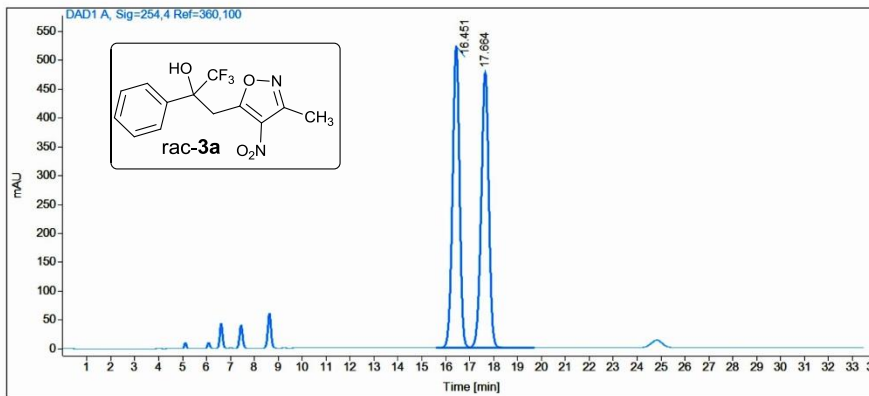
[†] Institute of Organic Chemistry, RWTH Aachen University, Landoltweg 1, 52074 Aachen, Germany, e-mail: enders@rwth-aachen.de

[‡] Department of Chemistry, Nanoscience Center, University of Jyväskylä, 40014 JYU, Finland

Data file: C:\SNOOPY\EH14.D
Description: Mobile phase: n-Heptane/iPrOH 9:1;
 The sample is solved in DCM/MP
Injection date: 9/21/2016 7:17:52 AM
Acq. Analysis method: CHIRALPAKIARNP.M

Column: Chiralpak IA, (250 x 4,6) mm, 5µ, SN: IA00CE-RC036

Pressure at start: 38 bar **Start flow:** 0.700 ml/min **Column oven:** 30 °C



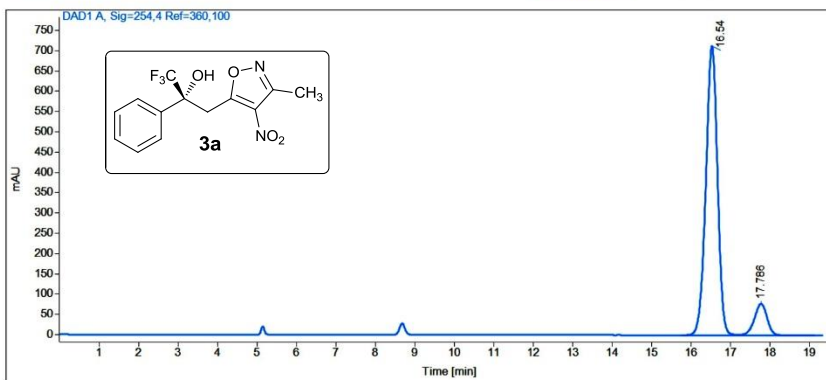
Name	RT [min]	Type	Area%	Area	Height	Width [min]
EH-14	16.45	BV	50.09	10566.69	523.25	0.31
	17.66	VB	49.91	10530.78	478.16	0.34
	Sum		100.00	21097.46		

Data file: C:\SNOOPY\EH32 IA.D
Description: Mobile phase: n-Heptane/i-PrOH 9:1;
 The sample is solved in DCM/MP

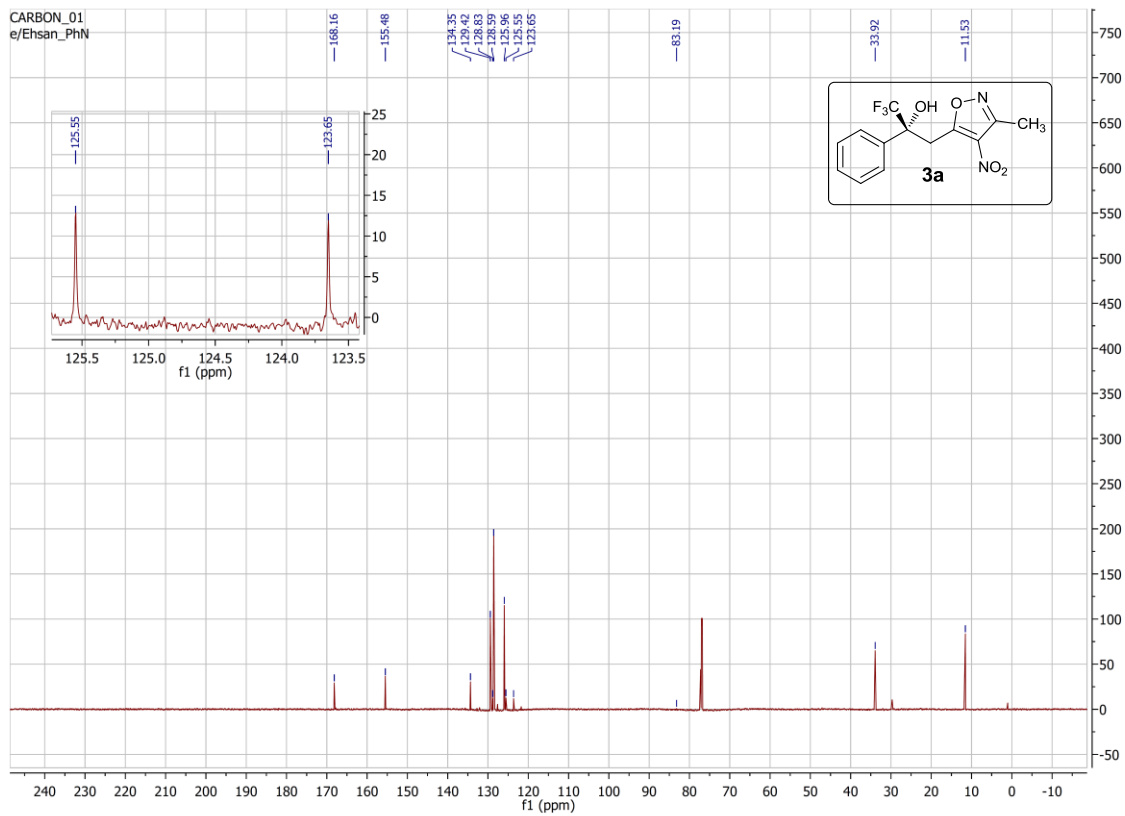
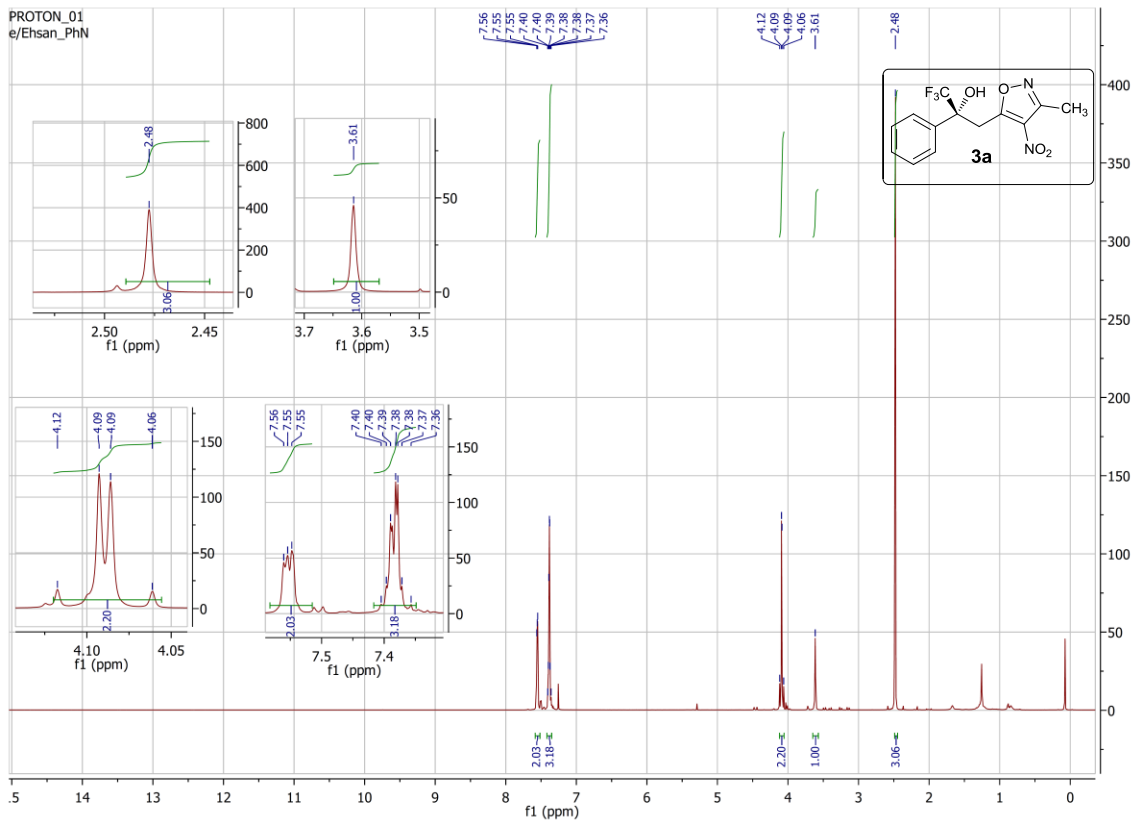
Injection date: 10/20/2016 1:11:34 PM
Acq. Analysis method: CHIRALPAKIARNP.M

Column: Chiralpak IA, (250 x 4,6) mm, 5µ, SN: IA00CE-RC036

Pressure at start: 41 bar **Start flow:** 0.700 ml/min **Column oven:** 29.99 °C



Name	RT [min]	Type	Area%	Area	Height	Width [min]
EH-32	16.54	BV	89.31	14579.95	713.13	0.31
	17.79	VB	10.69	1744.24	77.84	0.35
	Sum		100.00	16324.19		



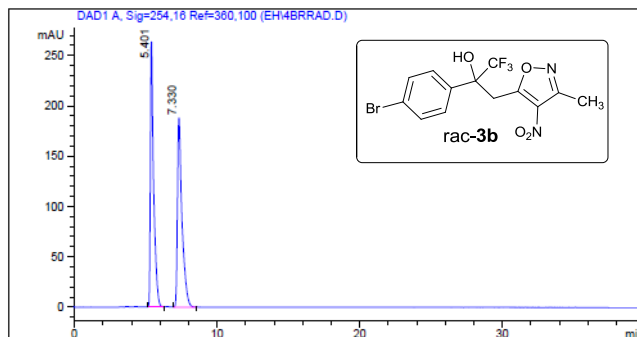
Sample Name: EH 4Br
 Data file: D:\GONZO\EH\4BRRAD.D
 Sample Info: Mobile phase: n-Heptane/EtOH 7:3;
 The sample is solved in DCM/MP



Säule: DAICELAD.M
 Säuleninfo: Chiralpak AD (250x4,6)mm
 Operator: Analytik Labor AKEN

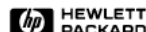
Injektion Time: 17:08:22
 Injektion Date: 01.12.2016

Instrument Conditions: At Start At Stop
 Temperature in °C: 30.0°C 30.0°C
 Pressure in bar: 42.8 43.6
 Flow in ml/min: 1.00 1.00



#	Ret. Time (min)	Width	Height (mAU)	Area (mAU*s)	Area %
1	5.40	0.22	263.78	4177.17	50.01
2	7.33	0.32	188.18	4175.08	49.99
Total				8352.25	100.00

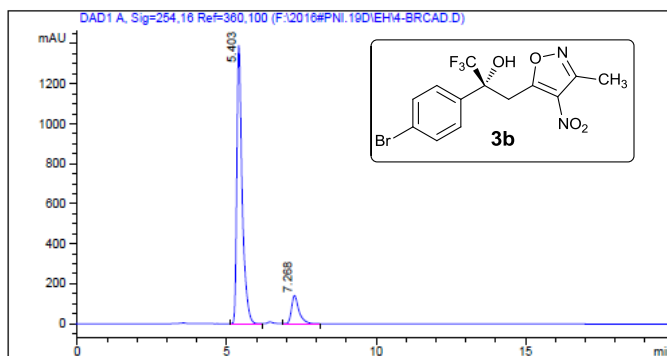
Sample Name: EH 4-Br c
 Data file: F:\2016#PNI.19D\EH\4-BRCAD.D
 Sample Info: Mobile phase: n-Heptane/EtOH 7:3;
 The sample is solved in DCM/MP



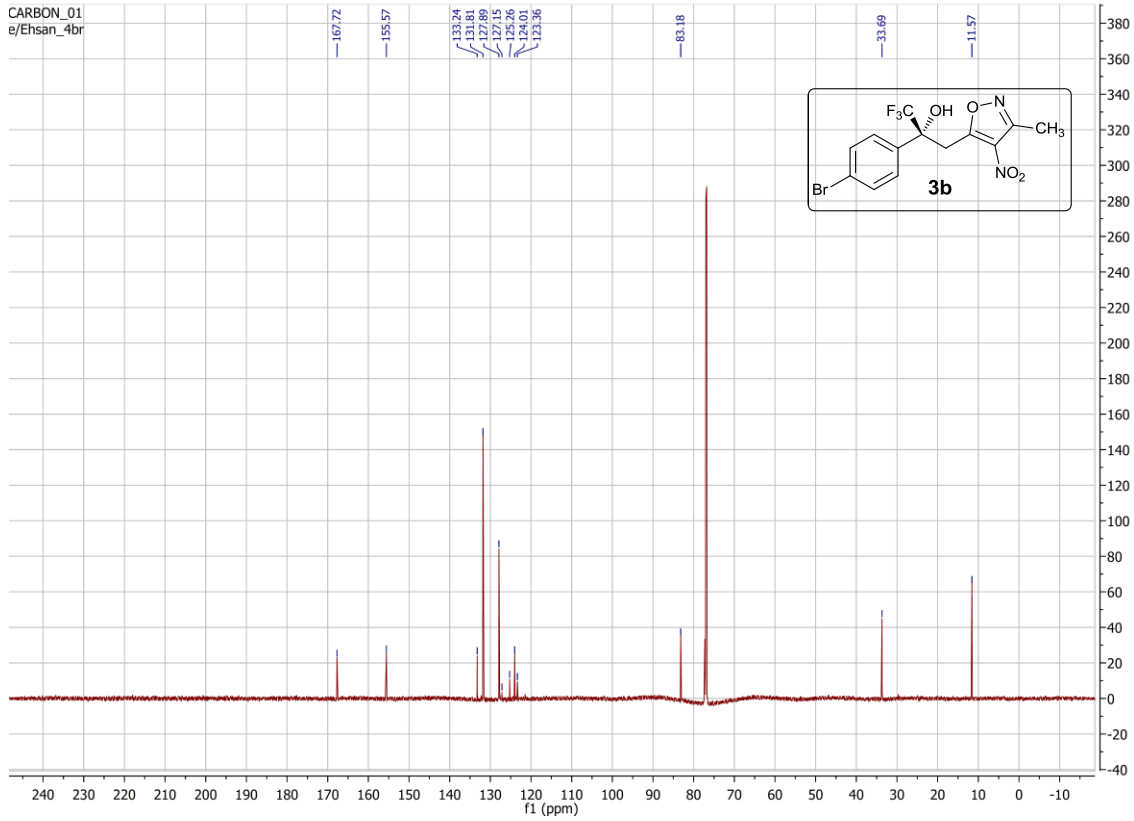
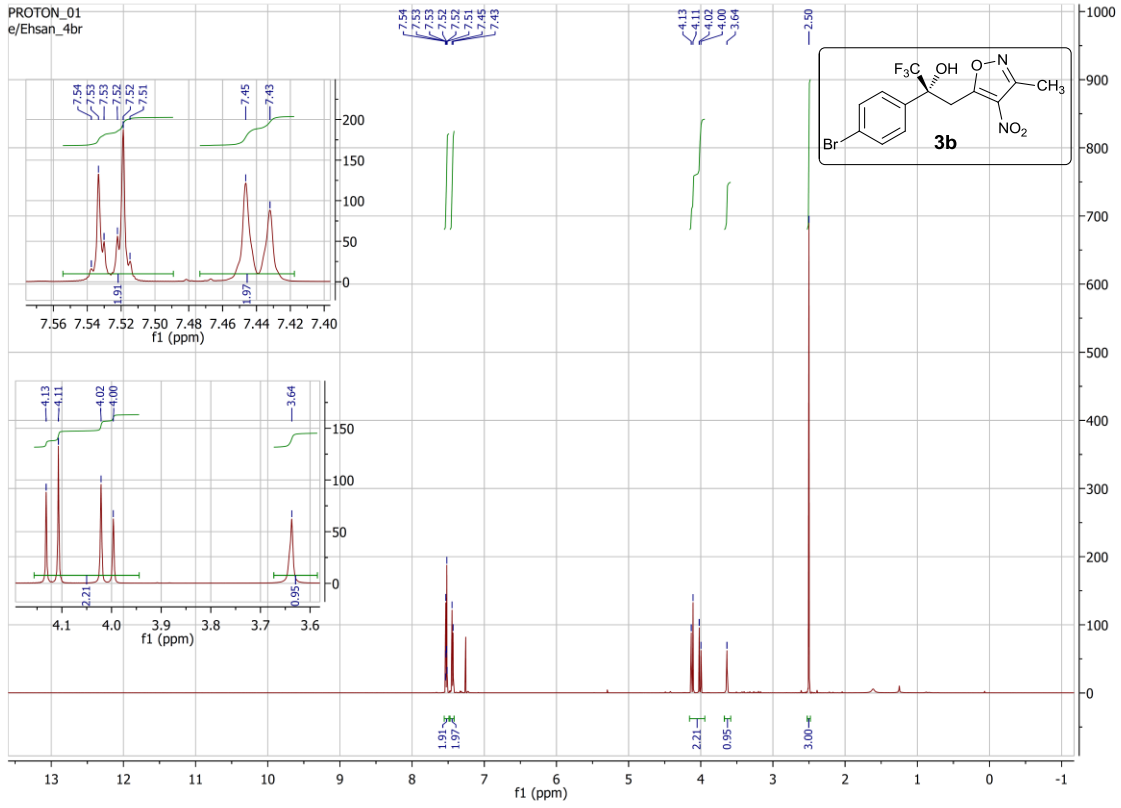
Säule: DAICELAD.M
 Säuleninfo: Chiralpak AS (250x4,6)mm
 Operator: Analytik Labor AKEN

Injektion Time: 10:59:57
 Injektion Date: 15.12.2016

Instrument Conditions: At Start At Stop
 Temperature in °C: 30.0°C 30.0°C
 Pressure in bar: 41.9 42.3
 Flow in ml/min: 1.00 1.00

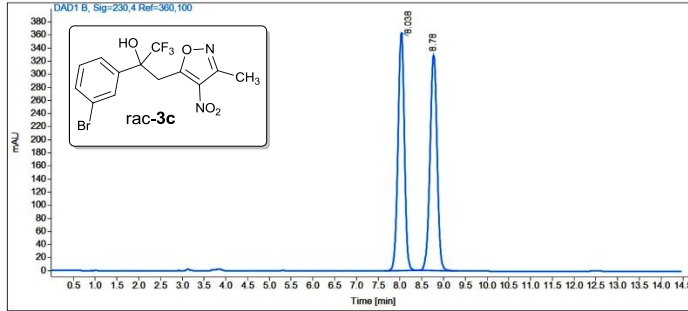


#	Ret. Time (min)	Width	Height (mAU)	Area (mAU*s)	Area %
1	5.40	0.19	1393.13	17503.76	87.87
2	7.27	0.29	140.85	2416.59	12.13
Total				19920.35	100.00



Sample name: EH 3-Br rac
Data file: C:\SNOOPY\EH\EH 3-BR RAC 1\A.D
Description: Mobile phase: n-Heptane/EtOH 9:1;
 The sample is solved in DCM/MIP
Injection date: 12/7/2016 9:48:07 AM
Acq. Analysis method: CHIRALPAKIARNP.M
Column: Chiralpak IC, (150 x 4,6) mm, 5µ, SN: IC00CD-QF015

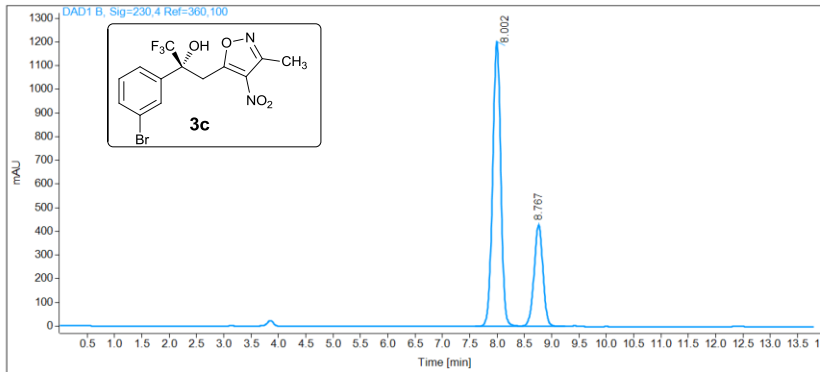
Pressure at start: 46 bar **Start flow:** 1.000 ml/min **Column oven:** 29.98 °C



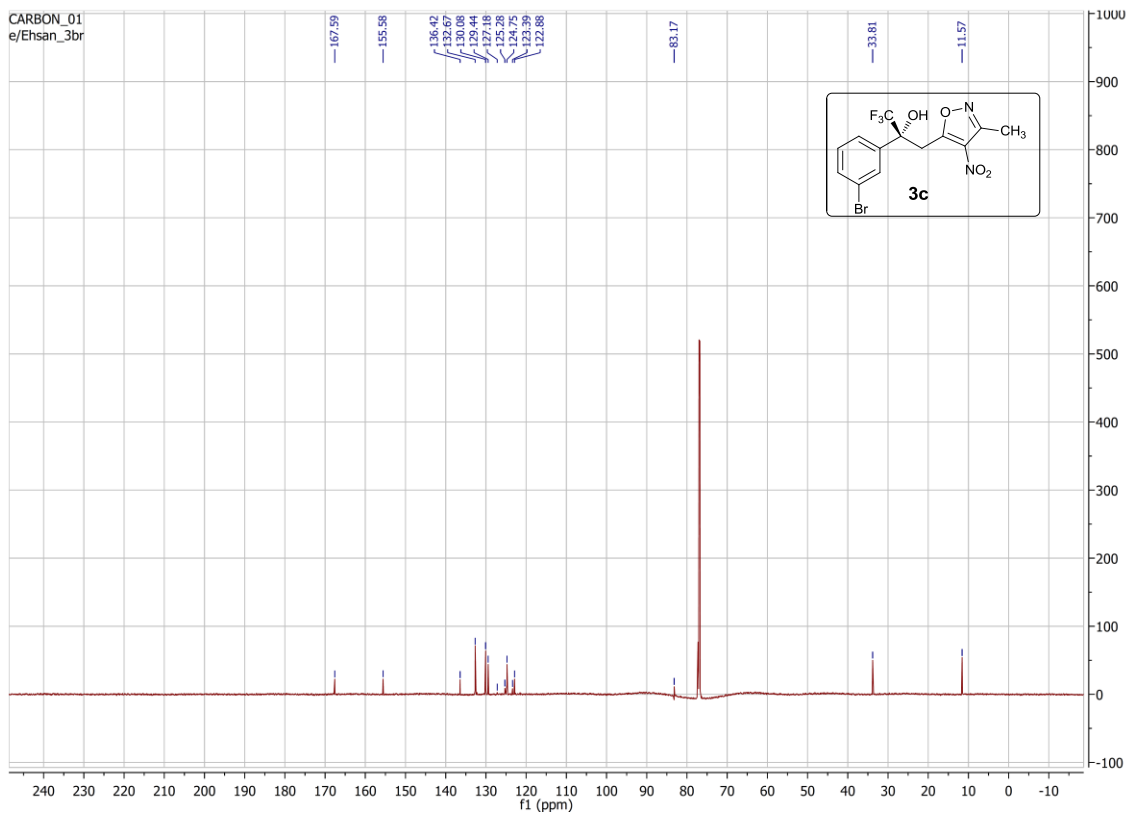
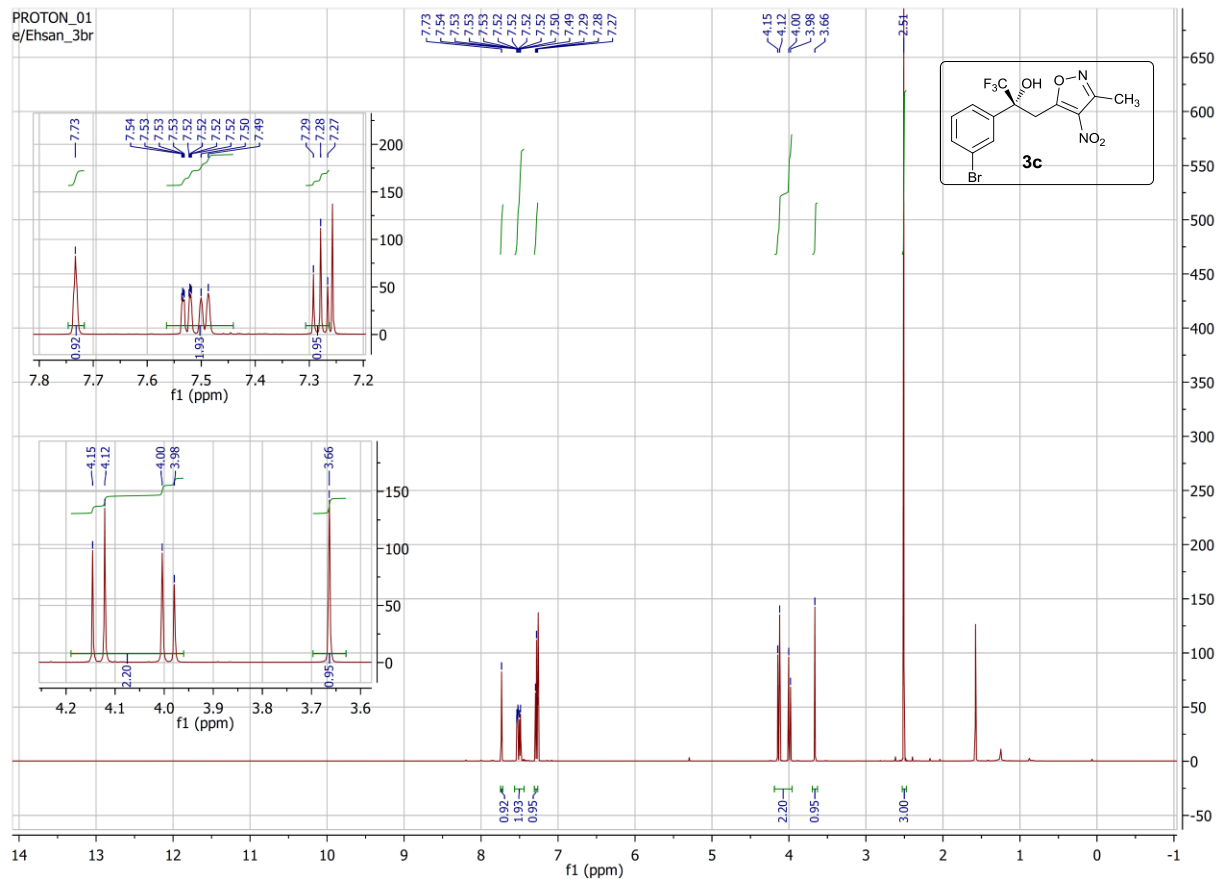
Name	RT [min]	Type	Area%	Area	Height	Width [min]
EH 3-Br rac						
	8.04	BB	49.99	3717.76	364.13	0.16
	8.78	BB	50.01	3719.37	329.25	0.17
Sum			100.00	7437.13		

Sample name: EH 3-Br c
Data file: C:\SNOOPY\EH\3-BR CIA.D
Description: Mobile phase: n-Heptane/EtOH 9:1;
 The sample is solved in DCM/MIP
Injection date: 12/13/2016 4:05:57 PM
Acq. Analysis method: CHIRALPAKIARNP.M
Column: Chiralpak IC, (150 x 4,6) mm, 5µ, SN: IC00CD-QF015

Pressure at start: 47 bar **Start flow:** 1.000 ml/min **Column oven:** 30 °C

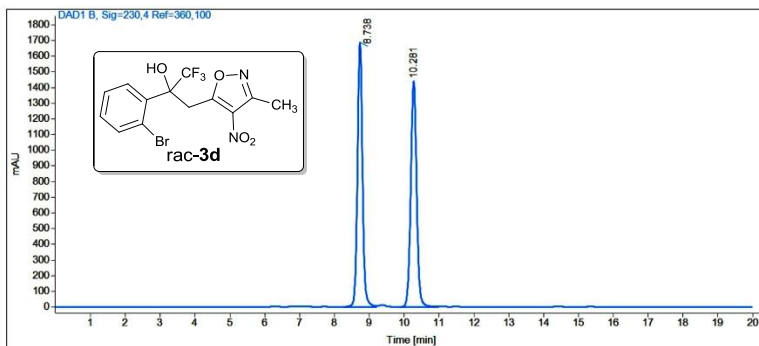


Name	RT [min]	Type	Area%	Area	Height	Width [min]
EH 3-Br c						
	8.00	BV	71.79	12427.73	1203.87	0.16
	8.77	VV	28.21	4884.31	429.34	0.17
Sum			100.00	17312.04		



Sample name: EH 2-Br rac
Data file: C:\SNOOPY\EH\2BRRRIA.D
Description: Mobile phase: n-Heptane/EtOH 7:3;
 The sample is solved in DCM/MP
Injection date: 12/7/2016 8:40:49 AM
Acq. Analysis method: CHIRALPAKIARNP.M
Column: Chiralpak IC, (150 x 4,6) mm, 5µ, SN: IC00CD-QF015

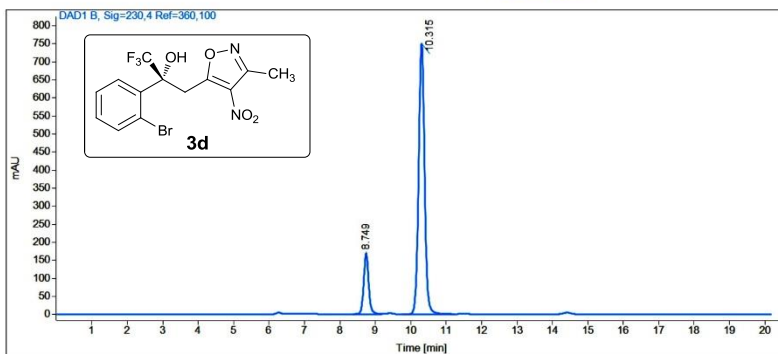
Pressure at start: 29 bar **Start flow:** 0.500 ml/min **Column oven:** 30 °C



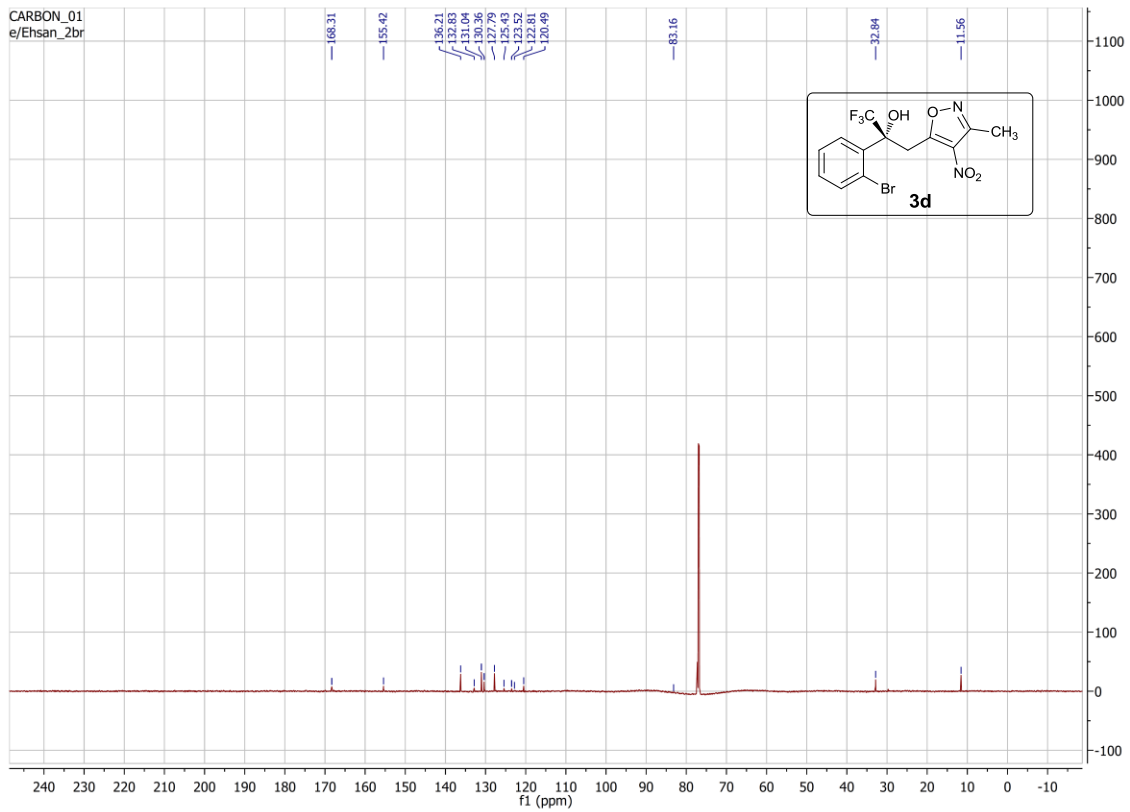
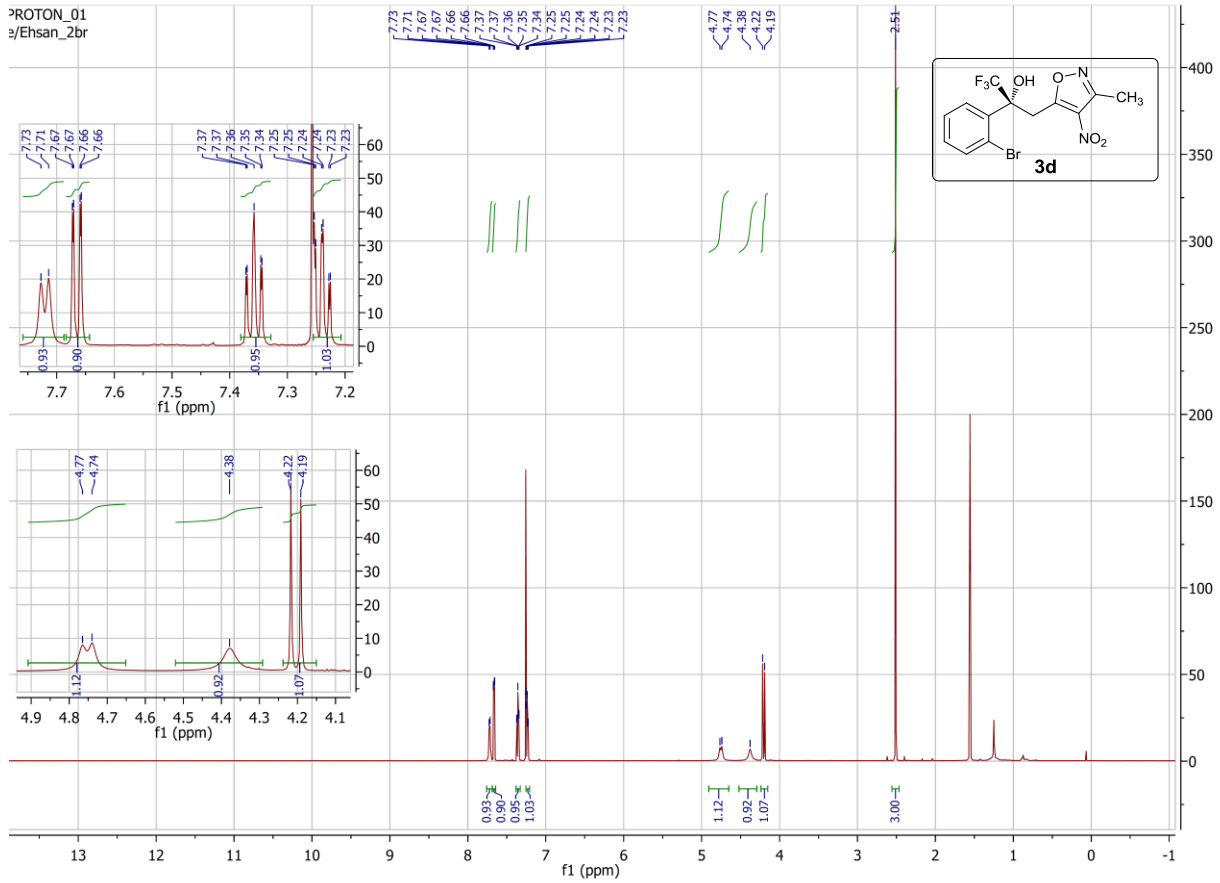
Name	RT [min]	Type	Area%	Area	Height	Width [min]
EH 2-Br rac	8.74	BV	49.91	16835.25	1686.59	0.15
	10.28	BV	50.09	16898.06	1434.11	0.18
Sum			100.00	33733.31		

Sample name: EH 2-Br c
Data file: C:\SNOOPY\EH\EH 2-Br C I.A.D
Description: Mobile phase: n-Heptane/EtOH 7:3 ;
 The sample is solved in DCM/MP
Injection date: 12/13/2016 2:31:21 PM
Acq. Analysis method: CHIRALPAKIARNP.M
Column: Chiralpak IC, (150 x 4,6) mm, 5µ, SN: IC00CD-QF015

Pressure at start: 29 bar **Start flow:** 0.500 ml/min **Column oven:** 30 °C



Name	RT [min]	Type	Area%	Area	Height	Width [min]
EH 2-Br c	8.75	BV	15.76	1634.91	167.92	0.15
	10.31	BV	84.24	8738.56	749.76	0.18
Sum			100.00	10373.47		



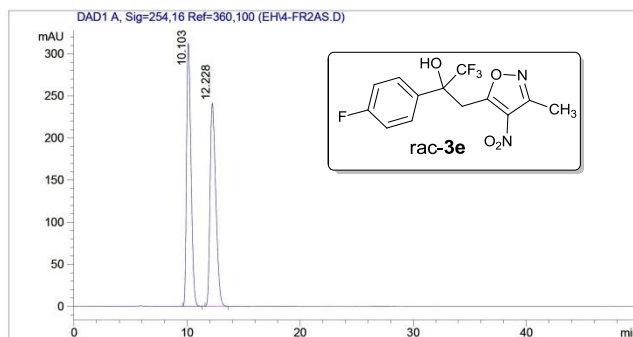
Sample Name: EH 4-F rac
 Data file: D:\GONZO\EH\4-FR2AS.D
 Sample Info: Mobile phase: n-Heptane/EtOH 97:3;
 The sample is solved in DCM/MP



Säule: DAICELAS.M
 Säuleninfo: Chiralpak AS (250x4,6)mm
 Operator: Analytik Labor AKEN

Injektion Time: 16:16:15
 Injektion Date: 14.12.2016

Instrument Conditions: At Start At Stop
 Temperature in°C: 30.0°C 30.0°C
 Pressure in bar: 32.7 33.4
 Flow in ml/min: 1.00 1.00



#	Ret. Time (min)	Width	Height (mAU)	Area (mAU*s)	Area %
1	10.10	0.42	312.51	8572.12	49.99
2	12.23	0.55	241.08	8576.20	50.01
Total				17148.32	100.00

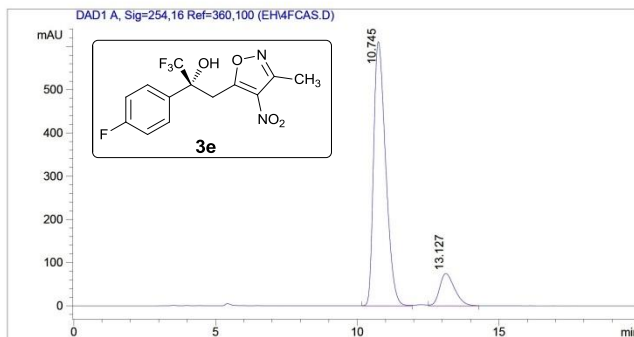
Sample Name: EH 4-F C
 Data file: D:\GONZO\EH\4FCAS.D
 Sample Info: Mobile phase: n-Heptane/EtOH 97:3;
 The sample is solved in DCM/MP



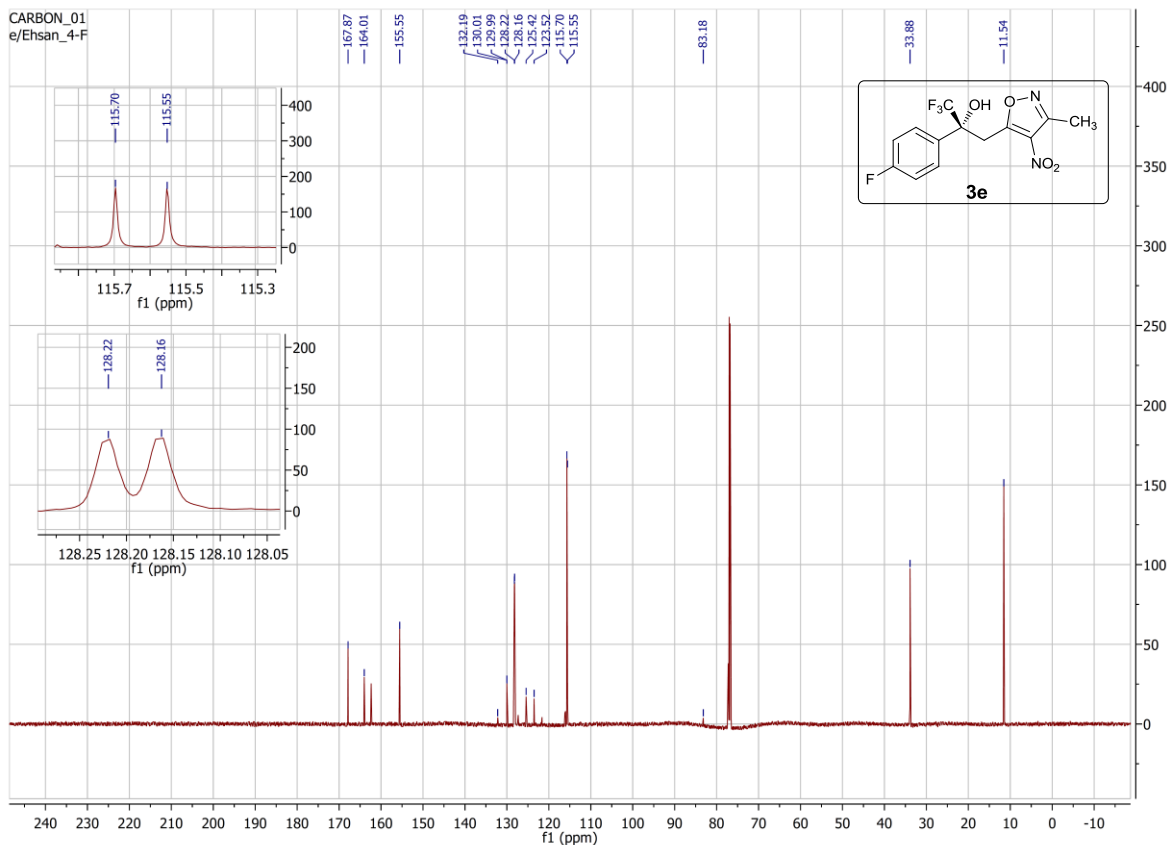
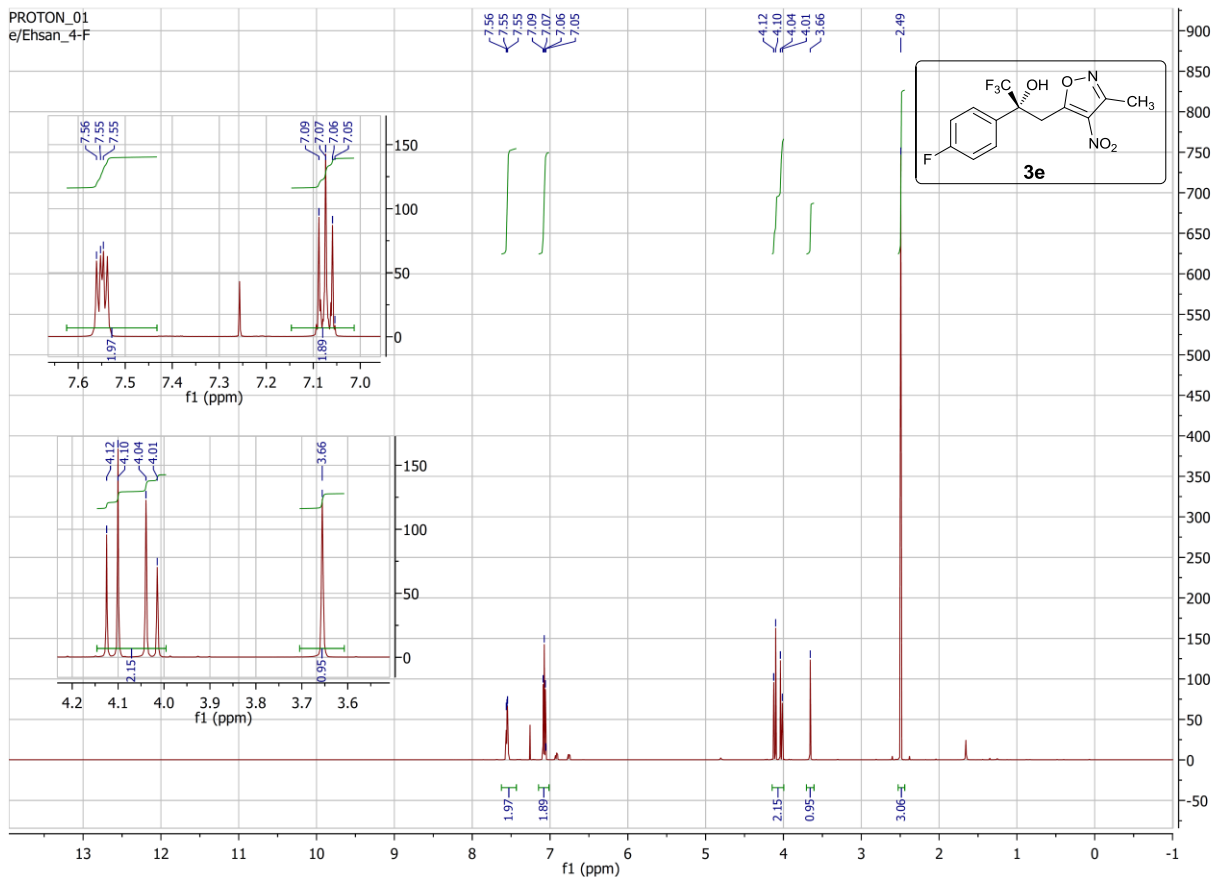
Säule: DAICELAS.M
 Säuleninfo: Chiralpak AS (250x4,6)mm
 Operator: Analytik Labor AKEN

Injektion Time: 08:50:03
 Injektion Date: 20.12.2016

Instrument Conditions: At Start At Stop
 Temperature in°C: 30.0°C 30.0°C
 Pressure in bar: 32.4 32.9
 Flow in ml/min: 1.00 1.00



#	Ret. Time (min)	Width	Height (mAU)	Area (mAU*s)	Area %
1	10.74	0.46	610.88	18007.72	86.90
2	13.13	0.61	74.57	2713.57	13.10
Total				20721.29	100.00



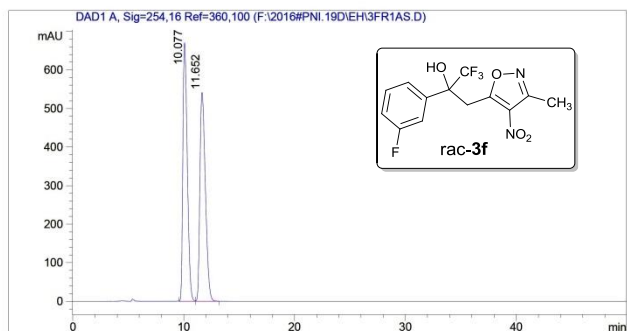
Sample Name: EH 3-F rac
 Data file: F:\2016#PNI.19D\EH\3FR1AS.D
 Sample Info: Mobile phase: n-Heptane/EtOH 97:3;
 The sample is solved in DCM/MP



Säule: DAICELAS.M
 Säuleninfo: Chiralpak AS (250x4,6)mm
 Operator: Analytik Labor AKEN

Injektion Time: 17:58:41
 Injektion Date: 14.12.2016

Instrument Conditions: At Start At Stop
 Temperature in °C: 30.0°C 30.0°C
 Pressure in bar: 32.4 33.0
 Flow in ml/min: 1.00 1.00



#	Ret. Time (min)	Width	Height (mAU)	Area (mAU*s)	Area %
1	10.08	0.43	670.46	18608.52	49.96
2	11.65	0.57	541.39	18641.74	50.04
Total				37250.25	100.00

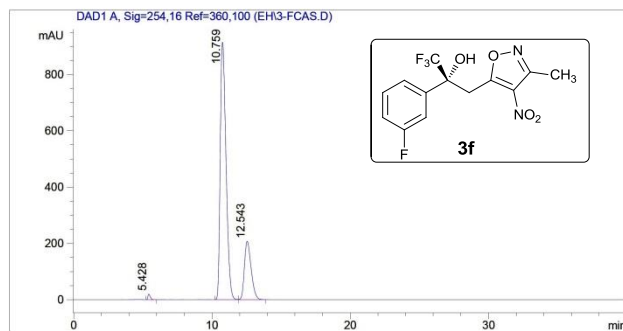
Sample Name: EH 3-F c
 Data file: D:\GONZO\EH\3-FCAS.D
 Sample Info: Mobile phase: n-Heptane/EtOH 97:3;
 The sample is solved in DCM/MP



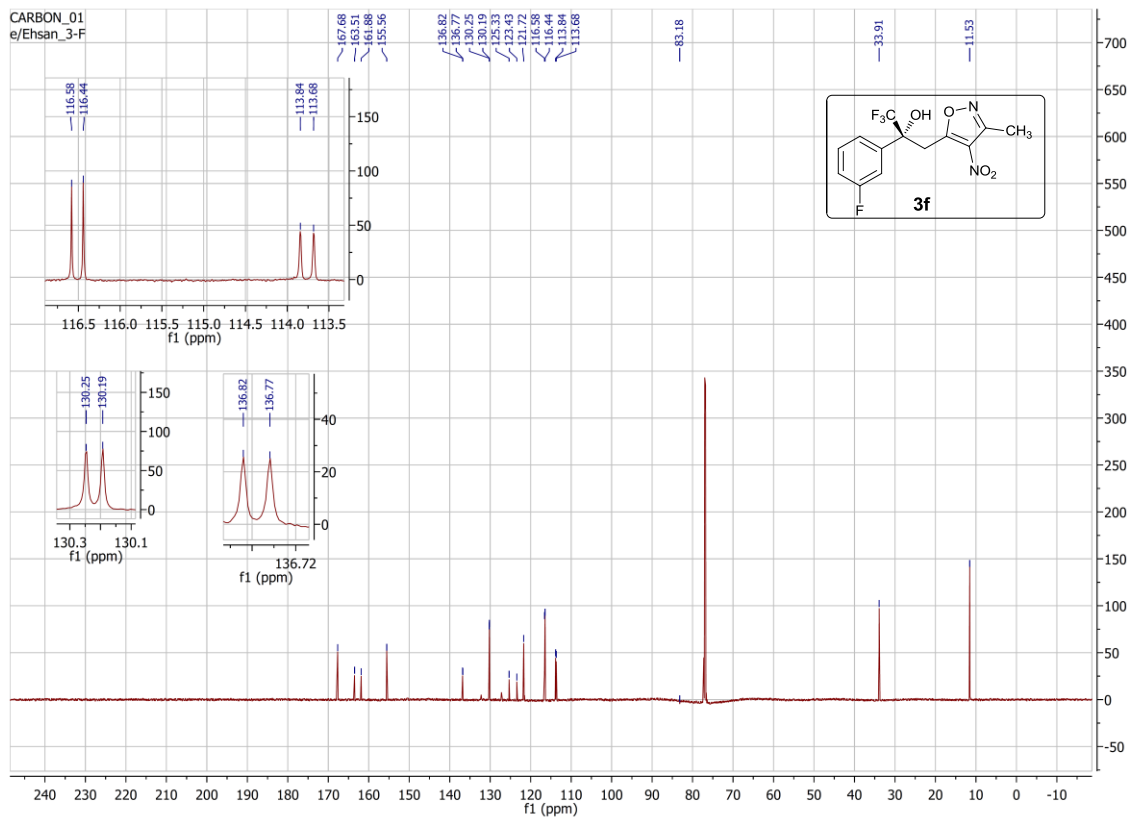
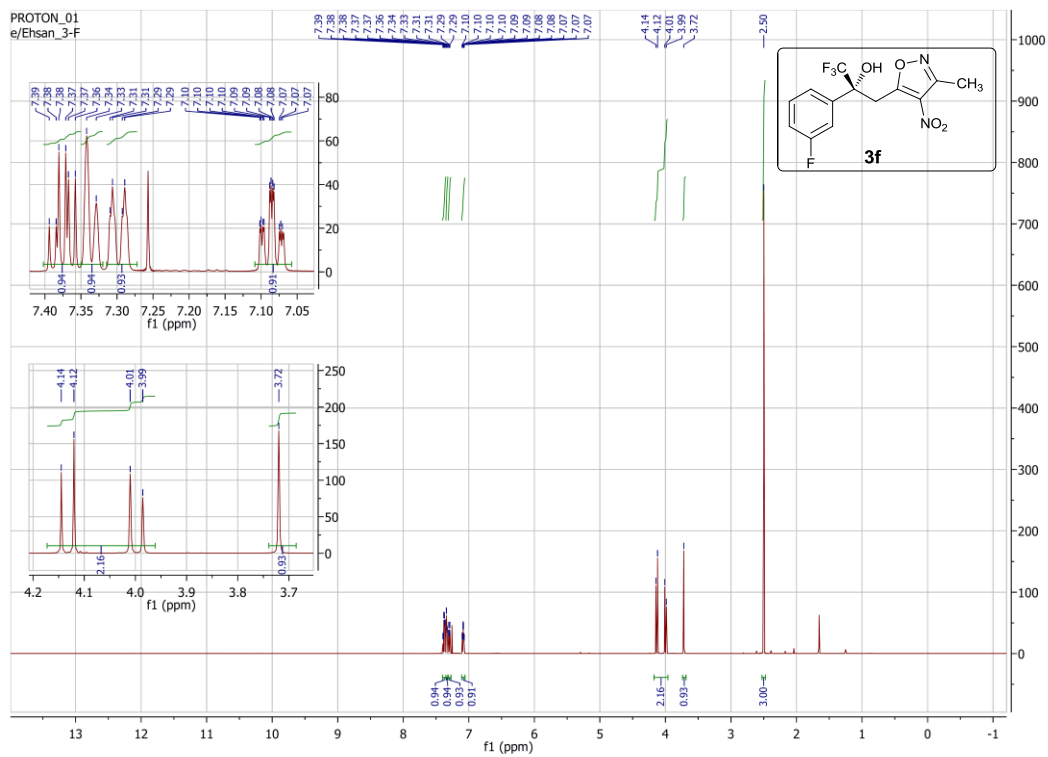
Säule: DAICELAS.M
 Säuleninfo: Chiralpak AS (250x4,6)mm
 Operator: Analytik Labor AKEN

Injektion Time: 09:00:25
 Injektion Date: 19.12.2016

Instrument Conditions: At Start At Stop
 Temperature in °C: 30.0°C 30.0°C
 Pressure in bar: 31.1 31.5
 Flow in ml/min: 1.00 1.00



#	Ret. Time (min)	Width	Height (mAU)	Area (mAU*s)	Area %
1	5.43	0.20	19.68	232.41	0.69
2	10.76	0.45	915.25	26559.59	78.57
3	12.54	0.56	207.23	7011.89	20.74
Total				33803.90	100.00

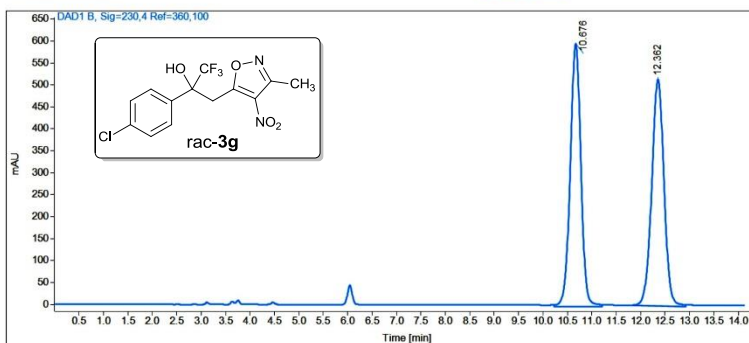


Sample name: EH-4-Cl rac
Data file: C:\SNOOPY\EH\EH-4-CL RAC 2 IA.D
Description: Mobile phase: n-Heptane/i-PrOH 9:1;
 The sample is solved in DCM/MP

Injection date: 11/28/2016 9:40:48 AM
Acq. Analysis method: CHIRALPAKIARNP.M

Column: Chiralpak IA, (250 x 4.6) mm, 5 μ , SN: IA00CE-RC036

Pressure at start: 47 bar **Start flow:** 1.000 ml/min **Column oven:** 30 °C



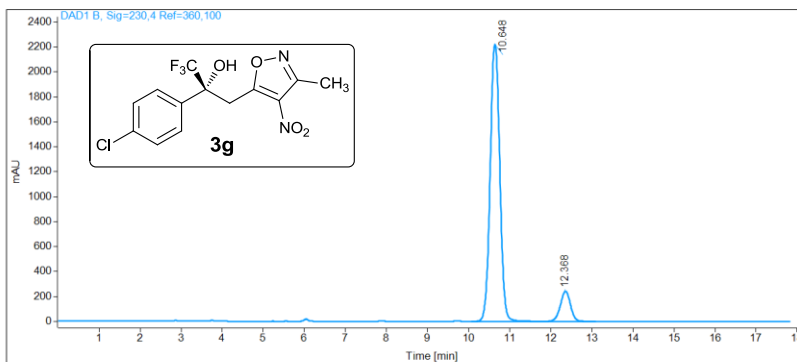
Name	RT [min]	Type	Area%	Area	Height	Width [min]
EH-4-Cl rac	10.68	MM	50.07	9049.45	598.92	0.25
	12.36	MM	49.93	9025.57	516.21	0.29
Sum			100.00	18075.02		

Sample name: EH-42
Data file: C:\SNOOPY\EH\EH-42 2 IA.D
Description: Mobile phase: n-Heptane/i-PrOH 9:1;
 The sample is solved in DCM/MP

Injection date: 11/28/2016 9:59:33 AM
Acq. Analysis method: CHIRALPAKIARNP.M

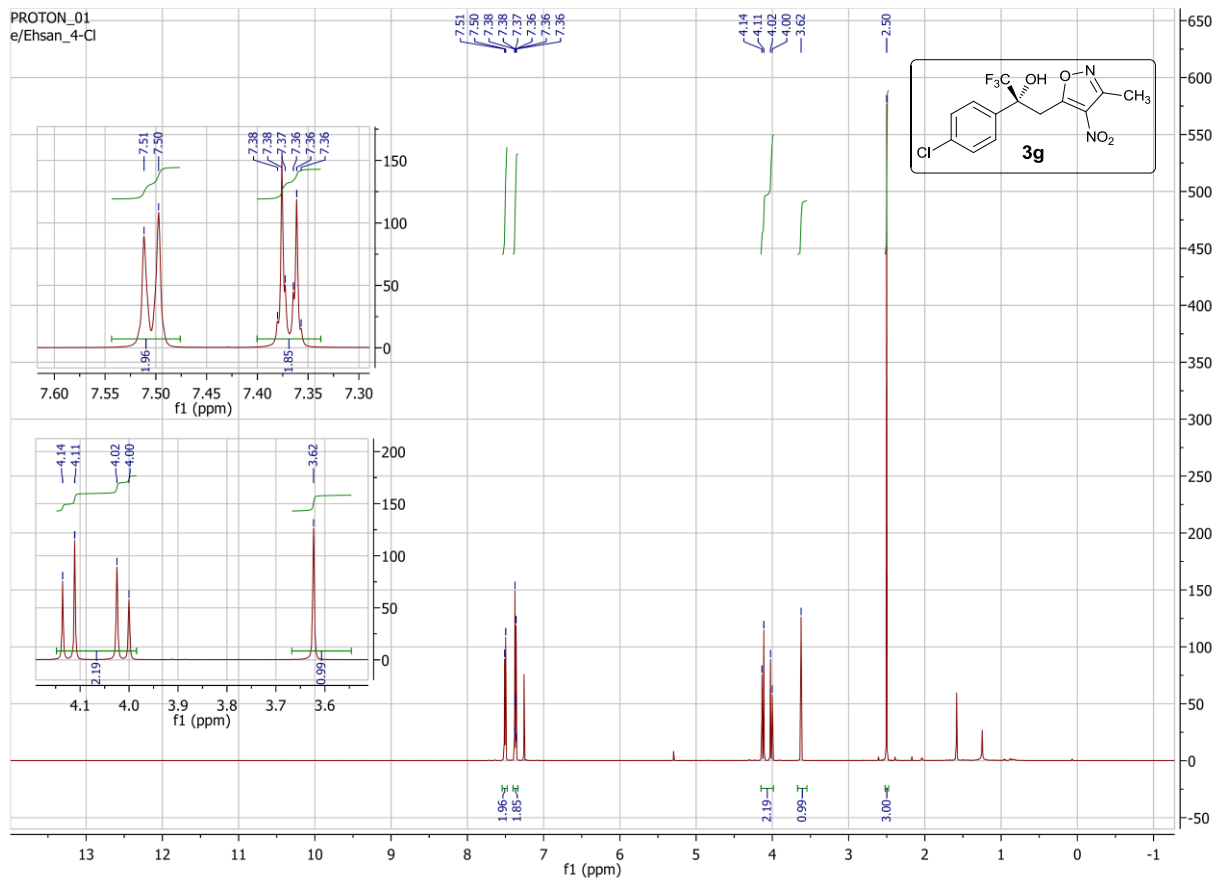
Column: Chiralpak IA, (250 x 4.6) mm, 5 μ , SN: IA00CE-RC036

Pressure at start: 47 bar **Start flow:** 1.000 ml/min **Column oven:** 29.98 °C

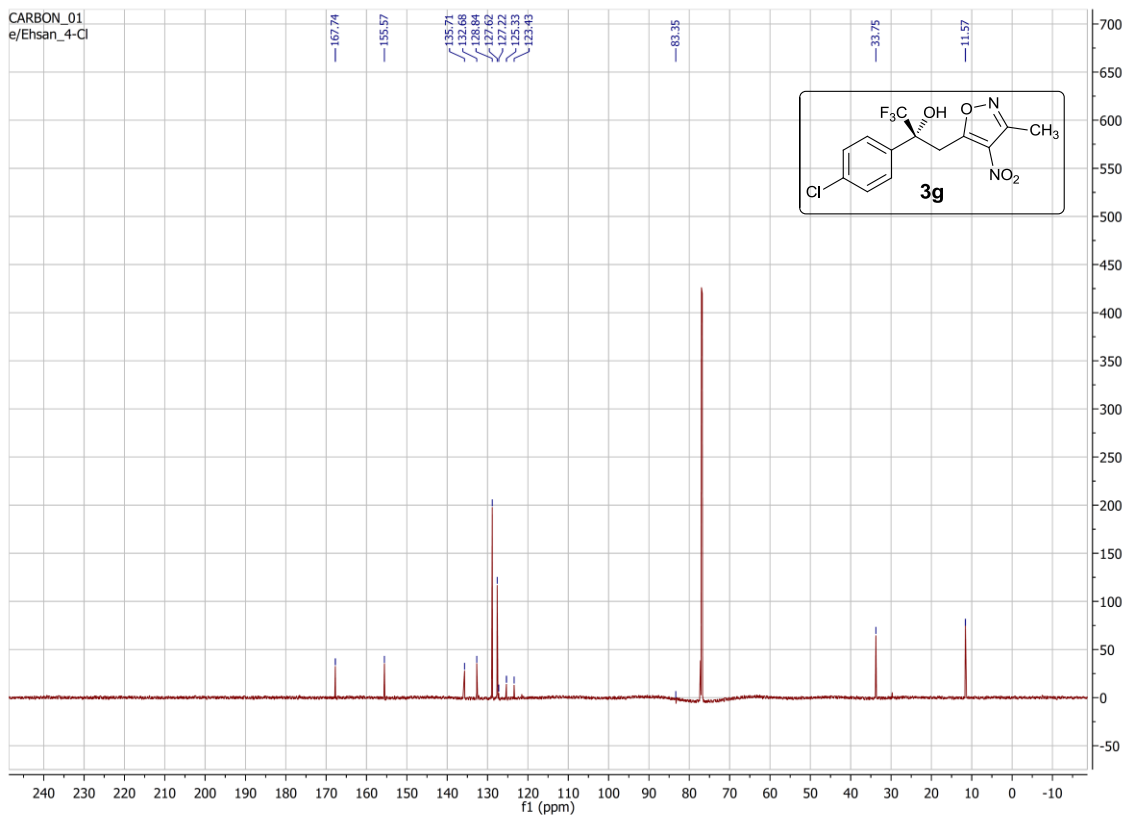


Name	RT [min]	Type	Area%	Area	Height	Width [min]
EH-42	10.65	BB	89.66	36043.07	2221.06	0.26
	12.37	BB	10.34	4156.97	241.77	0.27
Sum			100.00	40200.04		

PROTON_01
e/Ehsan_4-Cl



CARBON_01
e/Ehsan_4-Cl



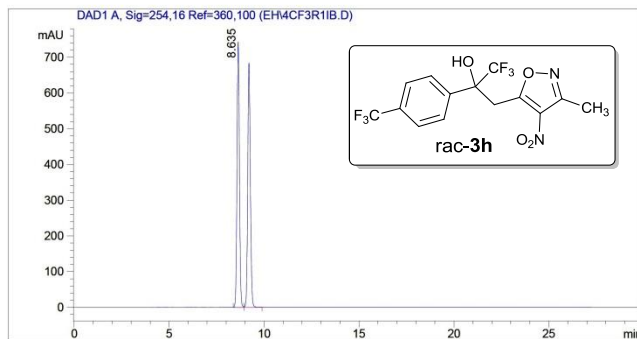
Sample Name: EH 4-CF3 rac
 Data file: D:\GONZO\EH\4CF3R1IB.D
 Sample Info: Mobile phase: n-Heptane/EtOH 9:1;
 The sample is solved in DCM/MP



Column: DAICELIB.M
 Column info: Chiralpak IB (250x4,6)mm
 Operator: Analytik Labor AKEN

Injektion Time: 09:18:03
 Injektion Date: 06.12.2016

Instrument Conditions: At Start At Stop
 Temperature in °C: 30.0°C 30.0°C
 Pressure in bar: 36.4 37.0
 Flow in ml/min: 0.70 0.70



#	Ret. Time (min)	Width	Height (mAU)	Area (mAU*s)	Area %
1	8.63	0.14	744.04	6532.54	49.87
2	9.20	0.16	685.28	6567.19	50.13
Total				13099.72	100.00

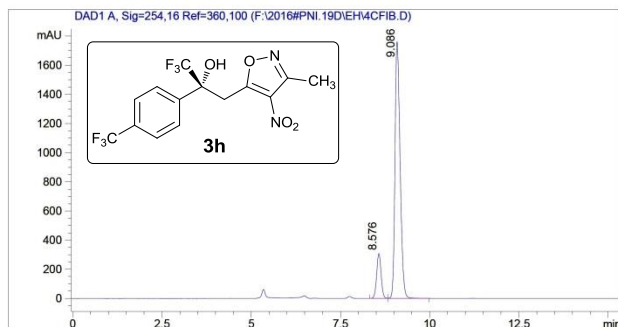
Sample Name: EH 4-CF3
 Data file: F:\2016#PNI.19D\EH\4CFIB.D
 Sample Info: Mobile phase: n-Heptane/EtOH 9:1;
 The sample is solved in DCM/MP



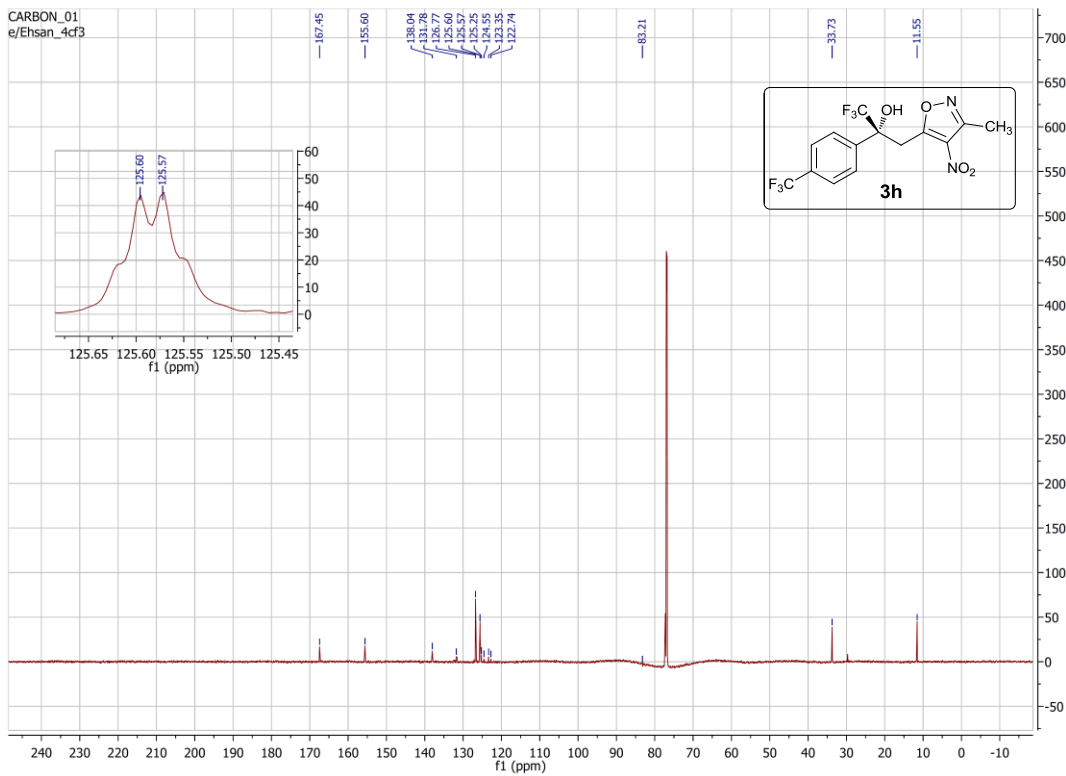
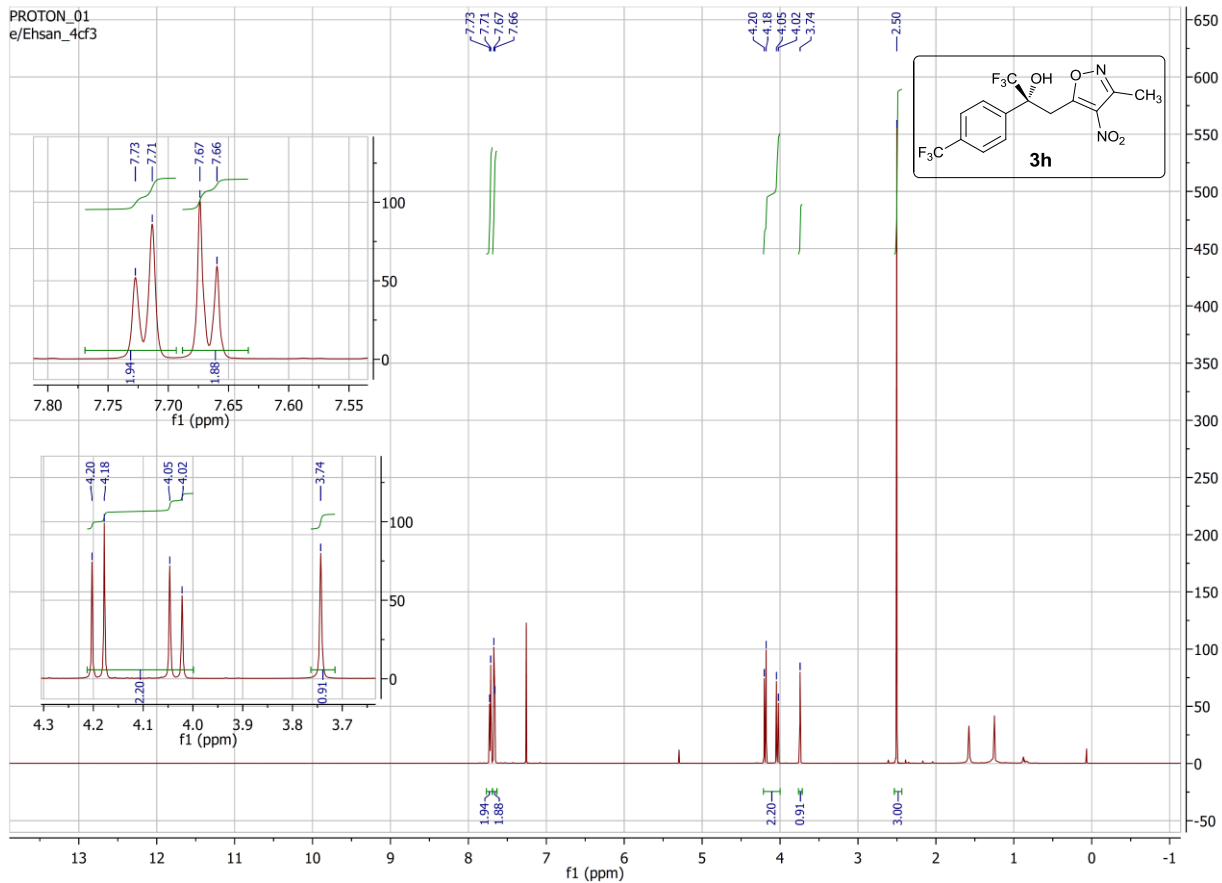
Säule: DAICELIB.M
 Säuleninfo: Chiralpak AS (250x4,6)mm
 Operator: Analytik Labor AKEN

Injektion Time: 10:53:40
 Injektion Date: 06.12.2016

Instrument Conditions: At Start At Stop
 Temperature in °C: 30.0°C 30.0°C
 Pressure in bar: 36.3 36.7
 Flow in ml/min: 0.70 0.70



#	Ret. Time (min)	Width	Height (mAU)	Area (mAU*s)	Area %
1	8.58	0.14	308.54	2674.42	13.26
2	9.09	0.17	1762.18	17495.69	86.74
Total				20170.12	100.00



Sample Name: EH Octa F rac
 Data file: D:\ERNIE\EH\OCR2AD.D
 Sample Info: Mobile phase: n-Heptane/iPrOH 97:3;
 The sample is solved in DCM/LM

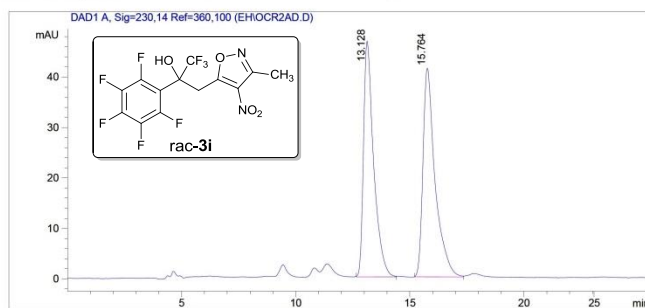


Column: DAICELAD.M
 Column info: (250 x 4)mm; 5µ non-chiral column

Operator: Analytical Lab AK Schoenebeck

Injektion Time: 16:09:21
 Injektion Date: 13.12.2016

Instrument Conditions: At Start At Stop
 Temperature in °C: 30.0 30.0
 Pressure in bar: 25.7 25.4
 Flow in ml/min: 0.7 0.7



#	Ret. Time (min)	Width	Height (mAU)	Area (mAU*s)	Area %
1	13.13	0.45	46.74	1437.58	48.51
2	15.76	0.54	41.33	1525.85	51.49
Total				2963.44	100.00

Sample Name: EH Octa F C
 Data file: D:\ERNIE\EH\OCFCAD.D
 Sample Info: Mobile phase: n-Heptane/iPrOH 97:3;
 The sample is solved in DCM/LM

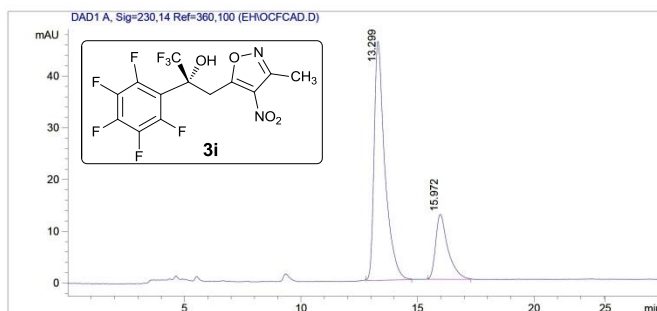


Column: DAICELAD.M
 Column info: (250 x 4)mm; 5µ non-chiral column

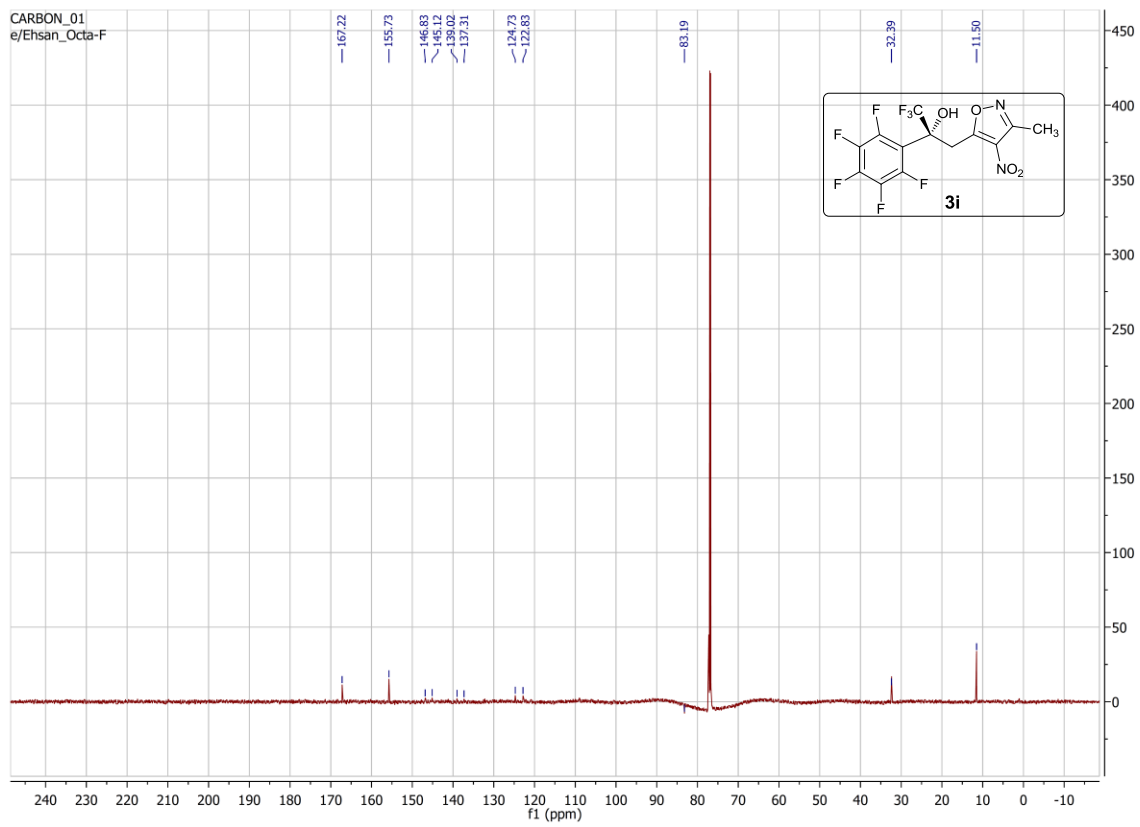
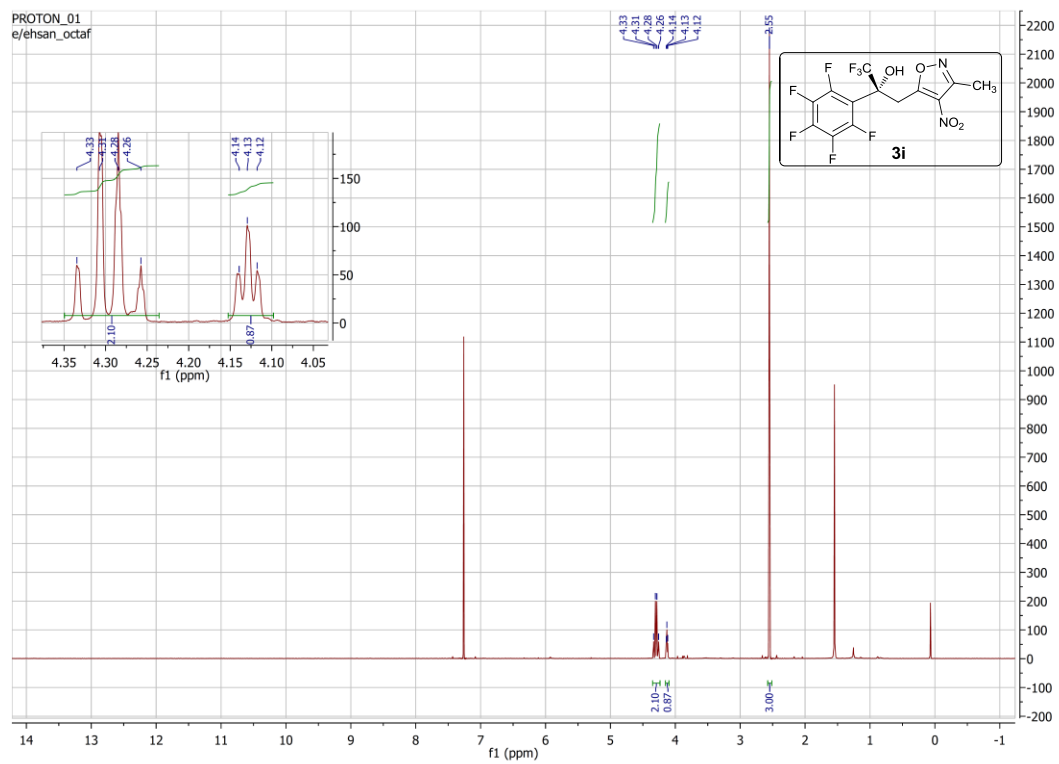
Operator: Analytical Lab AK Schoenebeck

Injektion Time: 10:24:54
 Injektion Date: 21.12.2016

Instrument Conditions: At Start At Stop
 Temperature in °C: 30.0 30.0
 Pressure in bar: 24.4 24.8
 Flow in ml/min: 0.7 0.7



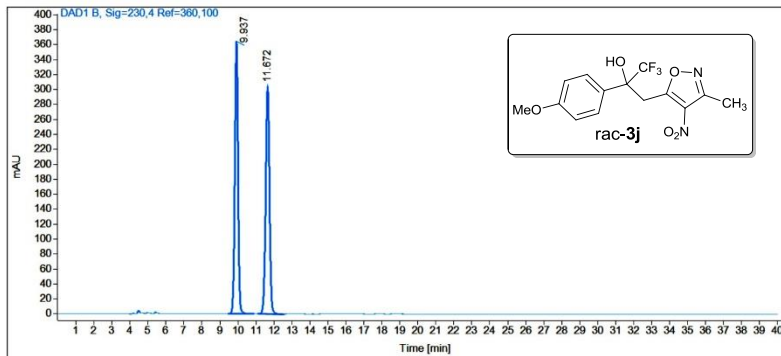
#	Ret. Time (min)	Width	Height (mAU)	Area (mAU*s)	Area %
1	13.30	0.46	46.21	1477.24	76.25
2	15.97	0.53	12.55	460.18	23.75
Total				1937.41	100.00



Sample name: EH 4-OMe rac
Data file: C:\SNOOPY\EH4-OMER11A.D
Description: Mobile phase: n-Heptane/EtOH 7:3;
 The sample is solved in DCM/MP
Injection date: 12/12/2016 5:54:16 PM
Acq. Analysis method: CHIRALPAKIARNP.M

Column: Chiralpak IC, (150 x 4,6) mm, 5µ, SN: IC00CD-QF015

Pressure at start: 41 bar **Start flow:** 0.700 ml/min **Column oven:** 29.99 °C

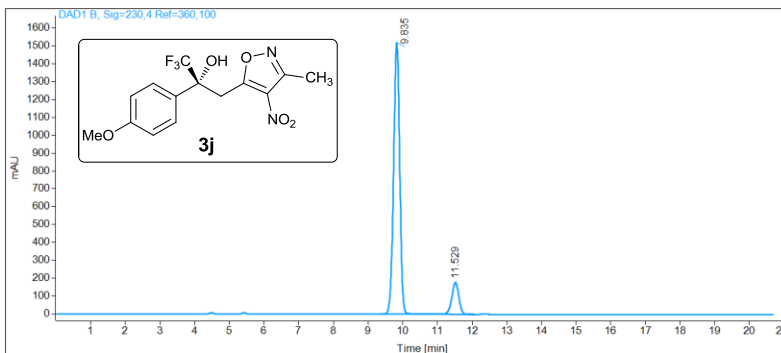


Name	RT [min]	Type	Area%	Area	Height	Width [min]
EH 4-OMe rac	9.94	BB	50.01	4458.66	364.47	0.19
	11.67	BB	49.99	4457.20	304.70	0.23
Sum			100.00	8915.87		

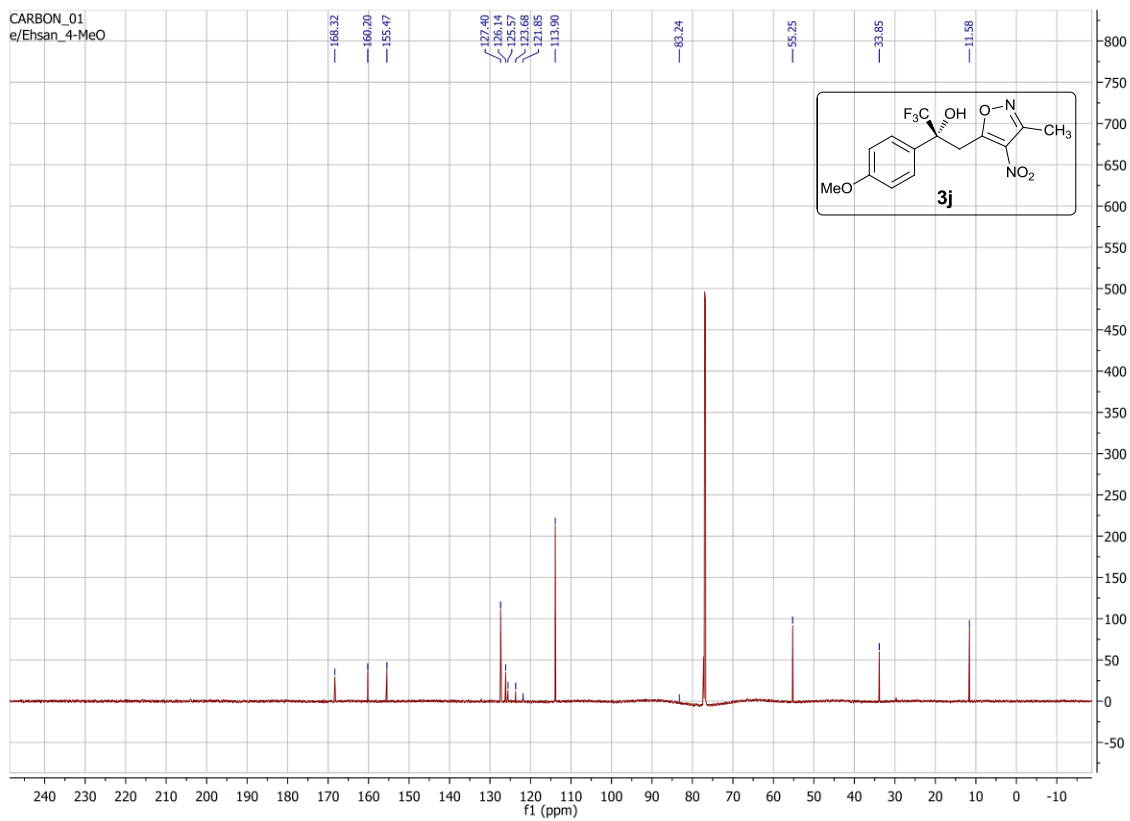
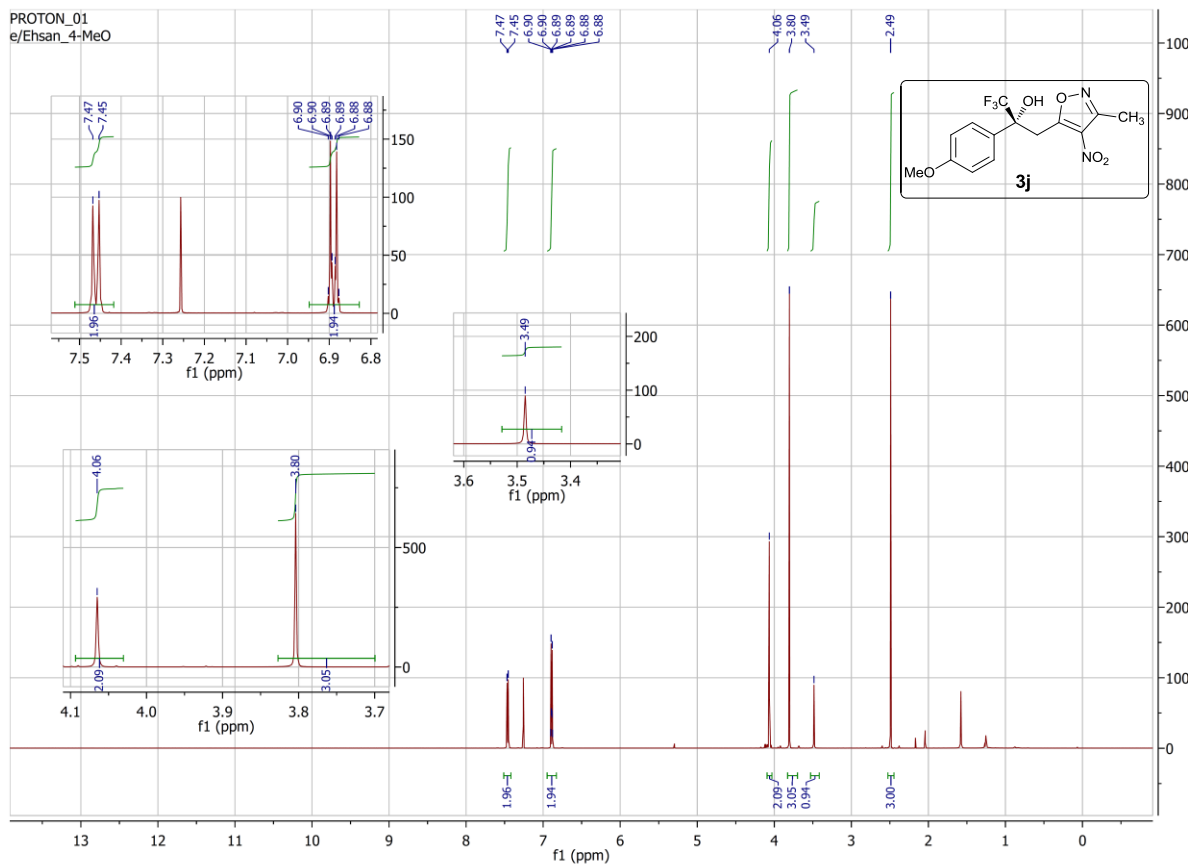
Sample name: EH 4-MeO C
Data file: C:\SNOOPY\EH4-MEO C I.A.D
Description: Mobile phase: n-Heptane/EtOH 7:3 ;
 The sample is solved in DCM/MP
Injection date: 12/20/2016 10:35:30 AM
Acq. Analysis method: CHIRALPAKIARNP.M

Column: Chiralpak IA, (250 x 4,6) mm, 5µ, SN: IA00CE-RC036

Pressure at start: 41 bar **Start flow:** 0.700 ml/min **Column oven:** 30 °C



Name	RT [min]	Type	Area%	Area	Height	Width [min]
EH 4-MeO C	9.84	BB	88.17	18586.24	1518.75	0.19
	11.53	BB	11.83	2494.90	175.61	0.22
Sum			100.00	21081.14		

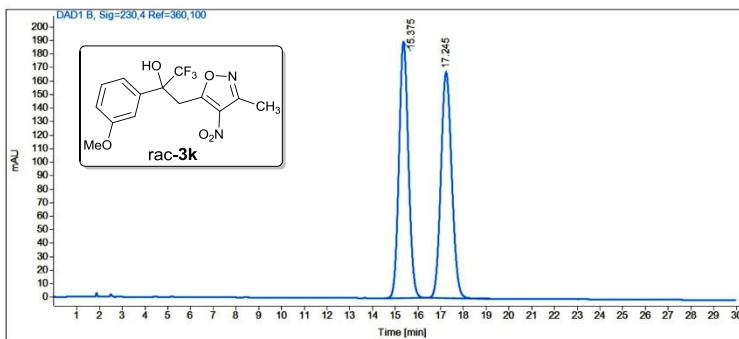


Sample name: EH 3-OMe rac
Data file: C:\SNOOPY\EH\EH 3-OME RAC.IG.D
Description: Mobile phase: n-Heptane/iPrOH 97:3 ;
 The sample is solved in DCM/MP

Injection date: 1/12/2017 1:20:28 PM
Acq. Analysis method: CHIRALPAK-IG.M

Column: Chiralpak IC, (150 x 4,6) mm, 5µ, SN: IC00CD-QF015

Pressure at start: 32 bar **Start flow:** 1.000 ml/min **Column oven:** 30 °C



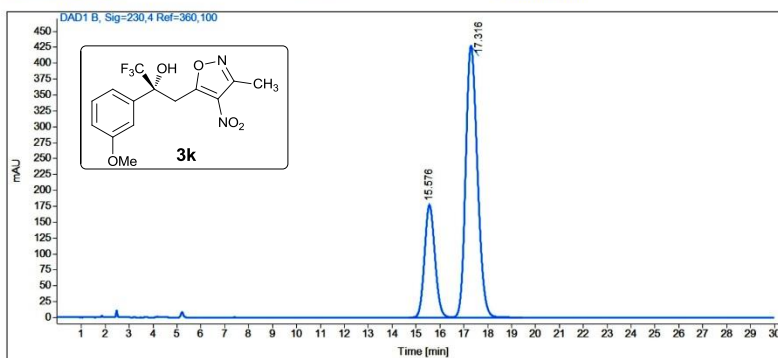
Name	EH 3-OMe rac				
RT [min]	Type	Area%	Area	Height	Width [min]
15.37	BB	49.97	5518.08	189.60	0.45
17.25	BB	50.03	5523.86	167.07	0.52
Sum		100.00	11041.95		

Sample name: EH 3-OMe C
Data file: C:\SNOOPY\EH\3-OMECXIG.D
Description: Mobile phase: n-Heptane/iPrOH 97:3 ;
 The sample is solved in DCM/MP

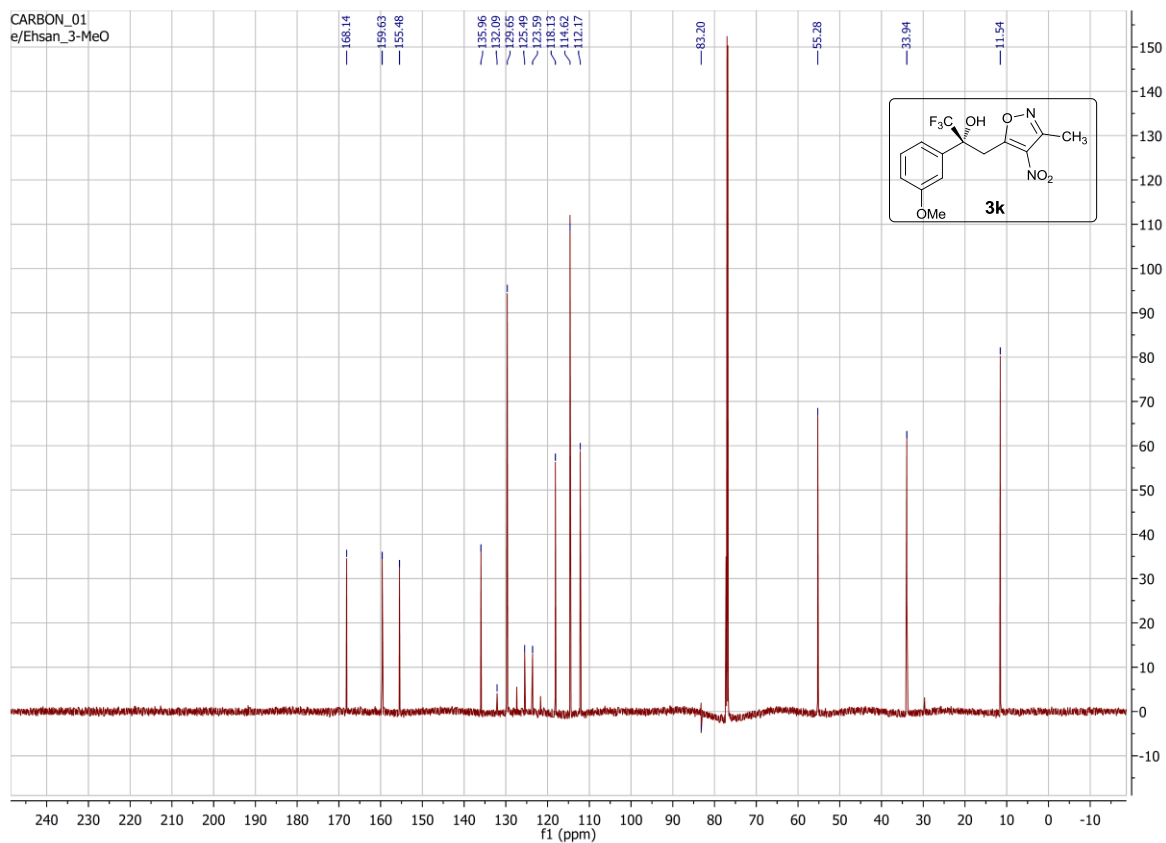
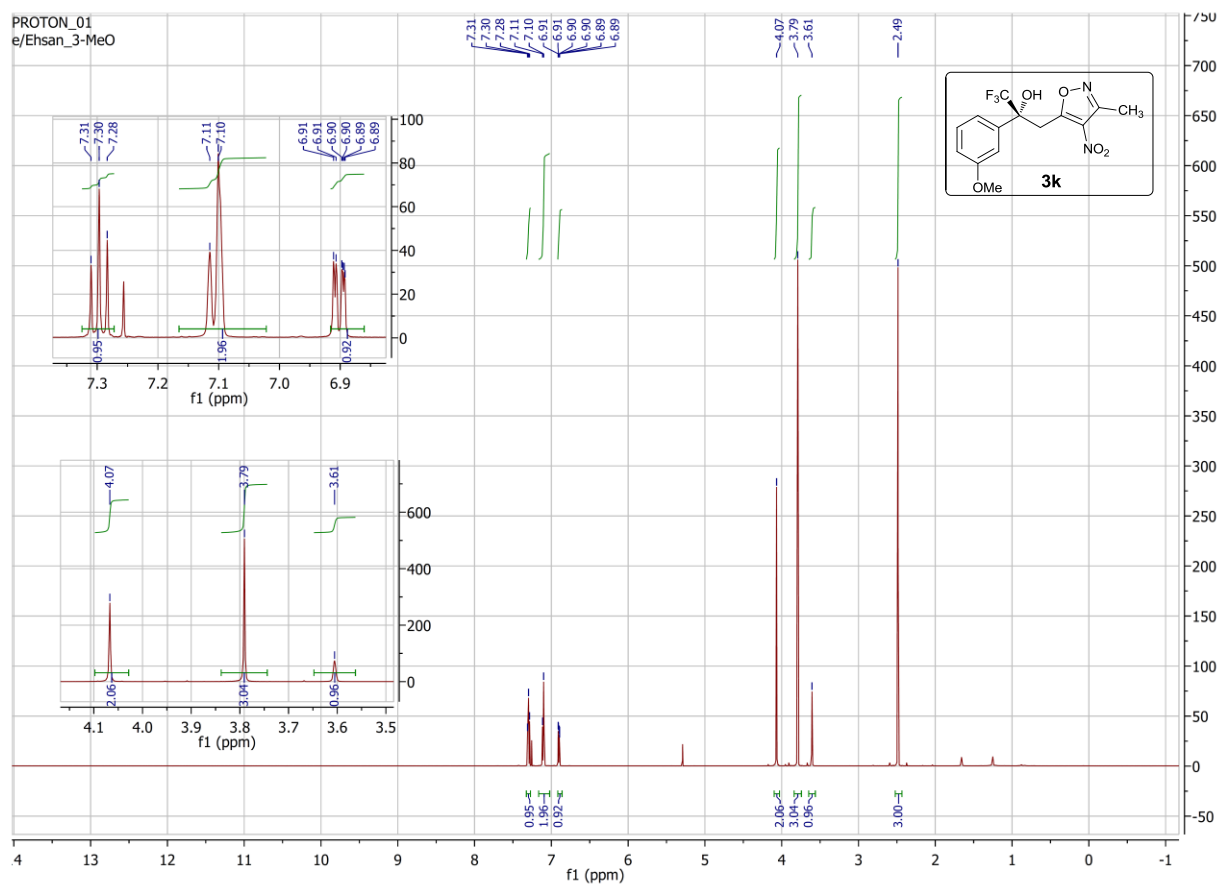
Injection date: 1/16/2017 5:03:14 PM
Acq. Analysis method: CHIRALPAK-IG.M

Column: Chiralpak IC, (150 x 4,6) mm, 5µ, SN: IC00CD-QF015

Pressure at start: 32 bar **Start flow:** 1.000 ml/min **Column oven:** 30 °C



Name	EH 3-OMe C				
RT [min]	Type	Area%	Area	Height	Width [min]
15.58	BV	26.78	5334.59	176.80	0.47
17.32	VB	73.22	14583.90	427.13	0.53
Sum		100.00	19918.49		



Sample Name: EH 2-Ome rac
 Data file: D:\ERNIE\EH\2OMER1AD.D
 Sample Info: Mobile phase: n-Heptane/iPrOH 9:1;
 The sample is solved in DCM/LM



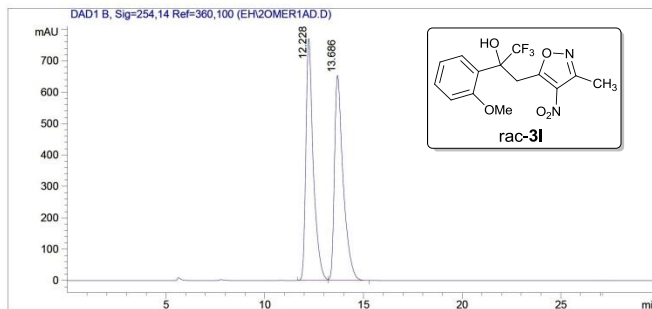
Column: DAICELAD.M
 Column info: (250 x 4)mm; 5µ non-chiral column

Operator: Analytical Lab AK Schoenebeck

Injektion Time: 09:42:40
 Injektion Date: 05.12.2016

Instrument Conditions: At Start At Stop

Temperature in°C: 30.0 30.0
 Pressure in bar: 25.4 25.3
 Flow in ml/min: 0.7 0.7



#	Ret. Time (min)	Width	Height (mAU)	Area (mAU*s)	Area %	
1	12.23	0.38	771.63	20084.41	49.99	
2	13.69	0.45	653.61	20095.85	50.01	
Total					40180.25	100.00

Sample Name: EH 2-MeO C
 Data file: D:\ERNIE\EH\2-MEOCAD.D
 Sample Info: Mobile phase: n-Heptane/iPrOH 9:1;
 The sample is solved in DCM/LM



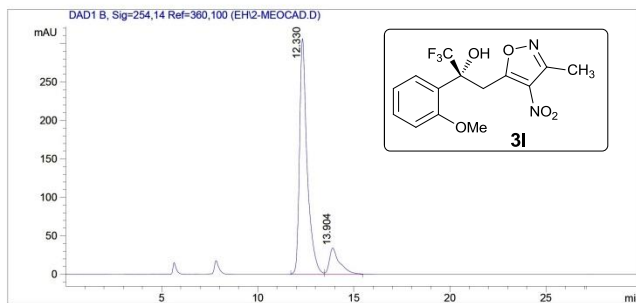
Column: DAICELAD.M
 Column info: (250 x 4)mm; 5µ non-chiral column

Operator: Analytical Lab AK Schoenebeck

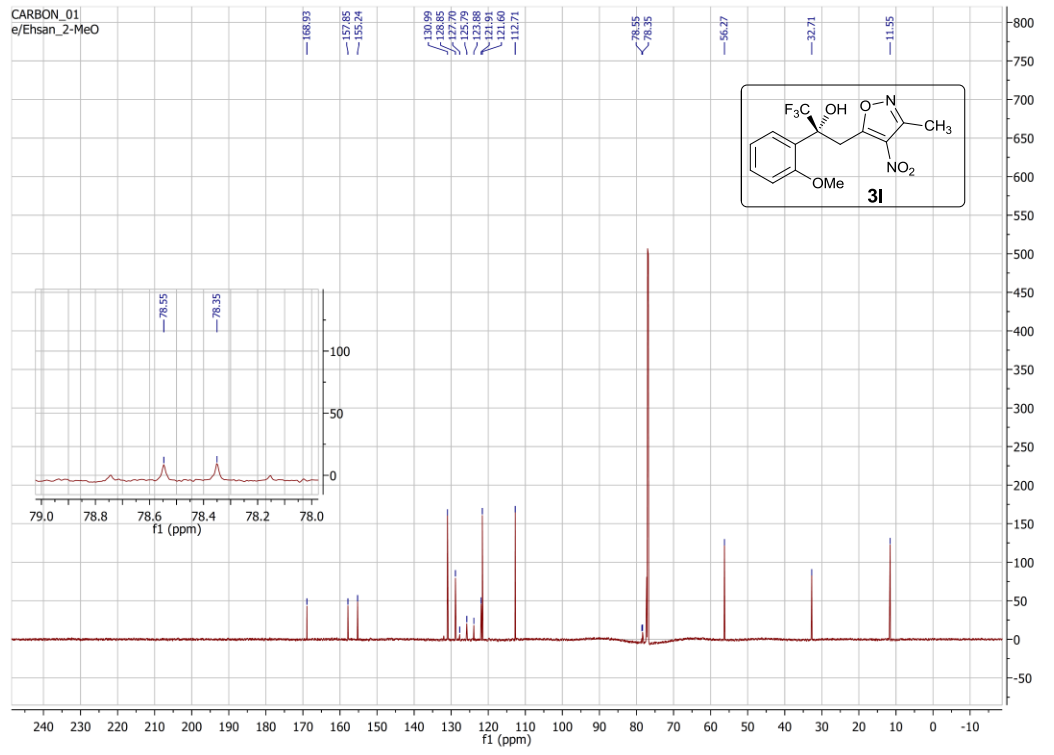
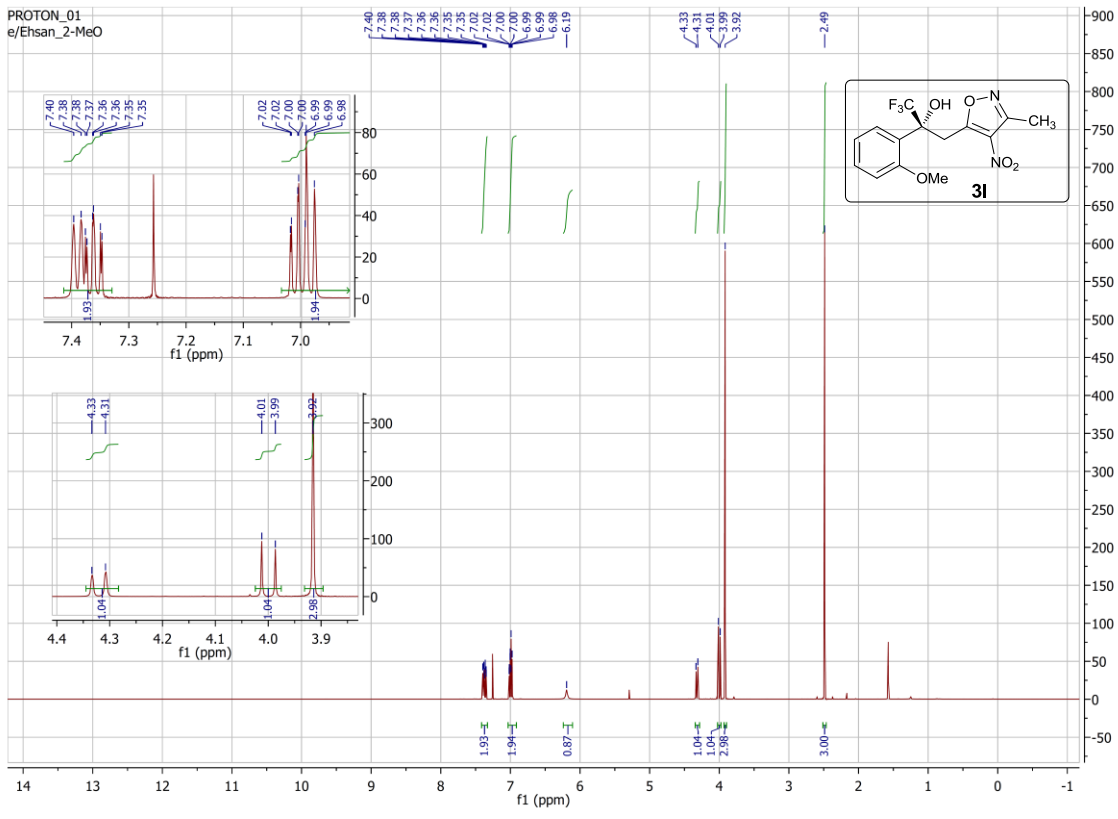
Injektion Time: 11:44:47
 Injektion Date: 20.12.2016

Instrument Conditions: At Start At Stop

Temperature in°C: 30.0 30.0
 Pressure in bar: 25.9 26.0
 Flow in ml/min: 0.7 0.7



#	Ret. Time (min)	Width	Height (mAU)	Area (mAU*s)	Area %	
1	12.33	0.41	306.37	8457.62	87.11	
2	13.90	0.52	34.07	1250.96	12.89	
Total					9708.59	100.00



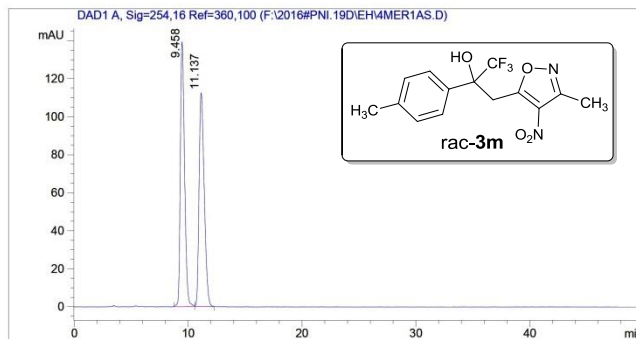
Sample Name: EH 4-Me rac
 Data file: F:\2016#PNI.19D\EH\4MER1AS.D
 Sample Info: Mobile phase: n-Heptane/EtOH 97:3;
 The sample is solved in DCM/MP



Säule: DAICELAS.M
 Säuleninfo: Chiralpak AS (250x4,6)mm
 Operator: Analytik Labor AKEN

Injektion Time: 17:07:28
 Injektion Date: 14.12.2016

Instrument Conditions: At Start At Stop
 Temperature in °C: 30.0 °C 30.0 °C
 Pressure in bar: 32.7 32.8
 Flow in ml/min: 1.00 1.00



#	Ret. Time (min)	Width	Height (mAU)	Area (mAU*s)	Area %
1	9.46	0.40	139.45	3599.83	50.27
2	11.14	0.53	112.62	3561.05	49.73
Total				7160.88	100.00

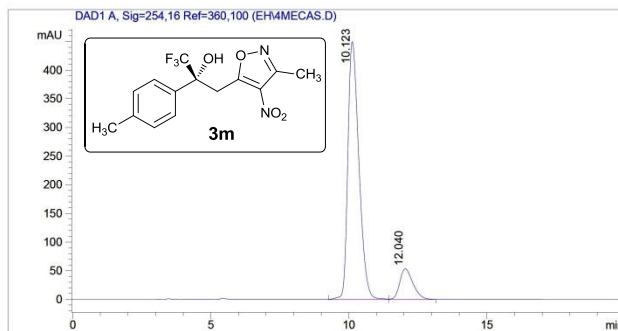
Sample Name: EH 4-Me C
 Data file: D:\GONZO\EH\4MECAS.D
 Sample Info: Mobile phase: n-Heptane/EtOH 97:3;
 The sample is solved in DCM/MP



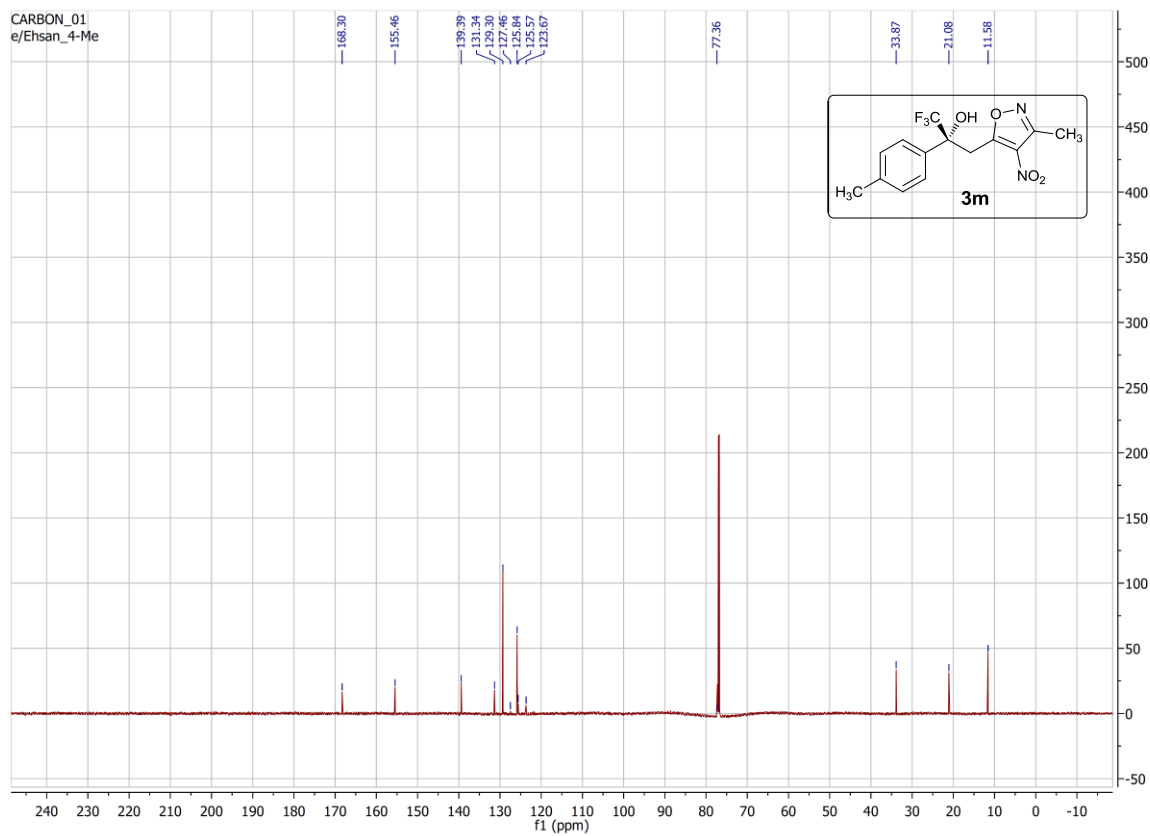
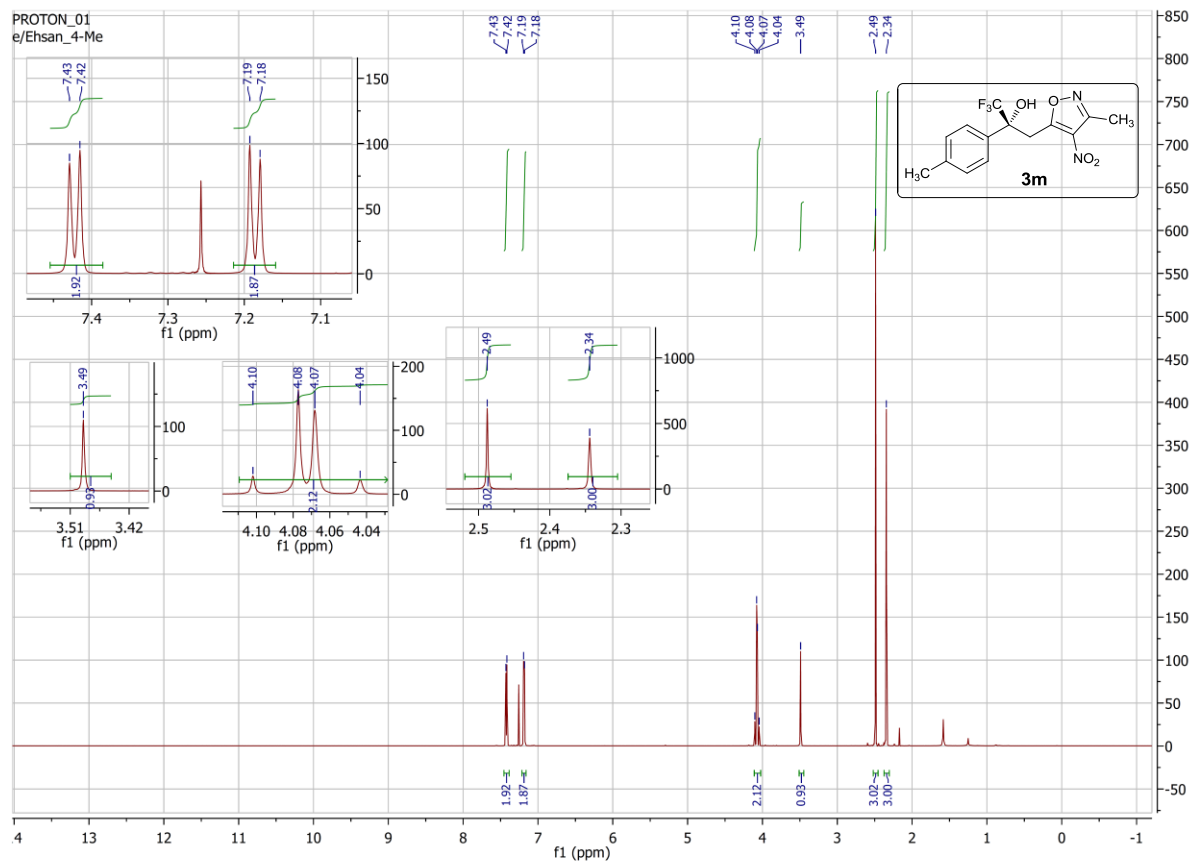
Säule: DAICELAS.M
 Säuleninfo: Chiralpak AS (250x4,6)mm
 Operator: Analytik Labor AKEN

Injektion Time: 08:28:49
 Injektion Date: 20.12.2016

Instrument Conditions: At Start At Stop
 Temperature in °C: 30.0 °C 30.0 °C
 Pressure in bar: 32.7 33.0
 Flow in ml/min: 1.00 1.00



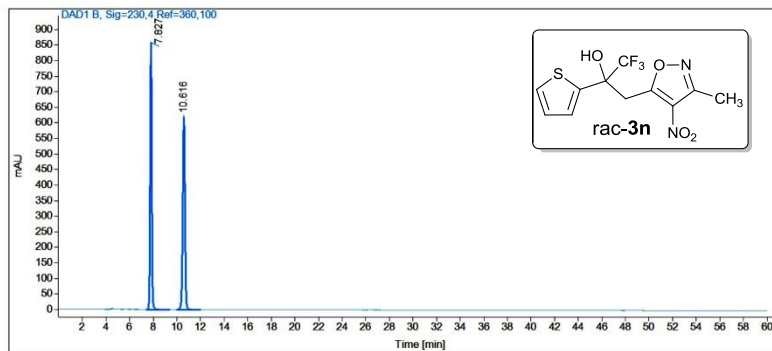
#	Ret. Time (min)	Width	Height (mAU)	Area (mAU*s)	Area %
1	10.12	0.43	449.66	12457.96	87.70
2	12.04	0.55	53.34	1746.80	12.30
Total				14204.76	100.00



Sample name: EH Thiophene
Data file: C:\SNOOPY\EH\TPRIA.D
Description: Mobile phase: n-Heptane/EtOH 7:3;
 The sample is solved in DCM/MP
Injection date: 12/6/2016 7:20:16 PM
Acq. Analysis method: CHIRALPAKIARNP.M

Column: Chiralpak IA, (250 x 4,6) mm, 5µ, SN: IA00CE-RC036

Pressure at start: 41 bar **Start flow:** 0.700 ml/min **Column oven:** 30 °C

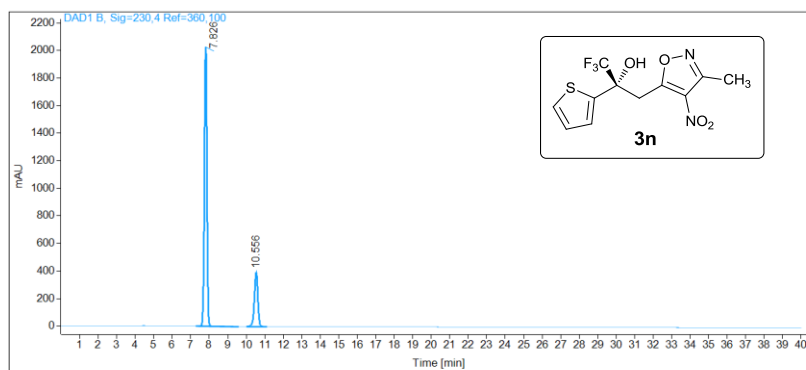


Name	EH Thiophene				
RT [min]	Type	Area%	Area	Height	Width [min]
7.83	BB	49.79	7980.11	859.12	0.14
10.62	BB	50.21	8047.15	619.17	0.20
Sum		100.00	16027.26		

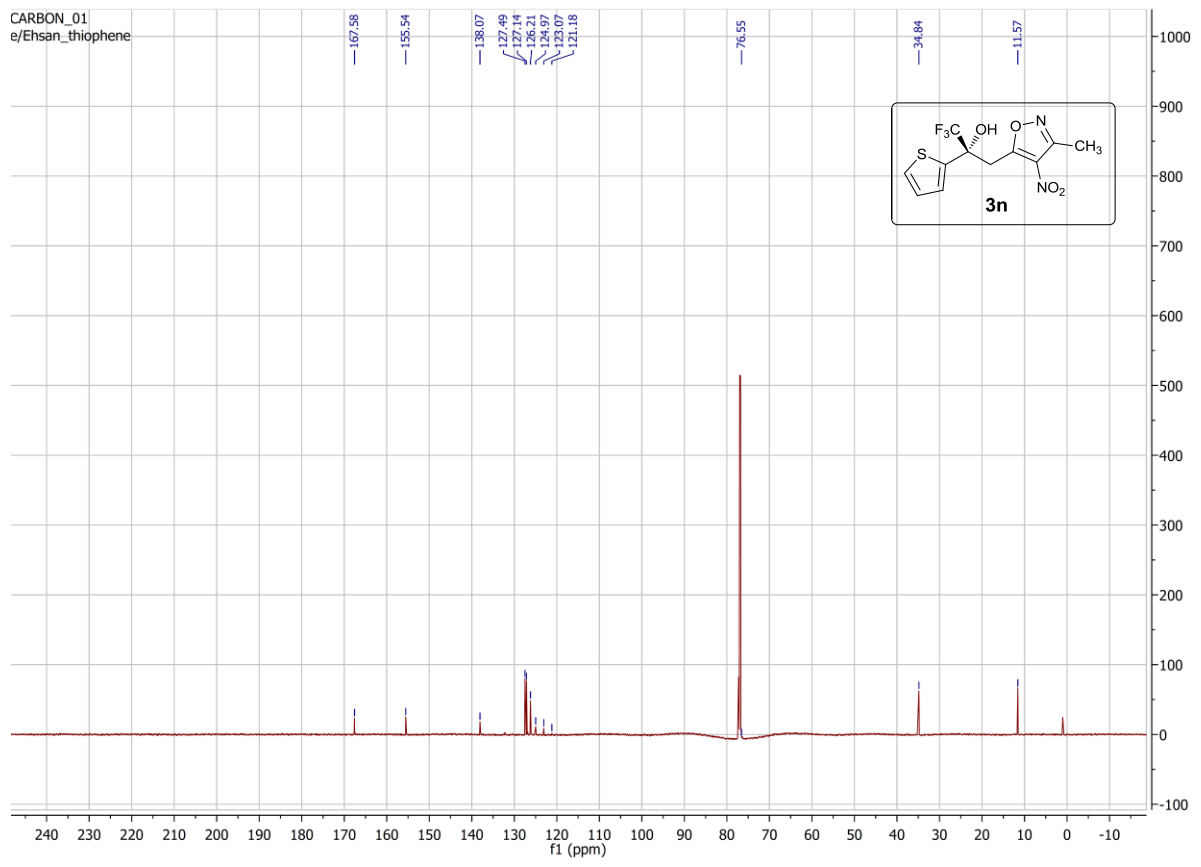
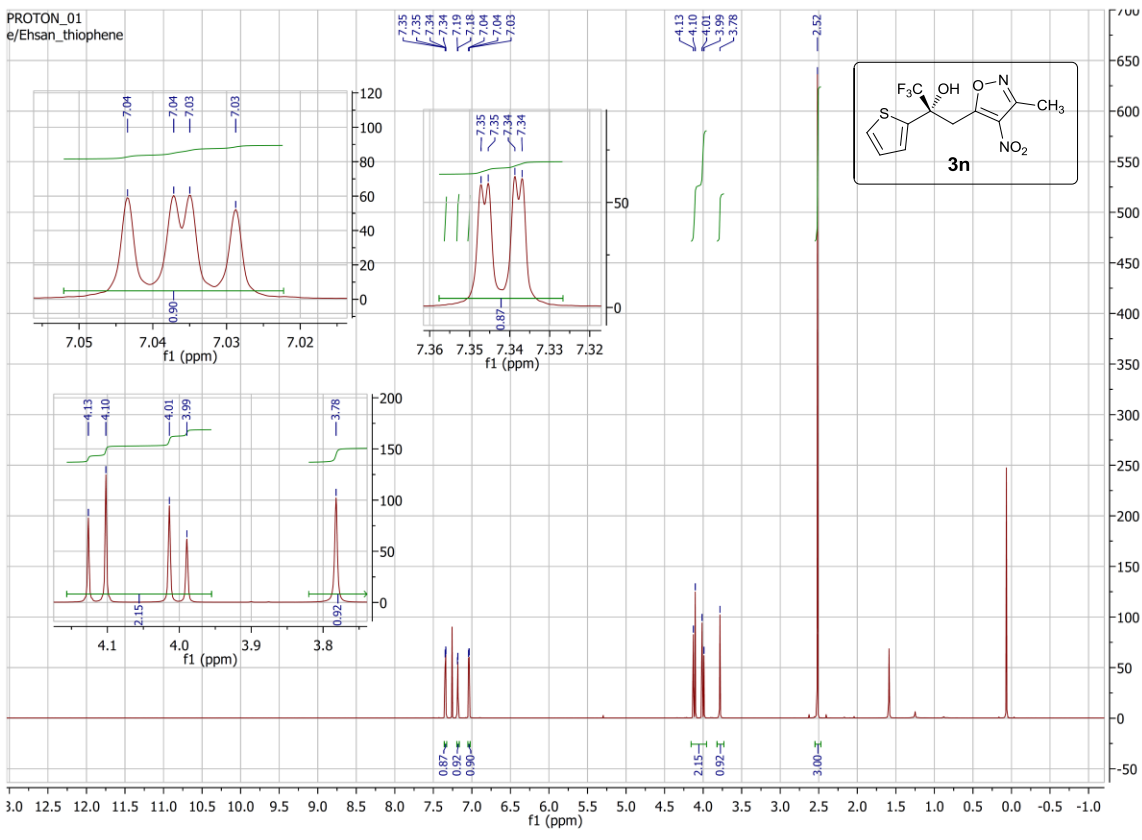
Sample name: EH Thiophene C
Data file: C:\SNOOPY\EH\THCIA.D
Description: Mobile phase: n-Heptane/EtOH 7:3;
 The sample is solved in DCM/MP
Injection date: 12/19/2016 9:38:04 AM
Acq. Analysis method: CHIRALPAKIARNP.M

Column: Chiralpak IA, (250 x 4,6) mm, 5µ, SN: IA00CE-RC036

Pressure at start: 41 bar **Start flow:** 0.700 ml/min **Column oven:** 30 °C



Name	EH Thiophene C				
RT [min]	Type	Area%	Area	Height	Width [min]
7.83	BB	79.43	19437.49	2027.57	0.15
10.56	BB	20.57	5033.78	393.89	0.20
Sum		100.00	24471.27		

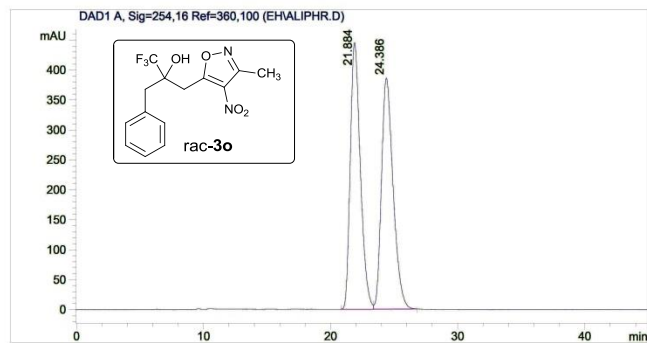


Sample Name: Aliphatic-rac
 Data file: D:\GONZO\EH\ALIPH.R.D
 Sample Info: Mobile phase: n-Heptane/EtOH 95:5; Flow 0.5, Chiralpack AS
 The sample is solved in DCM/MP
 Säule: DAICELAS.M
 Säuleninfo: Chiralpak AS (250x4,6)mm
 Operator: Analytik Labor AKEN



Injektion Time: 10:08:43
 Injektion Date: 05.05.2017

Instrument Conditions: At Start At Stop
 Temperature in °C: 30.0°C 30.0°C
 Pressure in bar: 20.3 21.7
 Flow in ml/min: 0.50 0.50



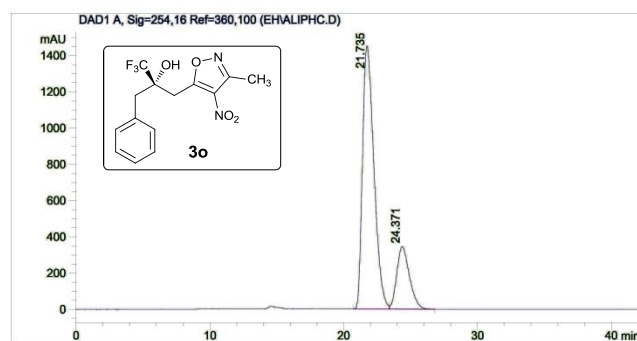
#	Ret. Time (min)	Width	Height (mAU)	Area (mAU*s)	Area %
1	21.88	0.84	444.86	24503.49	49.88
2	24.39	0.97	385.72	24617.44	50.12
Total				49120.93	100.00

Sample Name: Aliphatic-chi
 Data file: D:\GONZO\EH\ALIPH.C.D
 Sample Info: Mobile phase: n-Heptane/EtOH 95:5; Flow 0.5, Chiralpack AS
 The sample is solved in DCM/MP
 Säule: DAICELAS.M
 Säuleninfo: Chiralpak AS (250x4,6)mm
 Operator: Analytik Labor AKEN



Injektion Time: 10:54:57
 Injektion Date: 05.05.2017

Instrument Conditions: At Start At Stop
 Temperature in °C: 30.0°C 30.0°C
 Pressure in bar: 21.5 22.0
 Flow in ml/min: 0.50 0.50



#	Ret. Time (min)	Width	Height (mAU)	Area (mAU*s)	Area %
1	21.73	0.93	1451.84	86256.42	79.05
2	24.37	1.00	346.10	22854.89	20.95
Total				109111.31	100.00

