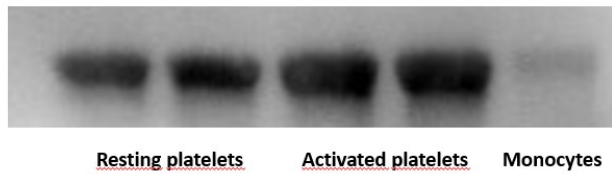
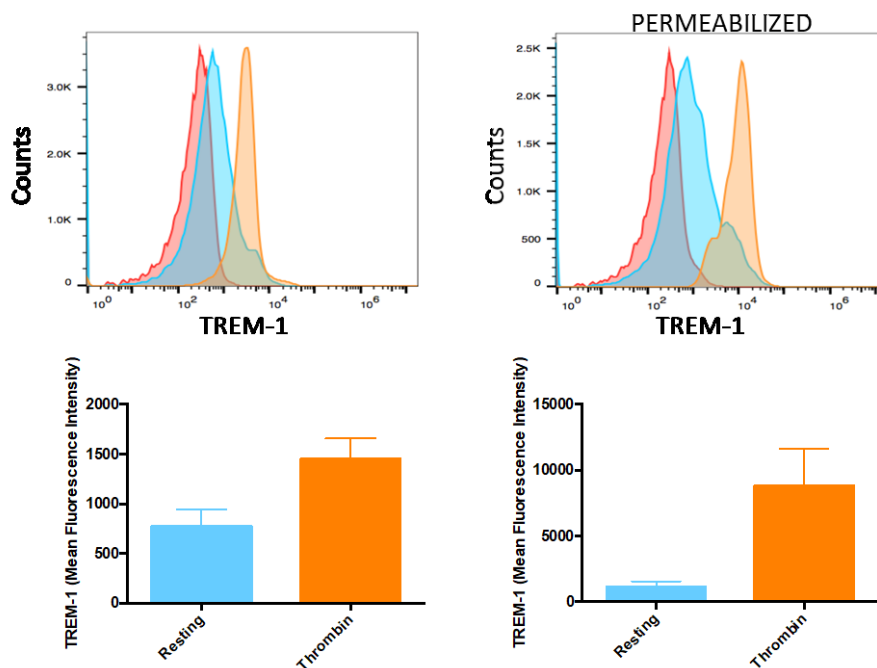


Supplementary Material to Jolly et al. "Triggering Receptor Expressed on Myeloid cells-1: a new player in platelet aggregation"
(<https://doi.org/10.1160/TH17-03-0156>)

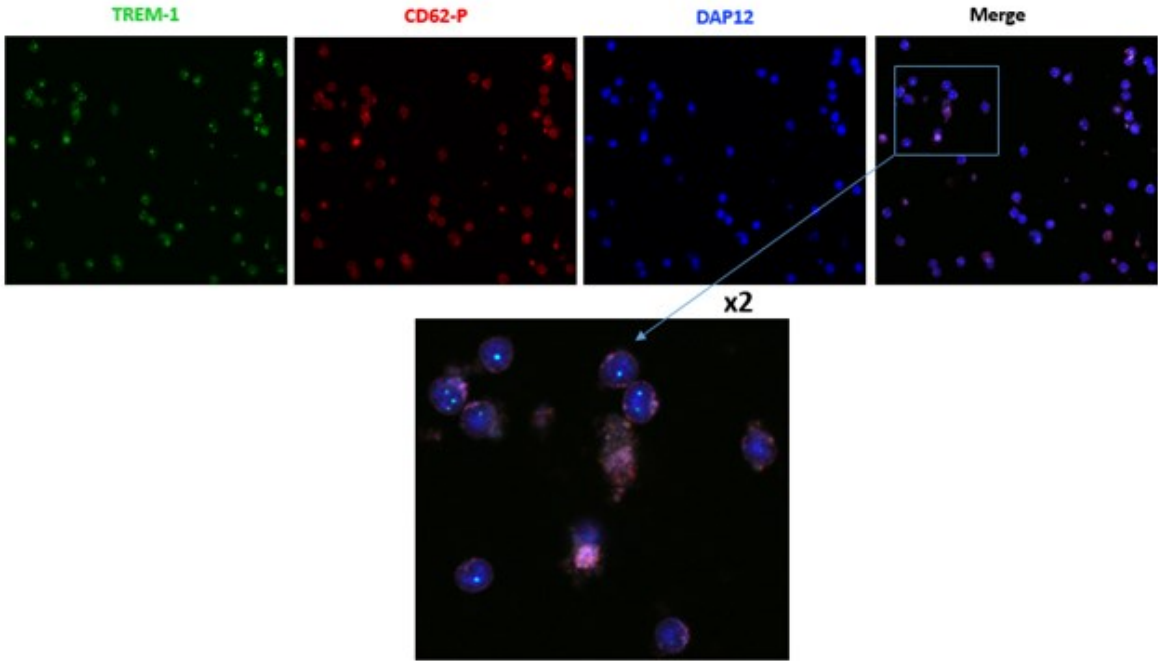


Suppl. Figure 1: Analysis of TREM-1 (anti-TREM-1 RnD Systems) expression in resting or thrombin (1U/mL, 5 minutes) activated-human platelets, and in unstimulated human monocytes by immunoblotting.



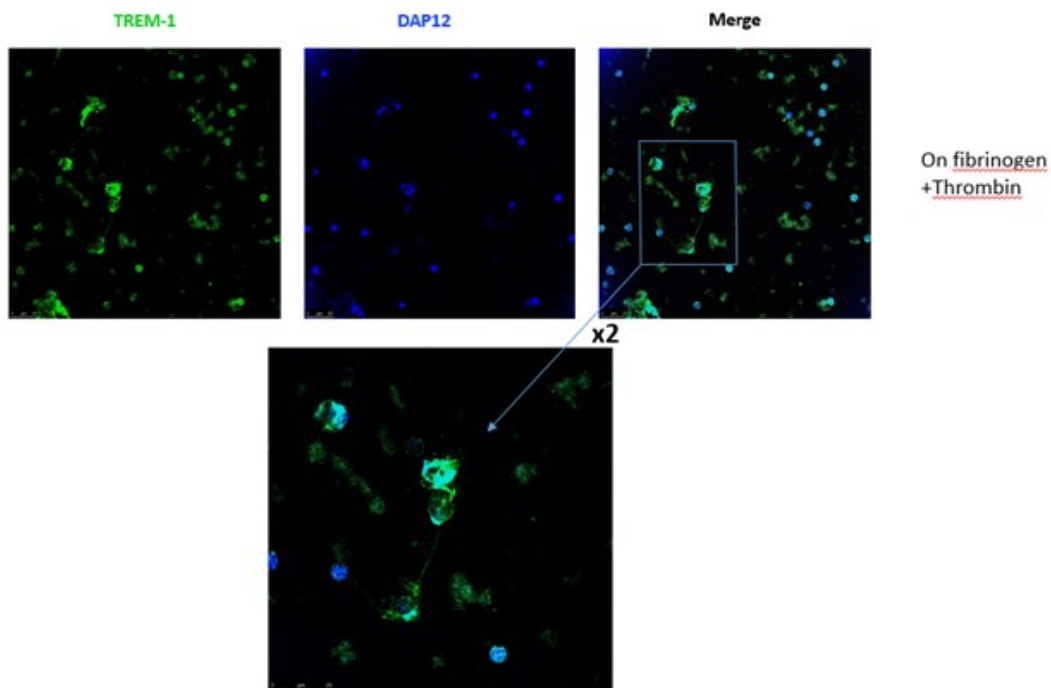
Suppl. Figure 2: Flow cytometry analysis of TREM-1 expression in non-permeabilized (left panel) and permeabilized human platelets. Isotype control antibody (red), anti-TREM-1-FITC in resting cells (blue), and anti-TREM-1-FITC in thrombin activated cells (orange).

Supplementary Material to Jolly et al. "Triggering Receptor Expressed on Myeloid cells-1: a new player in platelet aggregation"
(<https://doi.org/10.1160/TH17-03-0156>)

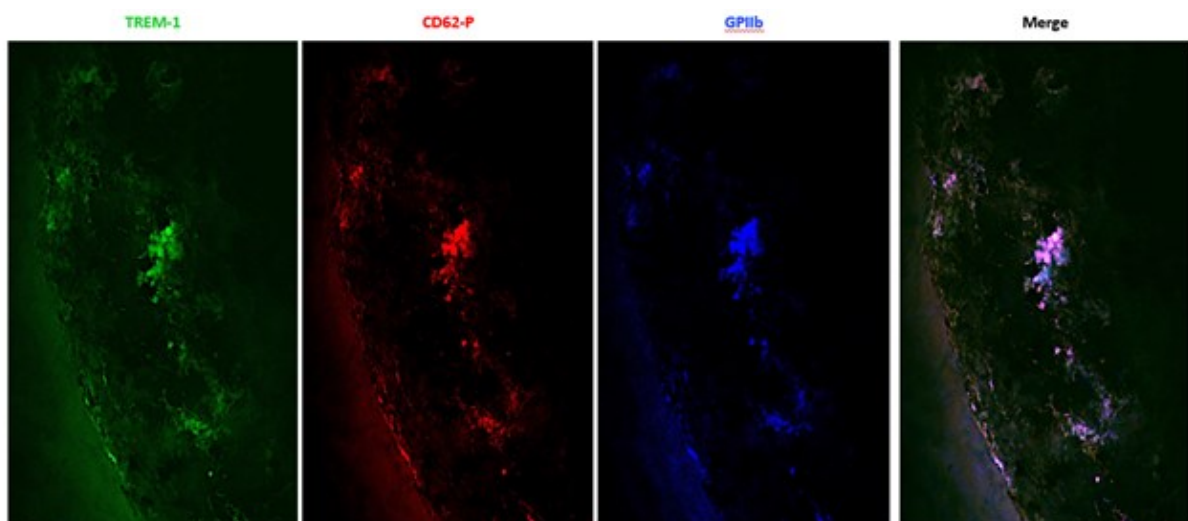


Suppl. Figure 3: Confocal fluorescent images of resting platelets stained with anti-human TREM-1 (green), CD62-P (red) and DAP12 (blue) mAb.

Supplementary Material to Jolly et al. “Triggering Receptor Expressed on Myeloid cells-1: a new player in platelet aggregation”
(<https://doi.org/10.1160/TH17-03-0156>)

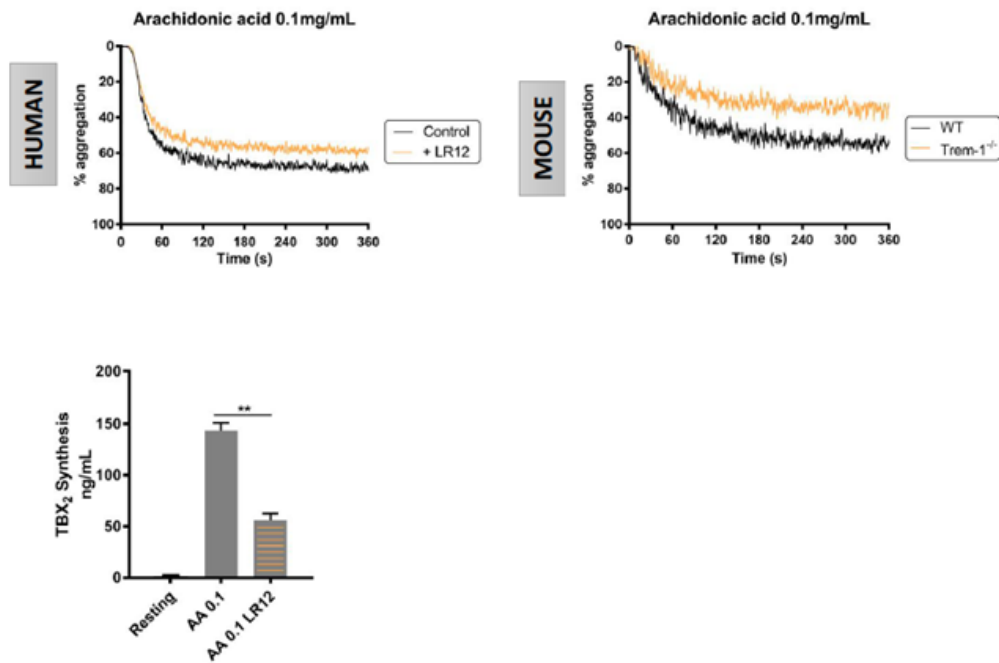


Suppl. Figure 4: Confocal fluorescent images of fibrinogen-adherent platelets stimulated with thrombin (1U/mL, 5 minutes). Platelets were stained with anti-humanTREM-1 (green) and DAP12 (blue) mAb, Scale bar=25µm.



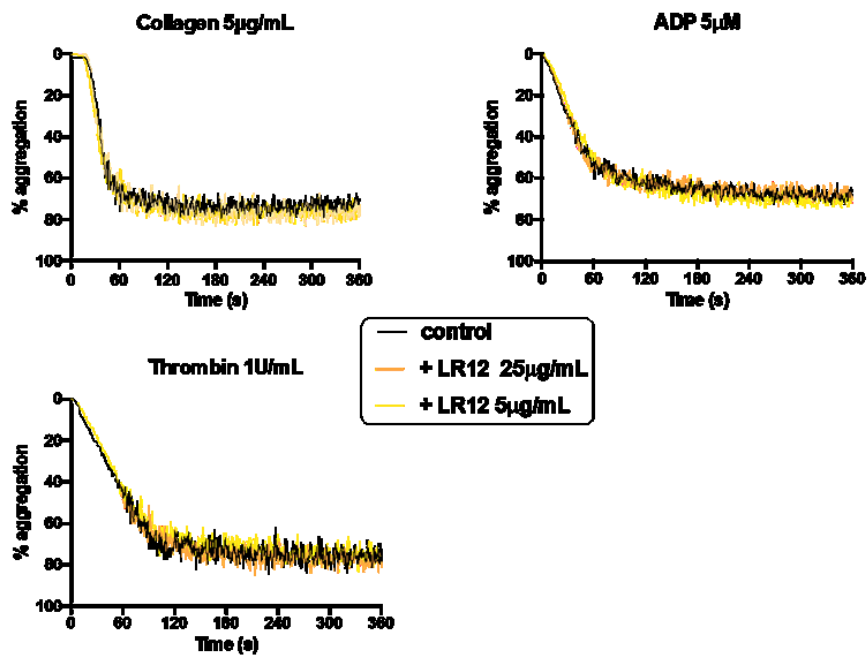
Suppl. Figure 5: Human coronary artery thrombus was obtained using a thrombectomy catheter at the time of percutaneous coronary intervention for ST-segment elevation myocardial infarction. Thrombus fragments were placed in formalin, embedded in paraffin, sectioned (5µm), and stained for TREM-1 (green), CD62-P (red) and GPIIb (blue)

Supplementary Material to Jolly et al. "Triggering Receptor Expressed on Myeloid cells-1: a new player in platelet aggregation"
(<https://doi.org/10.1160/TH17-03-0156>)



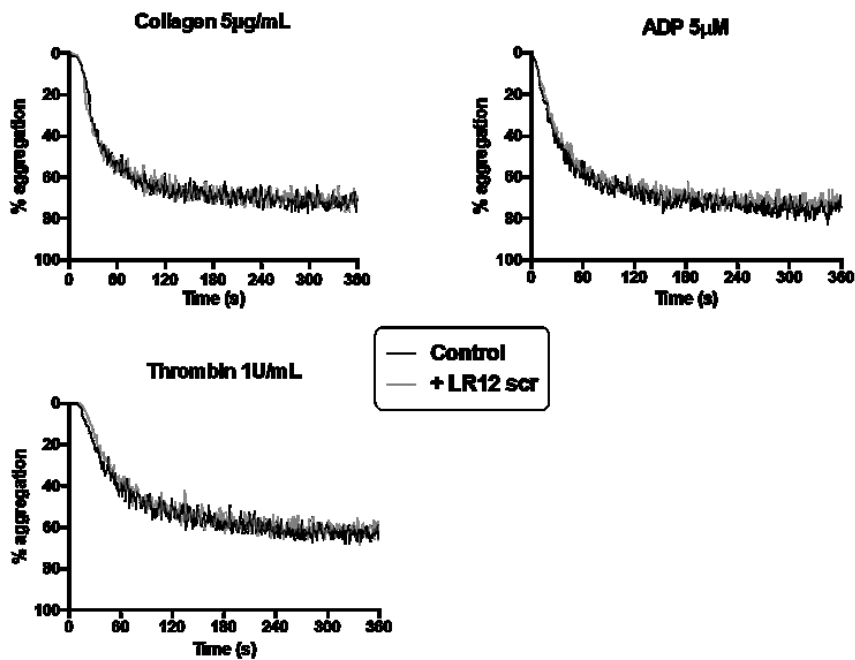
Suppl. Figure 6: Aggregation of washed human and mouse platelets induced with arachidonic acid with or without 50 μ g/mL LR12 (upper panel). Thromboxane production by human platelets upon stimulation with arachidonic acid (aa) in the presence or not of 50 μ g/mL LR12 (lower panel). Experiments were performed twice on 4 healthy blood donors or mice per groups. ** $p < 0.01$.

Supplementary Material to Jolly et al. "Triggering Receptor Expressed on Myeloid cells-1: a new player in platelet aggregation"
(<https://doi.org/10.1160/TH17-03-0156>)



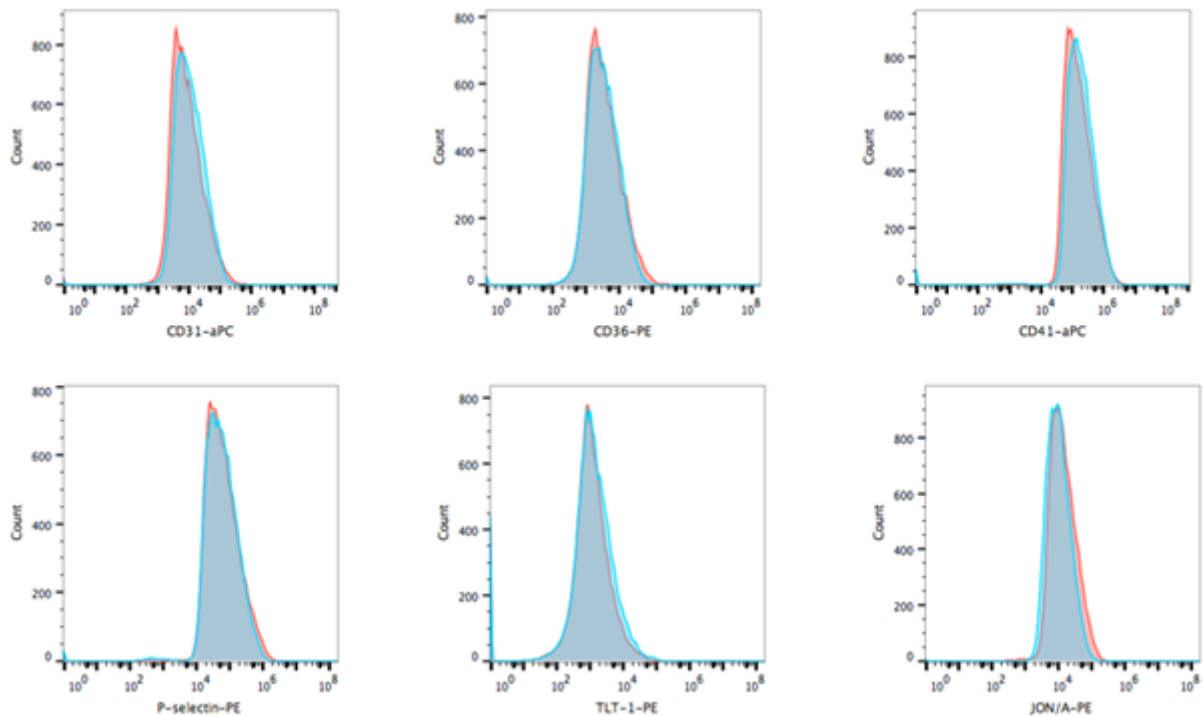
Suppl. Figure 7: Aggregation of washed human platelets induced by indicated concentrations of collagen, thrombin or ADP incubated with 5 or 25µg/mL of LR12. Experiments were performed on 6-8 healthy blood donors.

Supplementary Material to Jolly et al. "Triggering Receptor Expressed on Myeloid cells-1: a new player in platelet aggregation"
(<https://doi.org/10.1160/TH17-03-0156>)

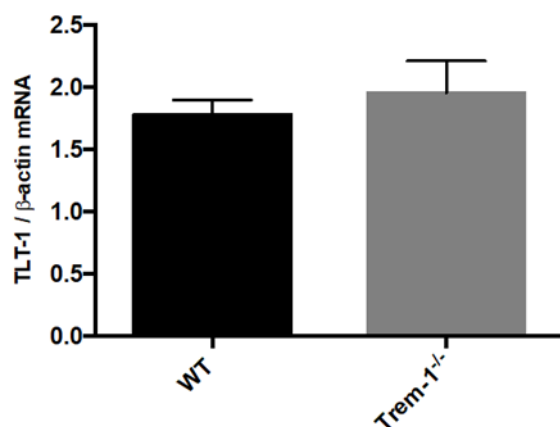


Suppl. Figure 8: Aggregation of washed human platelets induced by indicated concentrations of collagen, thrombin or ADP incubated with 25µg/mL of LR12 scramble (LR12 scr). Experiments were performed on 6-8 healthy blood donors.

Supplementary Material to Jolly et al. "Triggering Receptor Expressed on Myeloid cells-1: a new player in platelet aggregation"
(<https://doi.org/10.1160/TH17-03-0156>)

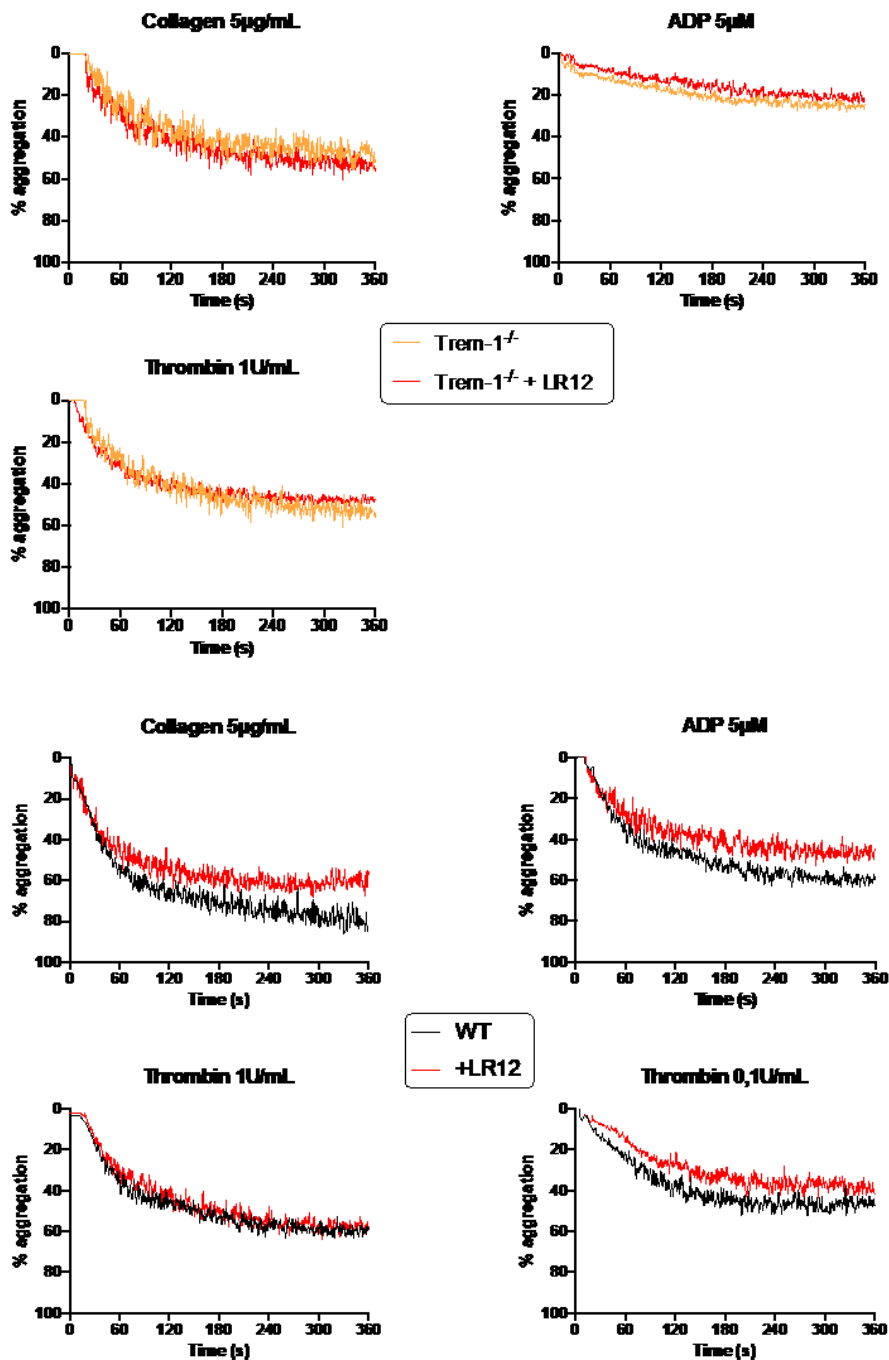


Suppl. Figure 9: FACS analysis of isolated platelets from WT (Red) and Trem-1 KO (Blue) mice stained for various membrane markers.



Suppl. Figure 10: Quantification of Trem1-1 gene expression in mouse platelets by qRT-PCR; n=4-5 per condition.

Supplementary Material to Jolly et al. "Triggering Receptor Expressed on Myeloid cells-1: a new player in platelet aggregation"
(<https://doi.org/10.1160/TH17-03-0156>)



Suppl. Figure 11: Aggregation of washed platelets from TREM-1 KO (upper panels) or WT (lower panels) induced by indicated concentrations of collagen, thrombin or ADP incubated with 50µg/mL of LR12. Experiments were performed on 3-5 animals per condition.