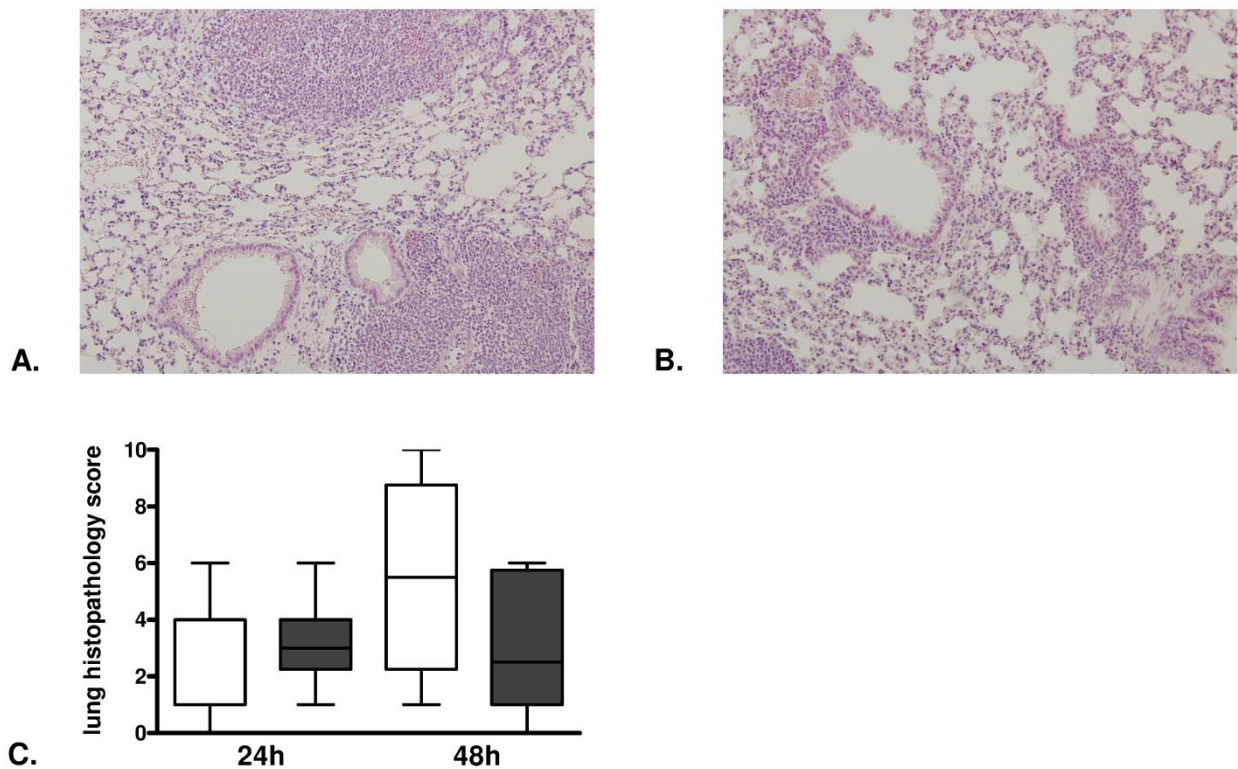


**Supplementary Material to Schouten et al. “The endothelial protein C receptor impairs the antibacterial response in murine pneumococcal pneumonia and sepsis” (Thromb Haemost 2014; 111.5)**

**Supplementary Figure 1.**



**Suppl. Figure 1: Endothelial protein C receptor knockout mice have an unaltered total histopathology score at 24 and 48 h after induction of pneumococcal pneumonia as compared to wild-type mice.** A, B) Representative slides of lung H&E stainings 48 h after induction of pneumococcal pneumonia wild-type (A) and endothelial protein C receptor knockout mice (B) (original magnification x 100). C) Total lung histopathology scores at 24 and 48 h after induction of pneumococcal pneumonia in wild-type (white) and endothelial protein C receptor knock out (grey) mice. Data are expressed as box-and-whisker diagrams depicting the smallest observation, lower quartile, median, upper quartile and largest observation (8 mice per group).