

Appendix A Owner questionnaire following central tarsal bone fracture

1. Have there been had any set-backs/complications since the surgery?
2. How would you rate your dog's lameness? Absent/mild/moderate/severe
3. How would you rate your dog's pain? Absent/mild/moderate/severe
4. How would you rate your dog's stiffness after exercise? Absent/mild/moderate/severe
5. How would you rate your dog's stiffness after rest? Absent/mild/moderate/severe
6. How often do you have to restrict your dog's exercise? Never/weekly/monthly/less than monthly
7. How often do you have to give your dog analgesic medication? Never/weekly/monthly/less than monthly
8. How do you rate your dog's quality of life? Excellent/good/fair/poor
9. How satisfied are you with the surgery performed? Very satisfied/satisfied/unsatisfied/very unsatisfied
10. Any other comments?

Appendix Table 1 Signalment of dogs with type V central tarsal bone fractures diagnosed using CT and stabilized using a medial bone plate

Case	Breed	Age at fracture	Weight (kg)	Gender	Limb	Concurrent fractures
1	Greyhound (ExR)	4y, 9mo	31.3	MN	Left	TB4
2	Greyhound Cross	4y	21.1	FN	Left	TB4
3	Greyhound Cross	5y	26.9	MN	Right	TB4
4	Greyhound (ExR)	3y, 3mo	28.3	MN	Right	Calc, TB2, TB3, TB4, MT5
5	Whippet	7y, 6mo	14.2	ME	Right	TB4
6	Hungarian Vizsla	10y, 7mo	24.8	ME	Left	TB4

Abbreviations: Calc, calcaneus; CT, computed tomography; ExR, ex-racing animal; FN, female neutered; ME, male entire; MN, male neutered; MT5, fifth metatarsal bone; TB2, second tarsal bone; TB3, third tarsal bone; TB4, fourth tarsal bone.

Appendix Table 2 Implants used to manage type V CTB fractures in six dogs

Case	Medial bone plate			Screws	Additional implants
	Type	Size (mm)	Holes		
1	Locking compression plate	2.7	7	6 non-locking	None
2	Locking compression plate	2.7	6	5 non-locking, 1 locking ^a	2.7 mm dorsoplantar CTB screw
3	Locking compression plate	2.7	6	4 non-locking	2.4 mm dorsoplantar CTB screw
4	Locking compression plate	2.7	8	5 non-locking	2.7 mm dorsoplantar CTB screw
5	Veterinary cuttable plate	2.0/2.7	10	8 non-locking ^a	None
6	Locking compression plate	2.4	7	4 non-locking, 1 locking ^a	None

Abbreviation: CTB, central tarsal bone.

^aDenotes dogs where a screw was placed through the plate and engaged the central tarsal bone.

Appendix Table 3 Clinical and questionnaire follow-up

Case	Clinical follow-up			Owner questionnaire	
	Time postoperatively	Complications	Lameness	Time postoperatively	Deficits
1	8 wk/18 mo ^a	Suspected SSI 9 d postoperatively	Intermittent lameness at trot/none	N/A ^b	N/A
2	8 wk	None	None	95 mo	Mild stiffness after rest
3	10 wk	None	Very mild	88 mo ^b	Mild lameness in cold weather
4	8 wk	None	Very mild	88 mo	Fair quality of life ^c
5	None	N/A	N/A	73 mo	None
6	8 wk	None	None	16 mo ^b	Mild stiffness after rest

Abbreviation: SSI, surgical site infection.

^aNo radiographs were obtained at this time.

^bDogs that were deceased at time of questionnaire.

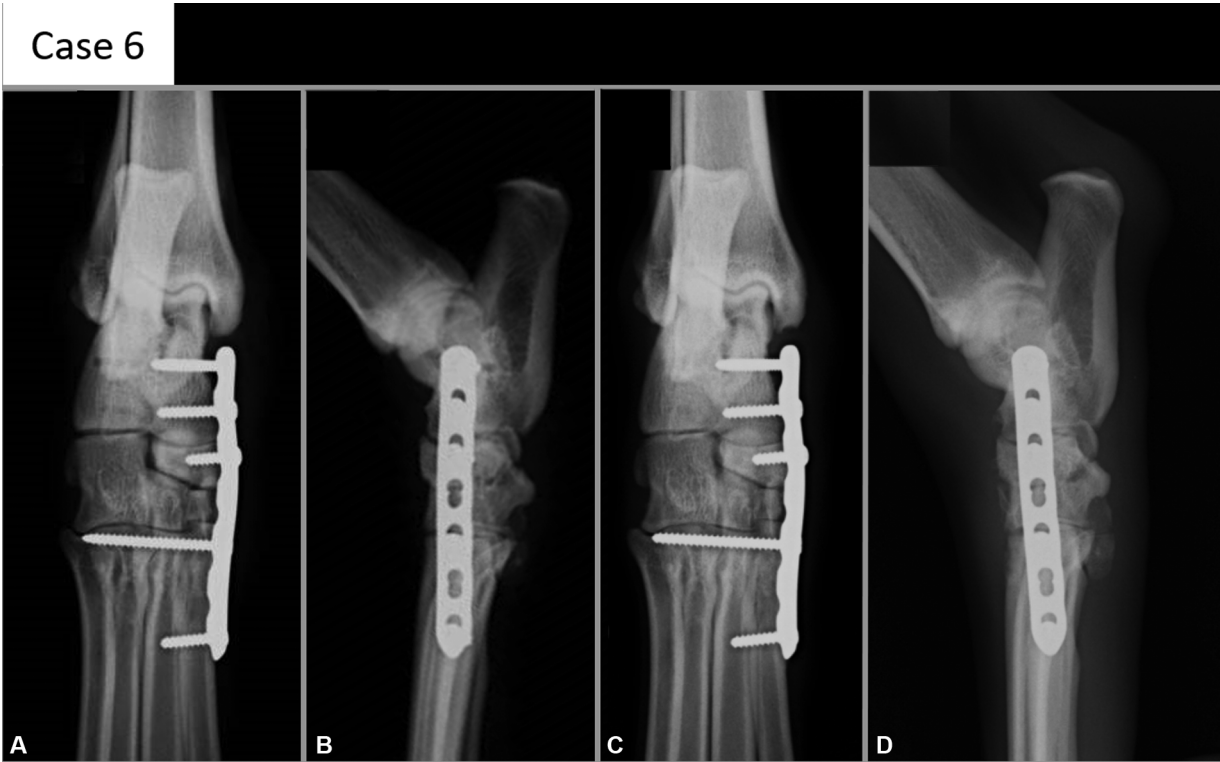
^cQuality of life was assigned as 'fair' due to comorbidities unrelated to the fracture.



Supplementary Fig. S1 Case 4.



Supplementary Fig. S2 Case 5.



Supplementary Fig. S3 Case 6.



Supplementary Fig. S4 Case 1.



Supplementary Fig. S5 Case 2.